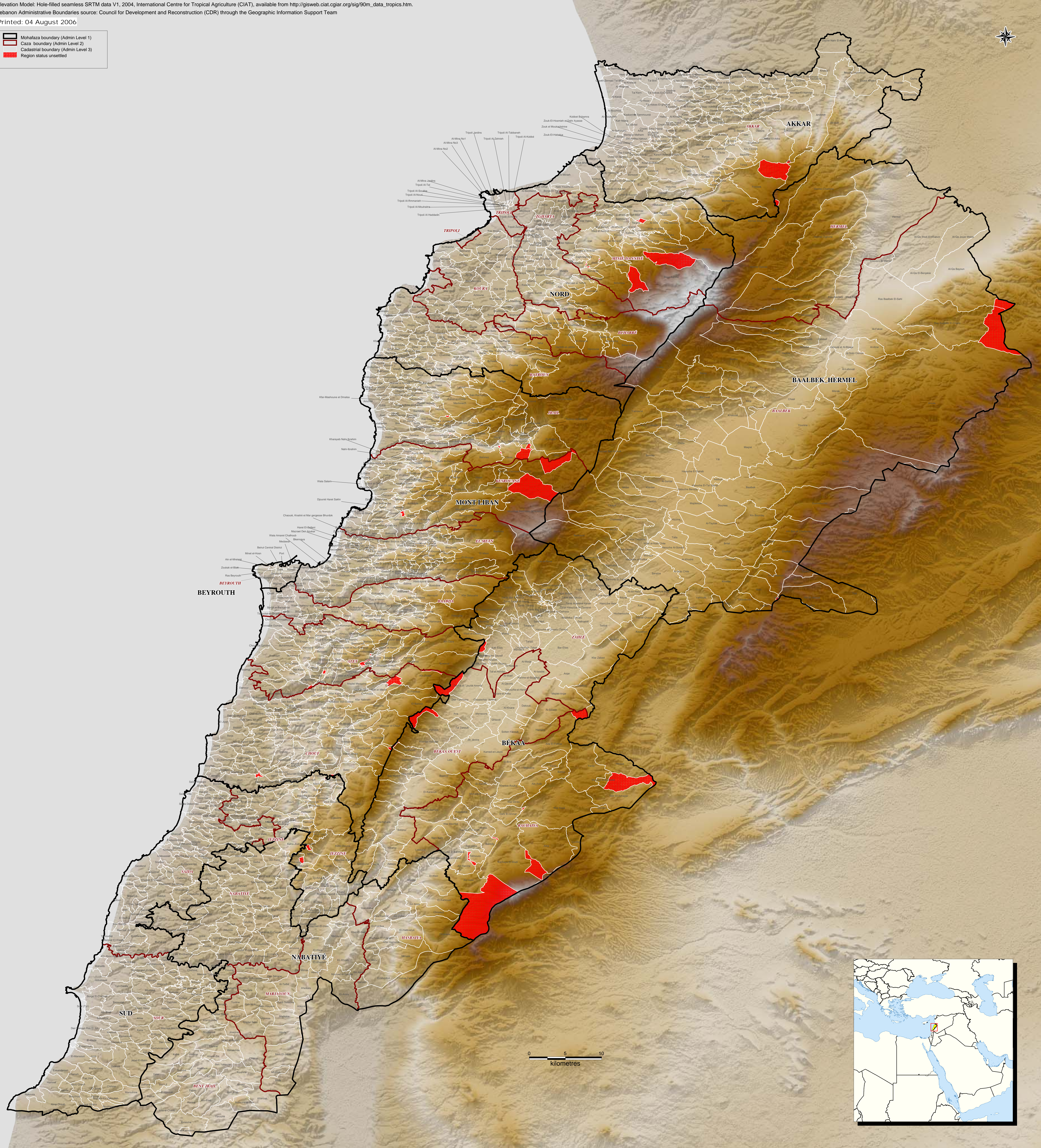


Elevation Model: Hole-filled seamless SRTM data V1, 2004, International Centre for Tropical Agriculture (CIAT), available from [http://gisweb.ciat.cgiar.org/sig/90m\\_data\\_tropics.htm](http://gisweb.ciat.cgiar.org/sig/90m_data_tropics.htm).  
Lebanon Administrative Boundaries source: Council for Development and Reconstruction (CDR) through the Geographic Information Support Team

Printed: 04 August 2006

- Mohafaza boundary (Admin Level 1)
- Caza boundary (Admin Level 2)
- Cadastral boundary (Admin Level 3)
- Region status unsettled



The boundaries and names shown and the designations used on this map do not imply official endorsement or acceptance by the United Nations.

Lebanon\_Admin\_AJPC-WOR