

ZAMBIA

As of April 2008

DRAFT



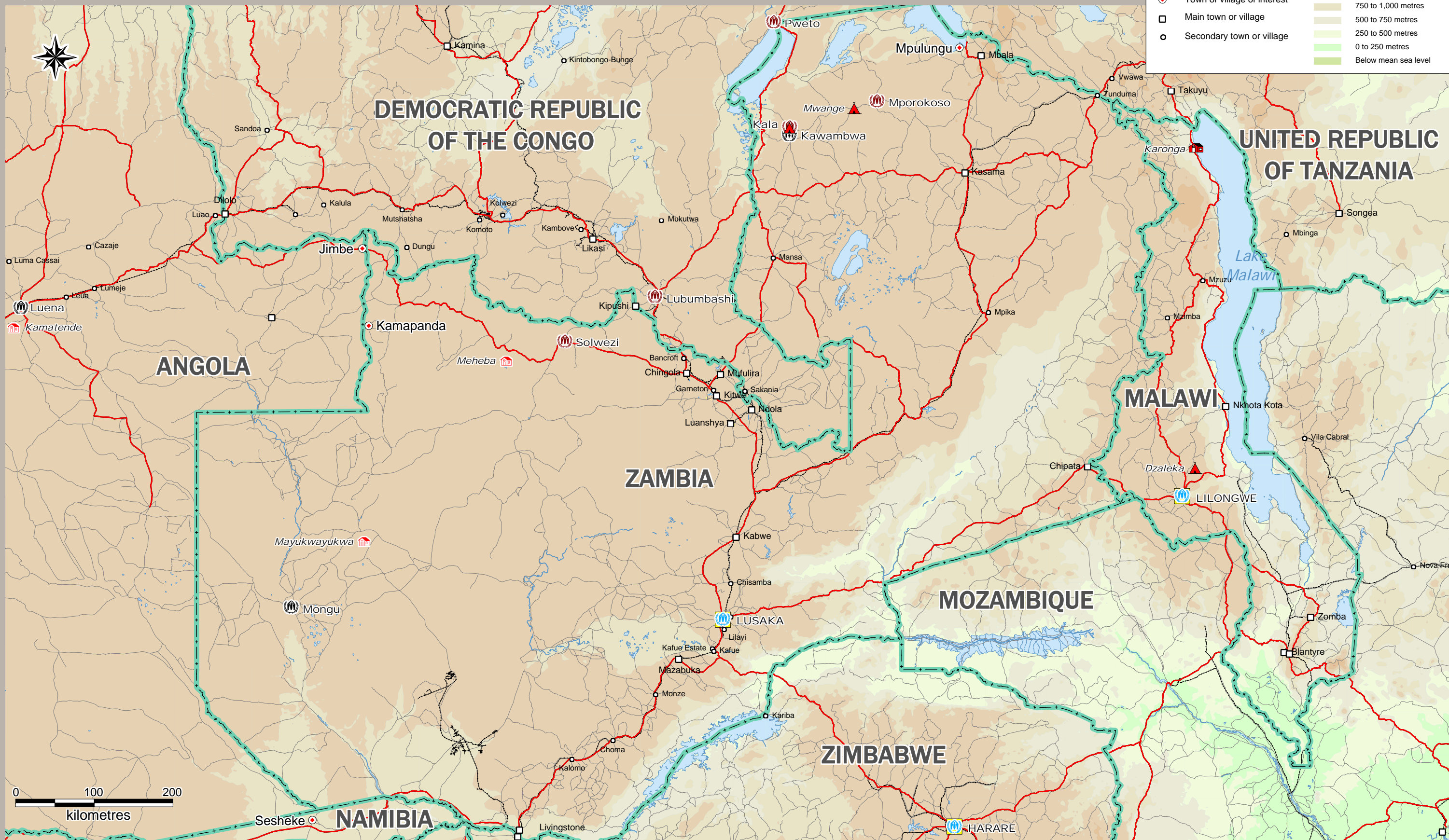
FIGSS
Field Information and
Coordination Support Section
Division of Operational Services

Sources:
UNHCR, Global Insight digital mapping
© 1998 Europa Technologies Ltd.

The boundaries and names shown
and the designations used on this
map do not imply official endorsement
or acceptance by the United Nations.



- | | | | |
|--|-----------------------------|-------------------------------------|------------------------|
| | Capital | | International boundary |
| | UNHCR Representation | | Main road |
| | UNHCR Sub office | | Secondary road |
| | UNHCR Field office | | Railway |
| | Refugee settlement | Elevation
(Above mean sea level) | |
| | Refugee transit centre | | 3,250 to 4,000 metres |
| | Refugee camp | | 2,500 to 3,250 metres |
| | Town or village of interest | | 1,750 to 2,500 metres |
| | Main town or village | | 1,000 to 1,750 metres |
| | Secondary town or village | | 750 to 1,000 metres |
| | | | 500 to 750 metres |
| | | | 250 to 500 metres |
| | | | 0 to 250 metres |
| | | | Below mean sea level |



0 100 200
kilometres