

# UNHCR PRESENCE IN THE DEMOCRATIC REPUBLIC OF CONGO

18/11/2010

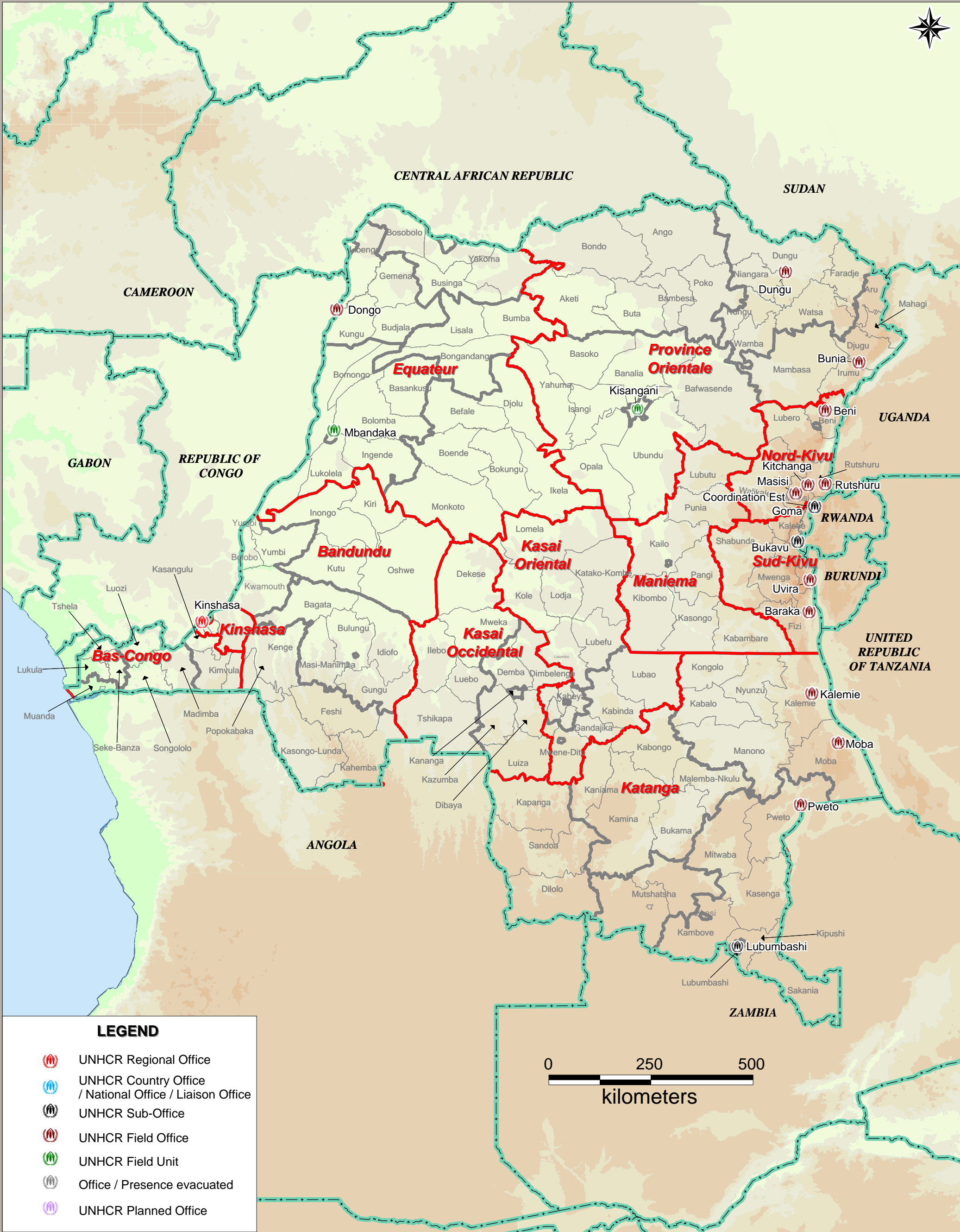
GIS AND MAPPING  
UNIT KINSHASA  
[Email:ortega@unhcr.org](mailto:Email:ortega@unhcr.org)

Sources:  
UNHCR, Global Insight digital mapping  
© 1998 Europa Technologies Ltd.

The boundaries and names shown  
and the designations used on this  
map do not imply official endorsement  
or acceptance by the United Nations.



RDC Admin. Territory Name\_A33.C.WOR



## LEGEND

- UNHCR Regional Office
- UNHCR Country Office / National Office / Liaison Office
- UNHCR Sub-Office
- UNHCR Field Office
- UNHCR Field Unit
- Office / Presence evacuated
- UNHCR Planned Office