

SITUATION OVERVIEW

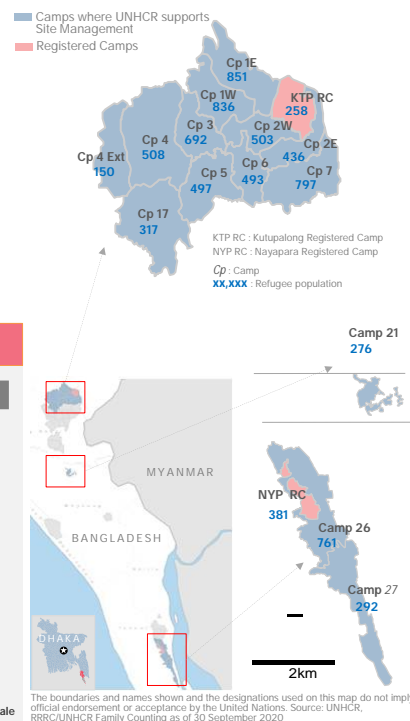
More than 861,500* Rohingya refugee women, men, girls and boys are hosted in Cox's Bazar District in Bangladesh, including 35,060 registered refugees who arrived in the 1990s (4%), and other unregistered Rohingya refugees who had settled in host communities prior to August 2017. Children make up 52% of the total refugee population and women and girls make up 51%.

The humanitarian situation in Cox's Bazar has been affected by the spread of the COVID-19 pandemic. In Cox's Bazar, only critical activities continue within the refugee camps although discussions with RRRC are ongoing on progressive and cautious increase of activities implemented. UNHCR continues to provide critical services focusing on Protection, Health, WASH, nutrition, fuel support (LPG) and other non-food items, and other activities as part of its communication with the community.

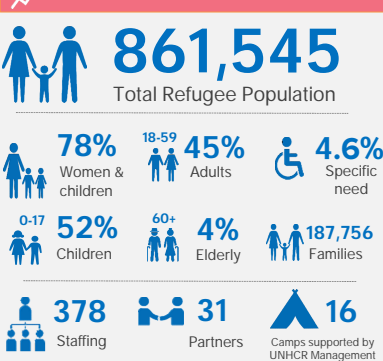
This dashboard monitors the progress being made to deliver protection and assistance activities with reference to selected indicators from UNHCR Bangladesh's 2020 country operations plan. It provides an overview for each strategic area of activity with cumulative key figures and monthly highlights.

*Refugee registration is ongoing exercise which includes registration of new born, registration of newly arrival and deceased individuals

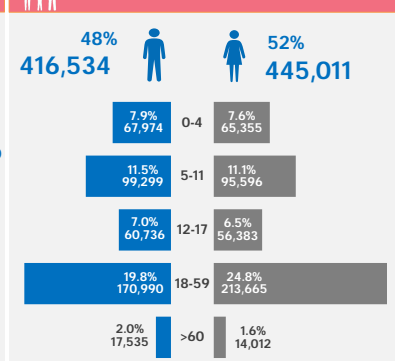
GEOGRAPHIC SITUATION



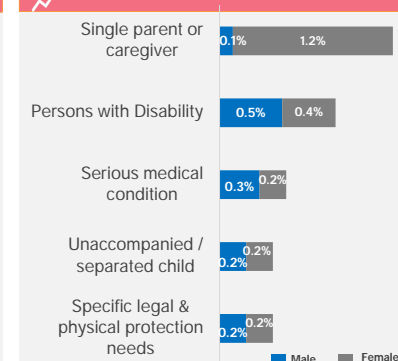
KEY POPULATION FIGURES



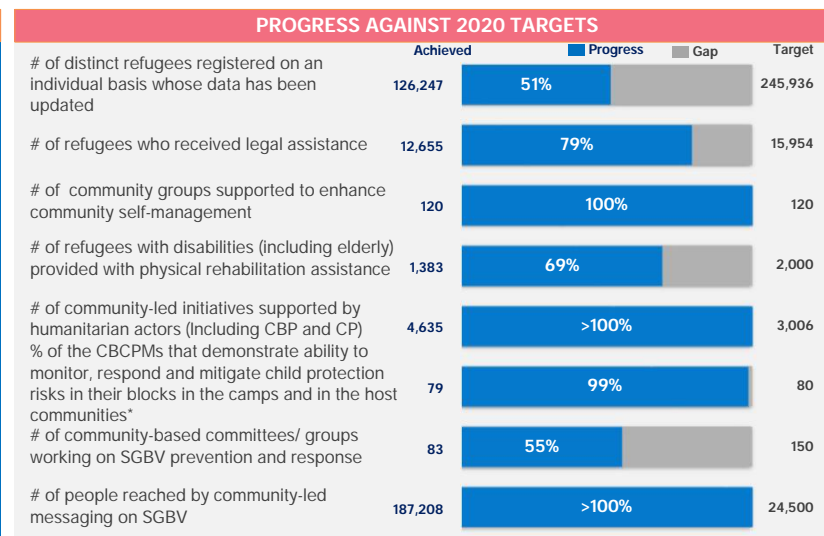
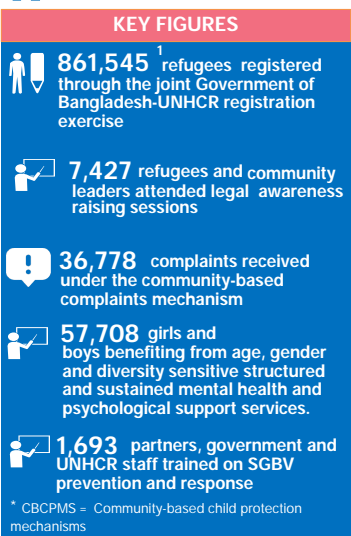
AGE & GENDER BREAKDOWN



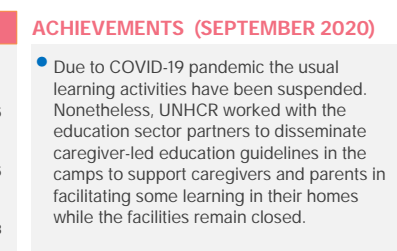
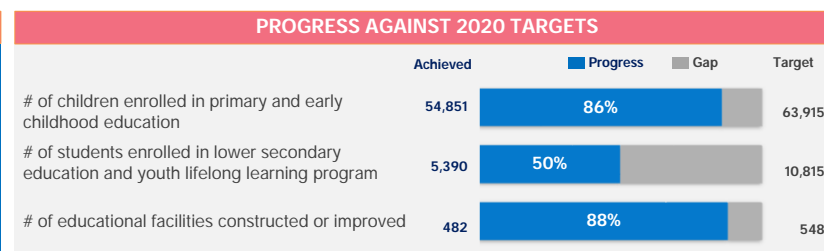
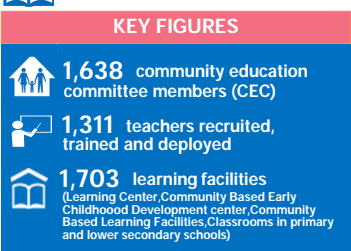
PEOPLE WITH SPECIFIC NEEDS



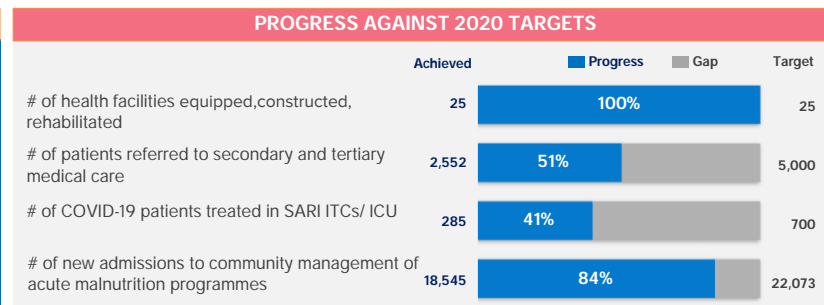
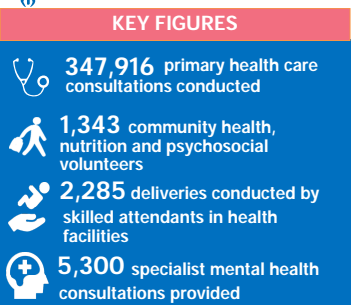
PROTECTION



EDUCATION



HEALTH & NUTRITION



WASH

KEY FIGURES

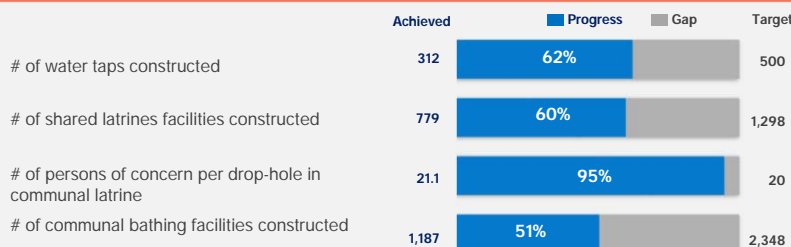
39,583 WASH facilities assessed during a sweep survey in 2019

574 Hygiene volunteers

779 WASH hygiene kits distributed

42,497 tube well and latrine maintenance conducted (repair, renovate, decommission and desludge)

PROGRESS AGAINST 2020 TARGETS



ACHIEVEMENTS (SEPTEMBER 2020)

- **252** WASH facilities have been constructed including **26** water taps and **226** latrines.
- **541** communal bathing facilities were constructed.
- **7,616** WASH facilities were provided with some maintenance, including **1,659** tube wells and **5,957** latrines.

SHELTER

KEY FIGURES ³

28 km of roads and pathways

79 km of drainage

63 km of retaining structures

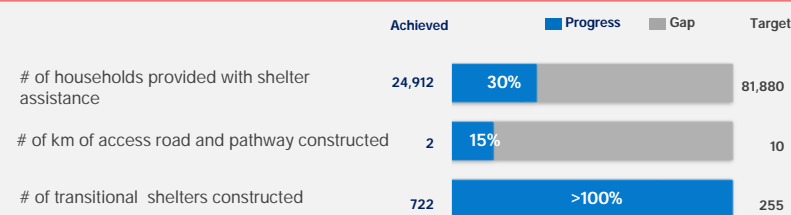
33 km of steps and

4.8 km of bridges constructed

176,156 shelter tie down kits distributed

³ Figures are cumulative since 2019

PROGRESS AGAINST 2020 TARGETS



ACHIEVEMENTS (SEPTEMBER 2020)

- **14,087** partial shelter repair and replacement kits distributed.
- **194** transitional shelters have been constructed.

ENVIRONMENT & ENERGY

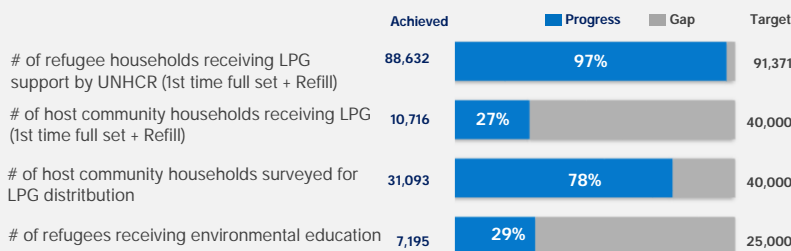
KEY FIGURES

31,093 host community households have been surveyed during LPG distribution assessment

47 conflicts with elephants successfully mitigated by trained ERT* members

* ERT = Elephant Response Team

PROGRESS AGAINST 2020 TARGETS



ACHIEVEMENTS (SEPTEMBER 2020)

- **56** refugee households received 1st time LPG cylinder while LPG refills were distributed to **78,629** refugee households.
- **8,393** host community households have received LPG refill.

NFI & SITE MANAGEMENT

KEY FIGURES

39,200 emergency shelter and WASH kit (PDK) pre-positioned

16 camps managed by site management support agency partners

225,510 female menstrual hygiene kits distributed

PROGRESS AGAINST 2020 TARGETS



ACHIEVEMENTS (SEPTEMBER 2020)

- **135** female menstrual hygiene kits distributed to women age 12 to 59 year old.
- **86** households received core relief items.
- **47,305** households received bathing and laundry soap.

SOCIAL COHESION

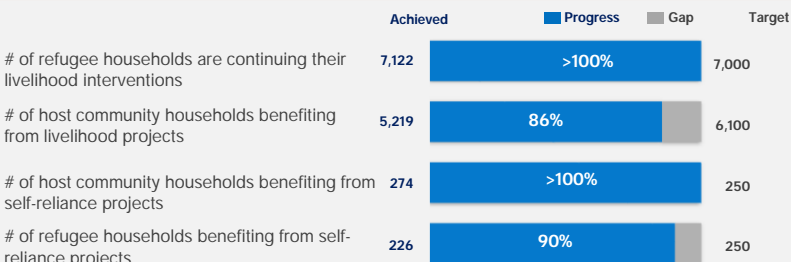
KEY FIGURES

5,219 host community and **6,909** refugee households are continuing to participate in livelihood programmes

500 host community and refugee households enrolled for skill development training for ensuring their self-reliance

* UPGP = Ultra-poor Graduation Program

PROGRESS AGAINST 2020 TARGETS



ACHIEVEMENTS (SEPTEMBER 2020)

- **4,418** new refugee households included to be benefited from 2020 livelihood projects.
- **1,668** host community households have started their livelihood interventions with UPGP projects.

THANK YOU

UNHCR's humanitarian response in Bangladesh is made possible thanks to the generous support of donors who have contributed unrestricted funding to UNHCR's global operations, and to donors who have generously contributed directly to the UNHCR Bangladesh operations.

In 2020, continued generous support has been received from : **Australia, Canada, China, Denmark, the European Union, France, Germany, Ireland, Italy, Japan, the Republic of Korea, the Netherlands, New Zealand, Norway, Sweden, Switzerland, the United Kingdom, and the United States of America.**

UNHCR is sincerely grateful for the additional support received from many individuals, foundations, and companies worldwide including: **Bill & Melinda Gates Foundation, CERF, Education Cannot Wait, and Thani Bin Abdullah Bin Thani Al-Thani Humanitarian Fund.**