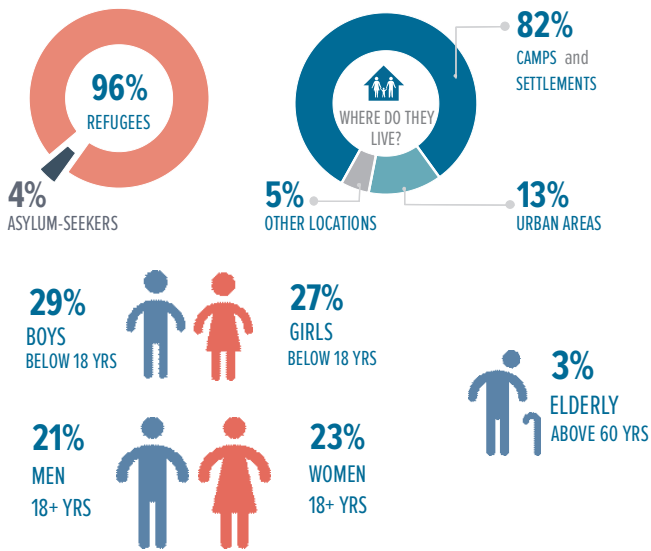


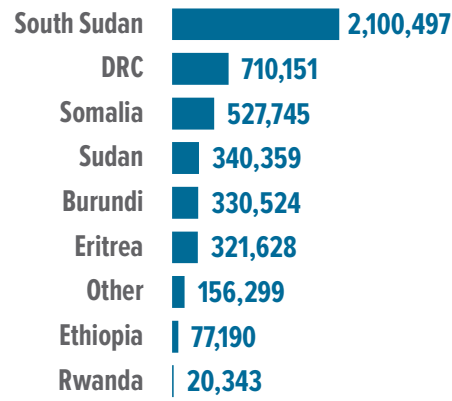
4.58 MILLION
REFUGEES AND ASYLUM-SEEKERS

KEY STATISTICS



TOTALS BY COUNTRY OF ORIGIN

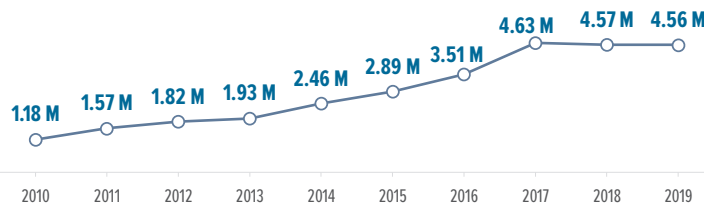
(to the nearest 100)



ANNUAL TREND OF DISPLACEMENT

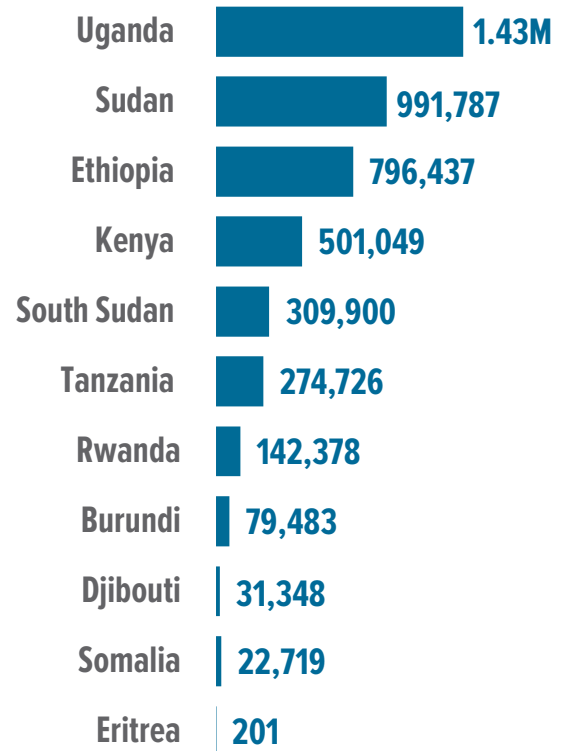
| 2010 to 2019

(in millions)

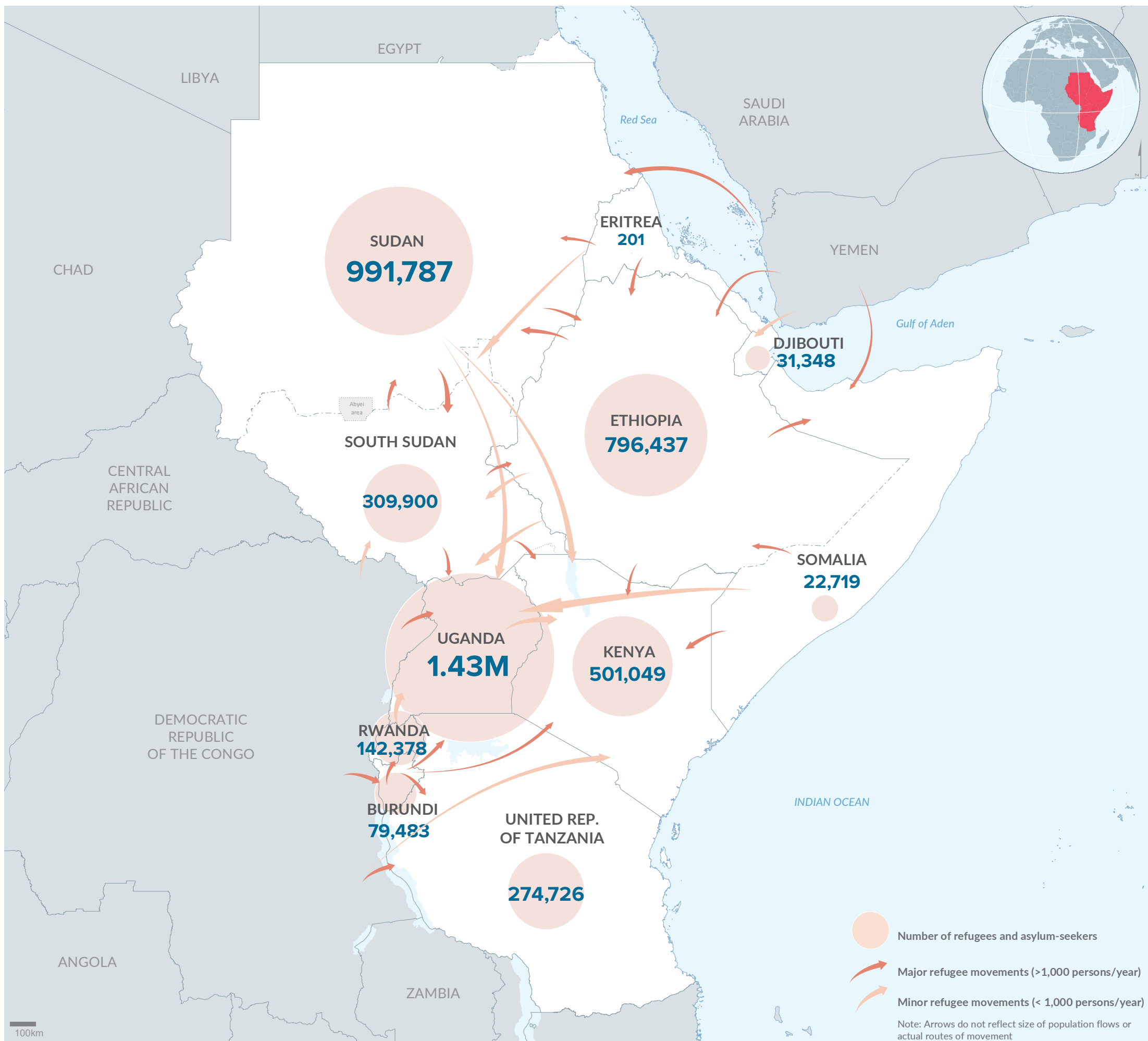


* The decrease in population in 2018/2019 is attributed to the completion of a countrywide population verification exercise in Uganda and Ethiopia; as well as spontaneous refugee returns to Burundi and South Sudan

TOTALS BY HOST COUNTRY



* Somalia figures are as of 30 September 2020



The boundaries and names shown and the designations used on this map do not imply official endorsement or acceptance by the United Nations. Final boundaries between the Republic of Sudan and the Republic of South Sudan and Somalia and Ethiopia has not yet been determined. Final status of the Abyei area is not yet determined.

Creation date: 21 Nov 2020 Sources: Geographic data: UNCS. Population statistics: UNHCR Monthly Statistical Reports 31 October 2020 or latest available. Statistics should be considered provisional and subject to change. Author: UNHCR Regional Bureau for East and Horn of Africa, and the Great Lakes Feedback: kenrgis@unhcr.org