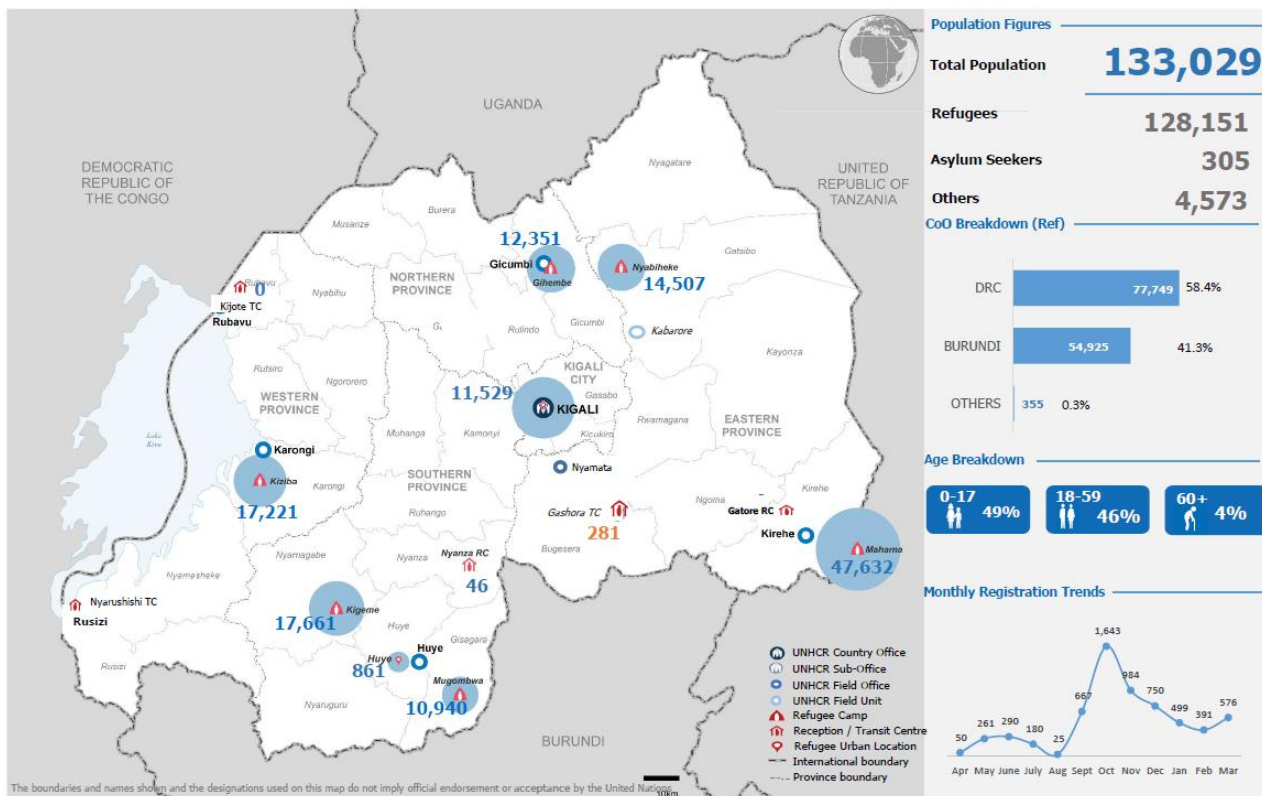


1. Overview on WASH Coverage

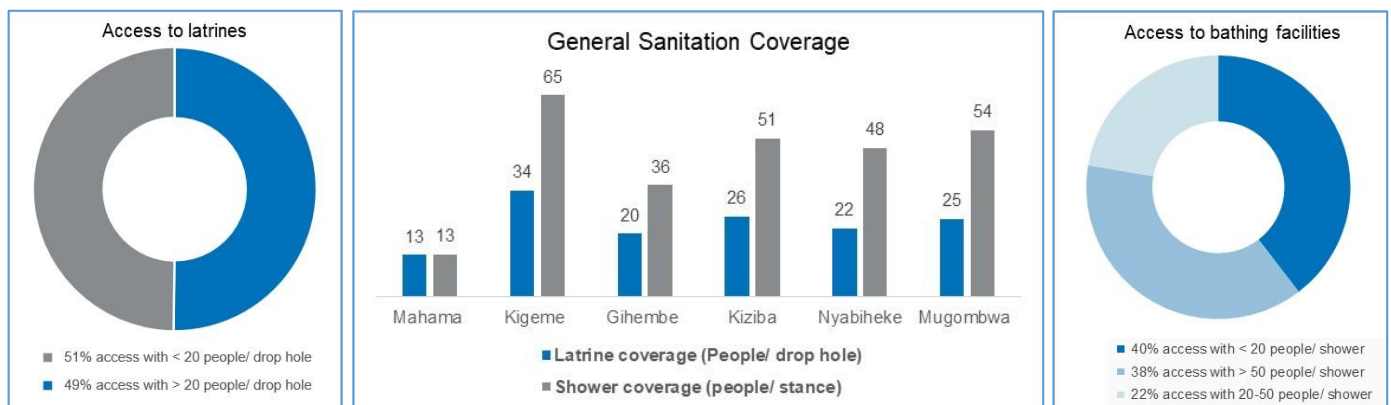
Rwanda is hosting a total refugee population of 128,151 individuals registered as per statistical information of 31 March 2021. With about 91.4% of the population living in the 6 established camps and 4 centres for ETM/ transit/ reception sites with blanket provision assistance on WASH services. Other 8.6% are in urban areas with self-reliance in terms of accessing the WASH related services.

- ❖ Currently 281 asylum seekers evacuated from Libya who are hosted in Gashora ETM Centre under emergency transit mechanism (ETM) response access the adequate WASH services within the standards.

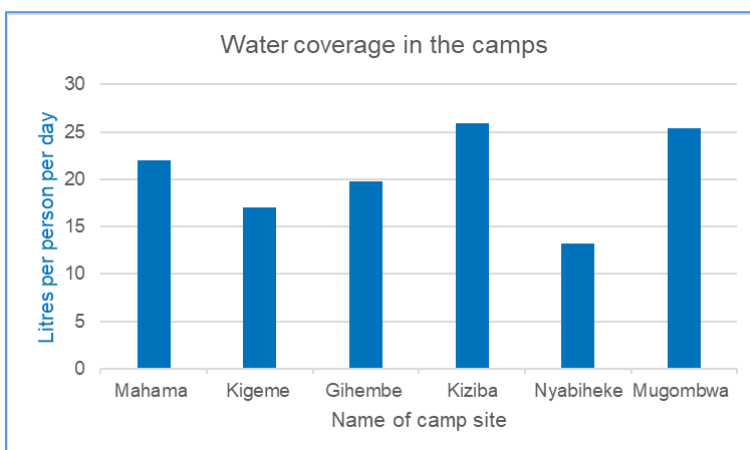
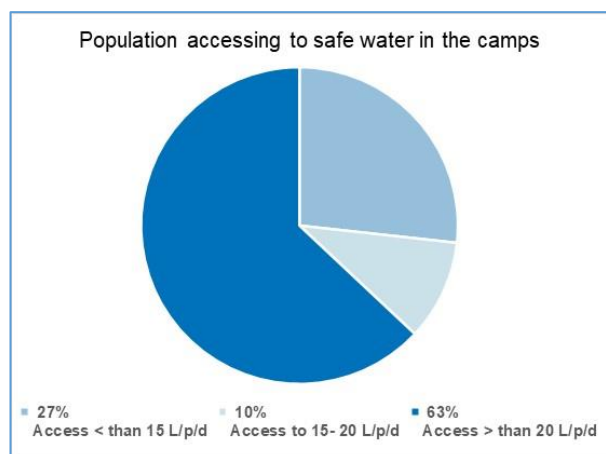


2. Key indicators and gaps

Sanitation coverage in the refugee camp



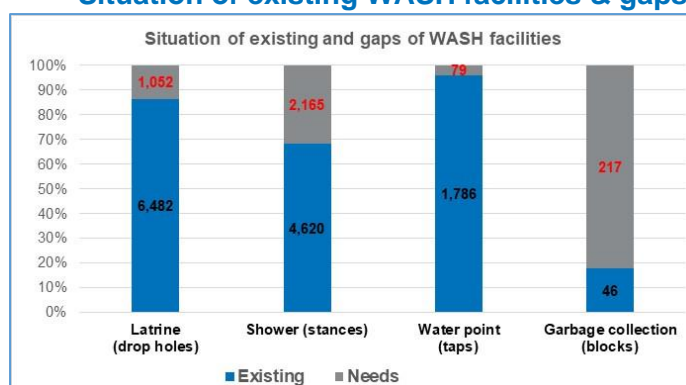
Water supply coverage in the refugee camps



WASH coverage in ETM/Reception centres

SN.	Site Name	Population (March 2021)	People/ latrine drop-hole	Persons/ shower stance	Available water (l/p/d)
Transit/Reception centres					
1	Gashora (ETM)	281	5.5	10	87
2	Nyanza	44	4	2	25
3	Gatore RC	0	0	0	0
4	Kijote TC	0	0	0	0
UNHCR guiding standards			≤50	≤50	≥20

Situation of existing WASH facilities & gaps



- ❖ 21.8% of water supply is from national water networks (managed by WASAC) in the camps and TC/RC.
- ❖ 6.1% and 93.9% of water supply to refugee settings in Rwanda are sourced from boreholes and surface (river)/spring water respectively.

3. Key Developments and Achievements

During the reporting period, following projects were successfully completed/ commissioned or initiated for improving the access to WASH services:

- Commissioned 384 stances of durable shower facilities newly constructed in Gihembe (184) and Nyabiheke (200) camps. A block of 08 latrine drop holes were completed in Gihembe.
- Reconstruction of 36 latrine drop holes in Nyabiheke (24) and Gihembe (12) is in progress.
- Improved the water supply network in Gashora ETM by constructing the elevated steel tank for backup storage of 100m³ and water pipeline rearticulated within the centre.
-

4. Photo gallery for recent key developments



Handover of newly constructed showers



On progress reconstruction of latrines in Nyabiheke