



Performance Snapshot

Quarter 1

Uganda Refugee Response Plan (RRP) 2020-2021

January - March 2021



5,709
Registered Refugees
892 HHs

Lobule Refugee Settlement
Arua Sub-Office



20
Partners

Sector	Actual status per key indicator	Target/Standard (2021)	Actual against annual target or standard
 Education	44% Children of school going age enrolled in primary school <i>(Term I 2020)</i>	110%	
	The Pupil Teacher ratio for Primary School was 1:78 <i>(Term I 2020)</i>	1:71	
 Environment & Energy	10 Households accessed alternative and/or renewable energy <i>(Q1)</i>	1,476 <i>(target)</i> 1/HH <i>(standard)</i>	
	0 hectares of forests, wetlands, riverbanks and lakeshores protected and restored <i>(Q1)</i>	40 ha	
 Food Security	5,822 Refugees received monthly cash for food <i>(In Q1)</i>	5,709 Individuals	
	23% of HH with borderline Food Consumption Score <i>(In Q1)</i>	20% <i>(2020 target)</i> <20% <i>(standard)</i>	
 Health & Nutrition	The severe Acute Malnutrition recovery rate was 81.4% <i>(In Q1)</i>	75% <i>(target)</i> > 75% <i>(standard)</i>	
	The under-five mortality rate was 0.1 per 1,000 children <i>(In Q1)</i>	0.1 <i>(target)</i> < 1.5 <i>(standard)</i>	
 Livelihoods & Resilience	46 Refugee households received emergency livelihood support <i>(Q1)</i>	482 HHs	
	0 Refugees received financial literacy training <i>(Q1)</i>	1,000 Individuals	
 Child Protection	09 Children received individual case management services <i>(Q1)</i>	168 Individuals	
	24 GBV Survivors received appropriate multi-sectoral support <i>(Q1)</i>	100 Individuals	
 Protection	269 Refugees received psychosocial support <i>(Q1)</i>	600 Individuals	
	220 Refugees received legal assistance and legal aid services <i>(Q1)</i>	7,000 Individuals	
 Shelter, Settlement & NFI	0 Refugee households with specific needs assisted with semi-permanent shelter <i>(Q1)</i>	20 HHs	
	0 kms of roads rehabilitated (including roadside vegetation) for all-year access to community services <i>(Q1)</i>	10 Kms	
 Water, Sanitation & Hygiene	Refugees received 19.5 litres per person per day <i>(In Q1)</i>	20 liters <i>(target)</i> 20 liters <i>(standard)</i>	
	79% Refugee households had access to latrine <i>(In Q1)</i>	100% <i>(target)</i> ≥ 85% <i>(standard)</i>	
 Cash-Based Interventions	0 Households received any form of cash and voucher assistance <i>(including cash for food) (Q1)</i>	1,000 HHs	
	0 Households assisted with cash and voucher for basic needs <i>(including multipurpose cash) (Q1)</i>	1,000 HHs	



Operational Presence

Quarter 1

Lobule Refugee Settlement

January - March 2021



05
National
Partners



08
International
NGOs



05
UN
Agencies



02
Government
Partners



Partner/Sector	Education	E&E	Food Security	Health & Nutrition	Livelihood	Protection	CP	GBV	SSNFI	WASH	CBI
ACAV					OP						
ACF				OP							
AFOD			IP								
AIRD									IP		
AVSI				IP							
C-TEN						IP					
DCA											
JAM					OP						
HADS		IP				IP	IP	IP			
IDI				OP							
KDLG	G	G		G						G	
LWF				IP							
OPM						G	G	G	G		
TPO				OP		IP					
UNFPA				A							
UNHCR	A	A		A	A	A	A	A	A	A	
UNICEF				A							
URDMC									IP		
WFP			A	A							
WHO				A							
Total #	02	03	02	11	03	05	03	03	04	02	00

A = United Nations (UN) Agency

GP = Government Partner

IP = UN Implementing Partner

OP = Operational Partner

Associazione Centro Aiuti Volontari (ACAV)

Humanitarian Assistance and Development

United Nations Population Fund (UNFPA)

Action Against Hunger (ACF)

Services (HADS)

United Nations High Commissioner for

Alliance Forum for Development (AFOD)

Infectious Disease Institute (IDI)

Refugees (UNHCR)

African Initiatives for Relief and Development
(AIRD)

Kagumu Development Organization (KADO)
Koboko District Local Government (KDLG)

United Nations International Children's
Emergency Fund (UNICEF)

Community Empowerment for Rural Develop-
ment (CEFORD)

Malaria Consortium
Office of the Prime Minister (OPM)

Uganda Refugee and Disaster Management
Council (URDMC)

Community Technology Empowerment

Partners in Community Transformation

World Food Programme (WFP)

Network-Uganda (CTEN-Uganda)

(PICOT)

World Health Organization (WHO)

DunChurch Aid (DCA)

Transcultural Psychosocial Organization

Windle International Uganda (WIU)

Joint Aid Management (JAM)

(TPO)

World Vision International (WVI)

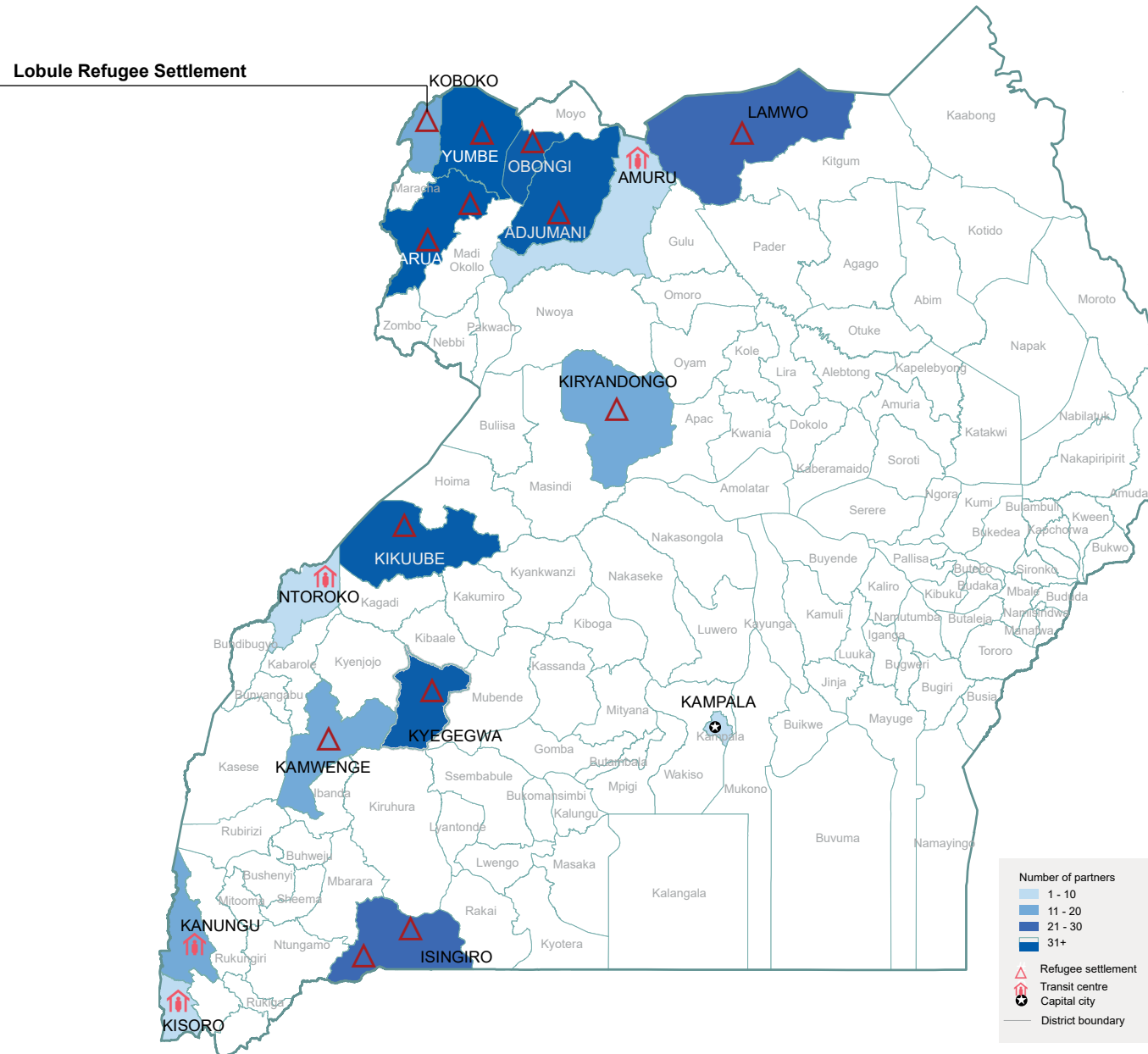


Operational Presence

Quarter 1

Map of Uganda Showing Location of Settlements and number of partners

January - March 2021



The boundaries and names shown and the designations on this map do not imply official endorsement or acceptance by the United Nations