

Introduction to Graduation for Persons of Concern

Rose Wilder

Livelihood and Resilience Sector Working Group

Objectives

- Provide an overview of the Graduation Approach and its main components
- Highlight key factors to consider when designing Graduation programming to serve refugees and other persons of concern
- Share some lessons learned/success factors from work with UNHCR and other implementing partners



Background

Trickle Up, est. 1979



Economic development with strong focus on families facing multiple levels of exclusion:

People with disabilities

Indigenous populations

Scheduled castes

Refugees and other persons of concern

Scaling Graduation with government and institutional partners:

Municipal & National governments in Latin America

State governments in India

World Bank in West Africa

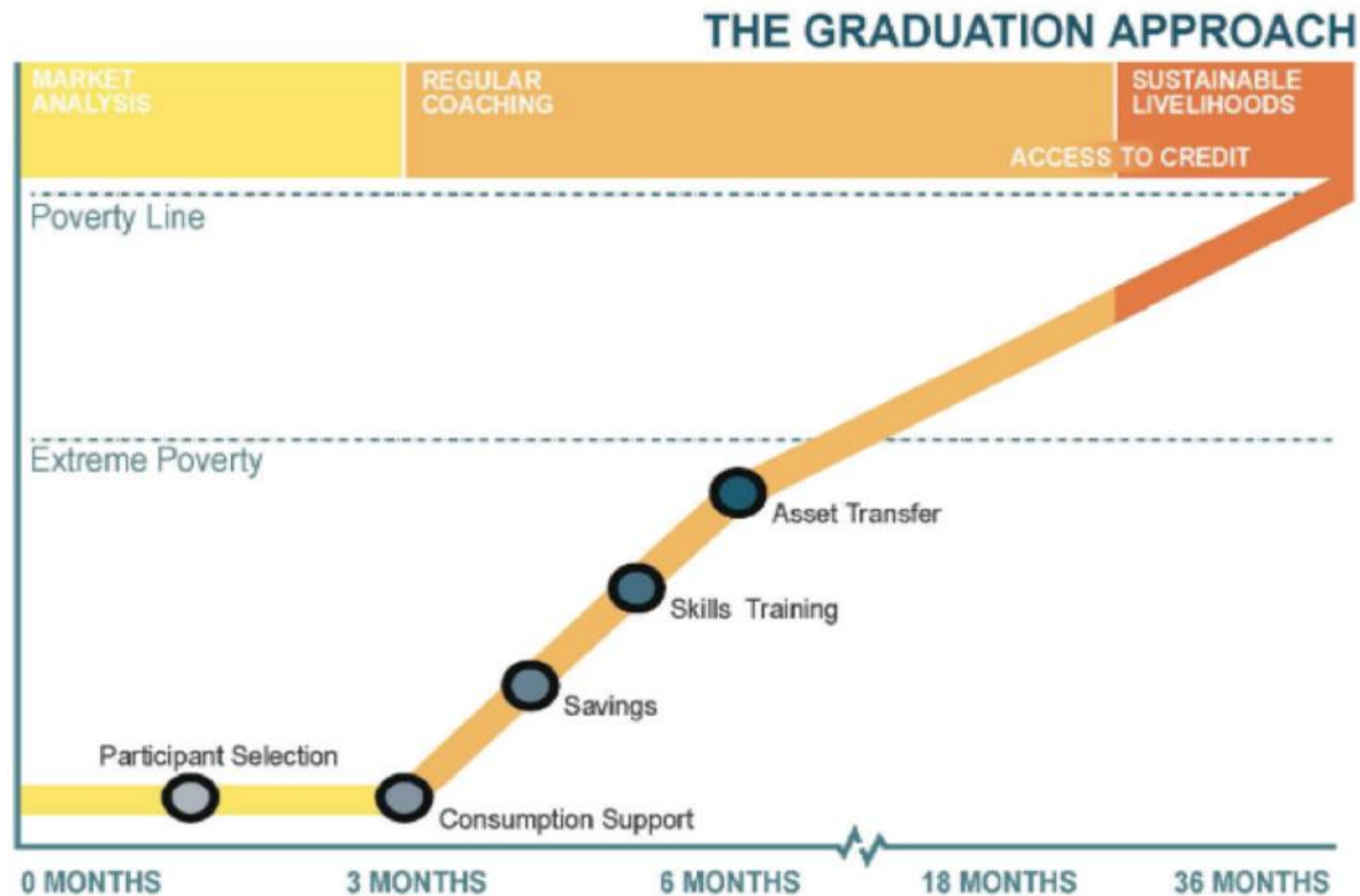
UNHCR & INGOs, Global

Graduation Approach

A sequenced and time-bound intervention that aims to help people living in extreme poverty build resilience and engage in sustainable livelihoods.



Graduation Approach Sequence



Source: S. Hashemi, A. Montesquiou. Reaching the Poorest: Lessons from the Graduation Model, Focus Note No. 69, CGAP, Washington, DC, 2011, p. 3)

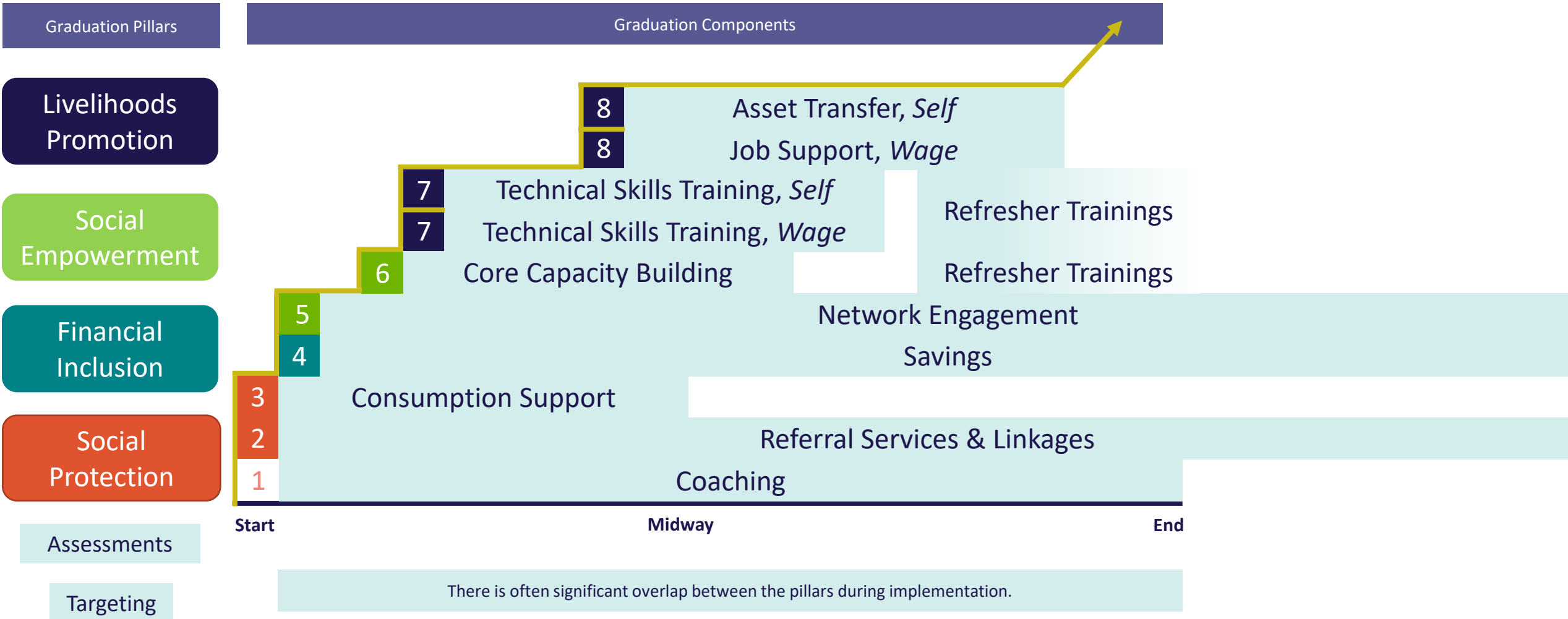
Addressing Vulnerabilities Faced by PoCs



Vulnerabilities
Lack legal and physical protection and access to basic services and assistance in health, nutrition, WASH, food, shelter, energy, and education
Limited right to work Livelihood opportunities often do not align with PoCs' existing knowledge and skills
Arrive in their country of asylum with little or no assets or savings Often ineligible to access financial services due to legal restrictions and/or lack of documentation Face informal barriers, including physical access (proximity) and discrimination
Suffer from various forms of social dis-empowerment, including discrimination, isolation, and having little influence over programs that impact their lives

*Adapted from BRAC's Foundational Graduation Pillars

Graduation Approach: Components



Why Graduation for PoCs?

- Increasing number of persons of concern & decreasing funding
 - Increasing length and number of protracted refugee situations
- Increase self-reliance and decrease dependence on short-term funding
 - Sustainable livelihoods approach
 - Improved well-being
- Innovations in various contexts
 - Wage and self-employment
 - Can be adapted to rural, urban, peri-urban or camp settings
- Development/ humanitarian actors are already offering many components of the Graduation Approach
 - Reorient service delivery from a sectoral lens to a participant-centered lens
 - Right participants get the right services at the right time
 - Relative cost could be lower than traditional humanitarian programming, especially over time

Thank you

Rose Wilder

Uganda Program Manager, Refugee Affairs

rwilder@trickleup.org

trickle^{UP}



USAID
FROM THE AMERICAN PEOPLE



People for development

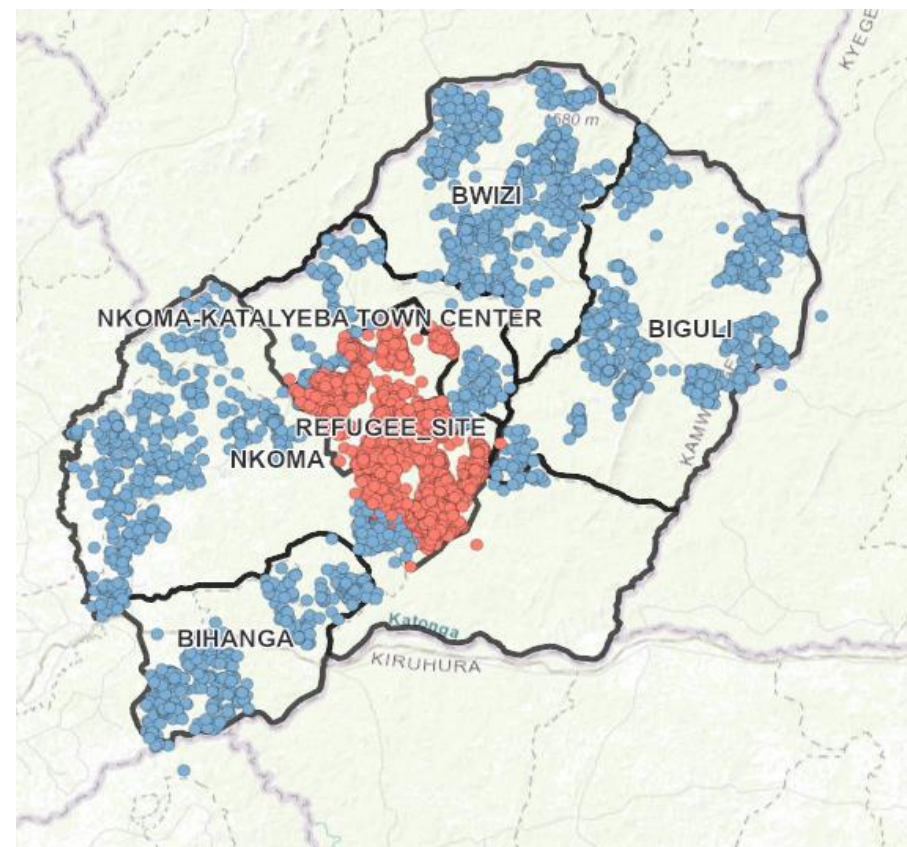


Graduating to Resilience Activity

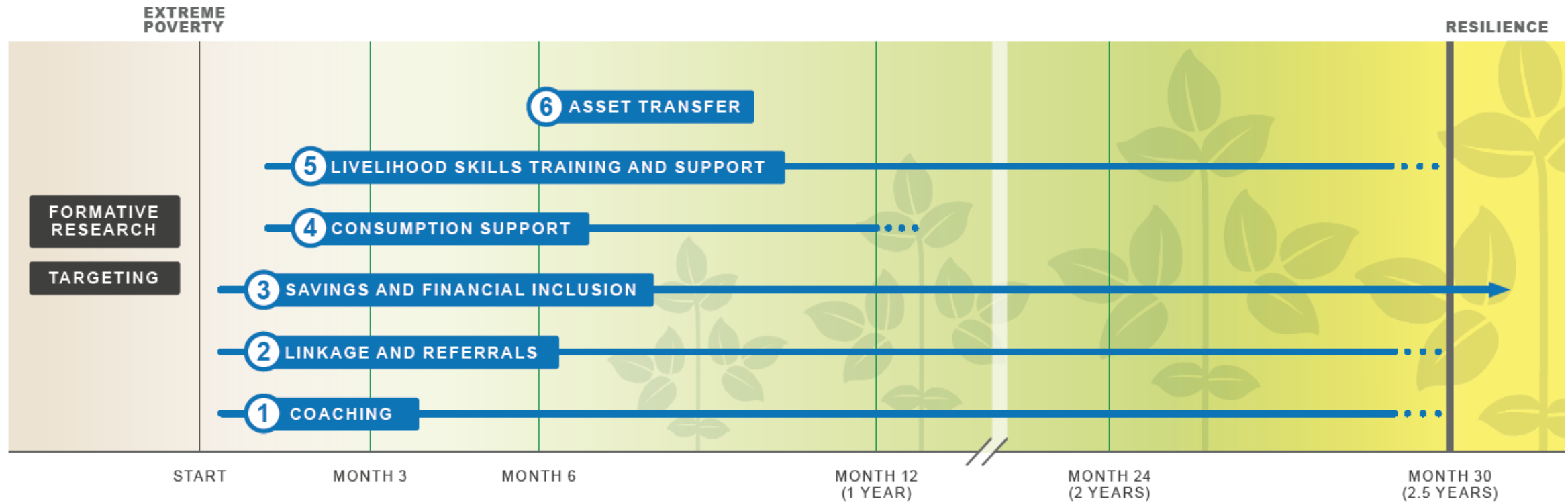
Activity Summary

- **Goal:** Extremely poor refugee and Ugandan HHs in Kamwenge district graduate from conditions of food insecurity and fragile livelihoods to self reliance and resilience
- **Budget:** \$36.7 million from USAID Bureau for Humanitarian Assistance
- **Implementer:** AVSI with Trickle UP and IMPAQ International + External Evaluator – Innovations for Poverty Action (IPA) conducting an RCT
- **Period:** Oct 01, 2017 to Sept 30, 2024 (7 Years) in 2 cohorts + 1 year refinement
- **Target:** 13,200 HHs (50% host / 50% refugee)
- **Participants:** Women and youth as primary participants with their households
- **Cohort 1 Target:** 6,629 Participants and 37,585 members, Now 5,638 participants with 36,830 members active (15% drop out due to relocations)

Blue: Host, Red: Refugee Households.



Activity Sequencing



**Now at
month 31 –
cohort 1
ended**

Components Across Treatment Arms

PROGRAM COMPONENT	ARM 1 STANDARD GRADUATION	ARM 2 GROUP COACHING	ARM 3 EMPOWERMENT MODEL
Consumption Support	●	●	●
Livelihood Skills Training and Support	●	●	●
Savings and Financial Inclusion	●	●	●
Asset Transfer	●	●	—
Coaching	INDIVIDUAL	GROUP	INDIVIDUAL
Linkage and Referrals	●	●	●



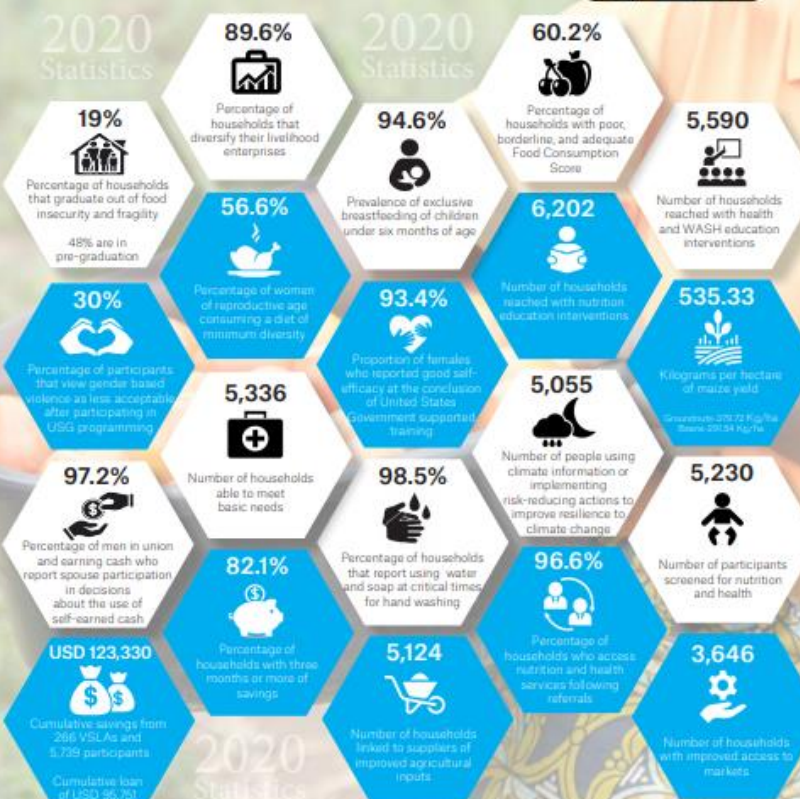
GRADUATING TO RESILIENCE

The seven-year USAID Graduating to Resilience Activity led by AVSI Foundation in partnership with TrickleUp and IMPAQ International engages both refugee and host community households in the Kamwenge District in South West Uganda to graduate from conditions of food insecurity and fragile livelihoods to self-reliance and resilience.

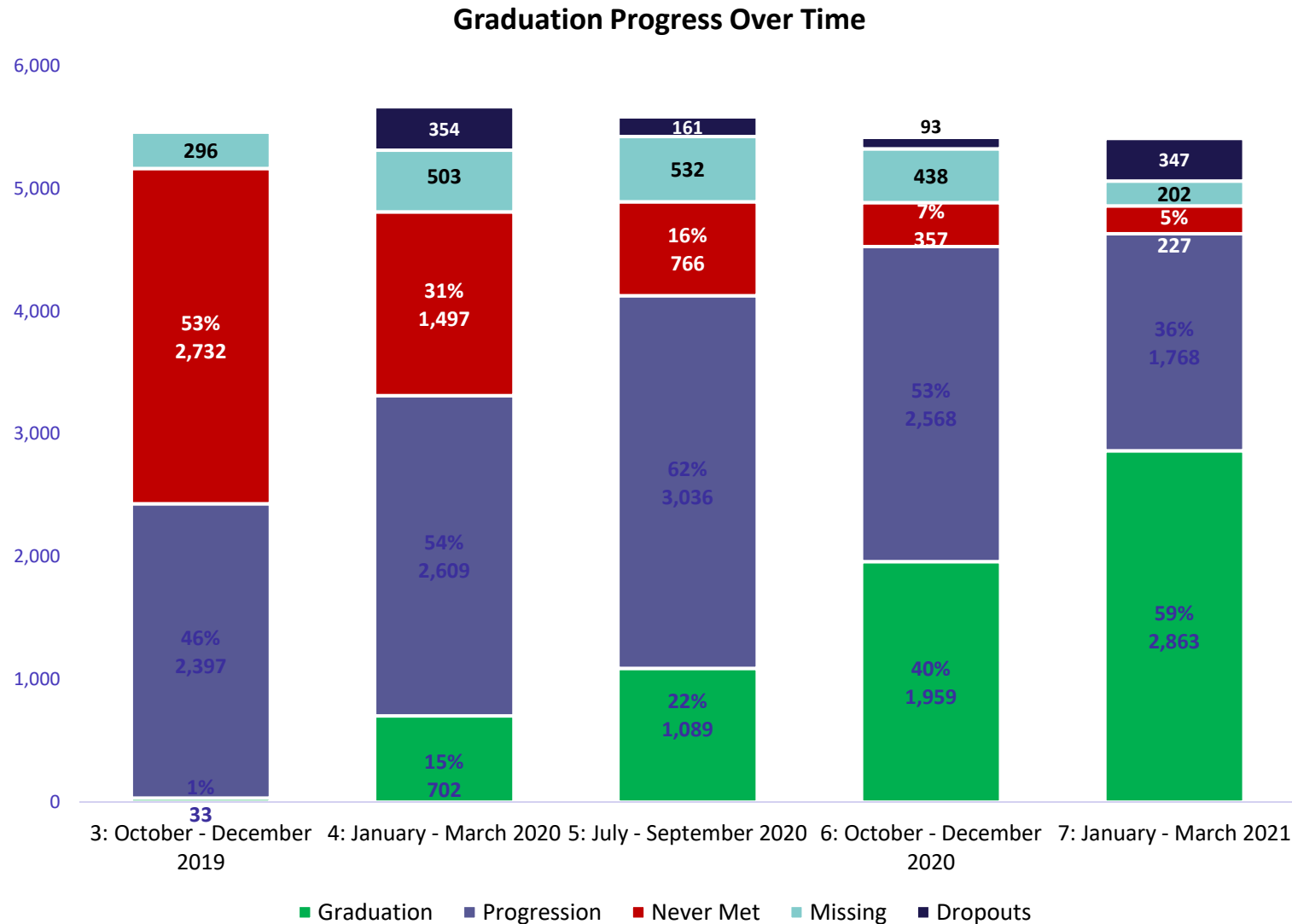
The Activity initially enrolled 6,629 households, however due to several reasons including most commonly relocations, 991 (14.9%) households have dropped out. The Activity maintains a total of 5,638 households who have been actively involved in coaching sessions, savings groups, training sessions on business topics and financial literacy and on-going nutrition education and screening.

The Activity was designed to demonstrate the effectiveness of the Graduation Approach to achieve sustainable food security, nutrition and poverty reduction goals in Kamwenge district in Uganda.

The Activity thus far has reached 95 percent (5,356) of households with core market-based business and technical skills hence resulting in a nearly universal increase in asset base of 98.9 percent.



Current Graduation Results



#	Criterion
1	In the last 1 month, was there a time when you (or a member of your household) reduced meal size or skipped a meal <u>because of lack of money or other resources?</u>
2	In the last week, did all your household's meals contain foods from the 3 food groups GO, GRO, and GLO?
3	How many sources of income does your HH have?
4	Do you live in an improved structure?
5	Are your school-aged children are going to school?¹
6	In the last 3 months, were you able to get healthcare services for you and your household when you needed them?
7	How often does your household drink safe water?
8	Do you have access to a hand washing facility and is there soap and water at the hand washing facility?
9	How much do you have in savings?
10	If you or a member of your household had a problem <u>that your household cannot solve on its own</u> , who could you turn to for support?
11	I can set goals to improve the well-being of my household and achieve them.

Graduation Results by treatment arm

Stage	Definition	Host		Refugee		Total	
		# HHs	% HHs	# HHs	% HHs	# HHs	% HHs
Graduation	Met the criteria at least three times consecutively	1531	62%	1332	55%	2863	59%
Progression	Household is working towards graduation but has yet to meet all criteria three times consecutively.	800	33%	968	40%	1,768	36%
Never Met	Never met grad criteria	124	5%	103	4%	227	5%
Total		2,455	100%	2,403	100%	4,858	100%

Sub-Stage	Definition	Arm 1		Arm 2		Arm 3		Total	
		# HHs	% HHs	# HHs	% HHs	# HHs	% HHs	# HHs	% HHs
Graduation	Met the criteria at least three times consecutively	1053	64%	981	61%	830	52%	2863	59%
Progression	Household is working towards graduation but has yet to meet all criteria three times consecutively.	505	31%	587	36%	676	42%	1768	36%
Never Met	Never met grad criteria	78	5%	51	3%	98	6%	227	5%
Total		1636	100%	1619	100%	1603	100%	4858	100%



USAID
FROM THE AMERICAN PEOPLE



People for development

Questions



USAID
FROM THE AMERICAN PEOPLE



People for development

“This publication is made possible by the generous support of the American people through the Office of Food for Peace, the United States Agency for International Development (USAID) under the terms of Cooperative Agreement No. AID-FFP-A-17-00006. The contents are the responsibility of AVSI Foundation and Graduating to Resilience Activity and do not necessarily reflect the views of USAID or the United States Government.”

Graduating to Resilience is implemented by AVSI Foundation in partnership with

