

UNHCR

An introduction to Social Protection

Clare Gardner, Senior Social Protection Officer,
UNHCR Regional Bureau for East, Horn of Africa and the Great Lakes

What we will cover

- What is social protection.
- Relevance of social protection to UNHCR.
- Overview of social protection systems across the region.
- Inclusion of PoC in social protection systems.

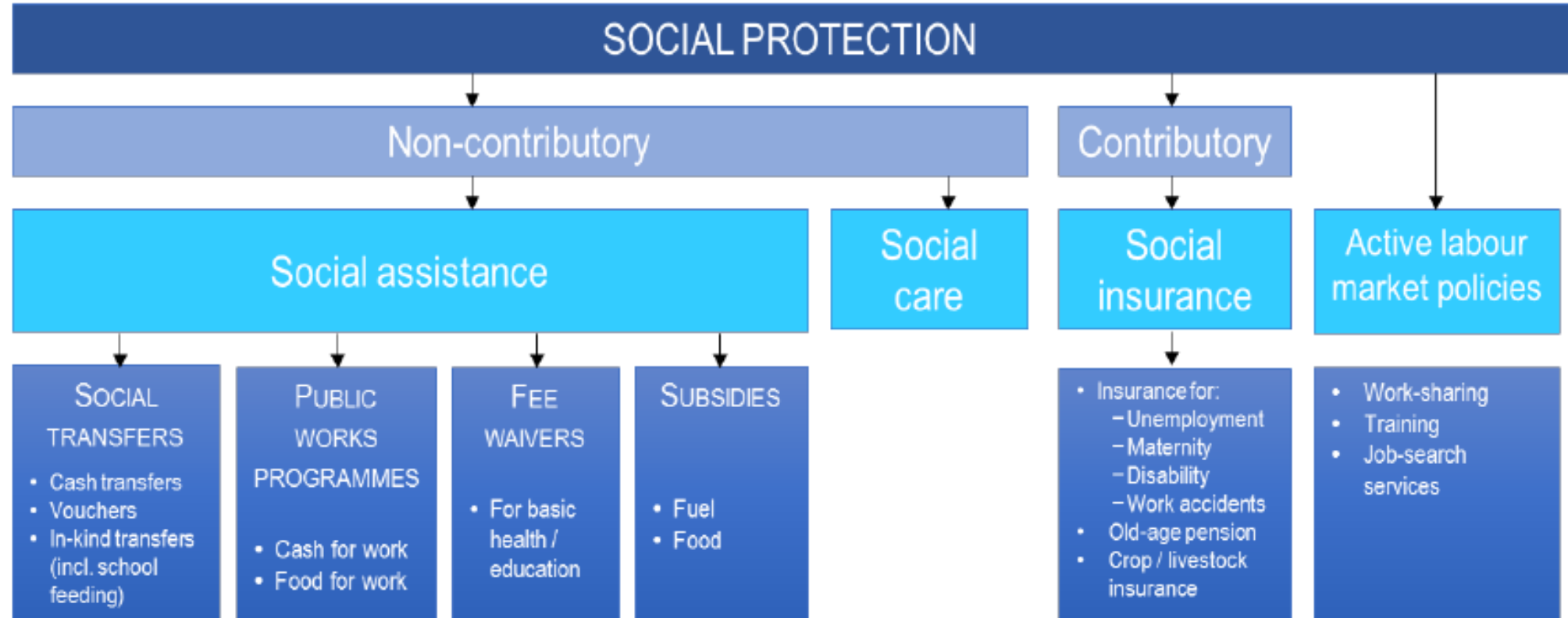


What is Social Protection?

- Set of policies and programmes aimed at preventing or protecting people against poverty, vulnerability and social exclusion throughout their life-course, with particular emphasis on vulnerable groups.
- Mix of non-contributory interventions (social assistance) and contributory schemes (social insurance and active labour market policies).
- Ideally follows a life cycle approach.
- Inclusion of PoC in SP systems, where possible and appropriate, often serves the overall protection and solutions mandate of UNHCR and has a long-established legal footing



Typology of Social Protection?



Long-term economic opportunities

Rights-based inclusion
'Leave no-one Behind'

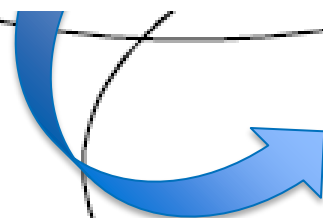
Social Services



Labour-market interventions
Access to informal & formal work

Social Assistance
Non-contributory cash &

Inclusion to social protection systems must serve protection and solutions strategies

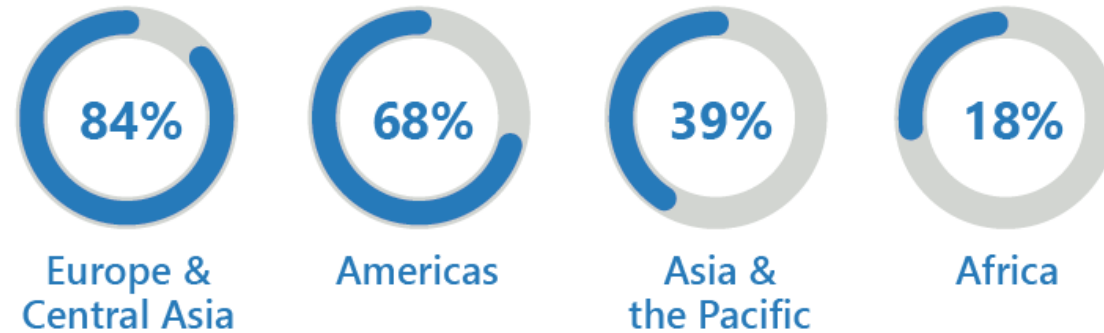


Social Insurance
Contributory work and health insurance schemes and products

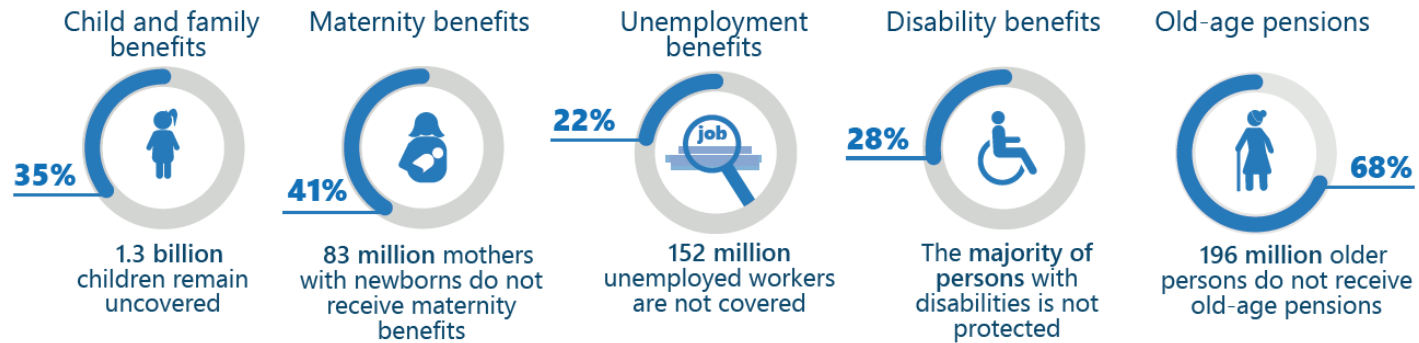
Social Registry – gateway to multiple services

Social Protection Coverage

Population receiving at least one social protection benefit (SDG 1.3)



Social protection coverage (SDG 1.3) by population groups



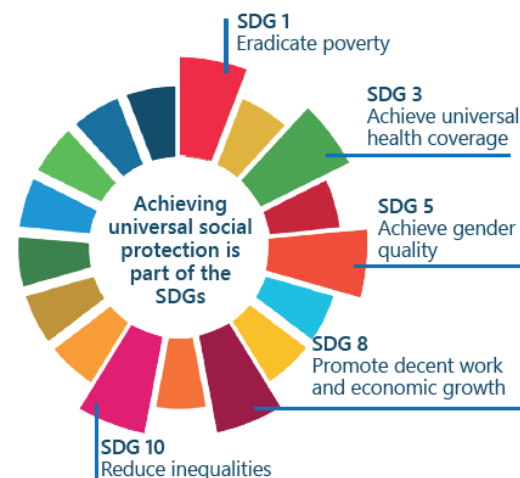
Source: https://www.ilo.org/global/about-the-ilo/multimedia/maps-and-charts/WCMS_607273/lang--en/index.htm

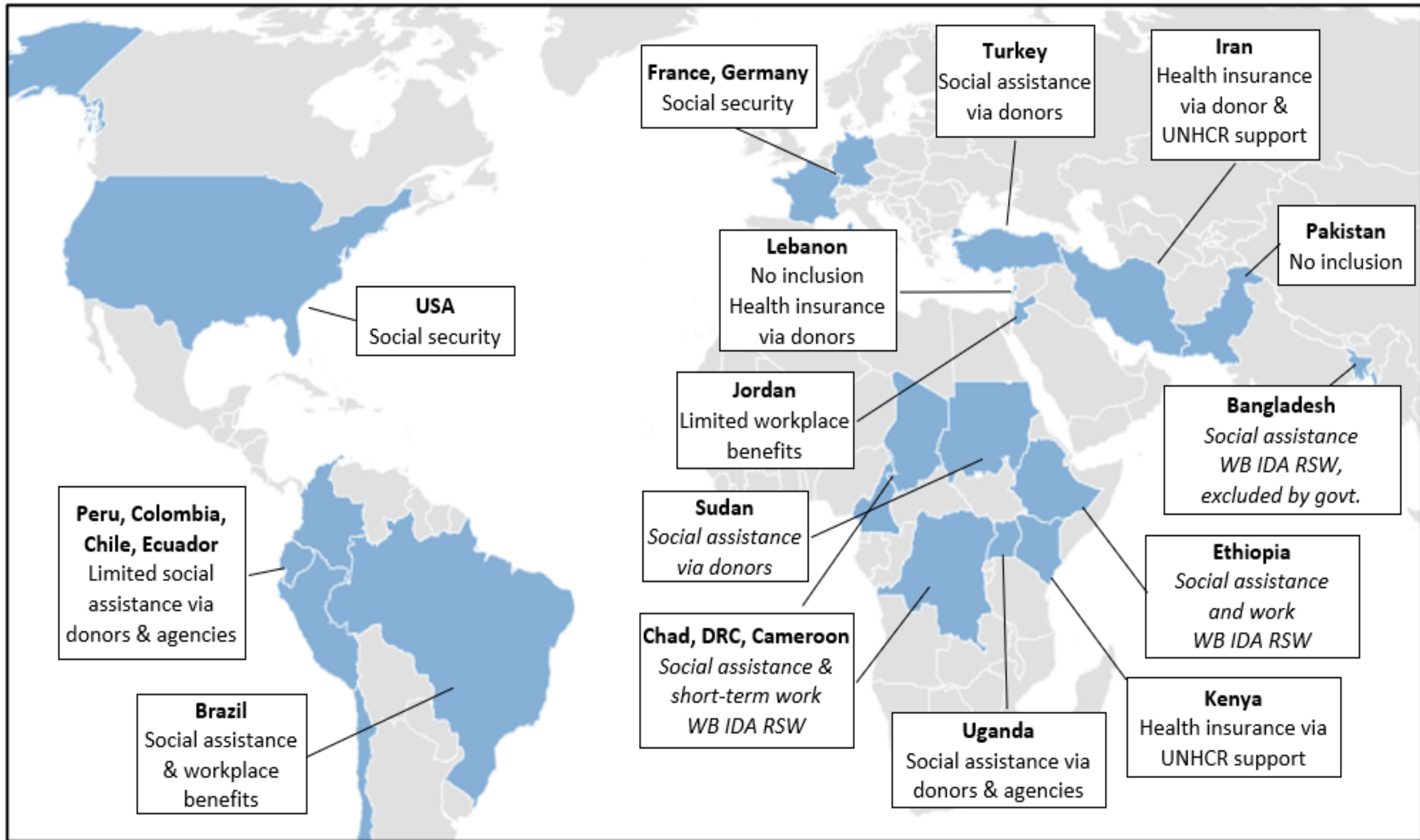
Why are we talking about social protection?

- Protracted displacement - Distinction between short-term emergencies & long-term development blurred – IGAD region average 11years+.
- In several refugee situations, UNHCR assistance has been performing the same role as social safety nets for decades and using similar tools.
- Area based approach - host & refugee communities & strengthen government capacity.
- Operationalising aspirations of the GCR, SDG ‘Leave No-One Behind’ principle and SDG-specific objectives.
- The growing coverage of SP systems.

Humanitarian objectives	...map to...	Social protection objectives
Keep people alive	↔	Protect people through life-course
Alleviate suffering	↔	Protect from poverty
Maintain human dignity	↔	Promote human dignity
Provide basic needs	↔	Support livelihoods
Provide basic social services	↔	Support access to social services
Provide child and family services	↔	Support child and family services
Provide labour opportunities	↔	Support access to labour markets

Figure 2 Convergence of humanitarian and social protection objectives
Source Authors, building on Cherrier et al. (2017b).





Social Protection across the region



- Systems are largely nascent or in development
- Safety nets are the common entry points
- Rural focus
- First priority to serve own population

© UNHCR

Refugee inclusion in government social protection programmes

Pathway: development of a comprehensive social protection system

	Nascent system	System in development	Well-developed system
Pathway: inclusion into government programmes <i>(actual or planned)</i>	Burkina Faso, Somalia, Niger, Tanzania	Malawi, Bangladesh, Myanmar, Uganda	Lebanon, Iraq, Pakistan, Malaysia
	Cameroon, Djibouti, Sudan, <i>Burundi</i>	Ethiopia, Ghana <i>Kenya, Rwanda</i>	Colombia, Mexico, Jordan, <i>Iran,</i> Ecuador, Paraguay, India
	Mauritania, RoC, Chad, DRC	Dominican Republic	South Africa, Brazil, Turkey, EU countries

Legal framework **in place, to be reinforced** *Health insurance subsidised by UNHCR*

Inclusion Enabling Factors

- Protection policy environment & recognition of socio-economic rights provides a gateway to govt SP.
- International financing underwriting costs of inclusion.
- Government capacity central and local levels.
- Enrolment in social registries.
- Ability to meet eligibility criteria for enrolment.
- Accompanying & monitoring inclusion.



Inclusion – Examples from this Region



Djibouti

- Refugees for the first time included in the PSNF through the IDA 18 RSW SSN project.
- 1000 urban refugee households biometrically enrolled to the government social registry to access COVID-19 vouchers.
- Inclusion in health services, education and urban infrastructure.

Kenya

- NHIF urban (22,500), planned expansion to camps, child protection.
- Exploring inclusion of refugee data in the ESR and urban refugee pension pilot.

Rwanda

- Urban refugees in Kigali are supported by the Community-Based Health Initiative (CBHI).
- Plan to expand CBHI to refugee camps in the future.

Inclusion – Examples outside region



Republic of the Congo – WB IDA RSW additional financing Lisungi social safety net project. Roll out to remote rural Likouala where more refugees are located and cities of Brazaville and Pointe Noire. Enrolment of eligible refugees & hosts into social registry.

South Africa – Refugees Act grants rights to employment & access social services. Recognized refugees can access social grants as nationals (child support, disability, elderly, social relief in distress) through the South Africa Social Security Agency.

Cameroon - WB IDA18 RSW access for refugees from CAR to SSN (CTs, shock responsive cash, public works, IGA support) & RSW health, education & community development infrastructure.

What is UNHCR's role in social protection?

UNHCR is not mandated to build government social protection systems, but we can collaboratively support refugee-hosting governments to develop social protection policy frameworks that are inclusive of refugees and asylum seekers through;

Helping governments and development actors open windows of inclusion in existing social protection programmes & shock-responsive mechanisms.

Progressively align UNCHR assistance to these and set up referral processes.

Ensure coherent action by all actors across the humanitarian-development nexus through a government-led transition action plan.

Support scalable shock responsive mechanisms that are inclusive of refugees and preparing an exit strategy for this assistance.

Exceptionally directly assist the government to operate social protection programmes where governments may lack critical capacity.

UNHCR Social Protection EHAGL

01

Engaging country programmes & SP training

02

Mapping – policies, programmes, stakeholders

03

Identifying existing inclusion of UNHCR PoC in SP

04

Identifying opportunities for inclusion of PoC

05

Developing a regional strategy for social protection

Thank you

Questions & Discussion

