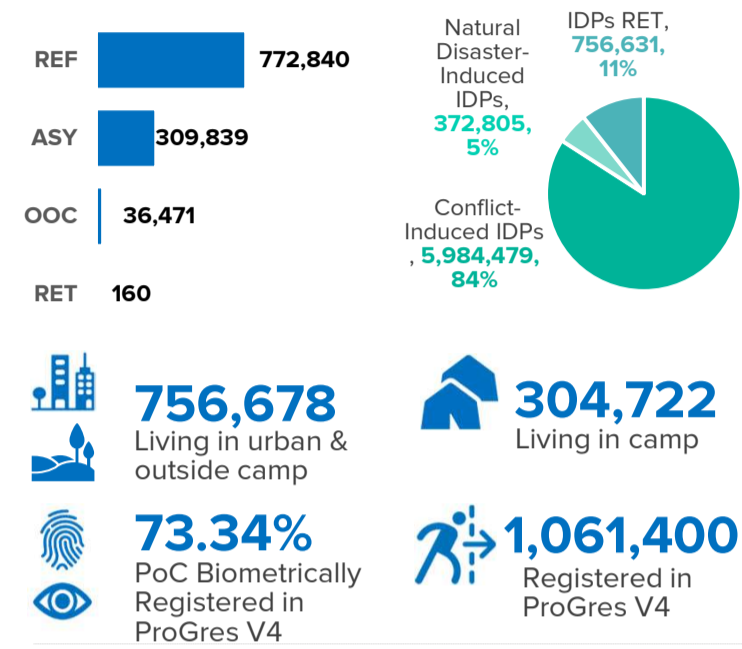
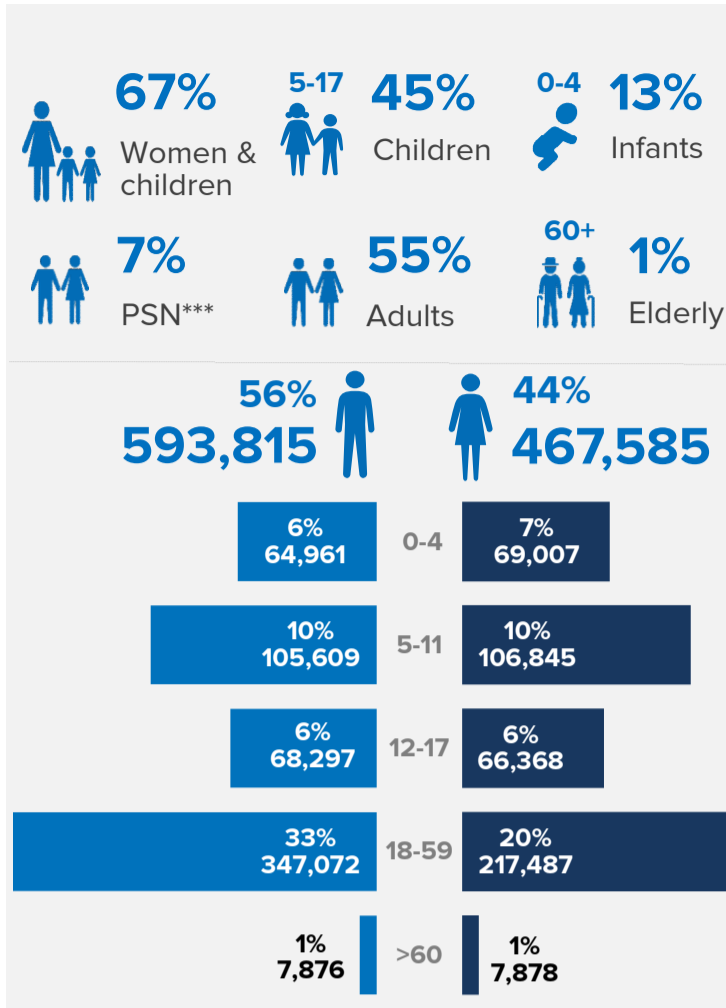


**KEY FIGURES**



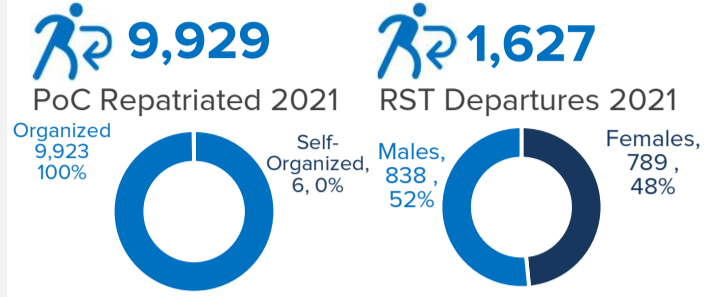
**AGE & GENDER\* (POC registered in ProGres V4)**



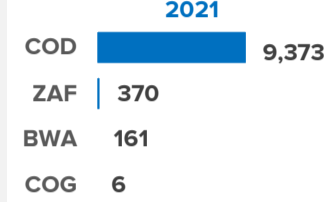
**CONTEXT**

RBSA Population Statistics are compiled monthly from country reports. For refugees and asylum-seekers, the data sources are proGres, the Government of South Africa (as of 31 Oct 2021) and from the Governments of Angola, DRC, Zambia, and Zimbabwe for unregistered or self-settled populations. IDPs and IDP Returnees data are sourced from Governments and the UN (OCHA and IOM).

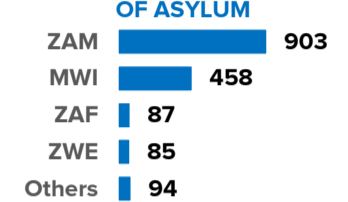
**DURABLE SOLUTIONS**



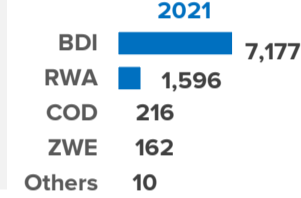
**COUNTRIES OF ASYLUM 2021**



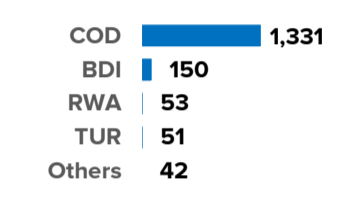
**DEPARTURES BY COUNTRIES OF ASYLUM**



**COUNTRIES OF RETURN 2021**

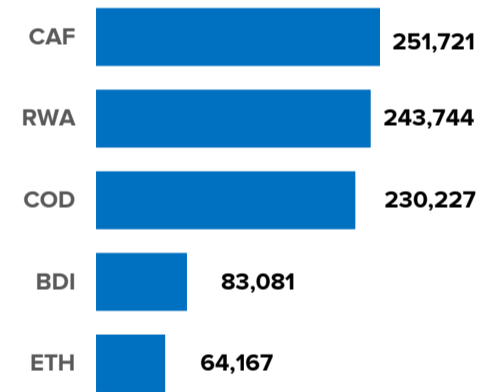


**RESETTLED INDIVIDUALS COO**

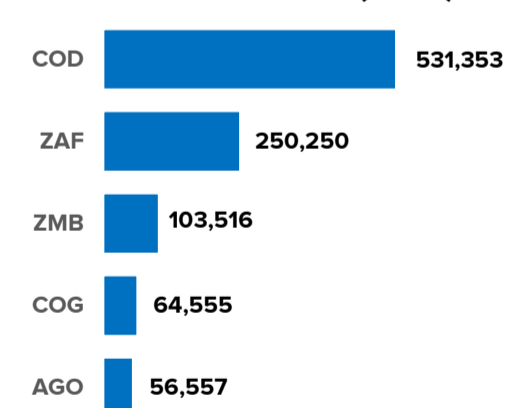


**REF, ASY, OOC, IDP, RET\*\***

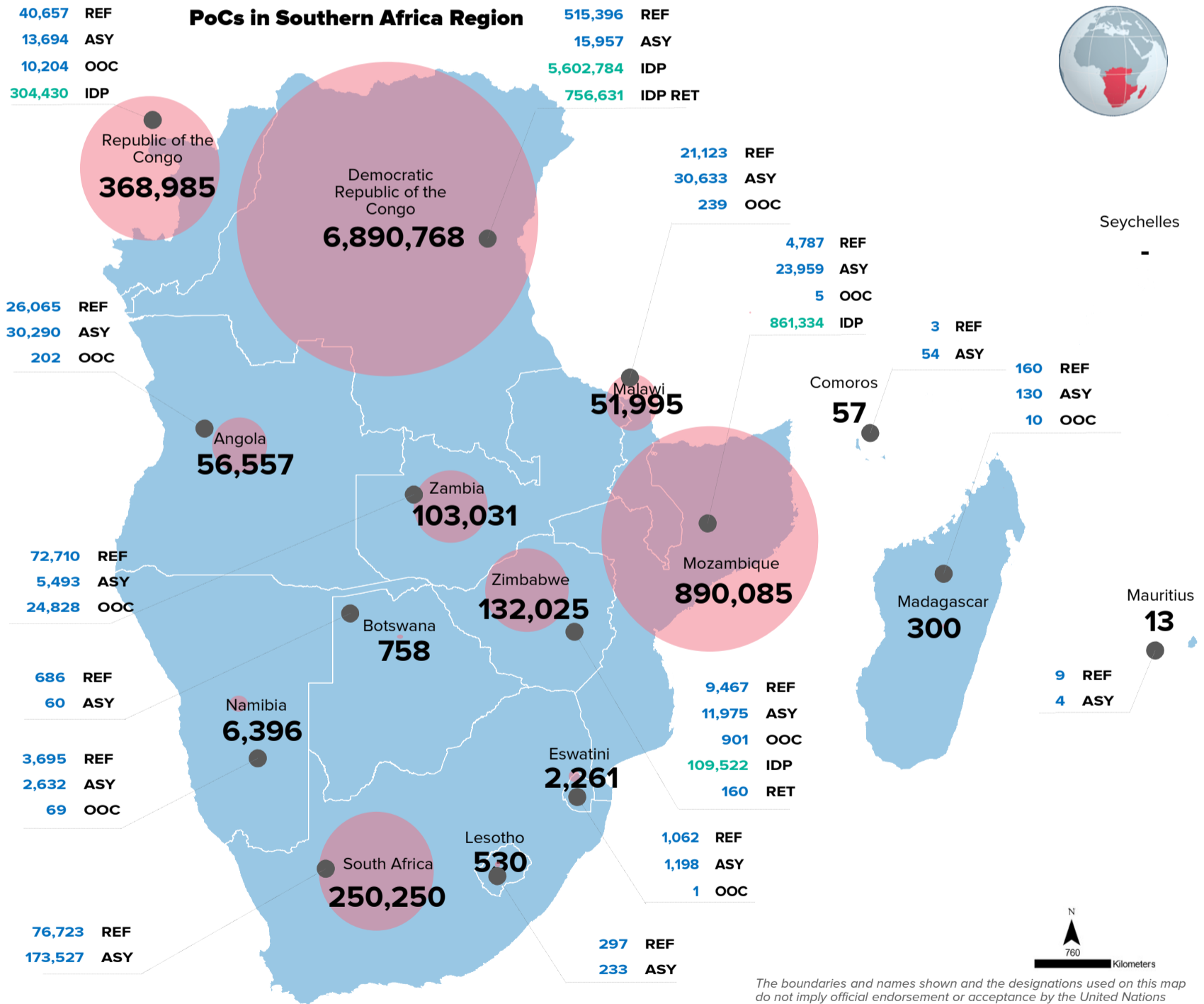
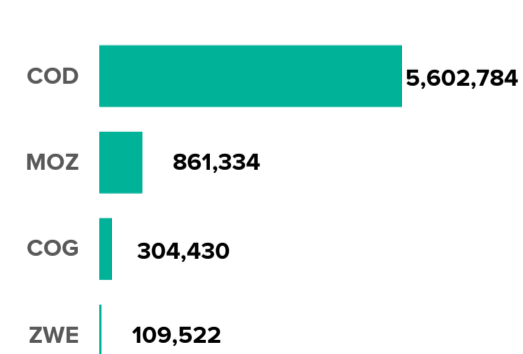
**COUNTRIES OF ORIGIN (TOP 5)**



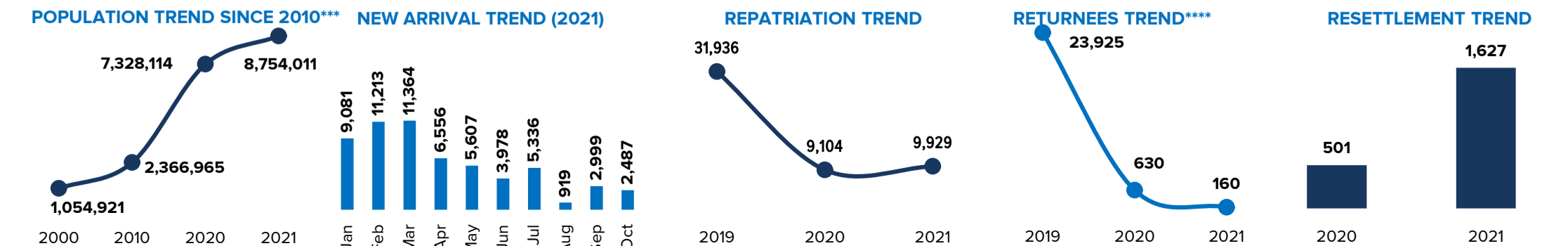
**COUNTRIES OF ASYLUM (TOP 5)**



**COUNTRIES WITH IDPS**



**TRENDS**



\* Includes dis-aggregation for South Africa with 63% males aged 18 – 59 which changes previous averages. Age cohort percentage has been around off to the whole number  
 \*\*REF=Refugees, ASY= Asylum-seekers, OOC= Others of concern, PSN=Person with specific needs, IDP= Internal Displace Persons, RET= Returnee  
 \*\*\*Figure without returnees  
 \*\*\*\*IDP Returnees figures not included  
 Data sources: Government, IOM, UNHCR  
 For more information or to contribute, UNHCR RBSA DIMA (rsarbdima@unhcr.org)