

Total Arrivals from Ethiopia



18,960

Individuals Registered
Source: UNHCR, COR
As of 30 November



11,596

Households

Introduction:

In support of the Government of Sudan's response to the ongoing influx of refugees from Ethiopia's Tigray region to eastern Sudan, UNHCR, partners, and other UN agencies set up a new refugee camp in Um Rakuba-Gedaref State. First group of refugees were relocated to this site on at the end of 2020 and individual biometric registration is ongoing. The dashboard below presents the population profile for Um Rakuba camp.

Persons With Specific Needs



558

Individuals



184

Unaccompanied/Separated Children

Country of Origin



18,930

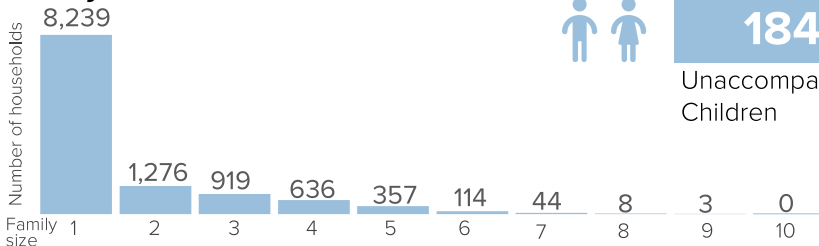
Ethiopians



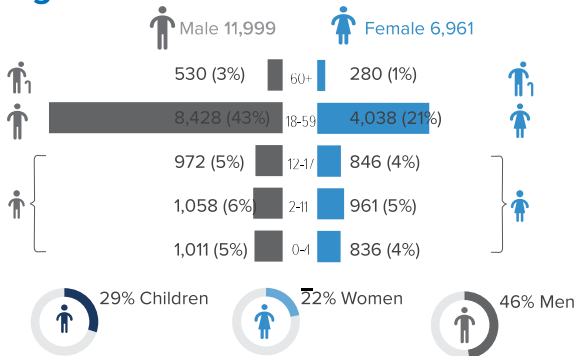
30

Eritreans

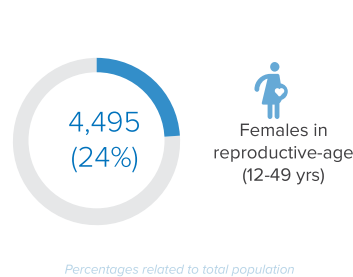
Family Size



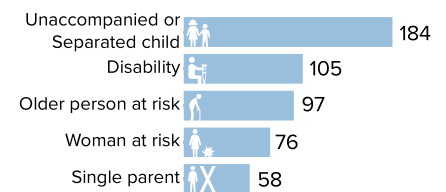
Age-Gender Breakdown



Reproductive-Age Women/Girls

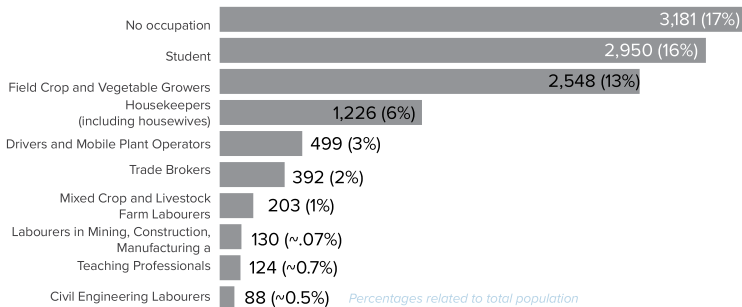


Specific Needs (top 5)



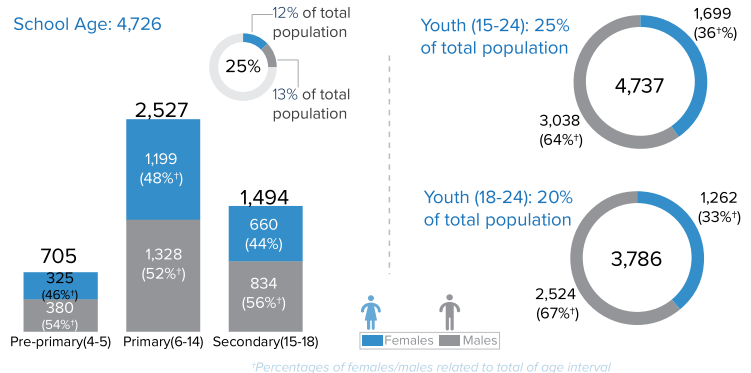
*Source: ProGres v4/Rapp

Occupation (Top 10)



*6,546 Individuals have unknown occupation Percentages related to total population

School Age Children and Youth



Ethnicity (Top 4)



Top 5 Regions of Origin (Ethiopia)



Total Arrivals from Ethiopia

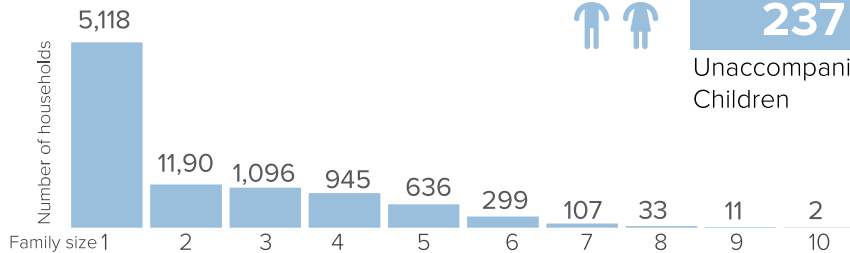

20,672

 Individuals Registered
 Source: UNHCR, COR
 As of 30 November 2021

9,437

 Relocated from Hamdayet
 **1,074**  **808**
 Individuals Households

Family Size



Introduction:

In support of the Government of Sudan's response to the ongoing influx of refugees from Ethiopia's Tigray region to eastern Sudan, UNHCR, partners, and other UN agencies set up a new refugee settlement in Tunaydbah-Gedaref State. First group of refugees were relocated to this site on January 3, 2021 and individual biometric registration is ongoing. The dashboard below presents the population profile for Tunaydbah settlement.

Persons with Specific Needs


1,177

Individuals


237

Unaccompanied/Separated Children

Country of Origin

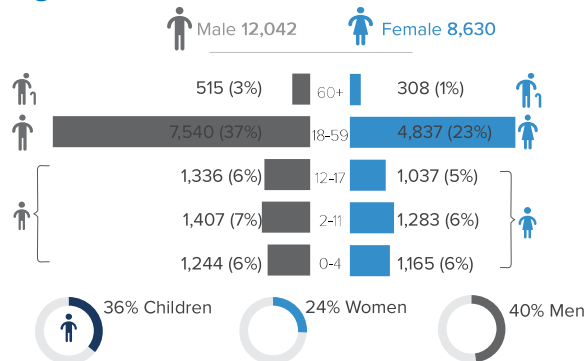

20,665

Ethiopians

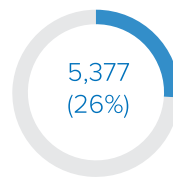

7

Eritreans

Age-Gender Breakdown



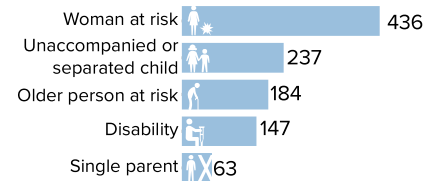
Reproductive-Age Women/Girls



Females in reproductive-age (12-49 yrs)

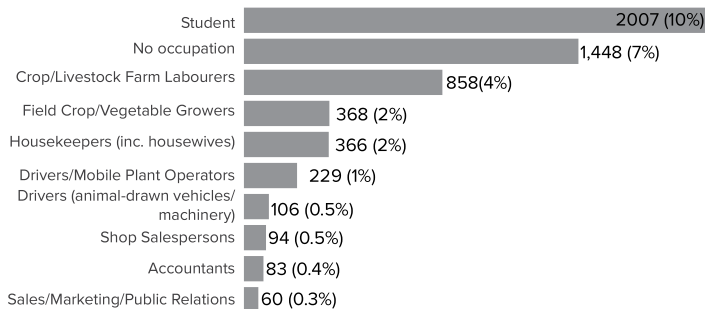
Percentages related to total population

Specific Needs* (top 5)



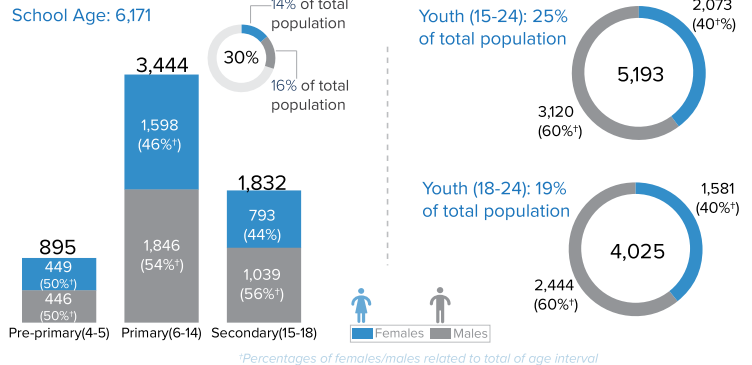
*Source: ProGres v4/Rapp

Occupation (Top 10)



*14,147 Individuals have unknown occupation Percentages related to total population

School Age Children and Youth



Ethnicity (Top 5)



Top 5 Regions of Origin (Ethiopia)

