



# Performance Snapshot

Quarter 3

## Uganda Refugee Response Plan (RRP) 2020-2021

January - September 2021



**8,345**  
Refugees & Asylum Seekers  
**1,898 HHs**

### Oruchinga Refugee Settlement Mbarara Sub-Office



**20**  
Partners

Sector	Actual status per key indicator	Target/Standard (21')	Actual against annual target or standard
Education	138% children of school going age enrolled in primary school (ERP Sep '21)	120%	
	The pupil teacher ratio for primary schools was 1:61 (ERP Sep '21)	1:59	
Environment & Energy	# households provided access to energy-saving equipment (NTR for Q3)	983 (target) 1/HH (standard) (incl. host comm.)	
	22.8 ha of woodlots established and maintained and restored (Q1-3)	317 ha (incl. host comm.)	
Food Security	7,357 refugees receiving food assistance through cash transfers	8,345 Individuals	
	55.8% of HH with poor or borderline Food Consumption Score (Q2 2021 data)	20% <20% (standard)	
Health & Nutrition	The severe Acute Malnutrition recovery rate was 100%	75% (target) > 75% (standard)	
	The under-five mortality rate was 0.00 per 1,000 children	0.1 (target) < 1.5 (standard)	
Livelihoods & Resilience	# households received emergency livelihood support (NTR for Q3)	430 HHs	
	2,729 refugees received financial literacy training (NTR for Q3)	7,000 Individuals	
Child Protection	2,320 children participating in community-based activities	1,705 Individuals	
	85 SGBV survivors received appropriate multi-sectoral support	150 Individuals	
Protection	1,100 refugees received psychosocial support	540 Individuals (Original 2020 target)	
	896 refugees received legal assistance and legal aid services (NTR for Q3)	4,500 Individuals (Original 2020 target)	
Shelter, Settlement & NFI	# of refugee households with specific needs assisted with semi-permanent shelter (NTR for Q3)	30 HHs	
	# of newly arrived refugee households provided with the minimum emergency shelter support (NTR for Q3)	51 HHs	
Water, Sanitation & Hygiene	21.5 litres per person per day	20 liters (target) 20 liters (standard)	
	84% household latrine coverage	85% (target) ≥ 85% (standard)	
Cash-Based Interventions	2,452 households received any forms of cash and voucher assistance (including unconditional cash grant) (NTR for Q3)	1,600 HHs	
	# of households receiving cash and voucher assistance for basic needs (multipurpose cash) (NTR for Q3)	0 HHs	



**03**  
National partners



**11**  
International NGOs



**04**  
UN Agencies



**02**  
Government Partners



Partner/ Sector	Education	E&E	Food Security	Health & Nutrition	Livelihood	Protection	CP	SGBV	SSNFI	WASH	CBI
Alight						IP	IP	IP			
FAO					A						
FRC					OP						
HIJRA						OP					
HFU		OP	OP	OP	OP						OP
IDLG	GP	GP		GP							
MindLeaps							OP				
MTI				IP							
NRC	OP					OP					
NSAMIZI		IP								IP	
OPM	GP					GP	GP	GP			
SCI							OP				
TPO						IP		IP			
UNICEF				A							
UNHCR	A	A		A		A	A	A	A	A	
URCS				OP							
UWESO	OP	OP									
WCH							OP				
WFP			A	A							A
WIU	IP										

A = United Nations Agency

GP = Government Partner

IP = Implementing Partner

OP = Operational Partner

Food and Agricultural Organisation of the

United Nations (FAO)

Finnish Refugee Council (FRC)

Humanitarian Initiative Just Relief Aid(HIJRA)

Hunger Fighters Uganda (HFU)

Isingiro District Local Government (IDLG)

Medical Teams International (MTI)

Norwegian Refugee Council (NRC)

Office of the Prime Minister (OPM)

Transcultural Psychosocial Organisation

(TPO)

United Nations Children Emergency Fund

(UNICEF)

United Nations Refugee Agency (UNHCR)

Uganda Redcross Society (URCS)

Uganda Women's Effort to Save Orphans

(UWESO)

War Child Holland (WCH)

World Food Programme (WFP)

Windle International Uganda (WIU)

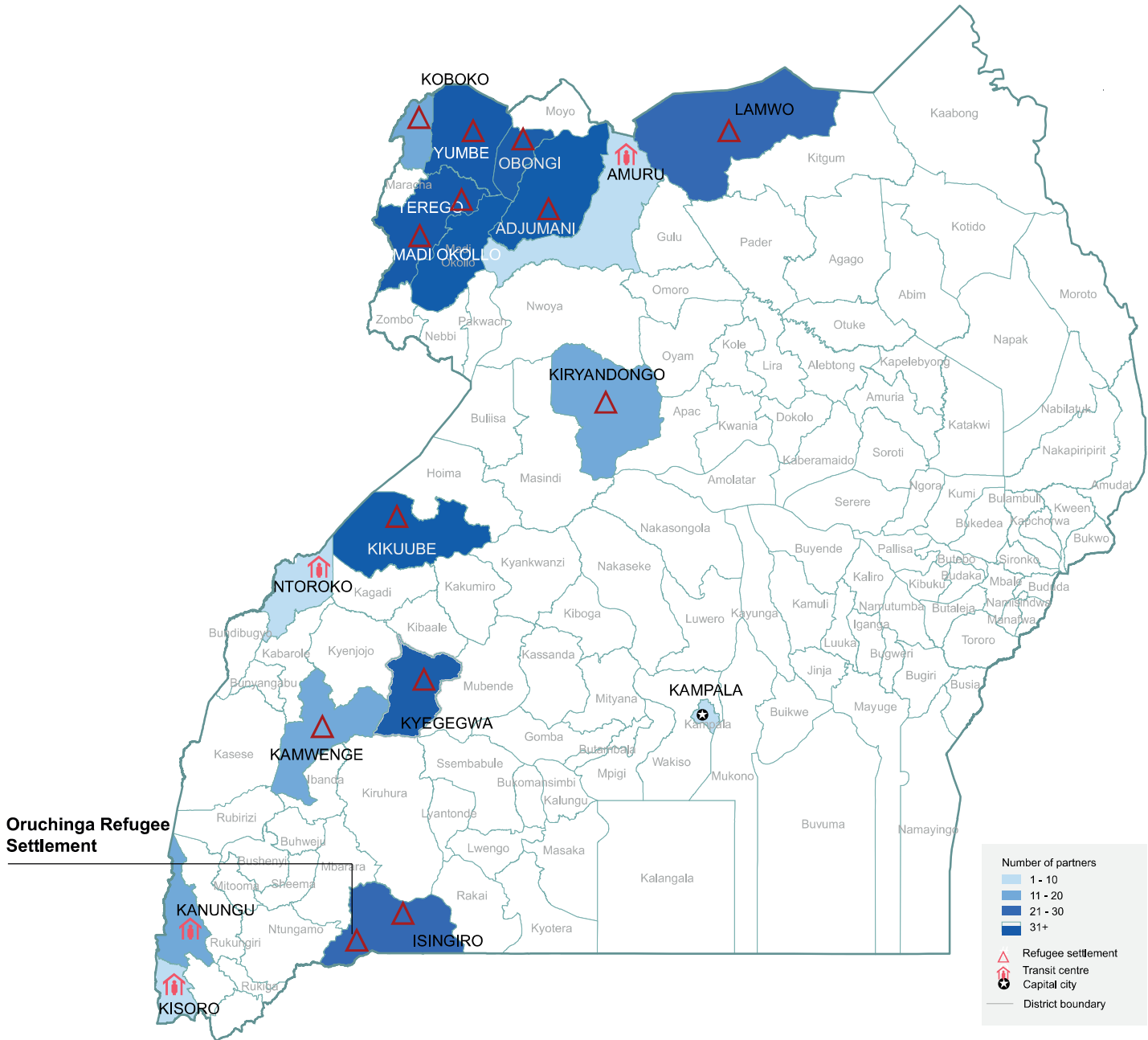


# Operational Presence

Quarter 3

## Map of Uganda Showing Location of Settlement

January - September 2021



The boundaries and names shown and the designations on this map do not imply official endorsement or acceptance by the United Nations