

Total Arrivals from Ethiopia



19,073

Individuals Registered
Source: UNHCR, COR
As of 1 January 2022



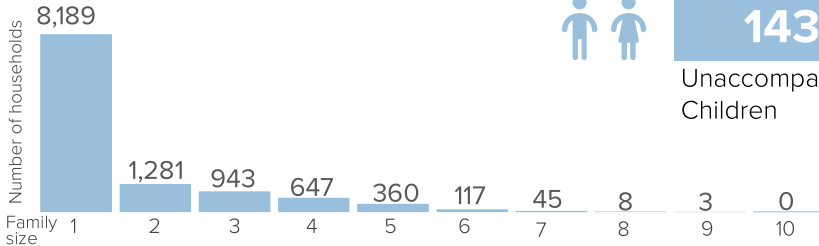
11,593

Households



Relocated from Hamdayet
128 Individuals

Family Size



Introduction:

In support of the Government of Sudan's response to the ongoing influx of refugees from Ethiopia's Tigray region to eastern Sudan, UNHCR, partners, and other UN agencies set up a new refugee camp in Um Rakuba-Gedaref State. First group of refugees were relocated to this site on at the end of 2020 and individual biometric registration is ongoing. The dashboard below presents the population profile for Um Rakuba camp.

Persons With Specific Needs



545

Individuals



143

Unaccompanied/Separated Children

Country of Origin



19,044

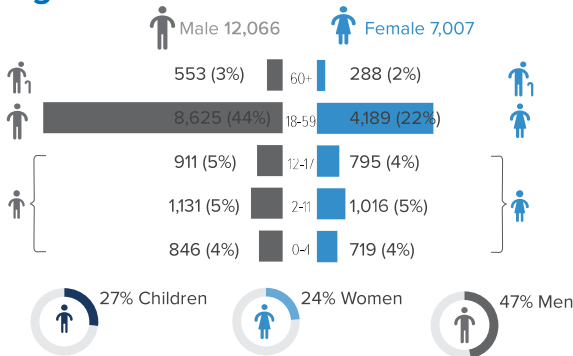
Ethiopians



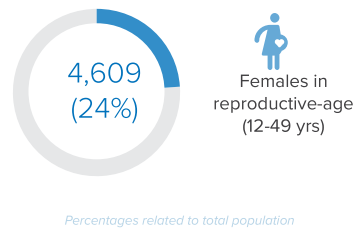
29

Eritreans

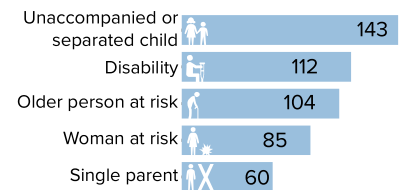
Age-Gender Breakdown



Reproductive-Age Women/Girls

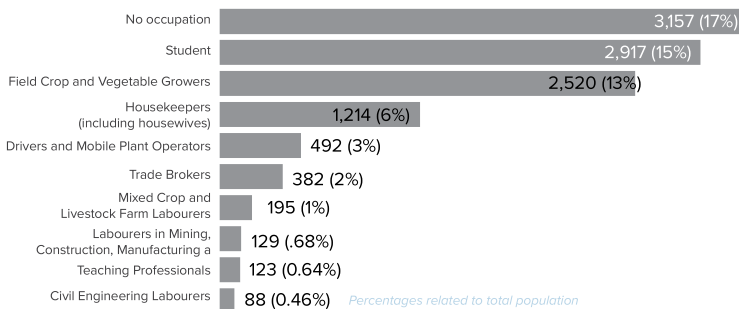


Specific Needs (top 5)



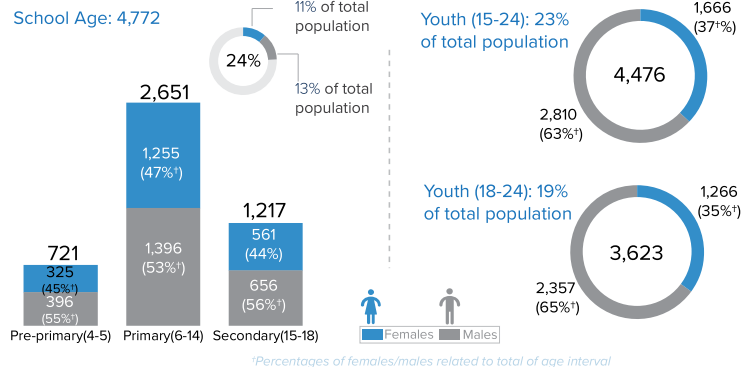
**Source: ProGres v4/Rapp*

Occupation (Top 10)



*6,589 Individuals have unknown occupation

School Age Children and Youth



Ethnicity (Top 4)



Top 5 Regions of Origin (Ethiopia)



Total Arrivals from Ethiopia


23,617

 Individuals Registered
 Source: UNHCR, COR
 As of 1 January 2022

11,258

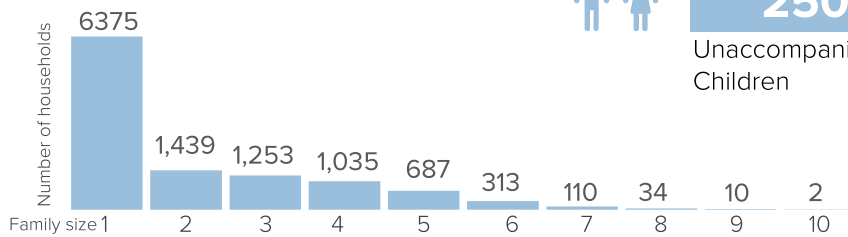
Households Registered



Relocated from Hamdayet

3,915 Individuals

Family Size



Introduction:

In support of the Government of Sudan's response to the ongoing influx of refugees from Ethiopia's Tigray region to eastern Sudan, UNHCR, partners, and other UN agencies set up a new refugee settlement in Tunaydbah-Gedaref State. First group of refugees were relocated to this site on last January 3, 2021 and individual biometric registration is ongoing. The dashboard below presents the population profile for Tunaydbah Camp.

Persons with Specific Needs


1,382

Individuals


250

Unaccompanied/Separated Children

Country of Origin

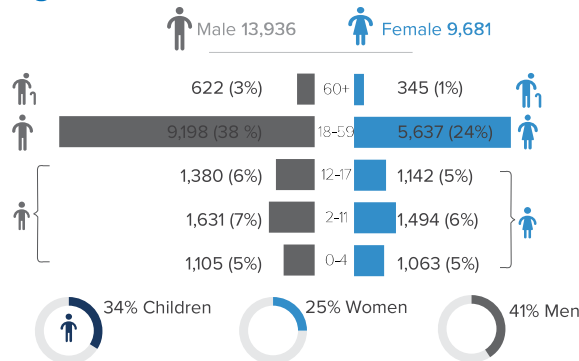

23,610

Ethiopians

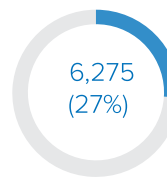

7

Eritreans

Age-Gender Breakdown



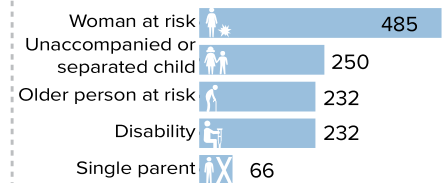
Reproductive-Age Women/Girls



Females in reproductive-age (12-49 yrs)

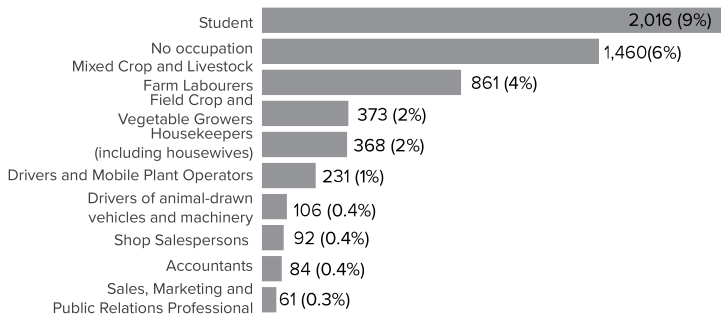
Percentages related to total population

Specific Needs* (top 5)



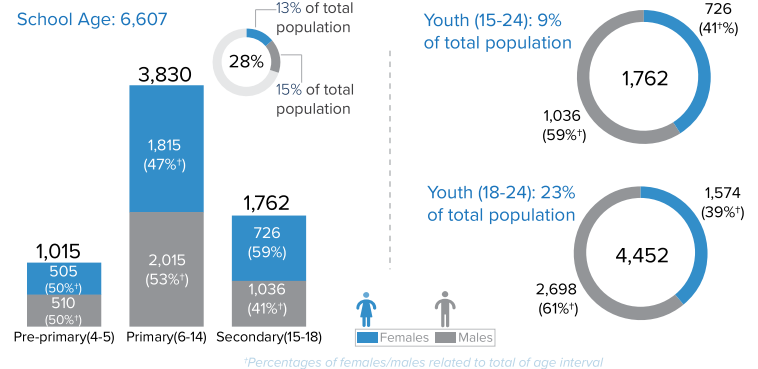
*Source: ProGres v4/Rapp

Occupation (Top 10)

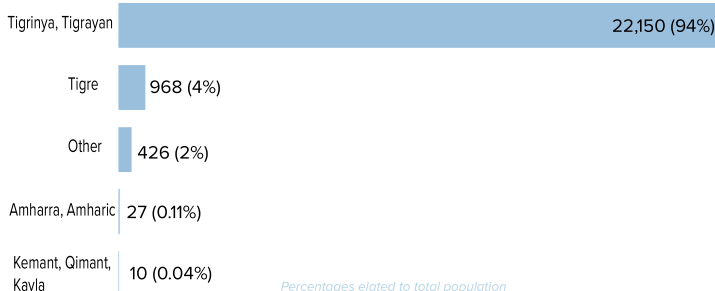


*17,098 Individuals have unknown occupation Percentages related to total population

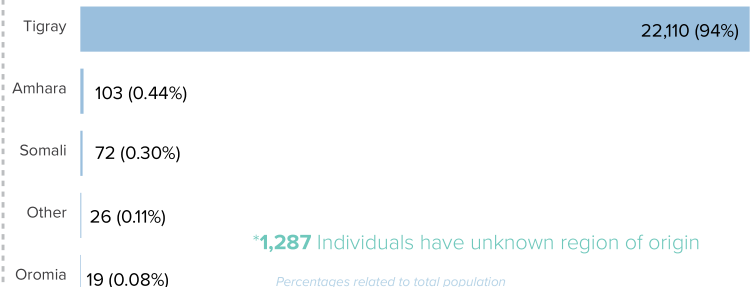
School Age Children and Youth



Ethnicity (Top 5)



Top 5 Regions of Origin (Ethiopia)



Total Arrivals from Ethiopia



2,144

Individuals Registered
Source: UNHCR, COR
As of 31 January 2021



946

Households

Introduction:

In support of the Government of Sudan's response to the ongoing influx of refugees from Ethiopia's Tigray region to eastern Sudan, UNHCR, partners, and other UN agencies set up a new refugee Settlement in Babikre-Gedaref State. First group of refugees were relocated to this site on at the end of 2021 and individual biometric registration is ongoing. The dashboard below presents the population profile for Babikre Settlement.

Persons With Specific Needs



74

Individuals



46

Unaccompanied/Separated Children

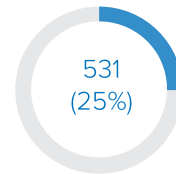
Country of Origin



2,144

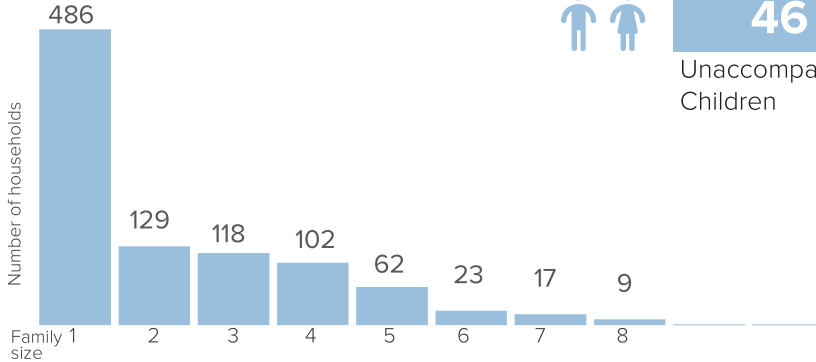
Ethiopians

Reproductive- Age Women/Girls

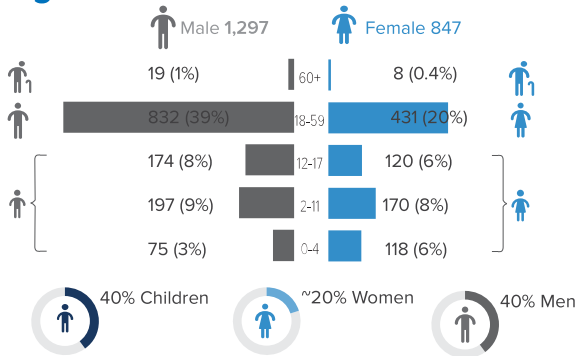


Females in reproductive-age (12-49 yrs)

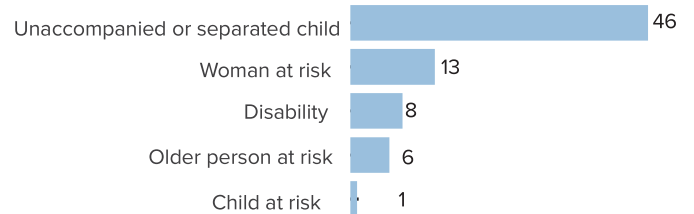
Family Size



Age-Gender Breakdown

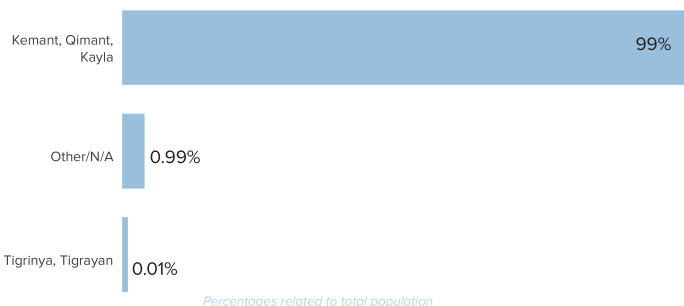


Specific Needs (top 5)



*Source: ProGres v4/Rapp

Ethnicity



School Age Children and Youth

