

Nature-based solutions for displacement landscapes in East Africa

Mary Njenga: m.njenga@cgiar.org

Cathy Watson: c.watson@cgiar.org

Ruth Mendum: rmm22@psu.edu

Solomie Gebrezgabher: s.gebrezgabher@cgiar.org

Phosiso Sola: p.sola@cgiar.org

Jolien Schure: J.Schure@cgiar.org

Economic Inclusion Exchange East Africa: 31st March 2022



CIFOR-ICRAF: Who we are

Regional priorities

Vision, mission and values



Vision – an equitable world in which viable livelihoods in resilient landscapes foster well-being for people, trees and the environment



Mission – to harness the power of science and innovation to improve the benefits that forests, trees, soils and their sustainable management can provide to all of humankind, for a more resilient, equitable and prosperous future



Values

- » Working with nature
- » Commitment to research for impact
- » Integrity and professionalism
- » Respect, partnership and collaboration
- » Innovation
- » Efficiency and effectiveness



The five challenges

CIFOR-ICRAF provides actionable, game-changing solutions to five major global challenges:

- » Deforestation and biodiversity loss
- » A climate in crisis
- » Transforming food systems
- » Unsustainable supply and value chains
- » Extreme inequality



Transformative Partnership Platforms – alliances focused on critically important challenges

Engagement Landscapes – geographic locations where we carry out concentrated, long-term transformative work with diverse and committed partners



Flagship Products – initiatives that provide action-oriented insights into key global issues

Partnerships at a glance

More than
2,200
projects completed

More than
90
countries

Currently active in more than
60
countries

More than
190
active partnerships

USD 1.8 billion invested in research

700 staff

10-year collaboration with FTA partners

Research Themes

- Trees and forest genetic resources and biodiversity
- Livelihood systems
- Sustainable value chains and investments
- Governance, gender, justice, and wellbeing
- Climate change, energy and low carbon development



<https://worldagroforestry.org/> <https://www.cifor.org/>

CIFOR-ICRAF Refugee Hosting Engagement Landscape

- Sub-Saharan Africa hosts >26% of global refugee population, 6.3 million refugees a growth of 186% in a decade from 2.2 million (UNHCR, 2020, Africa). Population is disproportionately women and children
- Characterized by high diversity in cultural background with some settlements having people from about 10 nationalities.

Aim to carry out concentrated, long-term transformative work with diverse partner organizations



The five challenges

CIFOR-ICRAF provides actionable, game-changing solutions to five major global challenges:

- » Deforestation and biodiversity loss
- » A climate in crisis
- » Transforming food systems
- » Unsustainable supply and value chains
- » Extreme inequality

Refugee-host community conflict over resources is real

Contact: m.njenga@cgiar.org
a.Awono@cgiar.org



Areas of focus

- Restoration of current and closed settlements
- Resilient livelihoods: natural resource, tree, agriculture, agroecology, circular economy based
- Energy and climate change
- Governance of multifunctional landscape
- Gender and inclusion
- **Projects:** 11 projects since 2018
- **Partnerships:** 52 partners- UN bodies, funders, CGIAR, NGO's, local government and universities. Member of national and global platforms and networks
- **Team** of over 15 scientists



Resource recovery and reuse (RRR) in refugee context in Africa

- Piloting and scaling up locally viable and **gender-responsive circular economy-based** solutions developed by CGIAR for increased food and energy security and sustainable socio-ecological systems in refugee settlements and host communities
- Implemented in six refugee settlements and their host communities in Ethiopia, Kenya and Uganda

Focusing on:

- Recovering water, nutrients and biochar for home gardening and agroforestry and recovering energy using gender-responsive solutions
- Knowledge dissemination and capacity development for 3600 people
- Piloting
- Scaling to 200,000 people



Contact:

Solomie: s.gebrezgabher@cgiar.org

Mary: m.njenga@cgiar.org

Ruth: rmm22@psu.edu

Project website:

<https://worldagroforestry.org/project/gender-responsive-innovations-soil-rehabilitation-alternative-fuel-and-agriculture> : <http://rrr-refugee.iwmi.org/>

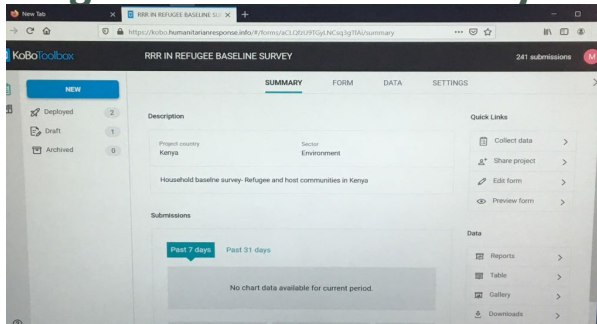
Podcast:

<https://forestsnews.cifor.org/66077/why-the-energy-and-food-nexus-is-critical-in-refugee-context?fnl=en>

Name of organization	Role of partner
Coordination and technical advice	
International Water Management Institute (IWMI)	Project leader Developing adaptable RRR business models
World Agroforestry (ICRAF)	Project co-leader: Developing energy and agroforestry solutions
International Center for Tropical Agriculture (CIAT)	Improving soil fertility and land conservation
Capacity development and pilot implementation	
Adventist Development and Relief Agency (ADRA), Ethiopia	Capacity development and piloting in Ethiopia
Danish Refugee Council (DRC), Kenya and Uganda	Capacity development and piloting in Kenya and Uganda
Technical backstopping	
Office of International Programs, (Ag Sciences Global) College of Agricultural Sciences, Penn State University (PSU)	Gender integration
Department of Soil and Water Resources Management, Wollo University, Ethiopia	Coordinate project activities in Ethiopia and nutrition characterizing of crops
Dr. Andrew Adam-Bradford, Urban agriculture expert	Backstopping capacity building in home gardening
Upscaling and stakeholder dialogue	
International humanitarian aid and donor community (United Nations High Commission for Refugees [UNHCR], UN-Habitat)	Adoption of project outcomes for further outreach

RRR innovations in refugee context in Africa

Digital R&D context analysis



Kobo ToolBox: Digital questionnaire in phones. 600 households 7:3 refugee:host



Joint community consultations

Virtual co-learning training of trainers (ToT) for Ethiopia team

Home Gardening, Agroforestry and Energy through Resource Recovery and Reuse (RRR) in Refugee Context in East Africa



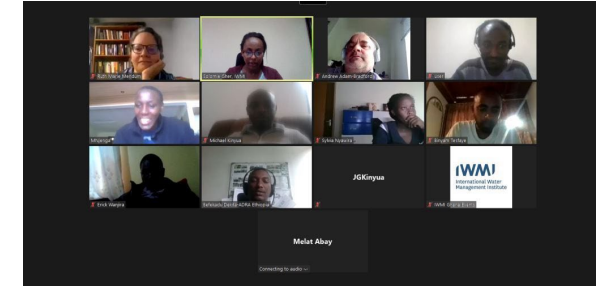
Authors: Adam Bradford A, Woldeatsadik D, Gitau JK, Wanjira EO, Nyawira S, Kinyua M, Mendum R, Gebrezgabher S, Topa NM, Njenga M

Cover infographic: Restock biomass, refugees design their plots with trees. Illustration by L. Duguma, C. Okia and C. Watson.

Co-development of a training manual

September 2021

To be published after incorporation of field experiences



Home gardening, agroforestry, energy and business skills

- Training of trainers
- Peer to peer community trainings by ToT
- **Kenya:** 750 people Refugee: 650 (540F:110M), Host Community: 100 (91F:9M)
- **Uganda:** 660 people Refugee 517 (324 F:193M) Host 154(67F:76M)

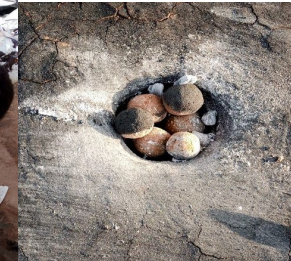


Sourcing tree seedlings from the Resource Centre in Rhino, Uganda.



Mulching trees seedlings

Crops being sold by farmers: Vegetables (Amaranth, kale, jute mallow spinach), fruit crops (Okra, pumpkin),



Cooking with briquettes



Tree prunings/branches for firewood, Ngurua, Uganda

Contact Kenya: harriet.holder@drc.ngo

Contact Uganda: patrick.phillips@drc.ngo

Response to Increased Environmental Degradation & Promotion of Alternative Energy Sources in Refugee Hosting Districts of Uganda (RED), project

Objectives

Increase environmental protection, forest restoration and improve sustainable energy and alternative livelihoods by displaced populations and their host communities in the refugee hosting districts

Improved access to sufficient, healthier, sustainable and alternative sources of energy, increased capacity to construct and maintain these, decreased dependence on energy from unsustainable and unregulated sources for households and causes of conflicts between refugees and host communities are addressed

Energy, environment and climate action programming, coordination and capacity is strengthened at various scales

Outputs

- *Local government has improved long-term capacity to design & implement gender responsive environment programming focused on empowering girls and women*
- *Increased Participation of Women in Coordination mechanisms/structures at local government and community level*

Beneficiaries

Direct 234,800 and 2,128,500 indirect

Adolescents, youth and women, female-headed households including young mothers, persons with disabilities; local government (LG) employees, civil society organizations (CSOs) private sector companies.

Benefits: Income generating activities, appropriate efficient energy technologies and **action planning and programming**

Partners: Save the Children (SC)| Enabel| Joint Energy and Environment Projects (JEEP)| Vision for Humanity (ViFoH)

Funders: EU and USDA-NIFA (Penn State University of gender integration)
Period: Jan 2021-Dec2024

Project website:

<https://worldagroforestry.org/project/response-increased-environmental-degradation-and-promotion-alternative-energy-sources>



Women's energy burden

Gender integration Strategy: approaches for research and development in African settings



Led by Ruth Mendum, Ag Sciences Global, Penn State University

Email: rmm22@psu.edu



Exploring the frontiers of the global food system.



Guidelines for a Landscape Approach in Displacement Settings

Review of landscape approaches in displacement settings and available tools

Fieldwork in landscapes of

1. Garoua Boulai, East Cameroon,
2. Kakuma Refugee Camp and Kalobeyei integrated settlement, Turkana Kenya,
3. Rhino Camp Refugee Settlement, Madi-Okollo and Terego Districts, Uganda



Consultations with global, national and site-level stakeholders.

Develop guidelines and webtool for easy access to guidelines, publications and tools.



GML
GOVERNING MULTIFUNCTIONAL LANDSCAPES



CIFOR



World
Agroforestry



CGIAR

Contact: Jolien Schure: J.Schure@cgiar.org

Phosiso Sola: p.sola@cgiar.org

RCH
IAM ON
sts, Trees and
forestry



Draft framework landscape approach in displacement settings

Multifunctionality and trade offs

- Ecological, social and economic functions to refugees and communities
 - Natural resources near refugee settlement
 - Interactions between refugees and communities
- Planning, management and national policies targeting trade-offs



Participation and engagement

- Equitable access for refugees and hosting communities
Participation in planning and monitoring
Understanding perceptions of targeted population
Capacity enhancement for effective participation
Engaging private sector

Multifunctionality and trade offs

Complexity of social-ecological systems

Interdisciplinarity and transdisciplinary

Participation and engagement

Sustainability

Complexity -of social-ecological systems

- Range of different processes
Different scales
Hybrid nature of humanitarian governance

Interdisciplinarity and transdisciplinary

- Multiple interlinking sectors
- Engaging stakeholders within and outside landscape
- Approaches that transcend disciplines (e.g. multi-sector approach, mixed methodology, system approach).

Sustainability

- **Social sustainability**
- Access to services
- Livelihood opportunities
- Social cohesion and mitigating conflict
- **Environmental sustainability**
- Sustainable site selection
- Mitigating and reducing degradation in refugee hosting landscapes
- Restore multiple functions
- Sustainable management practices
- Monitoring land use and land cover change
- **Economic sustainability**
- Access to income generating activities from diversified livelihood activities or employment markets.
- Equitable access to markets and capital.

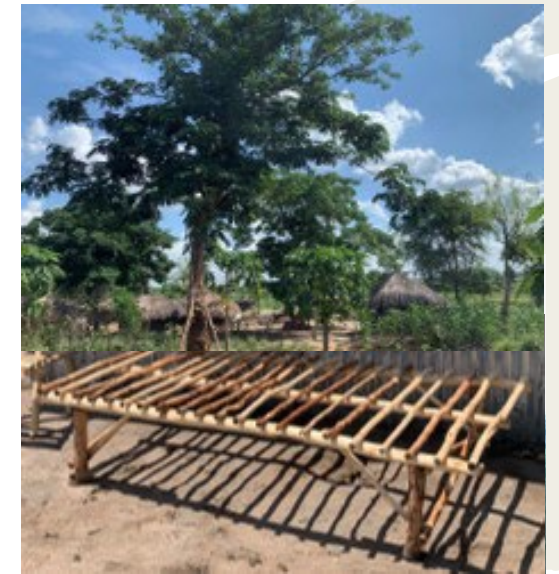


Resource Centre in Uganda and co-benefits

- Set up in 2018
- 120,000 seedlings a year
- Trainings
- Foresters, Community facilitators
- Tree seed collection

Results – Shade, fruit, poles, furniture, woodfuel, woodlots, improved soil, protection from wind, incomes, jobs, resilience, well-being, biodiversity

Contact: C.Watson@cgiar.org



Knowledge resources

Projects websites

- Resource Recovery and reuse for food, energy and environment Ethiopia, Kenya and Uganda: <https://worldagroforestry.org/project/gender-responsive-innovations-soil-rehabilitation-alternative-fuel-and-agriculture>: <https://rrr-refugee.iwmi.org/>
- Gender responsive energy and climate action to address degradation in refugee hosting districts, Uganda: <https://worldagroforestry.org/project/response-increased-environmental-degradation-and-promotion-alternative-energy-sources>
- Governing multifunctional landscapes (GML)-guidelines for landscape approach in displacement settings (GLADS): [Guidelines for a Landscape Approach in Displacement Settings - Governing Multifunctional Landscapes \(cifor.org\)](#): [Home - Governing Multifunctional Landscapes \(cifor.org\)](#)

Blogs

- Agroforestry with refugees Uganda: <https://www.globalgiving.org/projects/agroforestry-with-refugees-and-hosts-in-nw-uganda/reports/>
 - Food and energy nexus and [gender-inclusive approach](#) <https://forestsnews.cifor.org/66077/why-the-energy-and-food-nexus-is-critical-in-refugee-context?fnl=en>
 - Resilient landscapes and livelihoods in refugee settings: <https://forestsnews.cifor.org/73009/how-to-build-resilient-landscapes-and-livelihoods-in-refugee-settings?fnl=>

Working papers and book chapters

- State of biomass resources in refugee-hosting landscapes: the case of Rhino Camp and Imvepi Refugee Settlements in West Nile, Uganda. Working Paper No. 297. World Agroforestry, Nairobi. <http://dx.doi.org/10.5716/WP19031.PDF>
- Restocking woody biomass to reduce social and environmental pressures in refugee-hosting landscapes: Perspectives from Northwest Uganda. Working Paper No. 298. <http://dx.doi.org/10.5716/WP19032.PDF>
- Resource recovery for briquettes and empowerment of women in humanitarian conditions in Kenya. In IRENA Sustainable Rural Bioenergy Solutions in Sub-Saharan Africa: A Collection of Good Practices, International Renewable Energy Agency, Abu Dhabi Sustainable Rural Bioenergy Solutions in Sub-Saharan Africa: A collection of good practices. Pp 73-75. https://www.irena.org/-/media/Files/IRENA/Agency/Publication/2018/Dec/IRENA_Sustainable_rural_bioenergy_SA_2018.pdf

Planned publication for your contributions

- A copy of the book's concept note is viewable here: <https://bit.ly/30I9yZO>
- For any further questions, please contact Isabela Vera at isabelajvera@gmail.com.

Call for abstracts

Urban/Peri-Urban Agriculture and Forced Displacement

Planned for the Springer Urban
Agriculture Book Series

Edited by Andrew Adam-Bradford, René van Veenhuizen, Isabela Vera, Mary Njenga, and Joe Nasr

Contacts at CIFOR-ICRAF on R&D in refugee context

CIFOR-ICRAF team at headquarter,
Nairobi

Mary Njenga: M.Njenga@cgiar.org

Cathy Watson: C.Watson@cgiar.org

Phosiso Sola: P.Sola@cgiar.org

Jolien Schure: J.Schure@cgiar.org

Lalisa Duguma: l.duguma@cgiar.org

Ljubica Butkovic: L.Butkovic@cgiar.org

Peter Gilruth: P.Gilruth@cgiar.org

CIFOR-ICRAF Kenya

Catherine Muthuri: C.Muthuri@cgiar.org

CIFOR-ICRAF Uganda

Erik Acanakwo: E.Acanakwo@cgiar.org

Prossy Kyomuhendo: P.Kyomuhendo@cgiar.org

CIFOR-ICRAF Rwanda

Athanase Mukuralinda: A.Mukuralinda@cgiar.org

CIFOR-ICRAF Ethiopia

Kiros Hadgu: K.Hadgu@cgiar.org

Niguse Hagazi: N.Hagazi@cgiar.org

CIFOR-ICRAF Tanzania

Anthony Kimaro: A.Kimaro@cgiar.org

Democratic Republic of Congo (DRC)

Paolo Cerutti: p.cerutti@cgiar.org

CIFOR-ICRAF Central and West Africa

Ann Degrande: A.Degrande@cgiar.org

Abdon Awono A.Awono@cgiar.org



Thank you

