

# How to support Gender-Based Violence (GBV) survivors as non-GBV actors

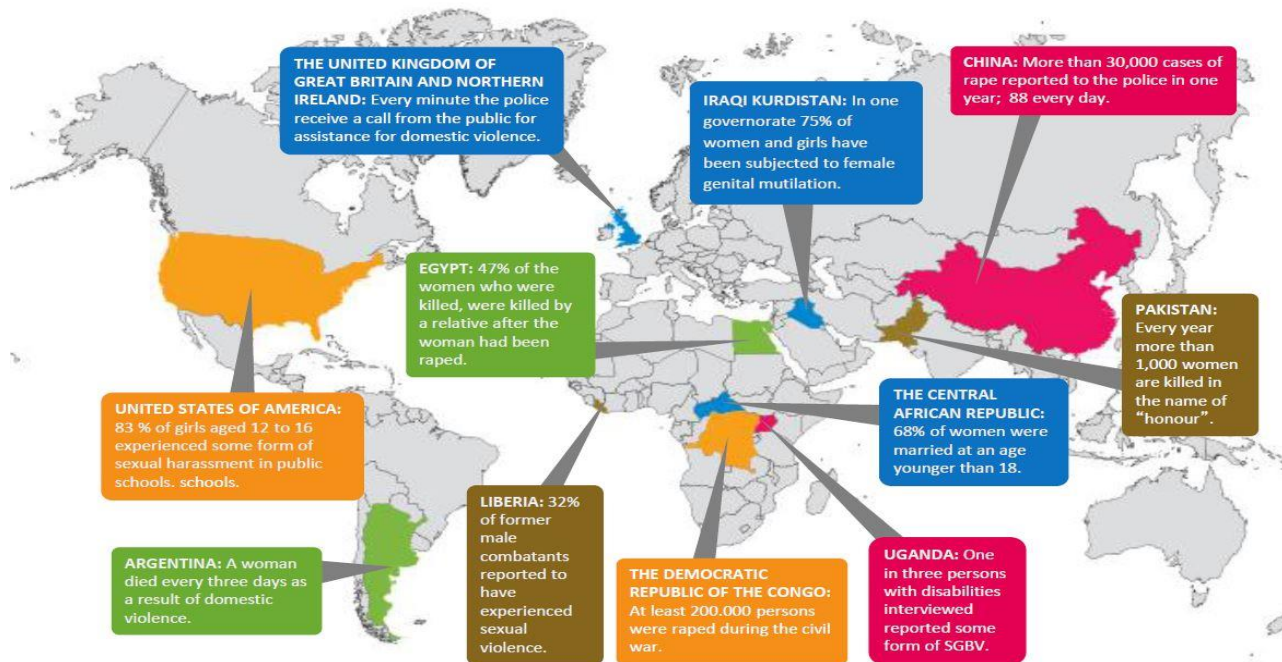
Protection Working Group - Hungary

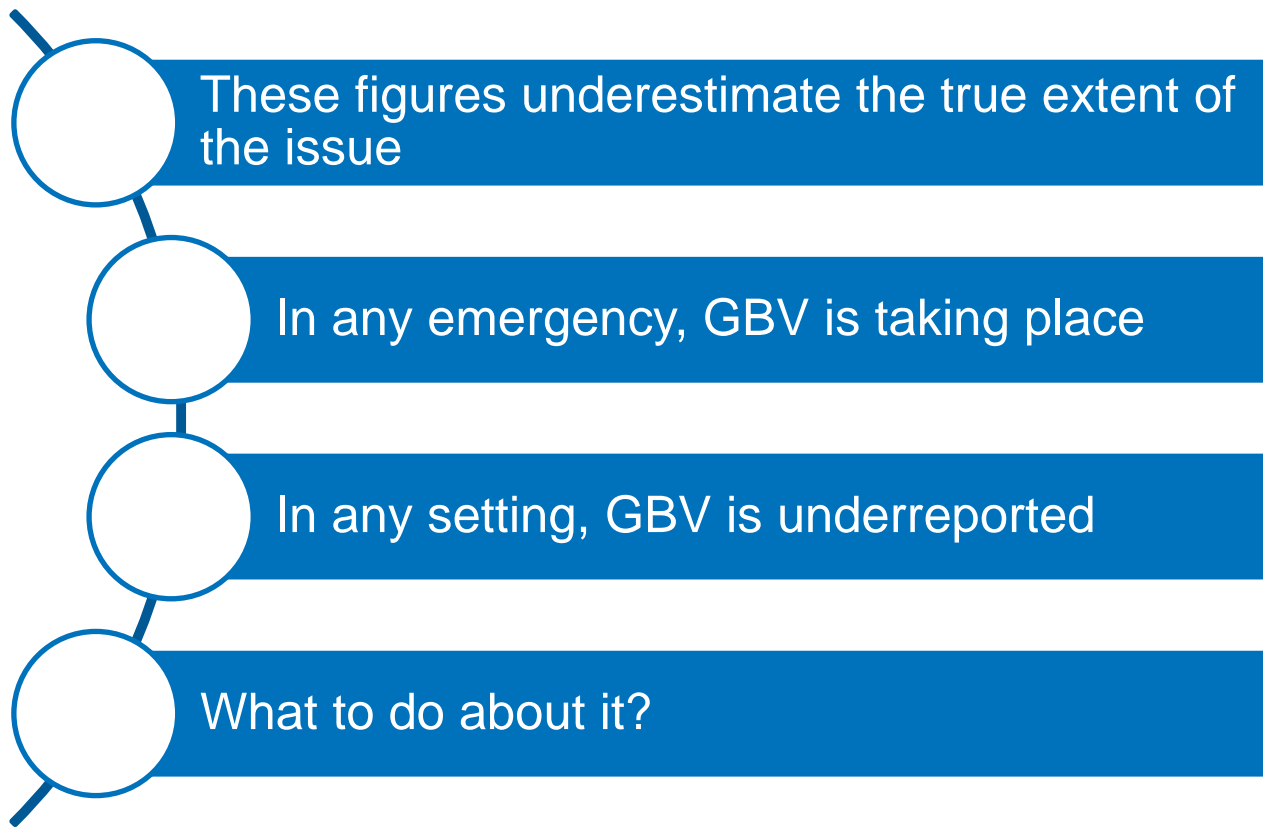
# Learning objectives

- Understand why GBV is a global emergency and priority
- Understand basic GBV concepts and specialized GBV in emergencies programming
- Determine how to safely handle disclosure of GBV incidents if you are a not a GBV specialist or trained protection workforce.
- Understand how to engage with and referring a 'survivor' as non-GBV workforce, using PFA and the *Do's and Don'ts* outlined in the GBV Pocket Guide.

# How big an issue GBV is around the world?

## Global Facts and Figures on SGBV





# PART I: GBV BASICS

- Core concepts related to Gender and GBV
- Guiding Principles for GBV work in your role



# Basic Concepts in understanding what is GBV

GBV is a human rights violation linked to:



**POWER**



**Power « over »**



**Abuse of Power**

**CONSENT** informed consent means making an informed choice freely and voluntarily by persons in an equal power relationship

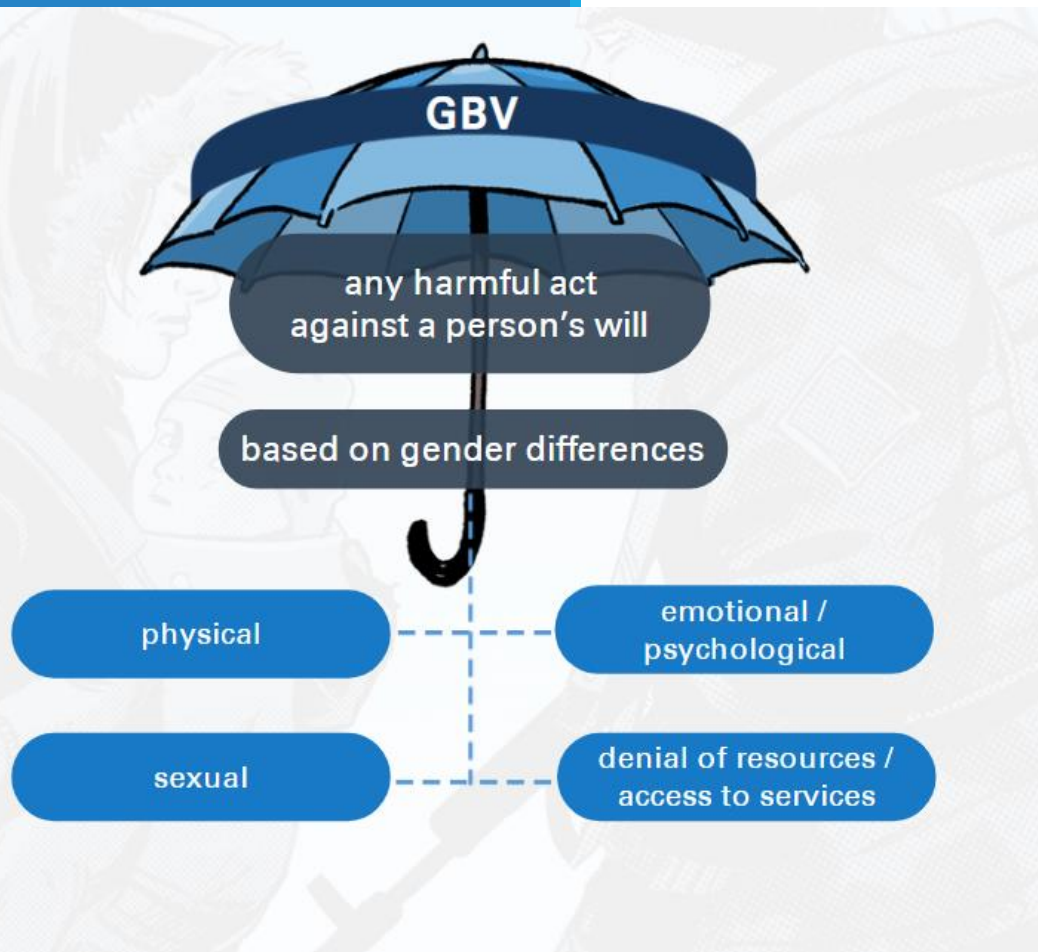
# Gender-Based Violence (GBV) Basic Concepts – Sex or Gender?

Refers to the **biological and physical characteristics** that define men and women. This includes reproductive systems (women have breasts and internal reproductive organs capable of gestating children, men have external reproductive organs, etc.).

Refers to the **social differences** between males and females that are learned. Though deeply rooted in every culture, social differences are changeable over time, and have wide variations both within and between cultures. “Gender” determines the roles, responsibilities, opportunities, privileges, expectations, and limitations for males and for females in any culture







---

**GENDER-BASED VIOLENCE** is an umbrella term for any harmful act that is perpetrated against a person's will, and that is based on socially ascribed (gender) differences between males and females.

***IASC (Inter-Agency Standing Committee) definition***

---

The term *gender-based violence* highlights the gender dimension of these types of acts; or in other words, the relationship between females' subordinate status in society and their increased vulnerability to violence.

---

GBV can be **SEXUAL, PHYSICAL, PSYCHOLOGICAL,** and **ECONOMIC**, and includes acts, attempted or threatened, committed with force, manipulation, or coercion and without the informed consent of the survivor.

---

A **SURVIVOR** is a person who has experienced GBV

# GBV Basic Concepts – Types of GBV?

GBV is not limited to rape, sexual violence or physical Intimate Partner Violence (IPV).

- Physical
- Sexual
- Emotional / psychological
- Socio-economic

# Consequences of GBV

| Physical health consequences | Psychological health consequences | Social & Economic consequences          |
|------------------------------|-----------------------------------|---|
| Physical injury              | Depression                        | Victim-blaming                          |
| HIV/AIDS                     | Fear                              | Stigmatisation                          |
| STIs                         | Self-blame                        | Rejection                               |
| Unwanted pregnancy           | Anxiety                           | Isolation                               |
| Unsafe abortion              | Mental illness                    | Decreased earning capacity/contribution |
| Fistula                      | Suicidal thoughts/actions         | Increased poverty                       |
| Death                        |                                   | Risk of re-victimization                |

# GBV Basic Concepts – GBV in Emergencies

- Conflict and displacement exacerbate pre-existing violence and present new forms of GBV (e.g. trafficking for sex, and sexual exploitation and abuse)
- 1 in 5 women who are refugees or displaced experience sexual violence globally.
- Most at-risk groups



# PART II: SUPPORTING GBV SURVIVORS AS NON-GBV ACTORS

- How to respond to GBV disclosures
- How to seek informed consent for referrals
- How to refer to further services



# Gender-Based Violence (GBV) programming – Guiding Principles (1<sup>st</sup> Minimum Standard)

- **Safety:** The safety of the survivor is the number one priority.
- **Confidentiality:** People have the right to choose to whom they will or will not tell their story.
- **Respect:** All actions you take are guided by respect for the survivor's choices, wishes, rights and dignity.
- **Non-discrimination:** Provide equal and fair treatment.

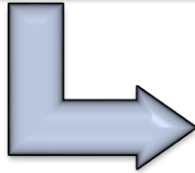
If health services exist, always provide information on what is available.

Protect the identity and safety of a survivor.

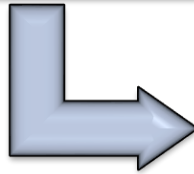
# Safe and confidential referral Decision Tree



A GBV incident is disclosed to you...



Is a GBV actor / referral pathway available?



Does the survivor choose to be linked to a service?



# What is a referral ?

- The process by which a survivor gets in touch with professionals and/or institution regarding her/his case
- The process by which different professional sectors communicate and work together, in a safe, ethical and confidential manner, to provide the survivor with comprehensive support



## Prepare



## Look



## Listen



## Link



## Resource: GBV Pocket Guide



# Prepare, Look, Listen, Link

- Be prepared and ask for the latest referral pathways. Talk GBV staff first
- Be aware of any other available services in your area.
- Remember your role.
- Do not proactively identify or seek out GBV survivors.
- Focus on the needs and choices of the survivor.
- Maintain confidentiality (risks v. benefits)

# Referrals: key messages



- Your primary role is **to provide the survivor information of available services including GBV focal point**. You do not need to refer the survivor to the GBV focal point or services.
- **Listen to the survivor** and use healing statements
- Take **urgent action if needed**, for example if the survivor is not safe or requires urgent medical attention
- You will refer the survivor to the GBV focal point or other services only if she/he request you to do so.
  - Use contact details provided in the referral pathway to conduct referral
  - If requested by the survivor, do physically accompany him/her to the service point
- Let the survivor know that help can also be sought at a later stage.

## IMMEDIATE RESPONSE

### Case Management & Psychosocial Support

#### NANE Association

📍 Budapest and countrywide

Case management, MHPSS (phone or in-person case counseling, crisis intervention)

Languages: Hun, Eng (available upon request: Ukr, Ru)

Survivors Helpline (anonymous, Mon-Tue-Thu-Fri 6pm-10pm; Wed 12pm-2pm):

+36 80 505 101 (free within Hungary, from abroad: +361 267 4900)

NANE Chat (On Wed 4-6 pm): <https://nane.hu/erintetteknek/chat-segely/>

For organizations referring cases: [vaw\\_support@nane.hu](mailto:vaw_support@nane.hu)

Urgent cases only: +36 30 28 44 389

Contact name and number: Enikő Szabó, +36 30 28 44 389

[info@nane.hu](mailto:info@nane.hu), [segelylevel@nane.hu](https://nane.hu/erintetteknek/chat-segely/)

#### PATENT Association

📍 Budapest and countrywide

Case management, access to SRH services, MHPSS, Interpretation, referral to access Clinical Management of Rape, Legal Aid

Languages: Hun, Eng (available upon request: Ukr, Ru)

Helplines: (Wed 4pm-6pm and Thu 10am-12pm)

+36 80 80 80 81 (free within Hungary)

+36 21 20 22 083 (from abroad, not free)

Help.women.ukraine@gmail.com, [info@patent.org.hu](mailto:info@patent.org.hu)

[info@emmaegyesulet.hu](mailto:info@emmaegyesulet.hu)

via Messenger <https://www.facebook.com/patent.egyesulet.ngo>

Contacts: Agnes Szaloki (PATENT) [szalokiagnes@gmail.com](mailto:szalokiagnes@gmail.com)

### Psychosocial Support

#### Hungarian Red Cross

📍 Záhony Railway Station

MHPSS

Katalin Oxer, PSS Focal Point, +36 20 335 30 12

[katalin.oxer@redcross.hu](mailto:katalin.oxer@redcross.hu)

#### Kék Vonal (Blue Line)

📍 Countrywide

Psychological counseling for children and young people

Helpline (1-9pm): 116 111 (Hun)

Instagram: @childhotline\_ua (Ukr) - send a private message

Facebook: @lastradaukraine (Ukr) - send a private message

Telegram: @CHL116111 (Ukr) - send a private message

#### Menedék Hungarian Association for Migrants

📍 Countrywide

Psychological screening, PFA, Individual and Group Counseling, Referrals

Languages: Hun, Eng, Ukr

Via Messenger: <https://www.facebook.com/menedekegyesulet>  
[anna.doherty@menedek.hu](mailto:anna.doherty@menedek.hu), +36 20 37 67 920

#### Cordelia Foundation for the Rehabilitation of Torture Victims

📍 Countrywide

Psychological First Aid, Psychiatric and psychological therapy, referrals

Phone: +36 1 34 91 450 (Hun, Eng, Ukr)

<https://www.facebook.com/CordeliaFoundation>

[cordelia@cordelia.hu](mailto:cordelia@cordelia.hu), [hardi.lilla@cordelia.hu](mailto:hardi.lilla@cordelia.hu)

#### Péterfy Hospital

📍 Budapest

Crisis Intervention Outpatient Clinic

(crisis intervention therapy and psychiatric help for refugees)

Languages: Hun, En

Address: 1074 Budapest, Alsóerdősor u. 7.

### Medical Care

Support survivors of rape to access medical care within 72 hrs

#### EMMA Association

📍 Countrywide

Counseling for pregnant women and children, MHPSS, referrals for medical care (urgent ObsGyn, pediatrics)

Languages: Hun, Eng (available upon request: Ukr, Ru)

Helpline:

+36 70 622 3346 - 0-24 everyday

+36 80 414 565 (every day 10 am-12 pm and 9pm-11pm)

[help.women.ukraine@gmail.com](mailto:help.women.ukraine@gmail.com)

[emma.vonal@emmaegyesulet.hu](mailto:emma.vonal@emmaegyesulet.hu)

via Messenger <https://www.facebook.com/emmaegyesulet/>

[info@emmaegyesulet.hu](mailto:info@emmaegyesulet.hu)

#### PATENT Association

📍 Budapest and countrywide

Access to SRH services,

referral to access Clinical Management of Rape

Languages: Hun, Eng (available upon request: Ukr, Ru)

Helplines:

+36 70 622 3346 - 0-24 everyday

+36 80 80 80 81 (free within Hungary, +36 21 20 22 083 from abroad, not free, Wed 4pm-6pm and Thu 10am-12pm)

[help.women.ukraine@gmail.com](mailto:help.women.ukraine@gmail.com), [jog@patent.org.hu](mailto:jog@patent.org.hu)

[jog@patent.org.hu](mailto:jog@patent.org.hu)

#### Hungarian Red Cross

📍 Záhony

First Aid, medical support, PFA

Keröva Aniko, HRC Health Coordinator

+36 20 311 0575, [aniko.keri@redcross.hu](mailto:aniko.keri@redcross.hu)

### Safety and Security

#### Police

📍 Countrywide

Crime prevention and victim support experts in each county-level police and in Budapest

Phone: 107 (If the survivor wants to pursue police/legal action)

A map of all entities (police stations, local gov. offices, regional victim support centres) is available at:

<https://bit.ly/3LDGuVH>

#### Central free hotline for victim support

📍 Countrywide

Central free hotline for victim support in Hungarian

+36 80 225 225 (Languages: Hun)

#### Toll-free, 24/7 National Crisis Management and Information Telephone Services (OKIT)

📍 Countrywide

Safety, crisis situations, safe shelter, child survivors, trafficking

+36 80 20 55 20

[okit@csalad.hu](mailto:okit@csalad.hu)

#### Hungarian Interchurch Aid (HIA)

Ökumenikus Segélyszervezet

📍 Countrywide

Safe houses, online counseling,

psychological, legal and social counseling

Languages: Hun

Online platform: [segelyszervezet.hu/anonimtanacsadas](https://segelyszervezet.hu/anonimtanacsadas)

#### Budapest Pride

📍 Countrywide

Safe houses LGBTQ+

Contacts: [viktoria.radvanyi@budapestpride.hu](mailto:viktoria.radvanyi@budapestpride.hu);

[laura.toth@budapestpride.hu](mailto:laura.toth@budapestpride.hu)

### Legal Information and Assistance

#### PATENT Association

📍 Budapest and countrywide

Legal aid

Languages: Hun, Eng (available upon request: Ukr, Ru)

Helplines:

+36 70 622 3346 - 0-24 everyday

+36 80 80 80 81 (free within Hungary, +36 21 20 22 083 from abroad, not free, Wed 4pm-6pm, Thu 10am-12pm, Sat 4-6pm)

[jog@patent.org.hu](mailto:jog@patent.org.hu)

[help.women.ukraine@gmail.com](mailto:help.women.ukraine@gmail.com)

via Messenger: <https://www.facebook.com/patent.egyesulet.ngo>



**UNHCR**  
The UN Refugee Agency

Global  
Learning and  
Development  
Centre

# IASC GBV Pocket Guide

*How to support survivors when GBV services are not available*

- **Prepare:** Know what services are available
- **Look:** Ensure the survivor is safe
- **Listen** to what the survivor needs
- **Link** the survivor to services



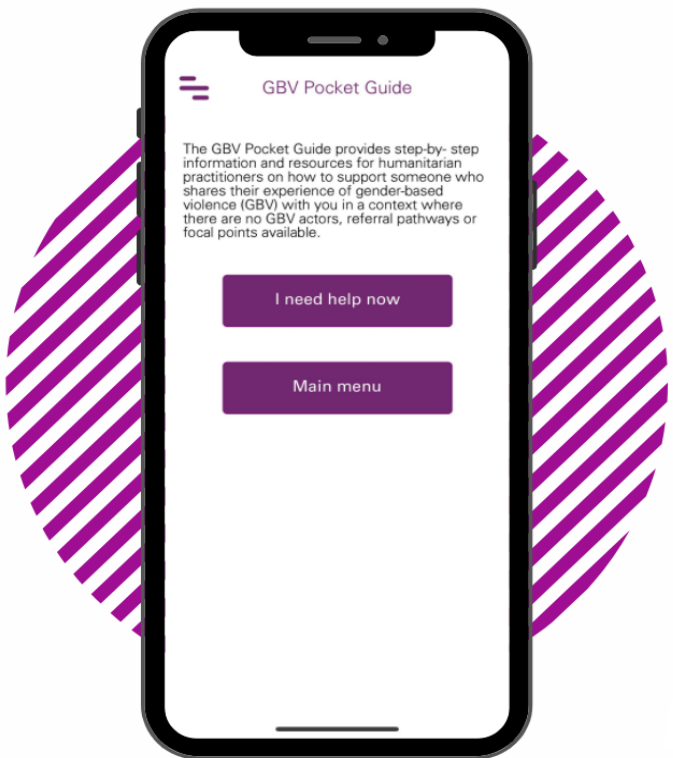
# IASC GBV Pocket Guide (continued)



- Versions in
  - [English](#)
  - [Russian](#)
  - [Ukrainian](#)
  - Hungarian (coming soon)

<https://play.google.com/store/apps/details?id=com.gbvpocketguide&hl=en>





# THIS IS ALL IN MOBILE APP FORM!



SCAN TO DOWNLOAD THE NEW RELEASE  
**GBV POCKET GUIDE APP**