

Total Arrivals from Ethiopia


23,150

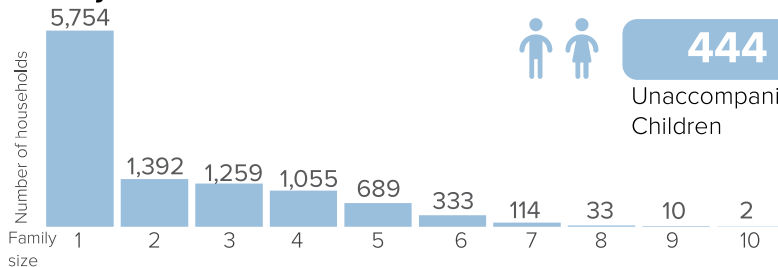
 Individuals Registered
 Source: UNHCR, COR
 As of 1 June 2022

10,641

Households Registered


14 Individuals
 Relocated from Hamdayet
 in May

Family Size



Introduction:

In support of the Government of Sudan's response to the ongoing influx of refugees from Ethiopia's Tigray region to eastern Sudan, UNHCR, partners, and other UN agencies set up a new refugee settlement in Tunaydbah-Gedaref State. First group of refugees were relocated to this site on last January 3, 2021 and individual biometric registration is ongoing. The dashboard below presents the population profile for Tunaydbah Camp. Reduction in the population figures for May as result of exclusion no show for assistance collection for past 8 months.

Persons with Specific Needs


2,068

Individuals


444

 Unaccompanied/Separated
 Children

Country of Origin

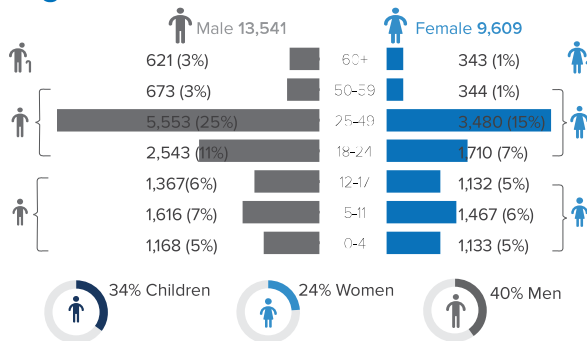

23,143

Ethiopians

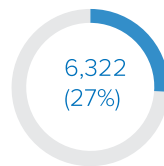

7

Eritreans

Age-Gender Breakdown

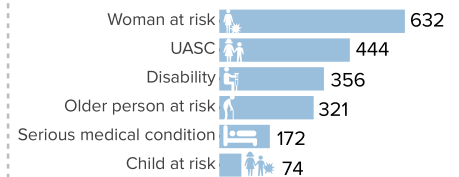


Reproductive-Age Women/Girls

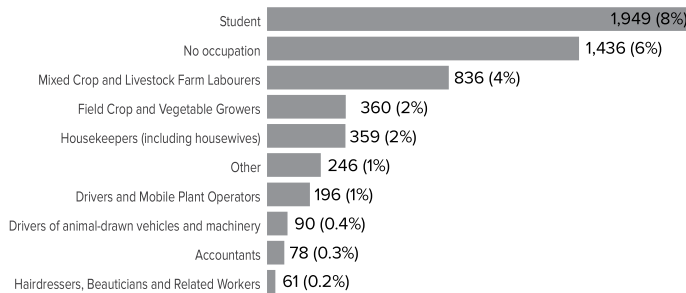

 Females in
 reproductive-age
 (12-49 yrs)

Percentages related to total population

Specific Needs (top 5)

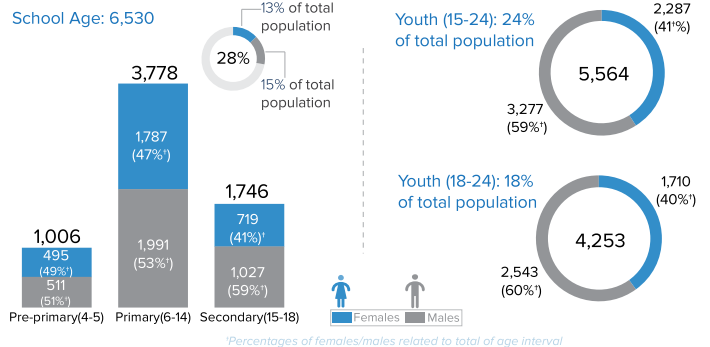

 Source: ProGres v4/Rapp
 UASC: Unaccompanied or separated child

Occupation (Top 10)


8,982 Individuals with no occupation data

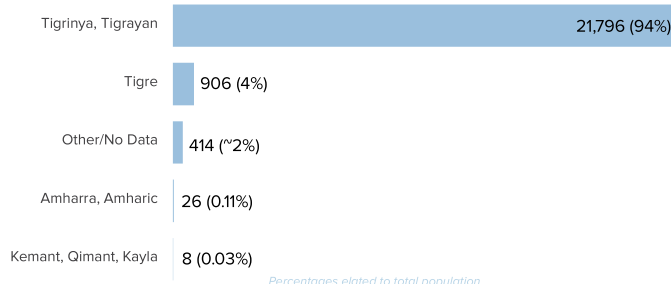
Percentages related to total population

School Age Children and Youth



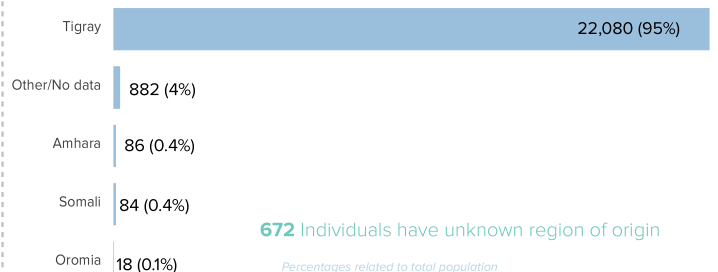
Percentages of females/males related to total of age interval

Ethnicity (Top 5)



Percentages related to total population

Top 5 Regions of Origin (Ethiopia)


672 Individuals have unknown region of origin

Percentages related to total population