



OVERVIEW OF RECENT ASSESSMENT PROCESSES IN THE CONTEXT OF THE REFUGEE CRISIS IN MOLDOVA

- Refugee Mobility & Needs Mapping & Analysis Based on Alternative Data (UNDP, Orange, Government)
- Assessment of Local Public Authorities' Needs and Capacities (UNDP, CALM, IOM, UNHCR, CBS Axxa)

Overview



1

Refugee Mobility & Needs Mapping & Analysis Based on Alternative Data



Contact:
Dumitru Vasilescu dumitru.vasilescu@undp.org

2

Assessment of Local Public Authorities' Needs and Capacities to Manage the Refugee Crisis



Contact:
Andrei Darie andrei.darie@undp.org



UN
DP

1. Refugee Mobility & Needs Mapping & Analysis Based on Alternative Data



1. Refugee Mobility Dashboard

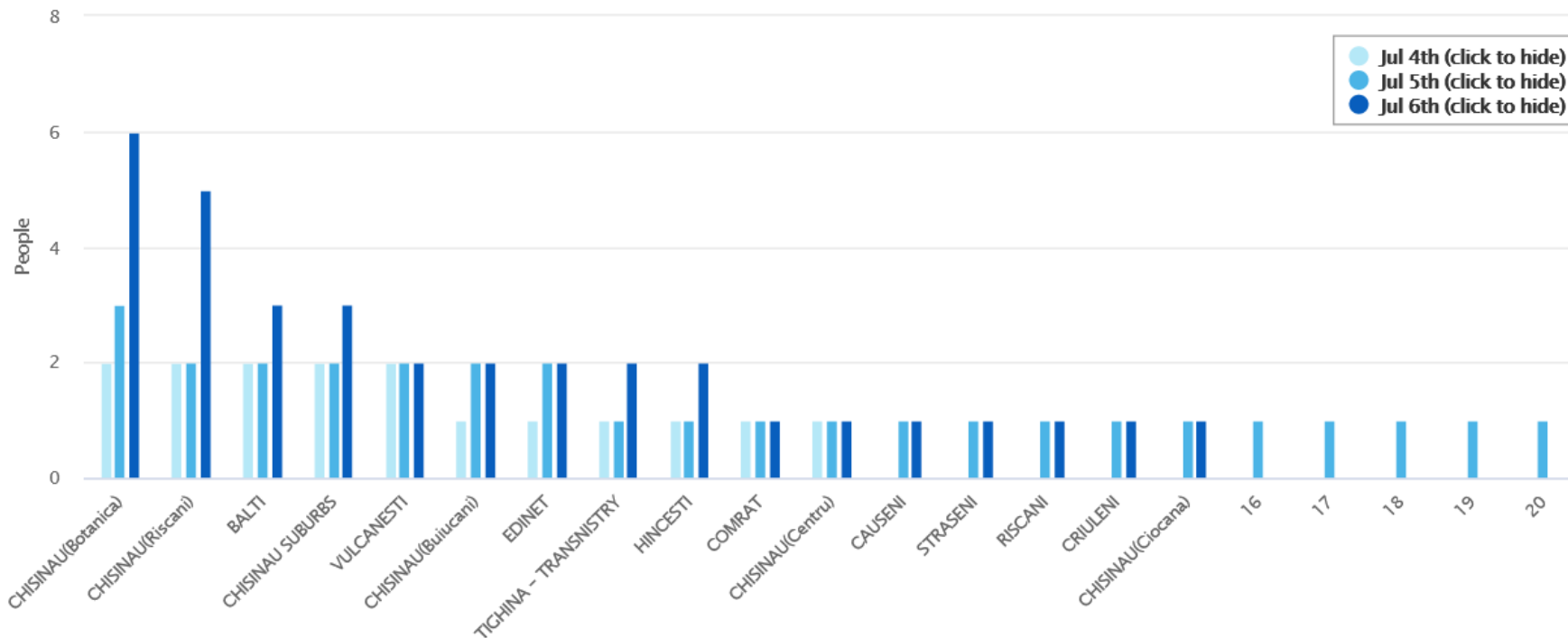


- Demo version (one-time) **situational analysis of the mobility data dashboard and analytical report** on refugees' mobility in Moldova
- Coverage: 60-70% of Moldova
- Produced based on technical records related to **unknown/ impersonalized customers** (data the information that cannot be linked to an identified or identifiable person) **PrePaid services** users and **in-bound Roamers** located in Orange Moldova network
- Customers are not registered or personalized within Orange Moldova systems
- 3 datasets:
 - 1) PrePay users first call location
 - 2) PrePAy Active users location
 - 3) Active Roamers location

1. Refugee Mobility Dashboard

Zoom on PrePay users first call location

Geographical mapping at "raion" level of the location where the Prepay KIT was used to make the first call.
Date range: Jul 4th - Jul 6th 2022



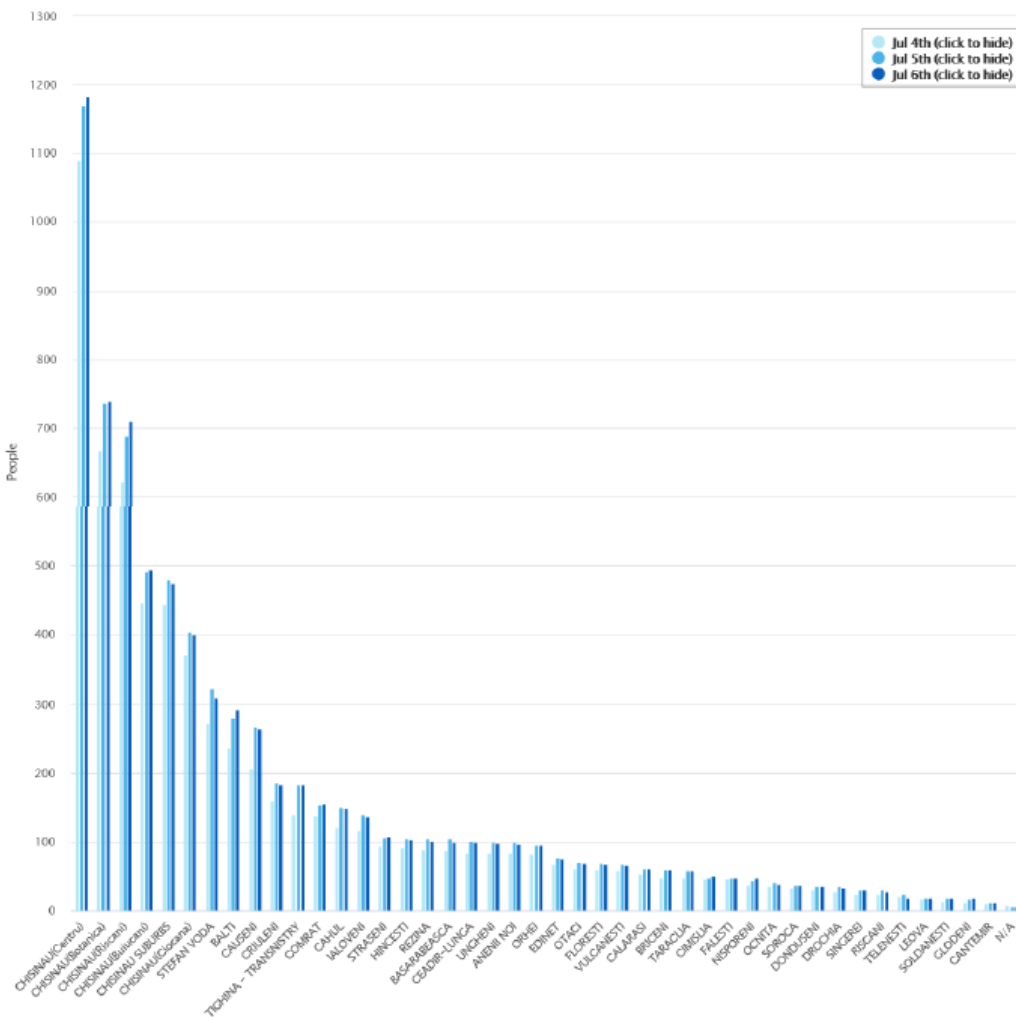
Tab view

City	Jul 4th	Jul 5th	Jul 6th
CHISINAU(Botanical)	2	3	6
CHISINAU(Riscani)	2	2	5
BALTI	2	2	3
CHISINAU SUBURBS	2	2	3
VULCANESTI	2	2	2
CHISINAU(Buiucani)	1	2	2
EDINET	1	2	2
TIGHINA - TRANSNISTRY	1	1	2
HINCESTI	1	1	2
COMRAT	1	1	1
CHISINAU(Centru)	1	1	1
CAUSENI	0	1	1
STRASENI	0	1	1
RISCANI	0	1	1
CRIULENI	0	1	1
CHISINAU(Ciocana)	0	1	1

1. Refugee Mobility Dashboard

Zoom on PrePay active users location

Geographical mapping at "raion" level of the location where a Prepay KIT is used to-date
Date range: Jul 4th - Jul 6th 2022



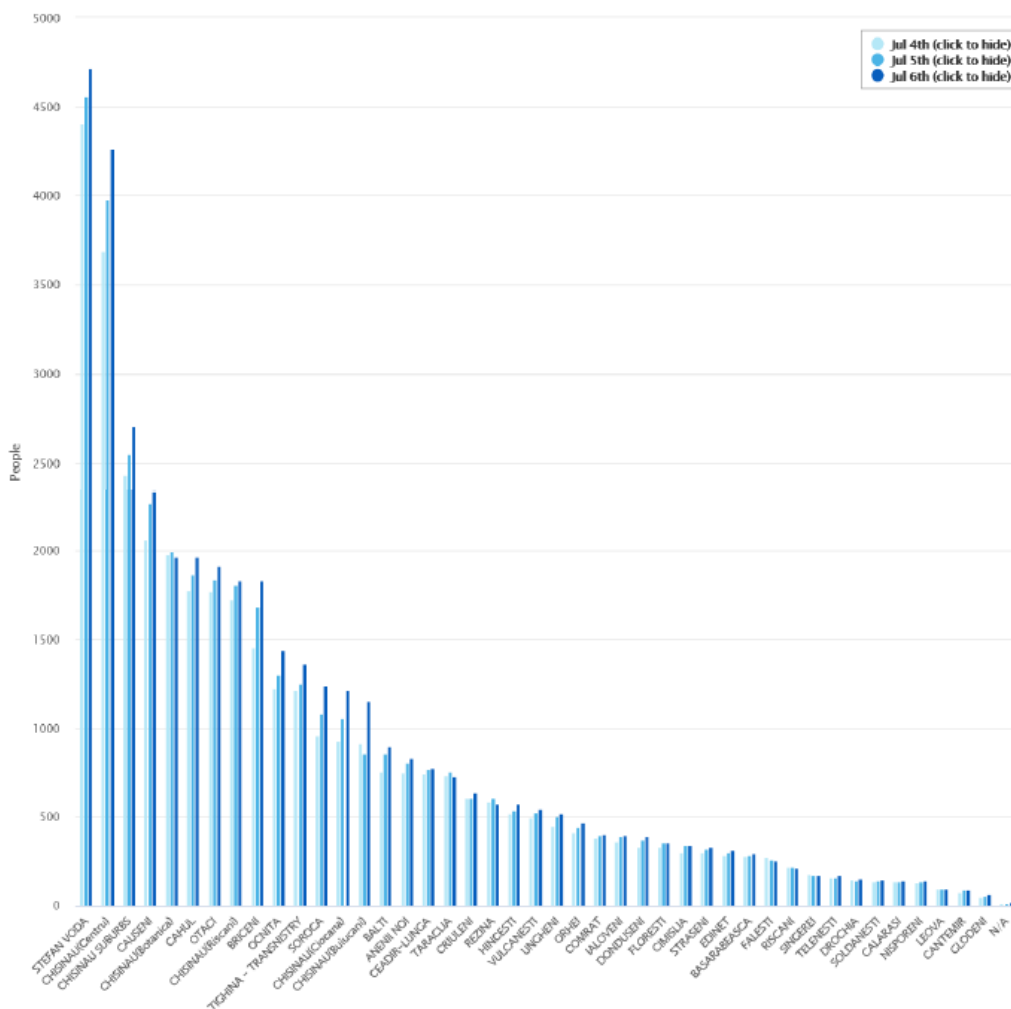
Tab view

City	Jul 4th	Jul 5th	Jul 6th
CHISINAU(Centru)	1089	1169	1183
CHISINAU(Botanica)	667	737	740
CHISINAU(Riscani)	622	689	710
CHISINAU(Baiucani)	447	491	464
CHISINAU SUBURBS	443	480	475
CHISINAU(Clocana)	371	403	400
STEFAN VODA	272	323	309
BALTI	236	279	292
CAULENI	205	267	264
CRULENI	160	186	183
TIGHINA - TRANSNISTRY	140	182	182
COMRAT	138	153	155
CAHUL	121	151	149
IALOVENI	116	140	139
STRASENI	93	106	109
HINCESTI	92	105	103
REZINA	89	105	102
BASARABEASCA	88	104	100
CEADIR-LUNGA	85	102	100
UNGHENI	85	100	88
ANENII NOI	84	100	97
ORHEI	83	95	95
EDINET	67	76	75
OTACI	61	71	69
FLORESTI	60	69	68
VULCANESTI	56	67	66
CALARASI	53	62	61
BRICENI	46	60	60
TARACLIA	47	59	59
CIMISLIA	46	48	50
FALESTI	46	48	47
NISPORENI	37	44	47
OCNITA	35	41	39
SOROCA	34	37	37
DONDULENI	30	36	35
DROCHIA	27	35	34
SINGEREI	25	31	31
RISCANI	24	31	28
TELENESTI	22	24	19
LEOVA	17	19	19
SOLDANESTI	14	18	18
GLODENI	12	17	18
CANTEMIR	11	13	13
NA	8	8	8

1. Refugee Mobility Dashboard

Zoom on Active Roamers location

Geographical mapping at "raion" level of the location where a Roamer SIM card is used to-date.
Date range: Jul 4th - Jul 6th 2022



Tab view

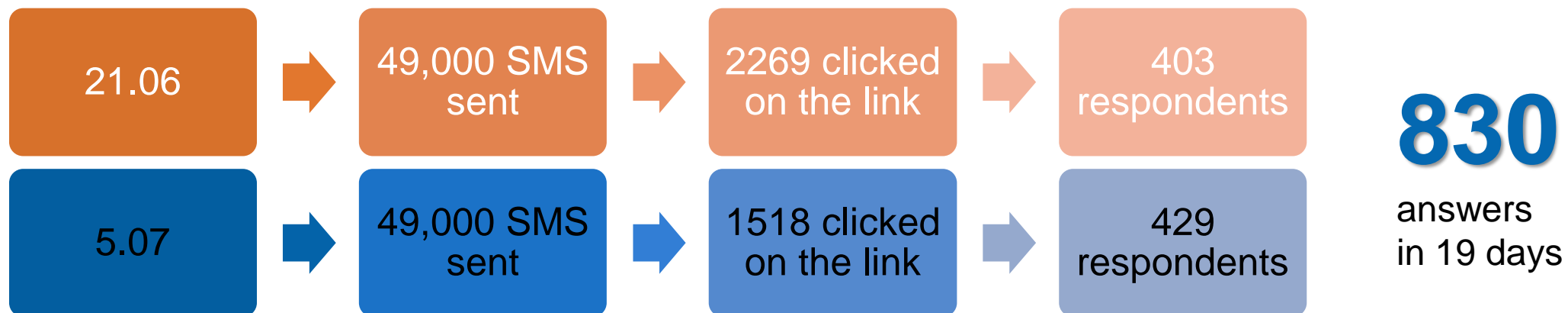
City	Jul 4th	Jul 5th	Jul 6th
STEFAN VODA	4401	4557	4717
CHIȘINĂU(Centru)	3691	3976	4262
CHIȘINĂU SUBURBS	2431	2549	2705
CAUSENI	2061	2264	2332
CHIȘINĂU(Botanica)	1978	1993	1968
CAHUL	1779	1807	1966
OTACI	1772	1836	1914
CHIȘINĂU(Riscani)	1726	1806	1830
BRICENI	1455	1693	1828
OCNITA	1222	1208	1439
TIGHINA - TRANSNISTRY	1216	1253	1366
SOROCA	854	1032	1240
CHIȘINĂU(Ciocana)	925	1059	1214
CHIȘINĂU(Bulucani)	914	898	1149
BALTI	756	839	900
ANENII NOI	749	832	831
CEADIR-LUNGA	742	709	776
TARACLIA	730	753	725
CRIULENI	607	610	637
NEZINA	584	610	575
HINCEȘTI	522	538	575
VULCANES TI	498	528	544
UNGHEMI	446	501	522
ORHEI	411	445	464
COMRAT	381	386	389
IALOVENI	358	367	367
DONDUȘENI	332	370	362
FLOREȘTI	331	356	354
CIMIȘLIA	301	342	340
STRĂȘENI	299	319	328
EDINET	285	302	314
BASARABEASCA	275	285	288
FALEȘTI	272	261	254
RISCANI	218	216	212
SÎNGEREI	179	170	173
TELENEȘTI	158	157	169
DROCHIA	150	142	153
SOLDANEȘTI	135	140	146
CALARASI	133	137	143
NISPORENI	127	137	142
LEOVA	93	93	97
CANTIMIR	77	87	88
GLODENI	47	55	65
N/A	10	10	15

Possibility (upon request) to require trend analysis over time, or other support from Orange MD.

Link to the Mobility Dashboard:
<https://cdn.orange.md/daas/>

1. Refugee needs assessment based on SMS survey: Methodology

- Upon request from the Government, the survey assessed needs of refugees, length of stay and employability, using the list of Prepay numbers distributed by Orange MD (~49'000 numbers)
- To improve turnout, respondents received a bonus of 60 free minutes (1st SMS), and 1 GB free internet (2nd SMS)
- The survey and analysis is directly generated on Monday.com analysis directly and available to the government
- The questionnaire was sent twice:



Total cost: 3,070 EUR (no profit for Orange)

1. Refugee needs assessment based on SMS survey: Results



Demographics

- 56.5% from Odessa
- 17.4% from Mikolaiv
- 58% age 25-44
- 60% married

Mobility

- 69% living in Chisinau
- 48% living with friends or relatives
- 40% rent accommodation

Intentions to stay

- 42.4% plan to stay 90-120 days
- 23% plan to stay 61-90 days
- 56% plan to stay less than 90 days

Needs

- 22% Internet connection
- 13% healthcare and reproductive services
- 12% accommodation
- 12% banking
- 10% childcare or care services

Source of income

- 41% assistance from organisations
- 20% allowance from the government of Moldova
- 11% savings

Employment

- 37% looking for a job in sectors:
 - 15% community and social services
 - 13% HORECA services
 - 7% retail

1. Next services for the government



- **Integrated analysis** of the collected datasets (linked by the geolocation and other variables) and development of integrated situational report for the Government
- Development of **new services**, to include overlaying of 112 data on accidents, incidents, EO data and other datasets to generate additional insights
- **Expand SMS service** to keep refugee population informed on various legal and other aspects related to their stay in Moldova (periodical sending of SMS notifications, other)
- More targeted SMS service, based on their needs, location, expressed interests

2. Assessment of Local Public Authorities' Needs and Capacities to Manage the Refugee Crisis



UNHCR
The UN Refugee Agency

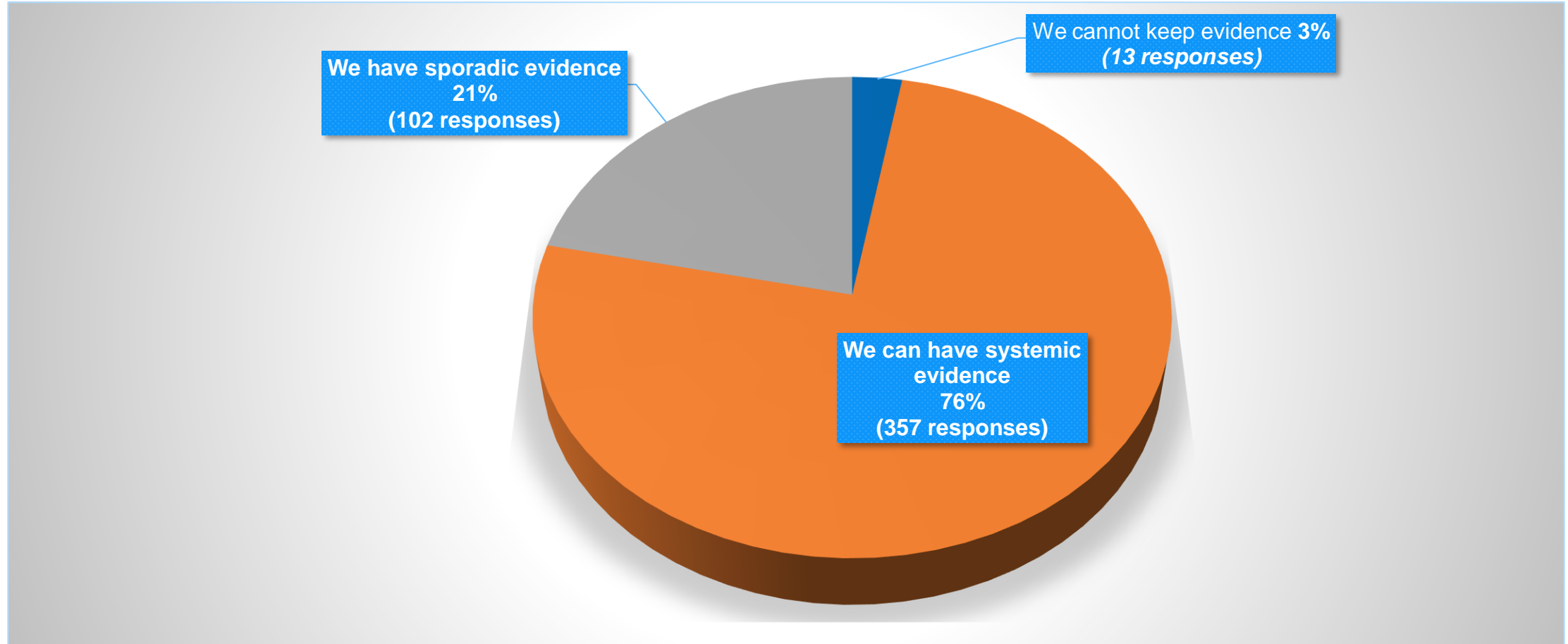


2. Capacity and Needs Assessment of Local Public Authorities



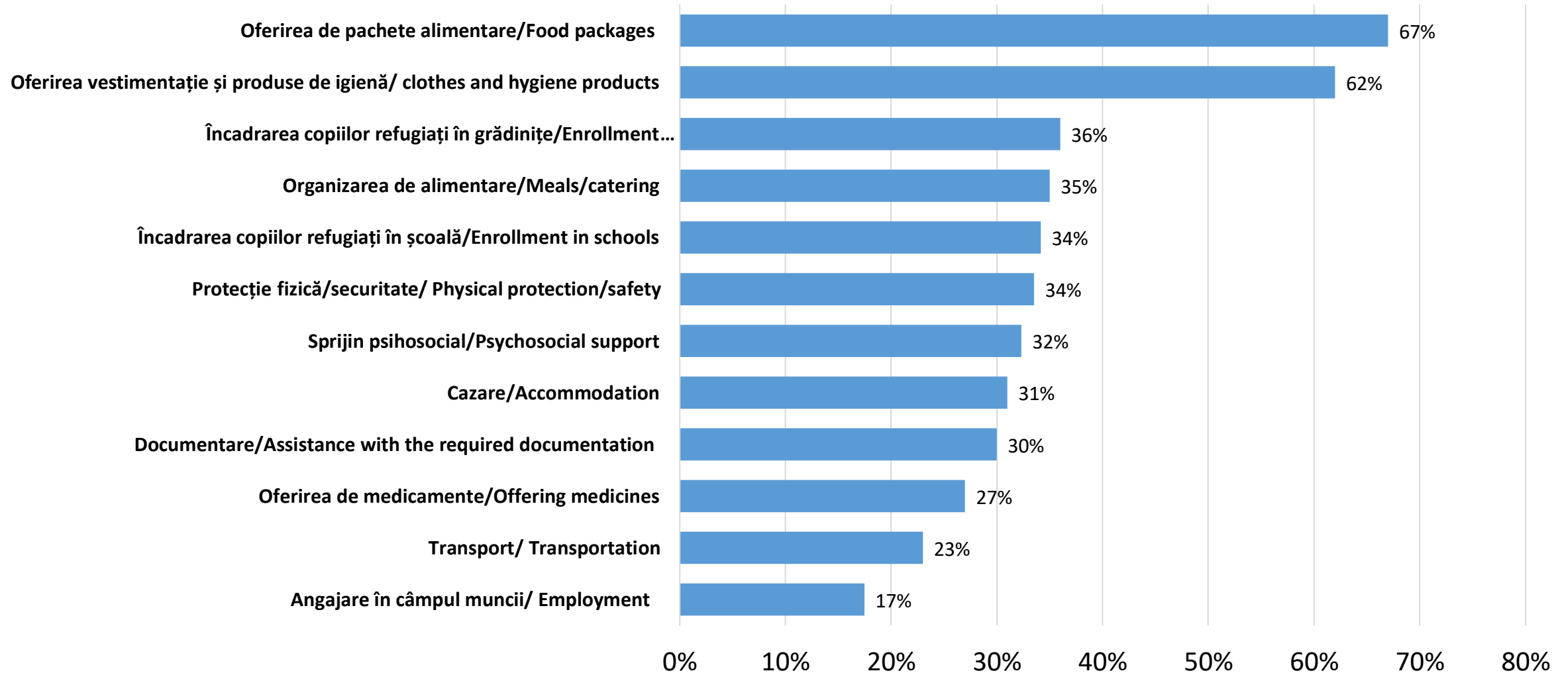
- Data collection: Online questionnaire filled by LPAs
- Collection period: May - June 2022
- Response rate:
 - 53% of all mayoralties (471)
 - Excludes Chisinau city
- LPAs declaring coverage of 15,373 refugees from Ukraine
- Covered the following thematic areas:
 - Number of refugees employed (by gender, sectors)
 - Perception of LPAs on the trends of refugees in their community
 - Type of services/ assistance offered, and capacity of LPAs to offer them in the upcoming 3 months
 - Specific needs and capacities of LPAs to manage the crisis

76% surveyed LPAs can keep evidence of the number of refugees in their community



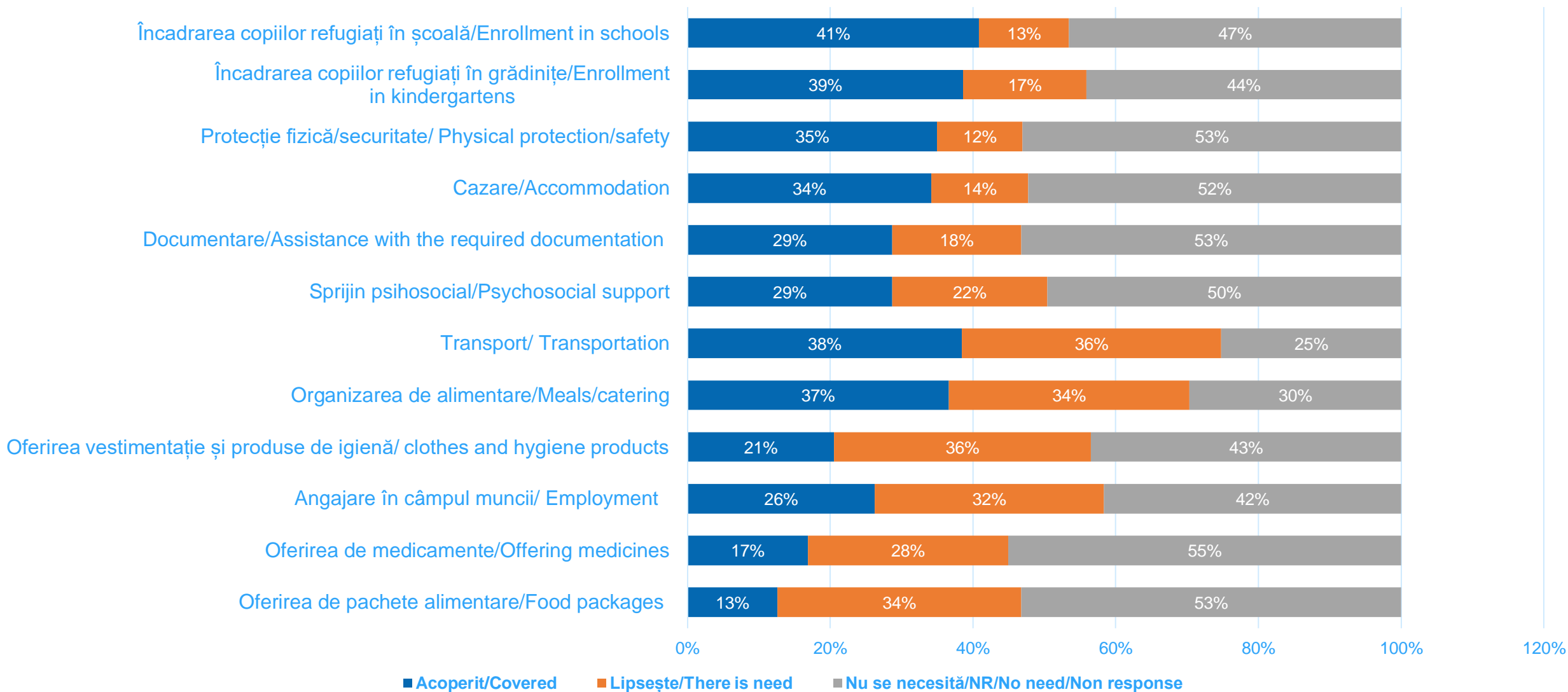
86% surveyed LPAs supported refugees

Covering 15,373 refugees (except Chisinau city)

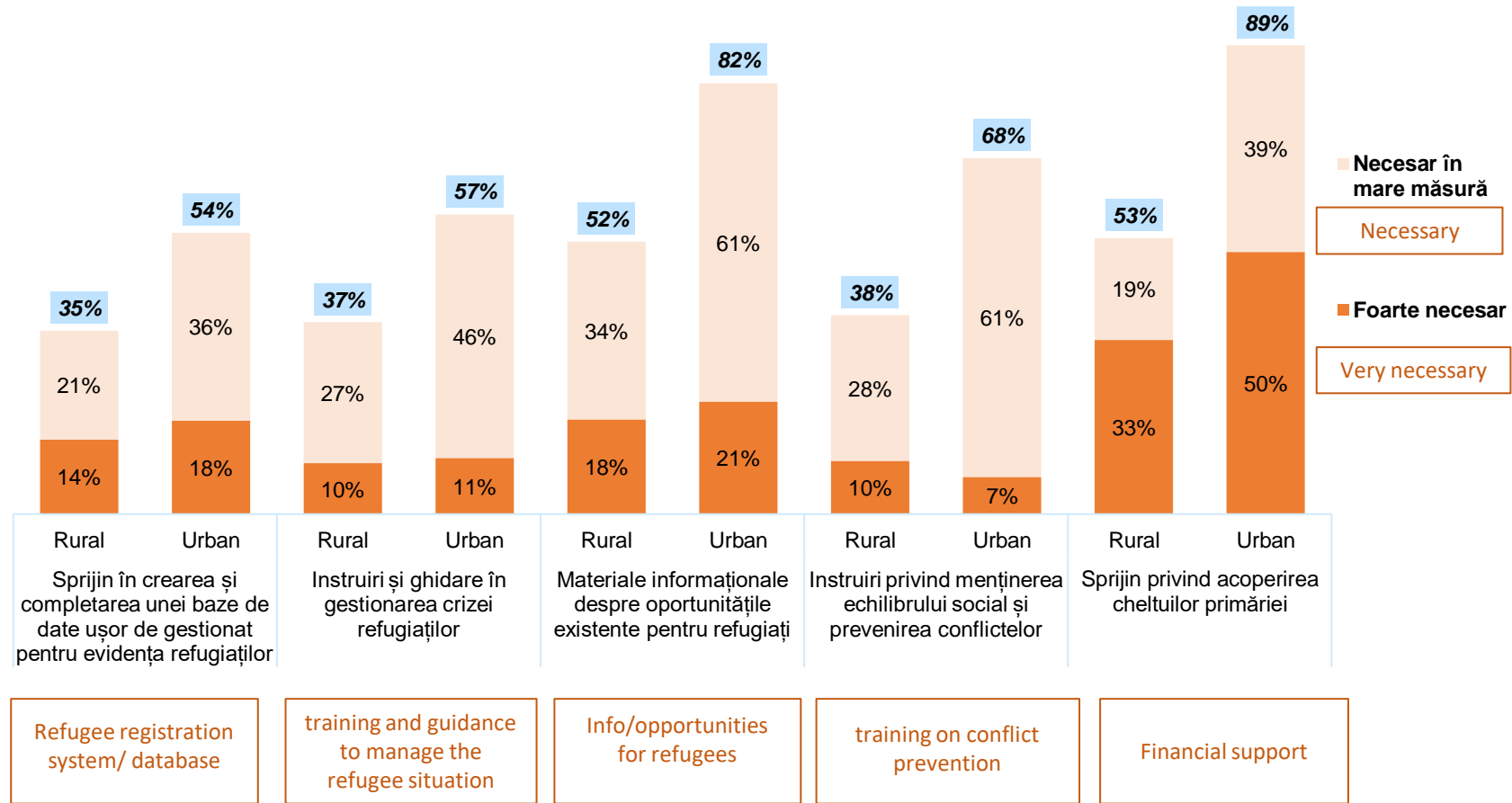


Coverage of refugee needs by surveyed LPAs

Covering 15,373 refugees (except Chisinau city)



Needs of surveyed LPAs to manage the refugee crisis



LPA views on public services and infrastructure needed to be enhanced to serve the refugees in the surveyed communities



- 48% IT equipment for online schooling in schools or RACs
- 45% social canteen
- 47% employment services & livelihoods opportunities
- 36% community center
- 39% temporary accomodation
- 36% medical centers and services
- 35% public transportation
- 29% pre-school centers
- 25% schools

