

Total Arrivals from Ethiopia


2,604

Individuals Registered

Source: UNHCR, COR

As of 30 September 2022

Population figures have been adjusted following the inactivation of no-shows for the distributions of assistance for 6 consecutive months

1,277

Households

Introduction:

In support of the Government of Sudan's response to the ongoing influx of refugees from Ethiopia's Tigray region to eastern Sudan, UNHCR, partners, and other UN agencies set up a new refugee settlement in Babikre-Gedaref State. First group of refugees were relocated to this site 2021 and individual biometric registration is ongoing for new arrivals. The dashboard below presents the population profile for Babikre settlement

Persons With Specific Needs


263

Individuals


74

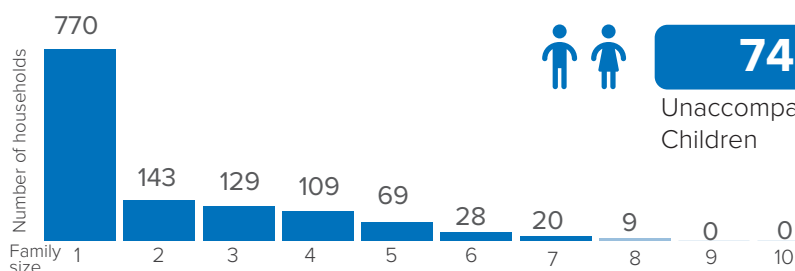
Unaccompanied/Separated Children

Country of Origin

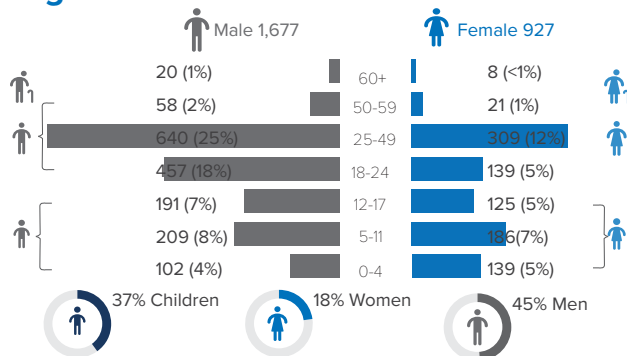
2,604

Ethiopians

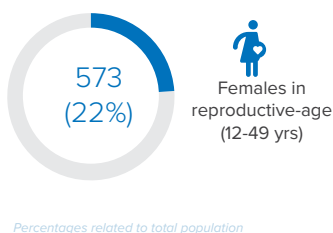
Family Size



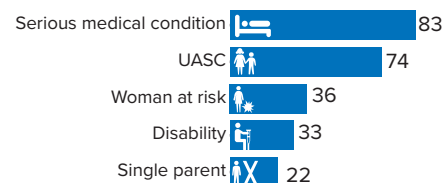
Age-Gender Breakdown



Reproductive-Age Women/Girls

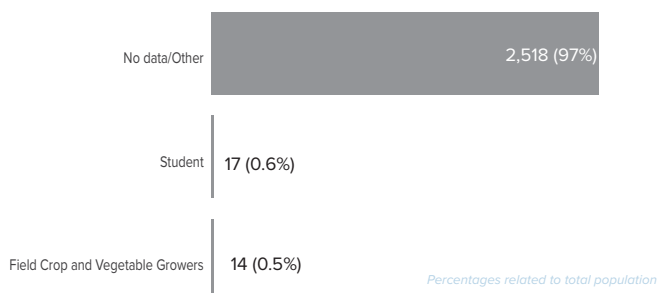


Specific Needs (top 5)

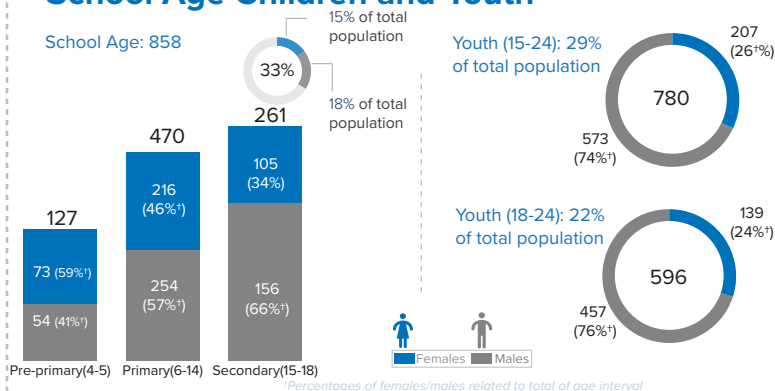


*Unaccompanied or separated child
Source: ProGres v4/Rapp

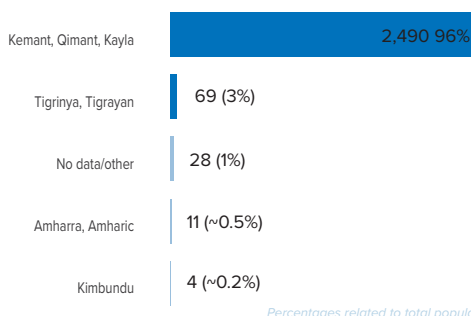
Occupation



School Age Children and Youth



Ethnicity (Top 4)



Regions of Origin (Ethiopia)

