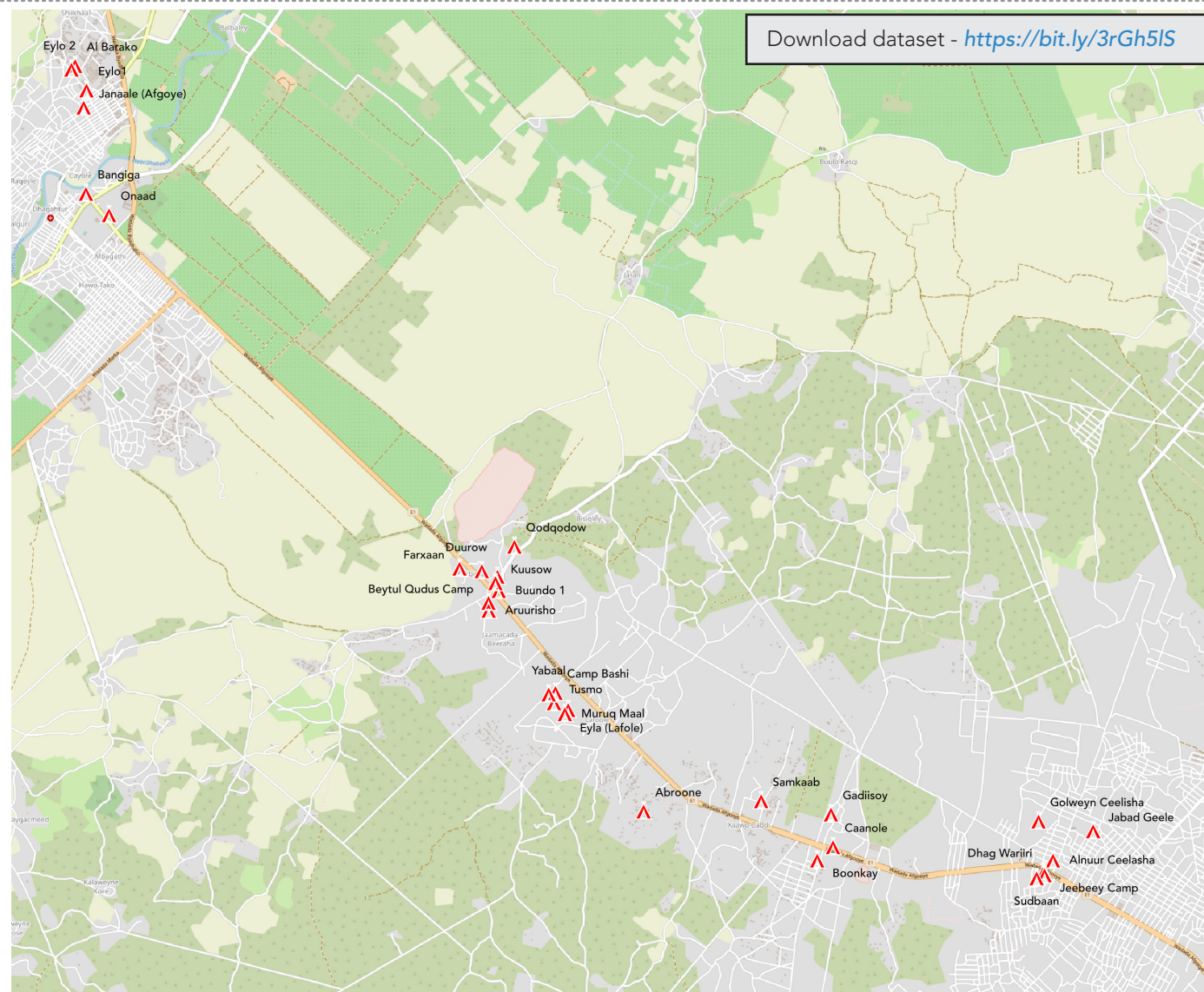


Download dataset - <https://bit.ly/3rGh5IS>



Map of verified IDP sites in Afgooye - October 2022

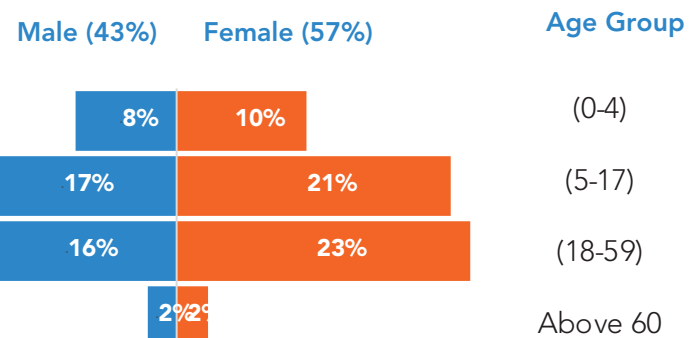
Assessment overview

An IDP site verification exercise was conducted in Afgooye in October 2022. The operation was led by the CCCM Partner AYUUB NGO and IRDO. 30 IDP sites were identified hosting 5,064 households or 30,384 individuals.

Compared to the last site verification conducted in April 2022, there was a decrease of 1,297 Households or 7,658 individuals. The number of IDP sites reduced by 17.

The reduction of IDP sites may be attributed to some IDPs who moved from Afgooye to some areas in Khada and Dayniile due to availability of humanitarian services in these areas, some of the IDPs verified before have integrated with the host communities, some of the camps initially verified were found not genuine "Bush Baris" and some IDP sites that did not meet the IDP site criteria (had less than 100HH) were merged with other IDP sites.

Demographic data of IDPs living in Afgooye



30 Verified IDP Sites
hosting **5,064** Households
hosting **30,384** Individuals

People living with disability

Using the Washington Group disability questions, statistics of people living with disabilities were derived

1,364 (4.5%)
people living with disability

- 265 (45% Female)** have difficulty with seeing (even wearing glasses)
- 175 (36% Female)** have difficulty with hearing (even using a hearing aid)
- 245 (46% Female)** have difficulty with communicating and/or understanding
- 285 (47% Female)** have difficulty with walking and/or climbing stairs
- 162 (52% Female)** have difficulty with dressing and/or washing
- 232 (45% Female)** have difficulty with remembering/concentrating

Eviction Risk Mapping

IDP sites were assessed based on their risk of eviction. Several factors were put into consideration such as IDP site tenure, type of agreements in place and whether an eviction notice has been issued recently.

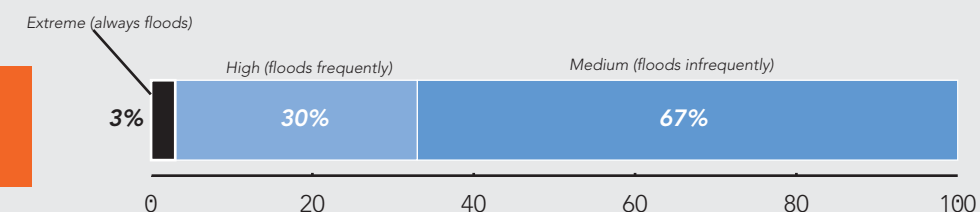
60% of IDP sites have been classified as having extreme or high risk of eviction

- 70%** of sites are landowner authorized occupancy
- 67%** of sites have agreements in place
- 60%** of those that have agreements have written agreements
- 55%** of those that have agreements have agreed end dates
- 10%** of sites have been issued with eviction notice within the last 3 months

Flood Risk Mapping

IDP sites were assessed based on their risk of flooding.

10 IDP sites (33%) have been classified as extreme (always floods) and high (floods frequently)



For more information
please contact the CCCM Cluster
Coordination Team

Benjamin Conner
<bconner@iom.int>

James Macharia
<macharia@unhcr.org>