



KENYA

Registered refugees and asylum-seekers

as of 31 July 2022

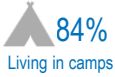
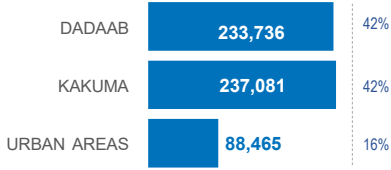


UNHCR
The UN Refugee Agency

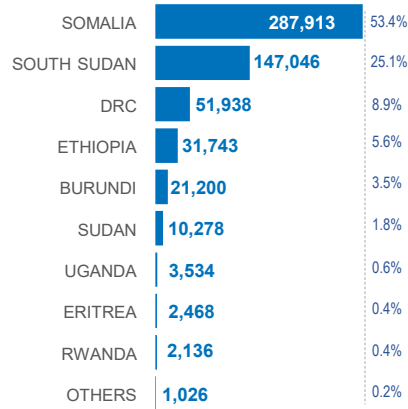
559,282

REGISTERED REFUGEES AND ASYLUM-SEEKERS

HOST LOCATIONS

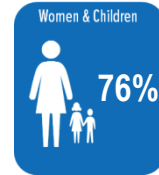


COUNTRIES OF ORIGIN

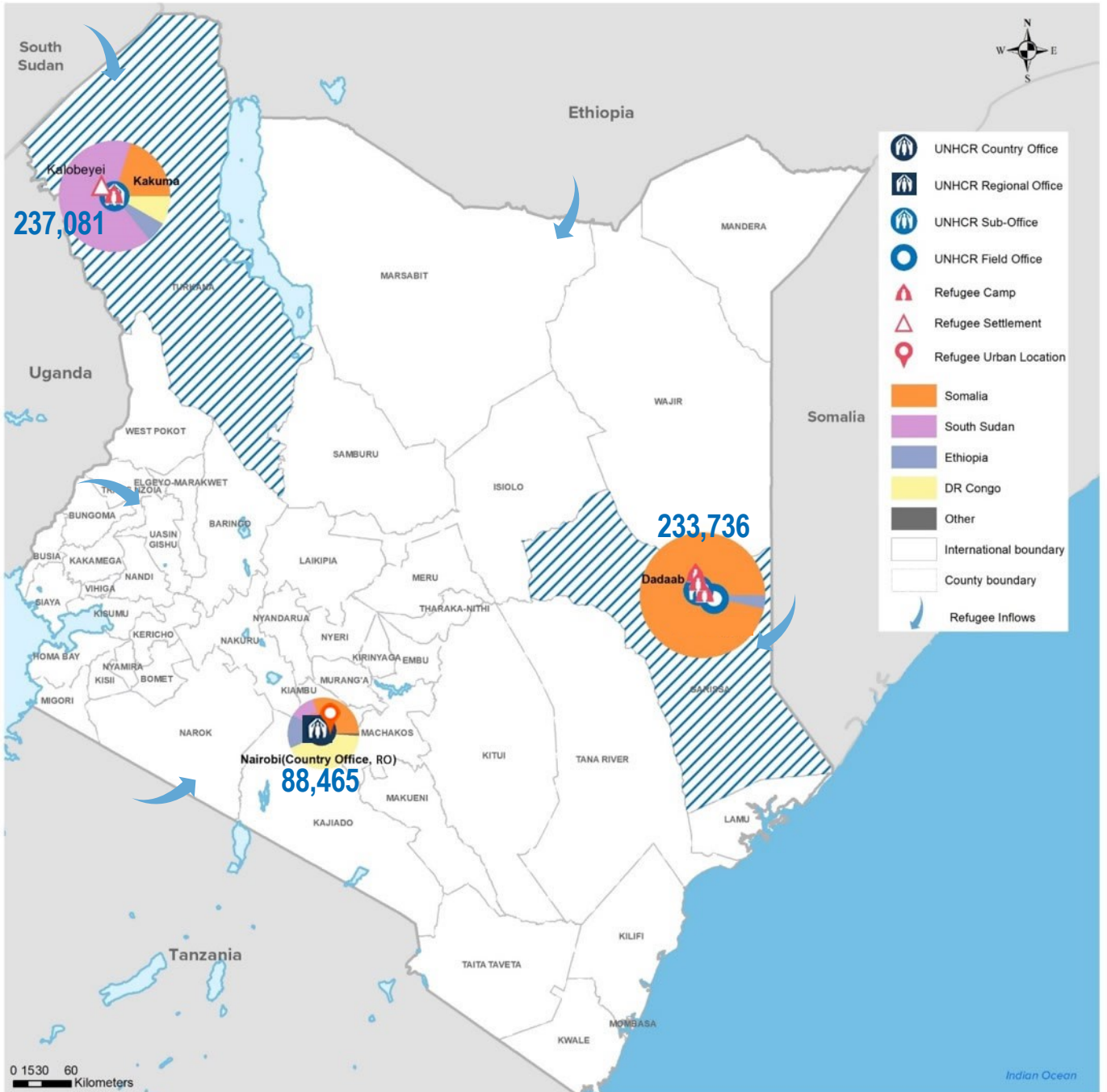


DEMOGRAPHICS

age and gender



LEGAL STATUS



The boundaries and names shown and the designations used on this map do not imply official endorsement or acceptance by the United Nations.



Statistical Summary

as of
31-Jul-2022

Refugees and Asylum Seekers in Kenya

	Total Refugee & Asylum Seeker Population	Dadaab Camp	Kakuma Camp	Kalobeyei Settlement	Urban (Eldoret)	Urban (Nbi, Msa & Nak)	
A. Refugees and Asylum Seekers	559,282	233,736	188,683	45,623	2,775	88,465	- Page 2
B. Registration	20,952	0	16,230			4,722	- Page 6
C. Refugee Status Determination							- Page 7
1. Applied	8,299	14	4,884			3,401	
2. Recognized	2,579	0	2,111			468	
3. Rejected	0	0	0			0	
4. Pending	64,236	1,431	31,393			31,412	
D. 2022 Resettlement Submissions	1,890						- Page 8
E. 2022 Resettlement Departures	663						- Page 9
F. 2022 Voluntary Repatriation	1,106						- Page 10

SUMMARY

The refugee and asylum-seeker population in Kenya stood at 559,282 persons as of 31 of July 2022, which comprises 495,046 (89%) refugees and 64,236 (11%) asylum-seekers. Compared with June 2022, there is an increase of 4,099 individuals in the total population, from 555,183 to 559,282 as at the end of July 2022, of which 2,749 were new arrivals (including In-Situ) mostly from South Sudan, the Democratic Republic of the Congo, Ethiopia, and Burundi. There were 1,067 new birth registrations undertaken during the month of July 2022.

The PRIMES integrated Biometrics Identity Management System (BIMS) was actively used throughout the reporting period to secure individual identities of the population, thus ensuring continuity of identity over time and in different locations across the world, reducing avenues for identity fraud and other misrepresentations. Population Registration and Identity Management Eco-System (PRIMES) is a platform for all UNHCR registration and identity management tools and applications.

Additionally, the Global Distribution Tool (GDT) was used to extract verification and assistance distribution lists from PRIMES and to authenticate the identity of beneficiaries for assistance provided by UNHCR and partners. The Self-Service Kiosk (KASI) was used by refugees to make various appointments, including complaints, documentation and data correction/updates, with UNHCR (Protection), Department of Refugee Services and the Kakuma Kalobeyei Challenge Fund. KASI2 continued to be utilised by refugees who are residing in urban areas in order to access services provided by UNHCR and the Department of Refugee Services (DRS).

1. Population decreases

a. Voluntary Repatriation: From 1st of January to 31 of July 2022, UNHCR and partners have assisted a total of 1,106 persons to return to their places of origin voluntarily.

b. Resettlement: From 1 January to 30th of June 2022, a total of 663 refugees departed to various resettlement.

c. Other Decreases: Closure/Inactivation of 275 individuals was undertaken during the continuous registration activities.

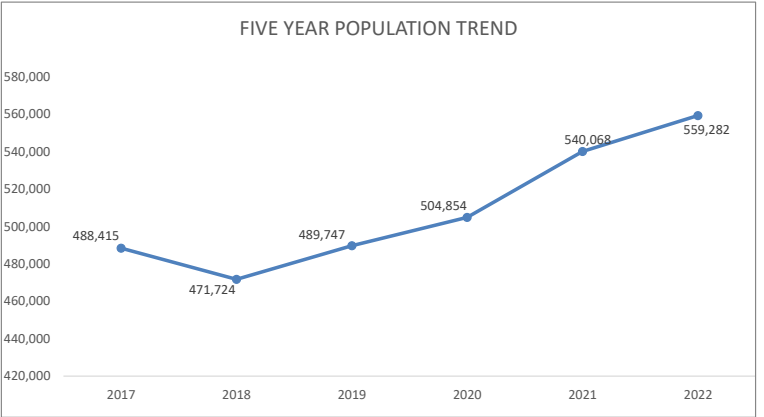
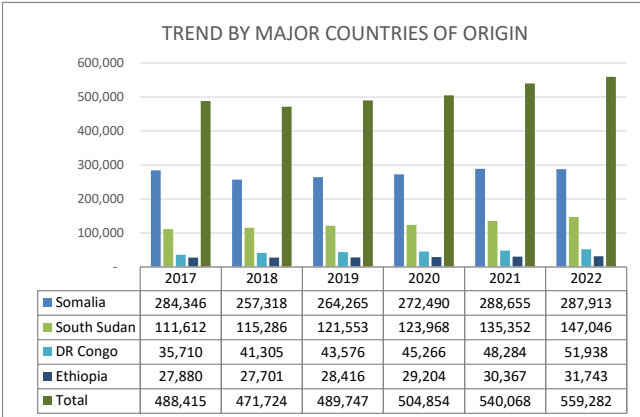
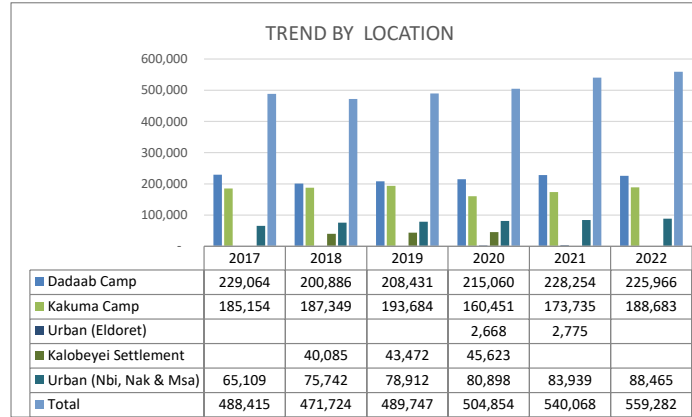
2. Population increases

a. New registration: A total of 3,808 individuals were registered during the reporting period, mainly new arrivals (2,749). Hence, the total number of persons registered since the beginning of January 2022 stands at 20,952 (Camps 16,230 and Urban 4,722) – an average increase of 2,993 per month.

b. Other Increases: A total of 291 individuals were reactivated after re-establishing contact with Department of Refugee Services during the continuous registration activities.

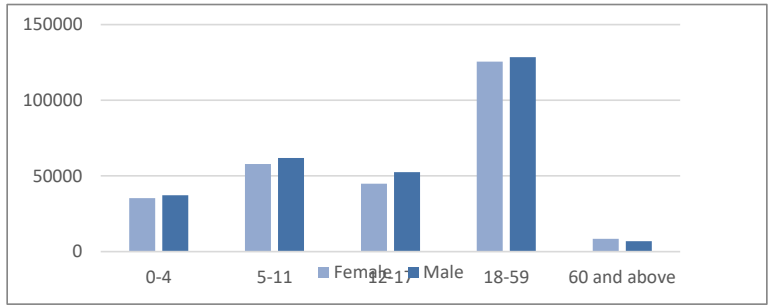
REFUGEES AND ASYLUM SEEKERS IN KENYA BY COUNTRY OF ORIGIN AND LOCATION

Country of Origin	2017				2018				2019				2020					2021						2022					
	Dadaab Camp	Kakuma Camp	Nairobi	Total	Dadaab Camp	Kakuma Camp	Nairobi	Total	Dadaab Camp	Kakuma Camp	Urban (Nbi, Nak & Msa)	Total	Dadaab Camp	Kakuma Camp	Kalobeyei Settlement	Urban (Nbi, Nak & Msa)	Total	Dadaab Camp	Kakuma Camp	Kalobeyei Settlement	Urban (Eldoret)	Urban (Nbi, Nak & Msa)	Total	Dadaab Camp	Kakuma Camp	Kalobeyei Settlement	Urban (Eldoret)	Urban (Nbi, Nak & Msa)	Total
Total	238,152	185,154	65,109	488,415	208,633	187,349	75,742	471,724	217,151	193,684	78,912	489,747	223,420	160,451	40,085	80,898	504,854	236,254	173,735	43,472	2,668	83,939	540,068	233,736	188,683	45,623	2,775	88,465	559,282
Somalia	229,064	35,549	19,733	284,346	200,886	33,844	22,588	257,318	208,431	34,620	21,214	264,265	215,060	35,743	104	21,583	272,490	228,254	37,412	117	59	22,813	288,655	225,966	38,355	120	59	23,413	287,913
South Sudan	990	105,168	5,454	111,612	978	108,450	5,858	115,286	938	112,189	8,426	121,553	625	85,107	29,778	8,458	123,968	641	90,832	32,954	2,452	8,473	135,352	616	100,300	34,979	2,566	8,585	147,046
DR Congo	114	11,533	24,063	35,710	93	12,232	28,980	41,305	77	13,453	30,046	43,576	78	12,990	1,487	30,711	45,266	98	15,428	1,605	5	31,148	48,284	108	17,315	1,697	6	32,812	51,938
Ethiopia	7,759	10,470	9,651	27,880	6,478	10,502	10,721	27,701	7,502	10,148	10,766	28,416	7,480	5,605	5,017	11,102	29,204	7,088	6,033	5,109	87	12,050	30,367	6,878	6,387	5,251	85	13,142	31,743
Burundi	83	10,134	2,611	12,828	65	10,020	3,237	13,322	72	11,235	3,791	15,098	64	9,437	2,791	4,228	16,520	65	12,114	2,729	6	4,239	19,153	62	13,711	2,577	6	4,844	21,200
Sudan	53	9,789	166	10,008	46	9,879	181	10,106	46	9,700	180	9,926	24	9,550	356	179	10,109	15	9,383	355	34	192	9,979	14	9,676	369	26	193	10,278
Uganda	57	1,705	720	2,482	65	1,501	846	2,412	70	1,623	906	2,499	72	1,234	445	875	2,626	75	1,657	486	9	859	3,086	75	1,990	538	12	919	3,534
Eritrea	8	60	1,273	1,341	4	192	1,607	1,803	4	34	1,793	1,831	4	40	1	1,851	1,896	4	36	1	11	2,149	2,201	4	59	1	11	2,393	2,468
Rwanda	16	611	1,015	1,642	11	612	1,117	1,740	7	652	1,129	1,788	8	634	64	1,165	1,871	9	748	66	-	1,166	1,989	10	813	71	-	1,242	2,136
Other	8	135	423	566	7	117	607	731	4	130	661	795	5	111	42	746	904	5	92	50	5	850	1,002	3	77	20	4	922	1,026

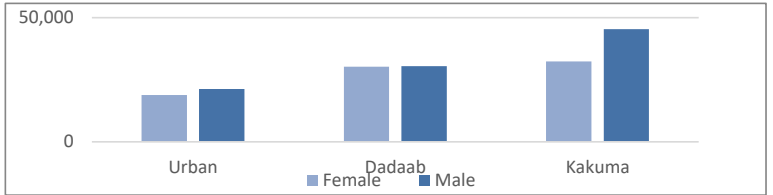


REFUGEES AND ASYLUM SEEKERS IN KENYA : DEMOGRAPHIC BREAKDOWN

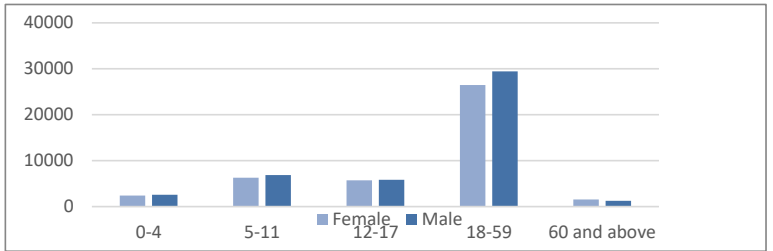
Total Kenya	Age Group	Sex				Total	
		Female		Male			
		#	%	#	%	#	%
	0-4	35,342	6.3%	37,275	6.7%	72,617	13.0%
	5-11	57,901	10.4%	61,856	11.1%	119,757	21.4%
	12-17	44,962	8.0%	52,587	9.4%	97,549	17.4%
	18-59	125,491	22.4%	128,525	23.0%	254,016	45.4%
	60 and above	8,418	1.5%	6,925	1.2%	15,343	2.7%
	Total	272,114	48.7%	287,168	51.3%	559,282	



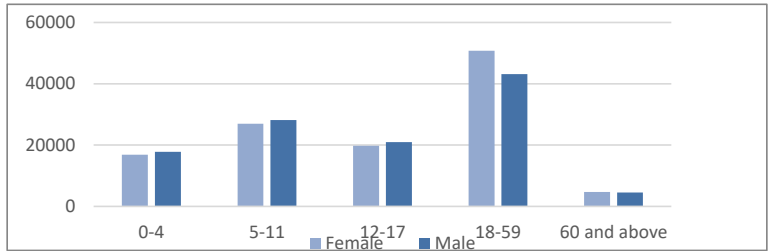
18 - 35 years	Site Name	Sex				Total	
		Female		Male			
		#	%	#	%	#	%
	Urban	18,853	10.6%	21,327	11.9%	40,180	22.5%
	Dadaab	30,248	16.9%	30,499	17.1%	60,747	34.0%
	Kakuma	32,383	18.1%	45,343	25.4%	77,726	43.5%
	Total	81,484	45.6%	97,169	54.4%	178,653	



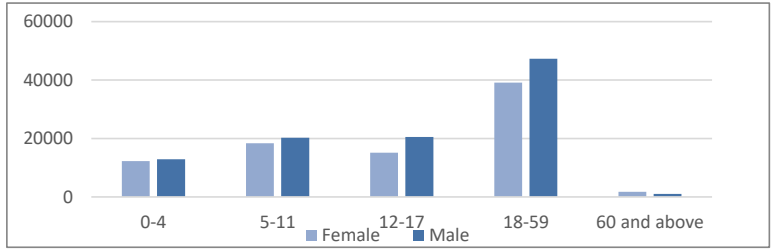
Urban (Nbi, Nak & Msa)	Age Group	Sex				Total	
		Female		Male			
		#	%	#	%	#	%
	0-4	2,434	2.8%	2,575	2.9%	5,009	5.7%
	5-11	6,306	7.1%	6,878	7.8%	13,184	14.9%
	12-17	5,703	6.4%	5,844	6.6%	11,547	13.1%
	18-59	26,484	29.9%	29,440	33.3%	55,924	63.2%
	60 and above	1,562	1.8%	1,239	1.4%	2,801	3.2%
	Total	42,489	48.0%	45,976	52.0%	88,465	



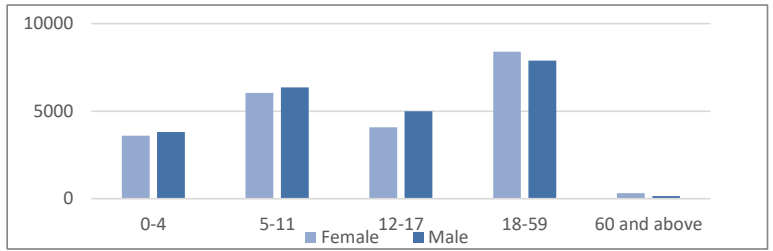
Dadaab Camp	Age Group	Sex				920	
		Female		Male		#	%
		#	%	#	%		
	0-4	16,894	7.2%	17,844	7.6%	34,738	14.9%
	5-11	26,932	11.5%	28,132	12.0%	55,064	23.6%
	12-17	19,759	8.5%	20,943	9.0%	40,702	17.4%
	18-59	50,794	21.7%	43,150	18.5%	93,944	40.2%
	60 and above	4,744	2.0%	4,544	1.9%	9,288	4.0%
	Total	119,123	51.0%	114,613	49.0%	233,736	



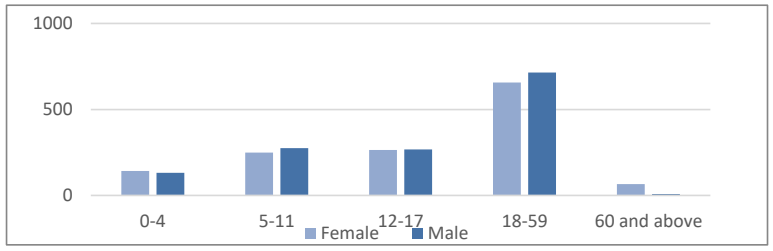
Kakuma Camp	Age Group	Sex				920	
		Female		Male		#	%
		#	%	#	%		
	0-4	12,276	6.5%	12,909	6.8%	25,185	13.3%
	5-11	18,379	9.7%	20,217	10.7%	38,596	20.5%
	12-17	15,160	8.0%	20,536	10.9%	35,696	18.9%
	18-59	39,160	20.8%	47,330	25.1%	86,490	45.8%
	60 and above	1,731	0.9%	985	0.5%	2,716	1.4%
	Total	86,706	46.0%	101,977	54.0%	188,683	



Kalobeyei Settlement	Age Group	Sex				Total	
		Female		Male		#	%
		#	%	#	%		
	0-4	3,596	1.9%	3,815	2.0%	7,411	16.2%
	5-11	6,035	3.2%	6,354	3.4%	12,389	27.2%
	12-17	4,076	2.2%	4,996	2.6%	9,072	19.9%
	18-59	8,396	4.4%	7,891	4.2%	16,287	35.7%
	60 and above	315	0.2%	149	0.1%	464	1.0%
	Total	22,418	49.1%	23,205	50.9%	45,623	



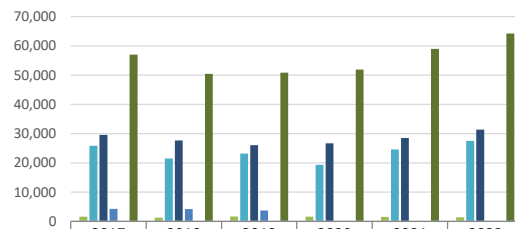
Urban (Eldoret)	Age Group	Sex				Total	
		Female		Male		#	%
		#	%	#	%		
	0-4	142	0.1%	132	0.1%	274	0.6%
	5-11	249	0.1%	275	0.1%	524	1.1%
	12-17	264	0.1%	268	0.1%	532	1.2%
	18-59	657	0.3%	714	0.4%	1,371	3.0%
	60 and above	66	0.0%	8	0.0%	74	0.2%
	Total	1,378	49.7%	1,397	50.3%	2,775	



ASYLUM SEEKERS STATISTICS BY COUNTRY OF ORIGIN AND LOCATION

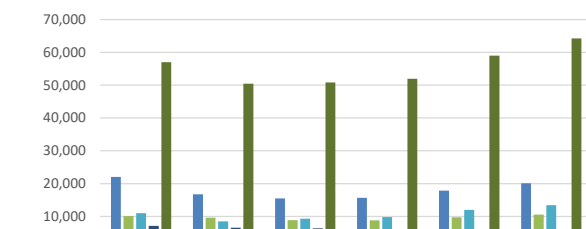
Country of Origin	2017				2018				2019				2020				2021				2022								
	Dadaab Camp	Kakuma Camp	Nairobi	Total	Dadaab Camp	Kakuma Camp	Nairobi	Total	Dadaab Camp	Kakuma Camp	Urban (Nbi, Nak & Msa)	Total	Dadaab Camp	Kakuma Camp	Kalobeyei Settlement	Urban (Nbi, Nak & Msa)	Total	Dadaab Camp	Kakuma Camp	Kalobeyei Settlement	Urban (Eldoret)	Urban (Nbi, Nak & Msa)	Total	Dadaab Camp	Kakuma Camp	Kalobeyei Settlement	Urban (Eldoret)	Urban (Nbi, Nak & Msa)	Total
Total	1,599	25,837	29,589	57,025	1,292	21,517	27,657	50,466	1,657	23,161	26,028	50,846	1,630	19,337	4,272	26,695	51,934	1,513	24,615	4,234	158	28,490	59,010	1,431	27,530	3,713	150	31,412	64,236
DR Congo	14	4,222	17,822	22,058	8	3,465	13,246	16,719	6	4,493	10,992	15,491	8	4,299	449	10,885	15,641	15	6,441	472	5	10,940	17,873	13	7,854	349	6	11,851	20,073
Ethiopia	1,129	3,786	5,177	10,092	881	3,286	5,419	9,586	1,199	3,162	4,503	8,864	1,220	1,869	1,103	4,570	8,762	1,072	2,167	1,124	87	5,270	9,720	1,019	2,282	1,024	85	6,125	10,535
Burundi	27	8,763	2175	10,965	22	6,239	2,189	8,450	30	6,878	2,415	9,323	29	6,038	1,921	2,773	9,761	26	7,346	1,778	6	2,794	11,950	26	8,596	1,472	6	3,336	13,436
Sudan	2	7,021	63	7,086	2	6,455	67	6,524	15	6,291	52	6,358	4	5,791	267	49	6,111	4	5,403	269	33	57	5,766	3	4,906	241	24	56	5,230
Somalia	364	214	2,119	2,697	330	310	4,180	4,820	340	587	5,572	6,499	350	935	16	5,837	7,138	376	1,311	26	2	6,461	8,176	351	1,555	24	2	6,664	8,596
Uganda	9	1,311	533	1,853	6	1,124	439	1,569	6	1,151	452	1,609	7	873	424	485	1,789	6	1,296	465	9	516	2,292	6	1,626	513	12	576	2,733
Eritrea	2	15	632	649	2	158	936	1,096	2	10	950	962	2	14	1	991	1,008	2	22	1	11	1,263	1,299	2	41	1	11	1,494	1,549
Rwanda	13	400	663	1,076	7	404	681	1,092	7	465	584	1,056	8	440	64	615	1,127	9	537	65	-	612	1,223	9	580	70	-	682	1,341
Other	4	105	339	448	3	70	453	526	1	79	461	541	2	70	25	444	541	2	47	31	5	529	614	-	61	16	4	580	661
South Sudan	35	-	66	101	31	6	47	84	51	45	47	143	-	8	2	46	56	1	45	3	-	48	97	2	29	3	-	48	82

TREND BY LOCATION



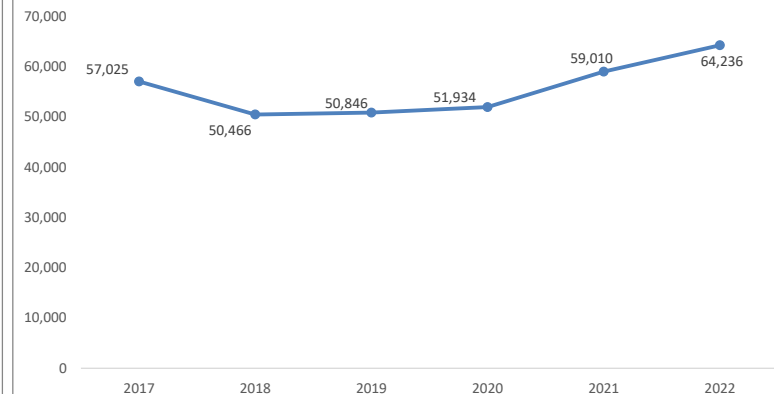
	2017	2018	2019	2020	2021	2022
Dadaab Camp	1,599	1,292	1,657	1,630	1,513	1,431
Kakuma Camp	25,837	21,517	23,161	19,337	24,615	27,530
Urban (Nbi, Nak & Msa)	29,589	27,657	26,028	26,695	28,490	31,412
Kalobeyei Settlement	4,272	4,234	3,713			
Urban (Eldoret)		158	150			
Total	57,025	50,466	50,846	51,934	59,010	64,236

TREND BY MAJOR COUNTRIES OF ORIGIN



	2017	2018	2019	2020	2021	2022
DR Congo	22,058	16,719	15,491	15,641	17,873	20,073
Ethiopia	10,092	9,586	8,864	8,762	9,720	10,535
Burundi	10,965	8,450	9,323	9,761	11,950	13,436
Sudan	7,086	6,524	6,358	6,111	5,766	5,230
Urban (Eldoret)						
Total	57,025	50,466	50,846	51,934	59,010	64,236

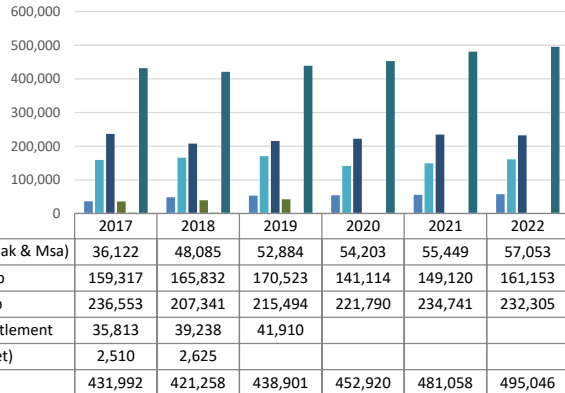
FIVE YEAR POPULATION TREND



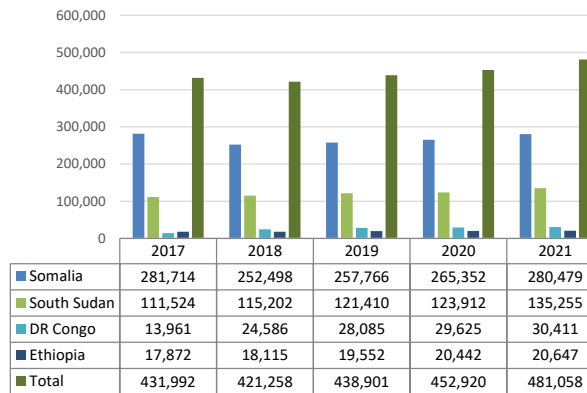
REFUGEES IN KENYA BY COUNTRY OF ORIGIN AND LOCATION

Country of Origin	2017				2018				2019				2020					2021					2022						
	Dadaab Camp	Kakuma Camp	Nairobi	Total	Dadaab Camp	Kakuma Camp	Nairobi	Total	Dadaab Camp	Kakuma Camp	Urban (Nbi, Nak & Msa)	Total	Dadaab Camp	Kakuma Camp	Kalobeyei Settlement	Urban (Nbi, Nak & Msa)	Total	Dadaab Camp	Kakuma Camp	Kalobeyei Settlement	Urban (Eldoret)	Urban (Nbi, Nak & Msa)	Total	Dadaab Camp	Kakuma Camp	Kalobeyei Settlement	Urban (Eldoret)	Urban (Nbi, Nak & Msa)	Total
Total	236,553	159,317	36,122	431,992	207,341	165,832	48,085	421,258	215,494	170,523	52,884	438,901	221,790	141,114	35,813	54,203	452,920	234,741	149,120	39,238	2,510	55,449	481,058	232,305	161,153	41,910	2,625	57,053	495,046
Somalia	228,700	35,335	17,679	281,714	200,556	33,534	18,408	252,498	208,091	34,033	15,642	257,766	214,710	34,808	88	15,746	265,352	227,878	36,101	91	57	16,352	280,479	225,615	36,800	96	57	16,749	279,317
South Sudan	955	105,168	5,401	111,524	947	108,444	5,811	115,202	887	112,144	8,379	121,410	625	85,099	29,776	8,412	123,912	640	90,787	32,951	2,452	8,425	135,255	614	100,271	34,976	2,566	8,537	146,964
DR Congo	100	7,311	6,550	13,961	85	8,767	15,734	24,586	71	8,960	19,054	28,085	70	8,691	1,038	19,826	29,625	83	8,987	1,133	0	20,208	30,411	95	9,461	1,348	0	20,961	31,865
Ethiopia	6,630	6,684	4,558	17,872	5,597	7,216	5,302	18,115	6,303	6,966	6,263	19,552	6,260	3,736	3,914	6,532	20,442	6,016	3,866	3,985	0	6,780	20,647	5,859	4,105	4,227	0	7,017	21,208
Burundi	56	1,371	478	1,905	43	3,781	1,048	4,872	42	4,357	1,376	5,775	35	4,399	870	1,455	6,759	39	4,768	951	0	1,445	7,203	36	5,115	1,105	0	1,508	7,764
Sudan	51	2,768	105	2,924	44	3,424	114	3,582	31	3,409	128	3,568	20	3,759	89	130	3,998	11	3,980	86	1	135	4,213	11	4,770	128	2	137	5,048
Uganda	48	394	192	634	59	377	407	843	64	372	454	890	65	361	21	390	837	69	361	21	0	343	794	69	364	25	0	343	801
Eritrea	6	45	657	708	2	34	671	707	2	24	843	869	2	26	0	860	888	2	14	0	0	886	902	2	18	0	0	899	919
Rwanda	3	211	372	586	4	208	436	648	0	187	545	732	0	194	0	550	744	0	211	1	0	554	766	1	233	1	0	560	795
Other	4	30	130	164	4	47	154	205	3	51	200	254	3	41	17	302	363	3	45	19	0	321	388	3	16	4	0	342	365

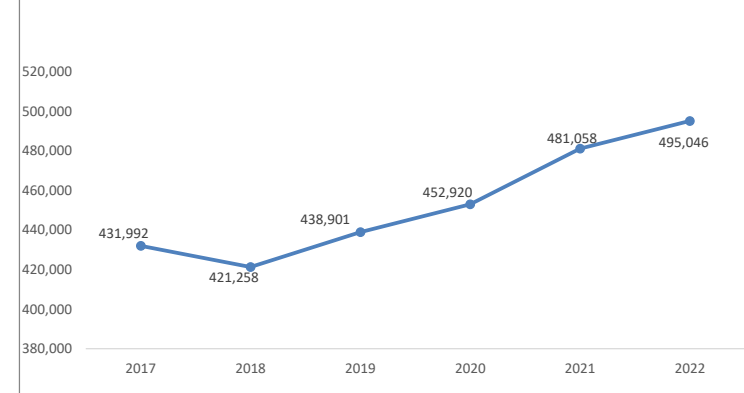
TREND BY LOCATION



TREND BY MAJOR COUNTRIES OF ORIGIN



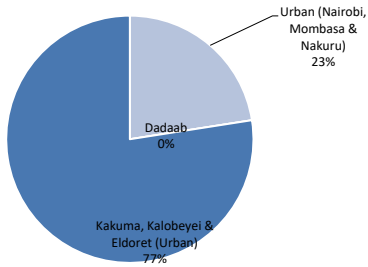
FIVE YEAR POPULATION TREND



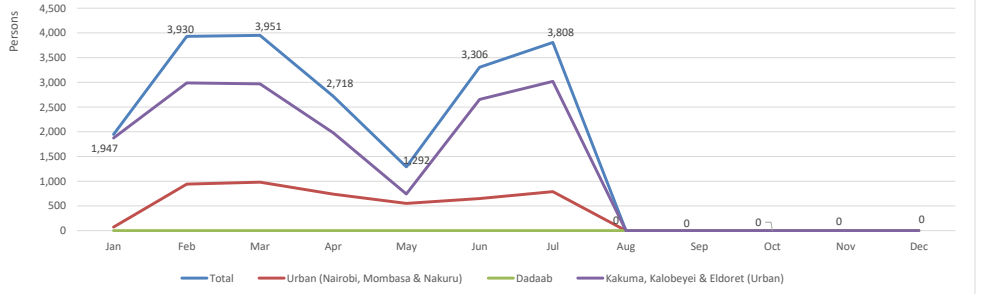
KENYA REGISTRATION TREND BY LOCATION AND COUNTRY OF ORIGIN

	Month	Total	Country of Origin																											
			AFG	ANG	BDI	BKF	CAR	COB	COD	CMR	ERT	ETH	ICO	LBR	NIG	RSA	RWA	SLE	SOM	SSD	SUD	SYR	TAN	TIB	TUR	UGA	YEM	ZIM	OTHER	
Total Kenya	Jan	1,947	-	-	522	-	-	-	272	-	1	65	-	-	-	-	4	-	196	823	28	-	-	-	-	35	1	-	-	
	Feb	3,930	6	-	708	-	-	6	731	3	56	317	-	-	-	-	43	-	444	1,471	53	-	-	-	1	87	2	-	2	
	Mar	3,951	-	-	352	-	-	-	849	-	71	343	-	-	-	-	31	-	193	1,978	33	-	17	-	1	80	3	-	-	
	Apr	2,718	12	-	267	-	-	-	504	-	31	249	-	-	-	-	15	-	80	1,433	32	-	2	-	-	91	1	-	-	
	May	1,292	-	-	162	-	-	2	348	-	43	132	-	-	-	-	20	-	166	382	14	-	-	-	1	21	1	-	-	
	Jun	3,306	14	-	261	-	-	-	511	-	20	175	-	-	-	-	15	-	49	2,144	42	-	2	-	-	67	6	-	-	
	Jul	3,808	4	-	386	-	-	-	637	-	28	245	3	-	-	-	22	-	166	2,202	48	-	2	-	-	63	1	-	1	
	Aug	0	-	-	-	-	-	-	-	-	-	-	-	-	-	-	-	-	-	-	-	-	-	-	-	-	-	-	-	-
	Sep	0	-	-	-	-	-	-	-	-	-	-	-	-	-	-	-	-	-	-	-	-	-	-	-	-	-	-	-	-
	Oct	0	-	-	-	-	-	-	-	-	-	-	-	-	-	-	-	-	-	-	-	-	-	-	-	-	-	-	-	-
	Nov	0	-	-	-	-	-	-	-	-	-	-	-	-	-	-	-	-	-	-	-	-	-	-	-	-	-	-	-	-
	Dec	0	-	-	-	-	-	-	-	-	-	-	-	-	-	-	-	-	-	-	-	-	-	-	-	-	-	-	-	-
	Total	20,952	36	0	2,658	0	2	7	3,852	3	250	1,526	3	0	0	0	150	0	1,294	10,433	250	0	23	0	3	444	15	0	3	
Urban (Nairobi, Mombasa & Nakuru)	Jan	71	-	-	1	-	-	-	43	-	1	9	-	-	-	-	-	16	1	-	-	-	-	-	-	-	-	-	-	
	Feb	942	6	-	74	-	-	2	337	3	50	193	-	-	-	-	21	-	248	2	-	-	-	-	1	2	1	-	2	
	Mar	981	-	-	111	-	-	-	395	-	67	276	-	-	-	-	22	-	45	34	1	-	11	-	1	15	3	-	-	
	Apr	738	12	-	99	-	-	-	261	-	31	208	-	-	-	-	14	-	27	51	-	-	1	-	-	33	1	-	-	
	May	551	-	-	83	-	2	-	248	-	43	101	-	-	-	-	15	-	21	22	-	-	-	-	1	14	1	-	-	
	Jun	651	14	-	160	-	-	-	255	-	20	133	-	-	-	-	11	-	17	21	-	-	1	-	-	13	6	-	-	
	Jul	788	4	-	121	-	-	-	347	-	28	165	3	-	-	-	14	-	24	68	2	-	-	-	-	10	1	-	1	
	Aug	0	-	-	-	-	-	-	-	-	-	-	-	-	-	-	-	-	-	-	-	-	-	-	-	-	-	-	-	-
	Sep	0	-	-	-	-	-	-	-	-	-	-	-	-	-	-	-	-	-	-	-	-	-	-	-	-	-	-	-	-
	Oct	0	-	-	-	-	-	-	-	-	-	-	-	-	-	-	-	-	-	-	-	-	-	-	-	-	-	-	-	-
	Nov	0	-	-	-	-	-	-	-	-	-	-	-	-	-	-	-	-	-	-	-	-	-	-	-	-	-	-	-	-
	Dec	0	-	-	-	-	-	-	-	-	-	-	-	-	-	-	-	-	-	-	-	-	-	-	-	-	-	-	-	-
	Total	4,722	36	0	649	0	2	2	1,886	3	240	1,085	3	0	0	0	97	0	398	199	3	0	13	0	3	87	13	0	3	
Dadaab	Jan	0	-	-	-	-	-	-	-	-	-	-	-	-	-	-	-	-	-	-	-	-	-	-	-	-	-	-	-	
	Feb	0	-	-	-	-	-	-	-	-	-	-	-	-	-	-	-	-	-	-	-	-	-	-	-	-	-	-	-	
	Mar	0	-	-	-	-	-	-	-	-	-	-	-	-	-	-	-	-	-	-	-	-	-	-	-	-	-	-	-	
	Apr	0	-	-	-	-	-	-	-	-	-	-	-	-	-	-	-	-	-	-	-	-	-	-	-	-	-	-	-	
	May	0	-	-	-	-	-	-	-	-	-	-	-	-	-	-	-	-	-	-	-	-	-	-	-	-	-	-	-	
	Jun	0	-	-	-	-	-	-	-	-	-	-	-	-	-	-	-	-	-	-	-	-	-	-	-	-	-	-	-	
	Jul	0	-	-	-	-	-	-	-	-	-	-	-	-	-	-	-	-	-	-	-	-	-	-	-	-	-	-	-	
	Aug	0	-	-	-	-	-	-	-	-	-	-	-	-	-	-	-	-	-	-	-	-	-	-	-	-	-	-	-	-
	Sep	0	-	-	-	-	-	-	-	-	-	-	-	-	-	-	-	-	-	-	-	-	-	-	-	-	-	-	-	-
	Oct	0	-	-	-	-	-	-	-	-	-	-	-	-	-	-	-	-	-	-	-	-	-	-	-	-	-	-	-	-
	Nov	0	-	-	-	-	-	-	-	-	-	-	-	-	-	-	-	-	-	-	-	-	-	-	-	-	-	-	-	-
	Dec	0	-	-	-	-	-	-	-	-	-	-	-	-	-	-	-	-	-	-	-	-	-	-	-	-	-	-	-	-
	Total	0	0	0	0	0	0	0	0	0	0	0	0	0	0	0	0	0	0	0	0	0	0	0	0	0	0	0	0	0
Kakuma, Kalobeyei & Eldoret (Urban)	Jan	1,876	-	-	521	-	-	-	229	-	-	56	-	-	-	4	-	180	822	28	-	-	-	-	35	1	-	-		
	Feb	2,988	-	-	634	-	-	4	394	-	6	124	-	-	-	22	-	196	1,469	53	-	-	-	-	85	1	-	-		
	Mar	2,970	-	-	241	-	-	-	454	-	4	67	-	-	-	9	-	148	1,944	32	-	6	-	-	65	-	-	-		
	Apr	1,980	-	-	168	-	-	1	243	-	-	41	-	-	-	1	-	53	1,382	32	-	1	-	-	58	-	-	-		
	May	741	-	-	79	-	-	-	100	-	-	31	-	-	-	5	-	145	360	14	-	-	-	-	7	-	-	-		
	Jun	2,655	-	-	101	-	-	-	256	-	-	42	-	-	-	4	-	32	2,123	42	-	1	-	-	54	-	-	-		
	Jul	3,020	-	-	265	-	-	-	290	-	-	80	-	-	-	8	-	142	2,134	46	-	2	-	-	53	-	-	-		
	Aug	0	-	-	-	-	-	-	-	-	-	-	-	-	-	-	-	-	-	-	-	-	-	-	-	-	-	-	-	
	Sep	0	-	-	-	-	-	-	-	-	-	-	-	-	-	-	-	-	-	-	-	-	-	-	-	-	-	-	-	-
	Oct	0	-	-	-	-	-	-	-	-	-	-	-	-	-	-	-	-	-	-	-	-	-	-	-	-	-	-	-	-
	Nov	0	-	-	-	-	-	-	-	-	-	-	-	-	-	-	-	-	-	-	-	-	-	-	-	-	-	-	-	-
	Dec	0	-	-	-	-	-	-	-	-	-	-	-	-	-	-	-	-	-	-	-	-	-	-	-	-	-	-	-	-
	Total	16,230	0	0	2,009	0	0	5	1,966	0	10	441	0	0	0	53	0	896	10,234	247	0	10	0	0	357	2	0	0	0	

Registration Distribution by Location

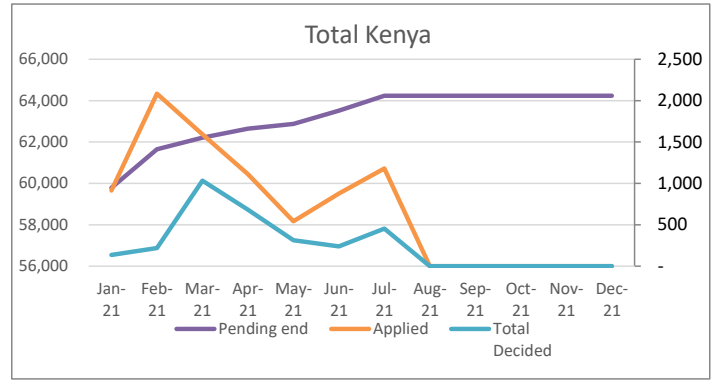


Monthly Registration Trend 2022

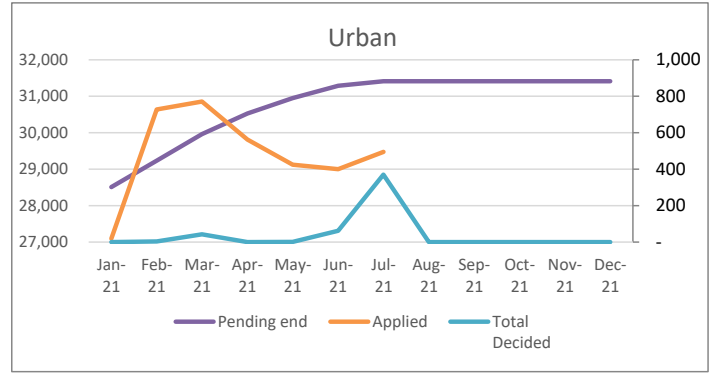


Individual Asylum Applications and Refugee Status Determination Trend

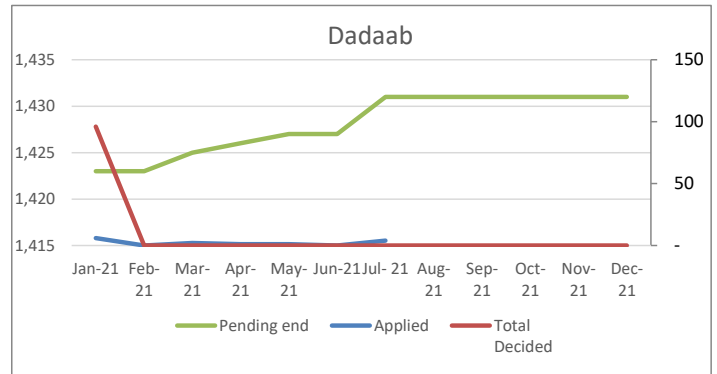
Total	Month	Pending begin	Applied	Reco-gnized	Reje-cted	Oth. Closed	Total Decided	Pending end
	Jan-21	59,010	913	32	-	103	135	59,788
	Feb-21	59,788	2,084	206	-	14	220	61,652
	Mar-21	61,652	1,592	996	-	37	1,033	62,211
	Apr-21	62,211	1,113	670	-	11	681	62,643
	May-21	62,643	542	102	-	211	313	62,872
	Jun-21	62,872	876	133	-	105	238	63,510
	Jul-21	63,510	1,179	440	-	13	453	64,236
	Aug-21	64,236	-	-	-	-	-	64,236
	Sep-21	64,236	-	-	-	-	-	64,236
	Oct-21	64,236	-	-	-	-	-	64,236
	Nov-21	64,236	-	-	-	-	-	64,236
	Dec-21	64,236	-	-	-	-	-	64,236
Total		8,299	2,579	-	494	3,073		



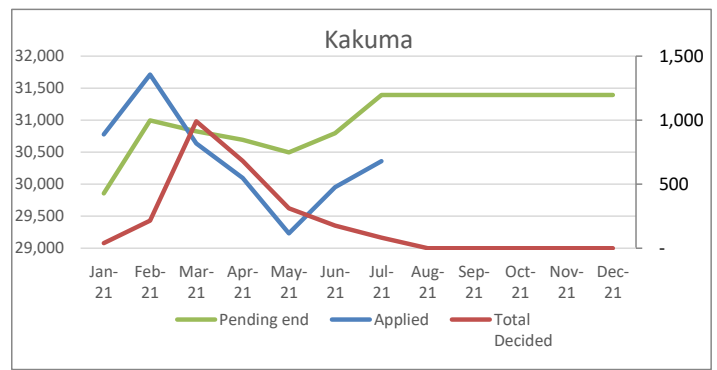
Urban	Month	Pending begin	Applied	Reco-gnized	Reje-cted	Oth. Closed	Total Decided	Pending end
	Jan-21	28,490	19	-	-	-	-	28,509
	Feb-21	28,509	728	4	-	-	4	29,233
	Mar-21	29,233	771	31	-	11	42	29,962
	Apr-21	29,962	563	-	-	-	-	30,525
	May-21	30,525	425	1	-	-	1	30,949
	Jun-21	30,949	400	62	-	-	62	31,287
	Jul-21	31,287	495	370	-	-	370	31,412
	Aug-21	31,412	-	-	-	-	-	31,412
	Sep-21	31,412	-	-	-	-	-	31,412
	Oct-21	31,412	-	-	-	-	-	31,412
	Nov-21	31,412	-	-	-	-	-	31,412
	Dec-21	31,412	-	-	-	-	-	31,412
Total		3,401	468	-	11	479		



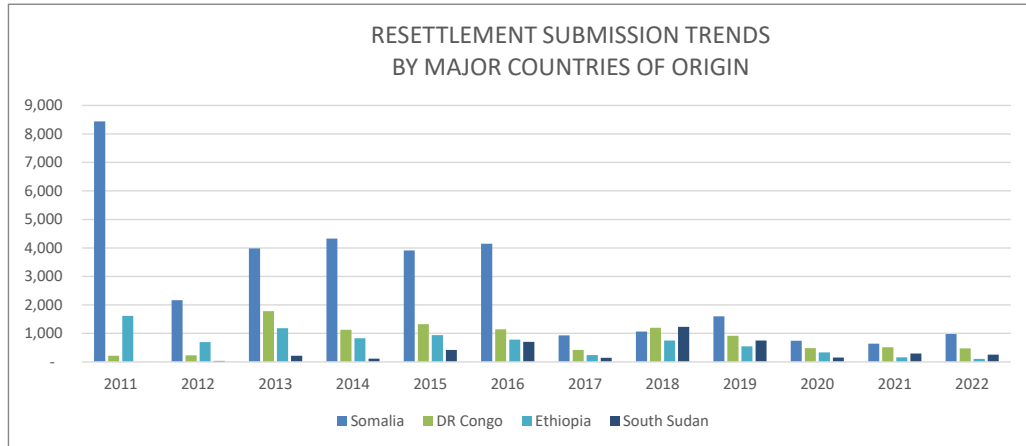
Dadaab	Month	Pending begin	Applied	Reco-gnized	Reje-cted	Oth. Closed	Total Decided	Pending end
	Jan-21	1,513	6	-	-	96	96	1,423
	Feb-21	1,423	-	-	-	-	-	1,423
	Mar-21	1,423	2	-	-	-	-	1,425
	Apr-21	1,425	1	-	-	-	-	1,426
	May-21	1,426	1	-	-	-	-	1,427
	Jun-21	1,427	-	-	-	-	-	1,427
	Jul-21	1,427	4	-	-	-	-	1,431
	Aug-21	1,431	-	-	-	-	-	1,431
	Sep-21	1,431	-	-	-	-	-	1,431
	Oct-21	1,431	-	-	-	-	-	1,431
	Nov-21	1,431	-	-	-	-	-	1,431
	Dec-21	1,431	-	-	-	-	-	1,431
Total		14	-	-	96	96		



Kakuma, Kalobeyei & Eldoret	Month	Pending begin	Applied	Reco-gnized	Reje-cted	Oth. Closed	Total Decided	Pending end
	Jan-21	29,007	888	32	-	7	39	29,856
	Feb-21	29,856	1,356	202	-	14	216	30,996
	Mar-21	30,996	819	965	-	26	991	30,824
	Apr-21	30,824	549	670	-	11	681	30,692
	May-21	30,692	116	101	-	211	312	30,496
	Jun-21	30,496	476	71	-	105	176	30,796
	Jul-21	30,796	680	70	-	13	83	31,393
	Aug-21	31,393	-	-	-	-	-	31,393
	Sep-21	31,393	-	-	-	-	-	31,393
	Oct-21	31,393	-	-	-	-	-	31,393
	Nov-21	31,393	-	-	-	-	-	31,393
	Dec-21	31,393	-	-	-	-	-	31,393
Total		4,884	2,111	-	387	2,498		

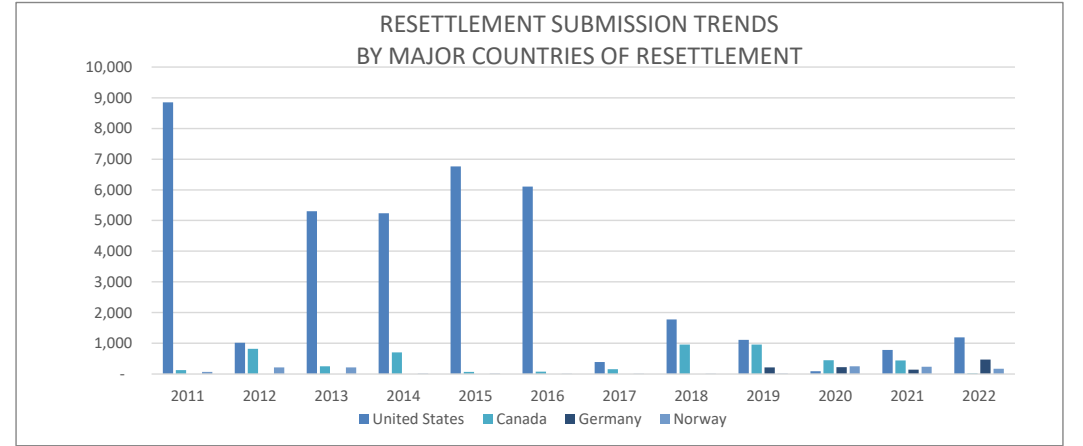


RESETTLEMENT SUBMISSION BY COUNTRY OF ORIGIN													
Country of Origin	2011	2012	2013	2014	2015	2016	2017	2018	2019	2020	2021	2022	Total
Somalia	8,439	2,170	3,985	4,325	3,909	4,147	929	1,068	1,600	740	643	976	32,931
DR Congo	218	230	1,783	1,132	1,326	1,143	424	1,203	916	484	519	473	9,851
Ethiopia	1,617	700	1,181	830	941	785	237	748	549	337	159	106	8,190
South Sudan	-	33	214	111	420	701	143	1,229	753	152	296	256	4,308
Sudan	175	30	29	158	541	104	4	34	3	2	10	6	1,096
Uganda	13	5	24	88	108	107	47	136	191	12	6	9	746
Burundi	17	22	58	46	121	81	100	121	104	60	54	43	827
Eritrea	25	20	111	73	116	55	26	39	36	12	2	9	524
Rwanda	13	24	22	31	78	26	10	17	15	10	6	6	258
Other	1	5	5	11	26	14	20	16	10	11	1	6	126
Total	10,518	3,239	7,412	6,805	7,586	7,163	1,940	4,611	4,177	1,820	1,696	1,890	58,857



*RST submissions as of end of June 2022

RESETTLEMENT SUBMISSION BY COUNTRY OF RESETTLEMENT													
Country of Submission	2011	2012	2013	2014	2015	2016	2017	2018	2019	2020	2021	2022	Total
United States	8,849	1,019	5,304	5,239	6,764	6,105	391	1,775	1,115	90	788	1,192	38,631
Australia	281	50	932	53	107	310	736	1,438	885	281	16	10	5,099
Canada	129	821	254	705	69	75	158	963	958	451	443	20	5,046
Germany	-	-	-	-	-	-	-	-	217	226	142	472	1,057
United Kingdom	657	585	155	363	378	397	180	243	297	251	5	3	3,514
Sweden	391	402	342	397	81	262	353	120	662	38	8	2	3,058
Norway	72	218	218	12	11	5	6	1	11	249	240	172	1,215
Netherlands	109	114	145	16	130	-	-	-	7	138	40	13	712
France	-	-	29	-	-	1	88	46	11	47	10	6	238
Other	30	30	33	20	46	8	28	25	14	49	4	-	287
Total	10,518	3,239	7,412	6,805	7,586	7,163	1,940	4,611	4,177	1,820	1,696	1,890	58,857



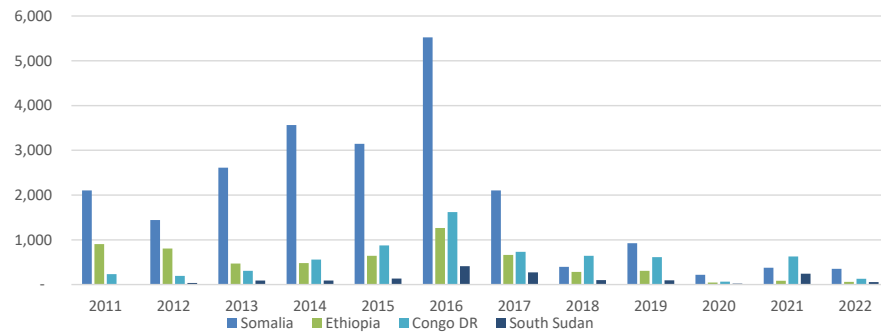
RESETTLEMENT DEPARTURES BY COUNTRY OF ORIGIN

Country of Origin	2011	2012	2013	2014	2015	2016	2017	2018	2019	2020	2021	2022	Total
Somalia	2,102	1,442	2,612	3,562	3,142	5,521	2,102	398	924	220	375	352	22,752
Ethiopia	906	806	469	480	645	1,265	663	282	309	45	87	62	6,019
Congo DR	234	192	308	560	874	1,621	730	643	611	64	630	130	6,597
South Sudan	-	35	88	92	136	412	272	100	94	19	245	56	1,549
Sudan	213	102	61	82	46	123	184	9	30	5	35	26	916
Eritrea	48	25	25	57	28	121	62	21	18	4	16	11	436
Burundi	35	14	13	23	30	70	50	81	133	22	54	14	539
Uganda	7	14	2	36	69	70	50	73	63	60	64	8	516
Rwanda	35	26	26	21	28	56	24	28	13	7	9	4	277
Other	1	3	-	-	3	27	4	6	26	12	2	-	84
Total	3,581	2,659	3,604	4,913	5,001	9,286	4,141	1,641	2,221	458	1,517	663	39,685

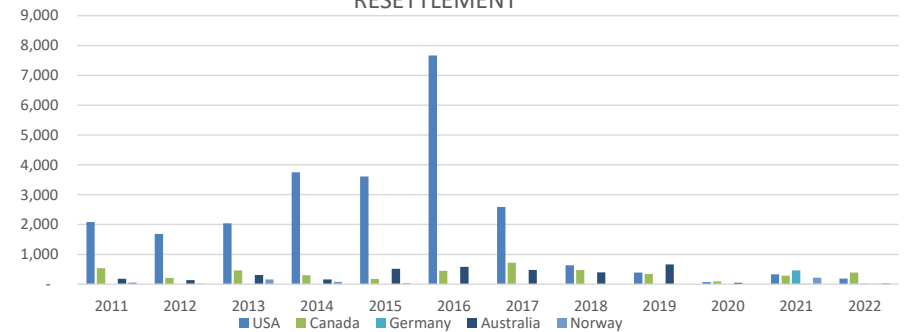
RESETTLEMENT DEPARTURES BY COUNTRY OF RESETTLEMENT

Country of Resettlement	2011	2012	2013	2014	2015	2016	2017	2018	2019	2020	2021	2022	Total
USA	2,083	1,688	2,040	3,751	3,610	7,665	2,585	633	392	74	329	190	25,040
Canada	541	213	464	302	174	452	725	480	347	93	283	386	4,460
Germany	-	-	-	-	-	-	-	-	-	-	460	21	481
Australia	182	141	311	160	514	580	475	398	666	49	14	13	3,503
United Kingdom	208	460	260	279	308	267	248	111	163	19	2	3	2,328
Sweden	329	88	331	229	341	238	83	4	596	201	131	-	2,571
Norway	58	18	159	78	32	3	7	-	2	-	219	37	613
Netherlands	81	29	-	87	2	70	-	-	5	-	30	5	309
France	-	-	-	-	-	-	1	5	25	9	26	8	74
Other	99	22	39	27	20	11	17	10	25	13	23	-	306
Total	3,581	2,659	3,604	4,913	5,001	9,286	4,141	1,641	2,221	458	1,517	663	39,685

RESETTLEMENT DEPARTURE TRENDS BY MAJOR COUNTRIES OF ORIGIN



RESETTLEMENT DEPARTURE TRENDS BY MAJOR COUNTRIES OF RESETTLEMENT



*RST departures as of end of June 2022.

**VOLUNTARY REPATRIATION FROM KENYA
BY COUNTRY OF ORIGIN**

Country of Origin	Year														
	2009	2010	2011	2012	2013	2014	2015	2016	2017	2018	2019	2020	2021	2022	Total
Sudan	665	64	28	-	-	-	-	-	-	-	-	-	-	-	757
Burundi	2	1	-	4	-	-	-	-	-	586	156	60	1,024	795	2,628
Rwanda	1	2	2	1	-	-	-	-	-	-	-	-	-	-	6
Mozambique	-	5	-	-	-	-	-	-	4	-	-	-	-	-	9
Somalia	-	6	69	4	-	481	5,614	33,792	35,409	7,543	2,142	190	294	310	85,854
Congo, DRC	-	3	2	7	3	-	-	-	-	-	15	-	11	1	42
Ethiopia	-	-	-	-	-	-	-	-	-	1,963	5	79	761	-	2,808
Uganda	-	-	4	1	-	-	-	-	-	-	-	-	3	-	8
Other	-	2	6	-	-	-	-	6	-	1	19	-	-	-	34
Total	668	83	111	17	3	481	5,614	33,798	35,413	10,093	2,337	329	2,093	1,106	92,146

VolRepTrend

