

**321,757**  
REFUGEES AND ASYLUM-SEEKERS  
IN NEIGHBOURING COUNTRIES

**87,429**  
REFUGEES AND ASYLUM-SEEKERS  
HOSTED IN BURUNDI

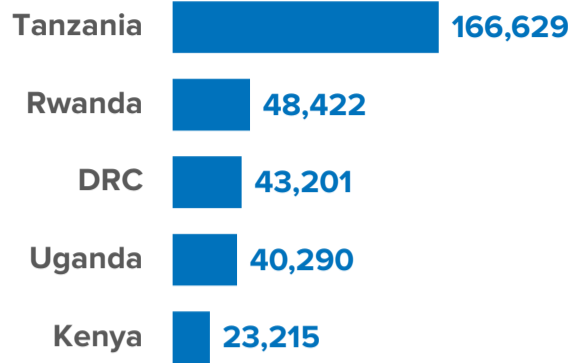
**206,121**  
REFUGEE RETURNEES SINCE 2017

**20,348**  
REFUGEE RETURNEES IN 2022

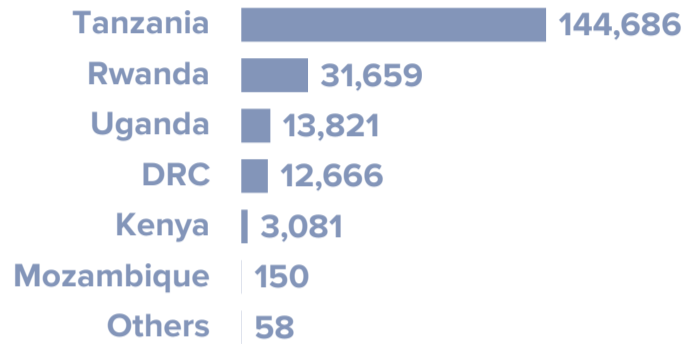
**7,600\***  
INTERNALLY DISPLACED IN  
BURUNDI

\*The 7600 IDP figure refers to the IDPs of concern to UNHCR. This figure has been revised down from the total 83,588 IDPs reported in Burundi (IOM/DTM), the majority who are displaced due to natural disasters

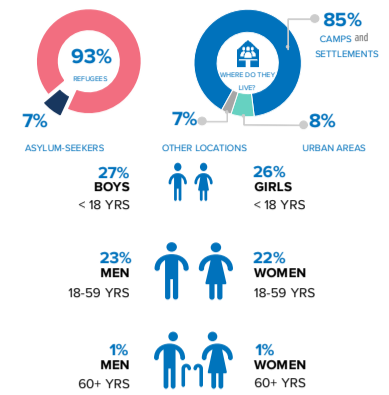
**BURUNDIAN REFUGEES AND ASYLUM SEEKERS  
BY COUNTRY OF ASYLUM**



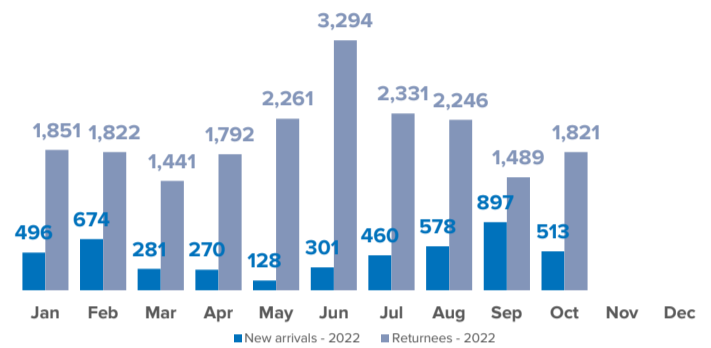
**RETURNEES SINCE 2017 BY COUNTRY OF ASYLUM**



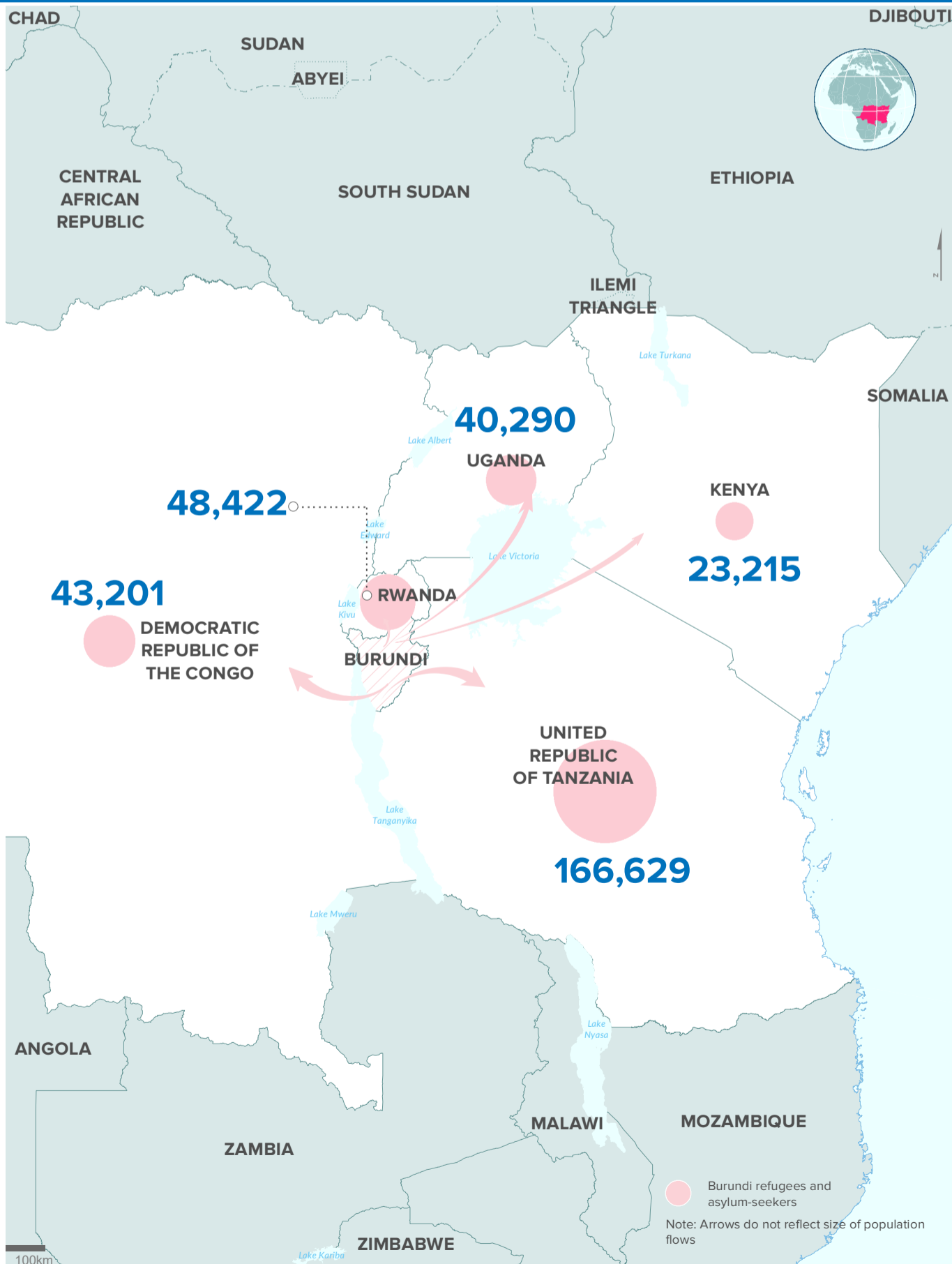
**KEY POPULATION STATISTICS  
BURUNDIAN REFUGEES AND ASYLUM-SEEKERS**



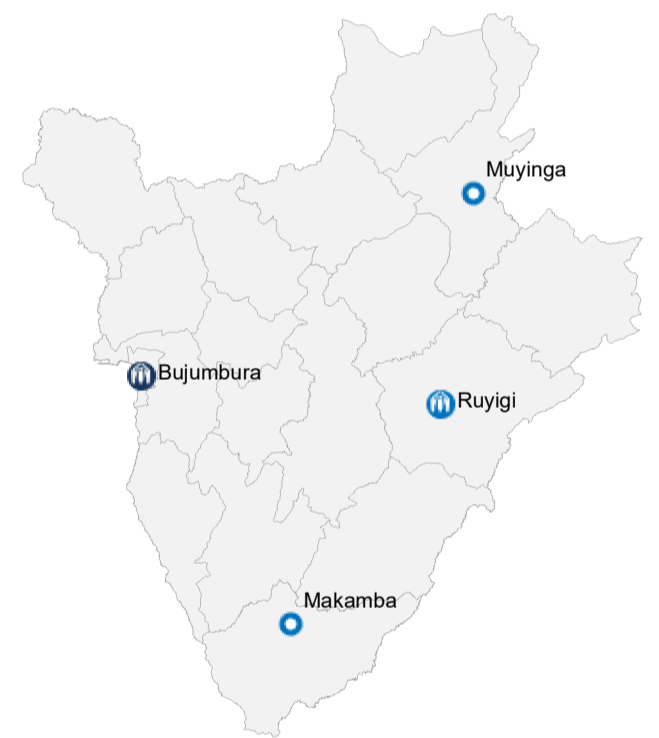
**NEW ARRIVALS AND RETURNEES BY MONTH | 2022**



**Burundians displaced into neighbouring countries**

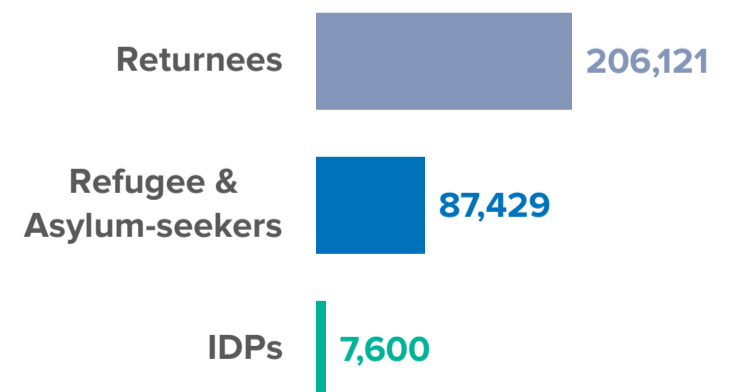


**Population of concern to UNHCR in Burundi**



**301,150**

Total population of concern  
in Burundi as of October 2022.



By the end of October 2022, Burundi was host to 301,150 persons of concern. This includes 206,121 returnees mainly from Tanzania, Rwanda, DRC and Uganda and a further 87,429 refugees and asylum-seekers, as well as 7,600 IDPs.

The boundaries and names shown and the designations used on this map do not imply official endorsement or acceptance by the United Nations. Final boundaries between the Republic of Sudan and the Republic of South Sudan and Somalia and Ethiopia have not yet been determined. Final status of the Abyei area is not yet determined.