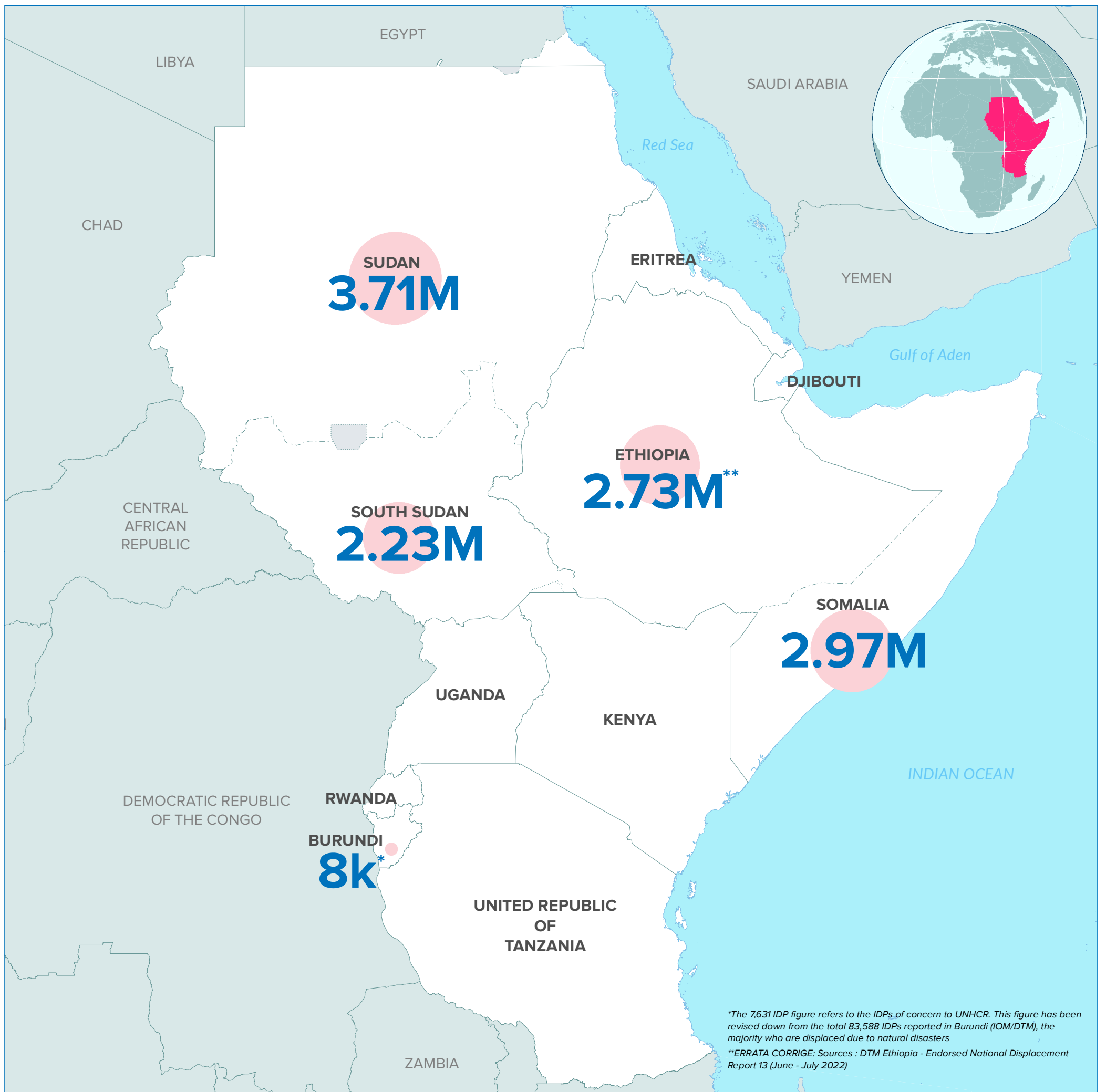
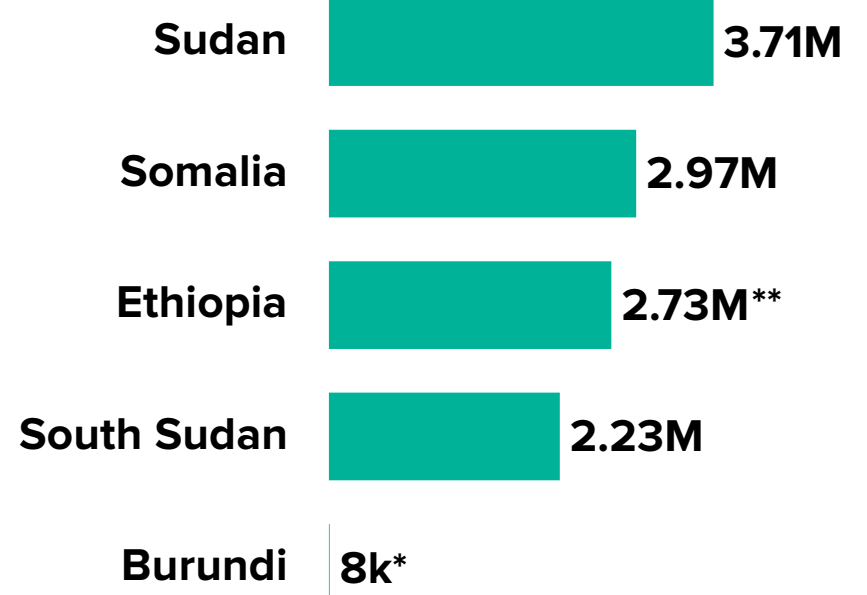
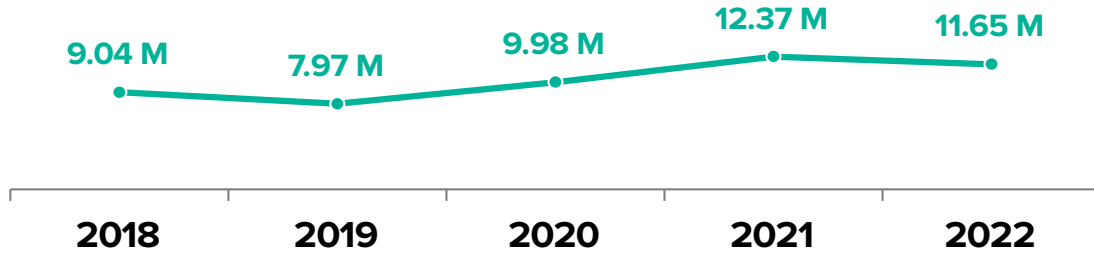




# → 11.65M

## INTERNALLY DISPLACED PERSONS (IDPS)

Annual Trend of displacement | IDPs



\*The 7,631 IDP figure refers to the IDPs of concern to UNHCR. This figure has been revised down from the total 83,588 IDPs reported in Burundi (IOM/DTM), the majority who are displaced due to natural disasters  
\*\*ERRATA CORRIGE: Sources : DTM Ethiopia - Endorsed National Displacement Report 13 (June - July 2022)

The boundaries and names shown and the designations used on this map do not imply official endorsement or acceptance by the United Nations. Final boundaries between the Republic of Sudan and the Republic of South Sudan and Somalia and Ethiopia has not yet been determined. \*Final status of the Abyei area is not yet determined

The statistics shown should be considered provisional and subject to change. Refugee statistics based on UNHCR Monthly statistical reports as of 31 October 2022, or latest available. IDP Statistics from OCHA, IOM/DTM, Government reports

Printing date: 22 Feb 2023 Sources: Boundaries - UNCS. Statistics - UNHCR, OCHA, IOM, Governments. Author: UNHCR Regional Bureau for East, Horn of Africa and the Great Lakes region Feedback: DIMAEHAGL@unhcr.org