

Overview of Refugee and Asylum-Seekers Population

(as of 30 September 2022)

1.33 MILLION approx

TOTAL REGISTERED PERSONS OF CONCERN



68.5%
OUTSIDE REFUGEE VILLAGES

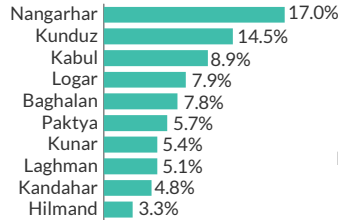


31.4%*
LIVING IN REFUGEE VILLAGES

1.29 MILLION approx

AFGHAN (PoR) CARD HOLDERS

% PLACE OF ORIGIN (TOP 10)

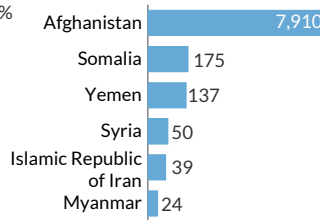


19.7% From other regions

8,429

REGISTERED REFUGEES UNDER UNHCR'S MANDATE

COUNTRY OF ORIGIN

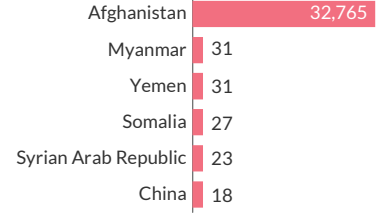


94 From other countries

32,946

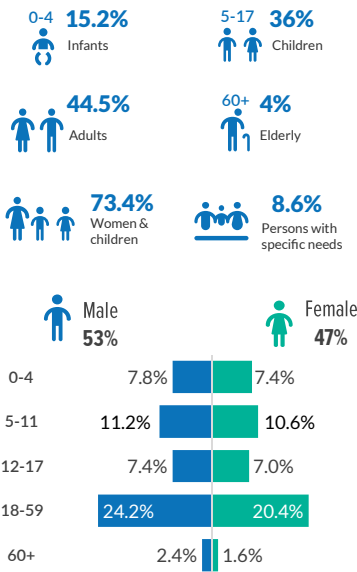
REGISTERED ASYLUM SEEKERS UNDER UNHCR'S MANDATE

COUNTRY OF ORIGIN



51 From other countries

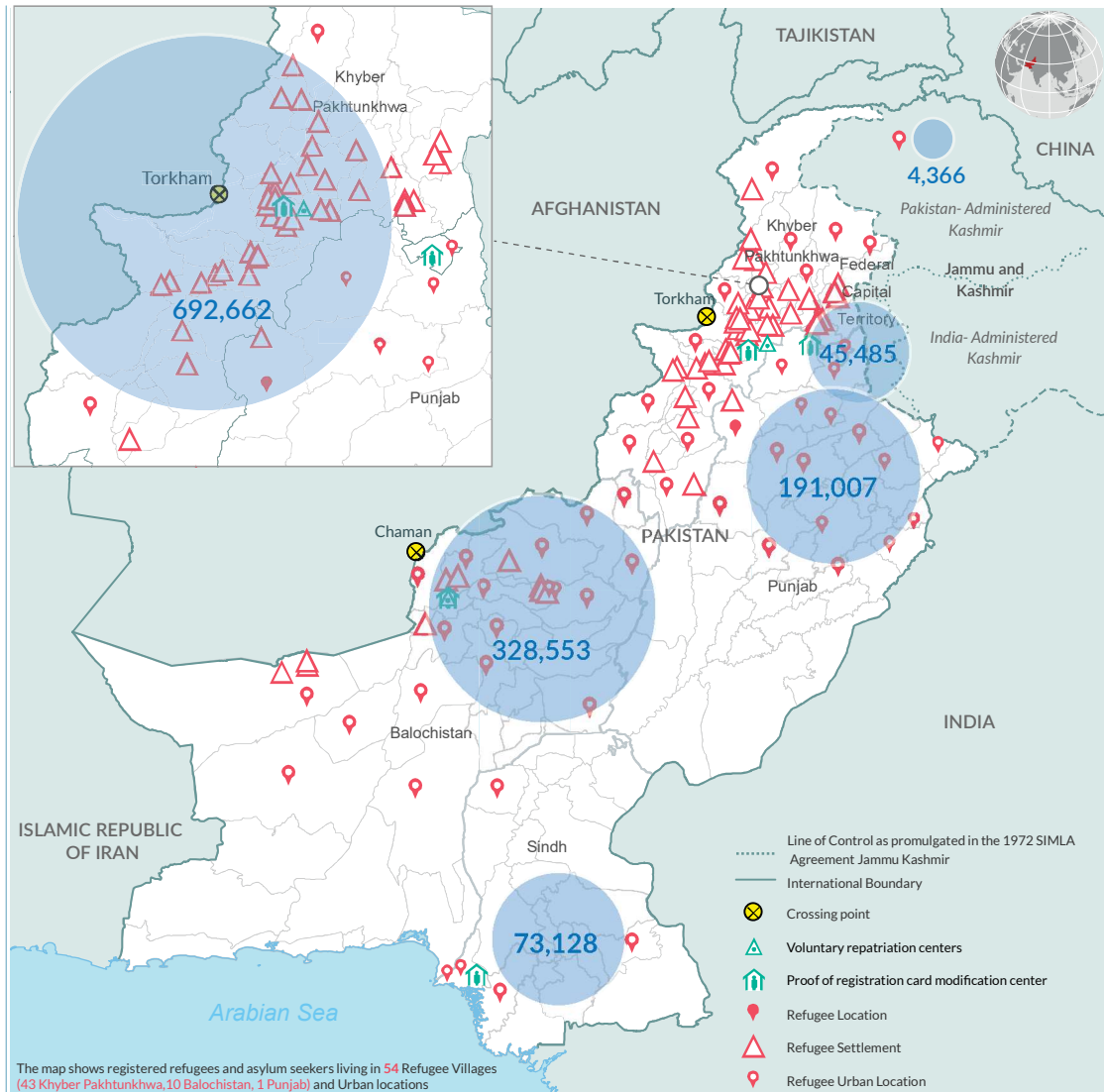
AGE AND GENDER COMPOSITION



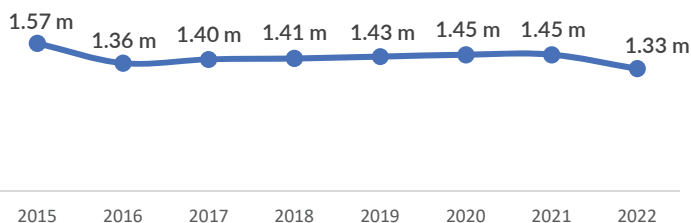
327,384 Households

70,236 (21.4%) Female-Headed

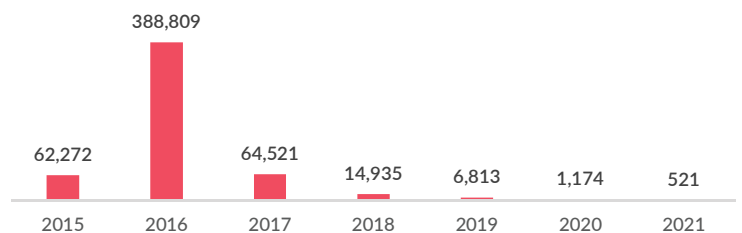
The Population Statistics are compiled monthly using data from UNHCR Profile Global Registration System (Progres V4) and external government databases. External data are statistics as of 30 September 2022 from Afghan National Registration (ANR) Database.



TRENDS POPULATION TREND SINCE 2015



POPULATION DECREASE TREND SINCE 2015**



* The PoR verification and renewal exercise (DRIVE) concluded on 28 February 2022.

** Decreases result from voluntary repatriation, resettlement and inactivation, including due to deaths

Disclaimer: The boundaries and names shown and the designations used on the map do not imply official endorsement or acceptance by the United Nations. Dotted line represents approximately the Line of Control in Jammu and Kashmir agreed upon by India and Pakistan. The final status of Jammu and Kashmir has not yet been agreed upon by the parties. Creation date: 13 October 2022 Data Sources: Afghan National Registration (ANR) Database, UNHCR.

More information available on UNHCR: data portal, <https://data2.unhcr.org/en/country/pak>, Feedback: zahoor@unhcr.org