

## 2022 CCCM HNO

TOTAL IDPs IN YEMEN

4 M



CCCM PEOPLE IN NEED

1.8 M



CCCM PEOPLE IN ACUTE NEED

1.6 M



## 2022 CCCM HRP TARGET PEOPLE - REACHED

CCCM PEOPLE TARGETED

1.2 M

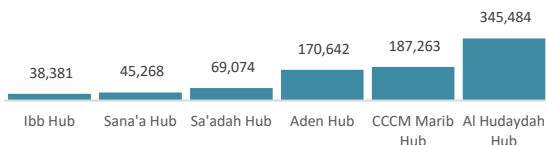
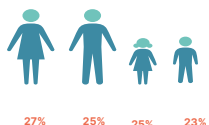


CCCM PEOPLE REACHED 2022

856 K



71%



## 2022 CCCM PARTNERS

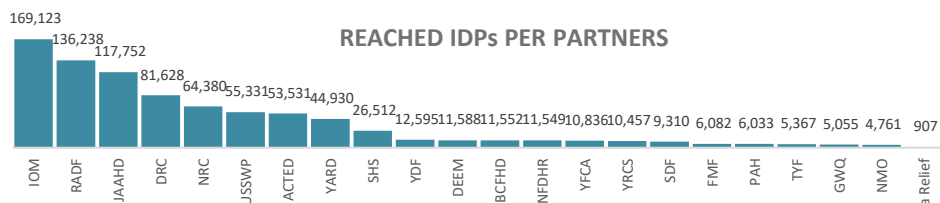
**UNHCR** AS A CLUSTER LEAD SUPPORTED THE CLUSTER BY FUNDING 12 PARTNERS IN THEIR IMPLEMENTATIONS WITH **47%** OF THE CLUSTER OVERALL REACH

**YDR CONSORTIUM** HAS SUPPORTED THE CLUSTER WITH CAPACITY BUILDING MATERIALS AND TRAININGS, ALSO HAS SUPPORTED FUNDING 4 PARTNERS IN THEIR IMPLEMENTATIONS

**23** DIRECT IMPLEMENTING PARTNERS **1** UN PARTNER (IOM- ALSO A CLUSTER CO-LEAD WITH **20%** OF THE CLUSTER OVERALL REACH), **4** INGO PARTNERS AND **18** NGO PARTNERS

ALSO **REACH** PROVIDED IM SUPPORT TO THE CLUSTER AND ITS PARTNERS

## REACHED IDPs PER PARTNERS



## 2022 CLUSTER REQUIREMENTS

REQUIREMENT

85 M



FUND RECIEVED

17.9 M



21%

## 2022 CCCM HRP TARGET SITES - REACHED

CCCM SITES TARGETED

1,561



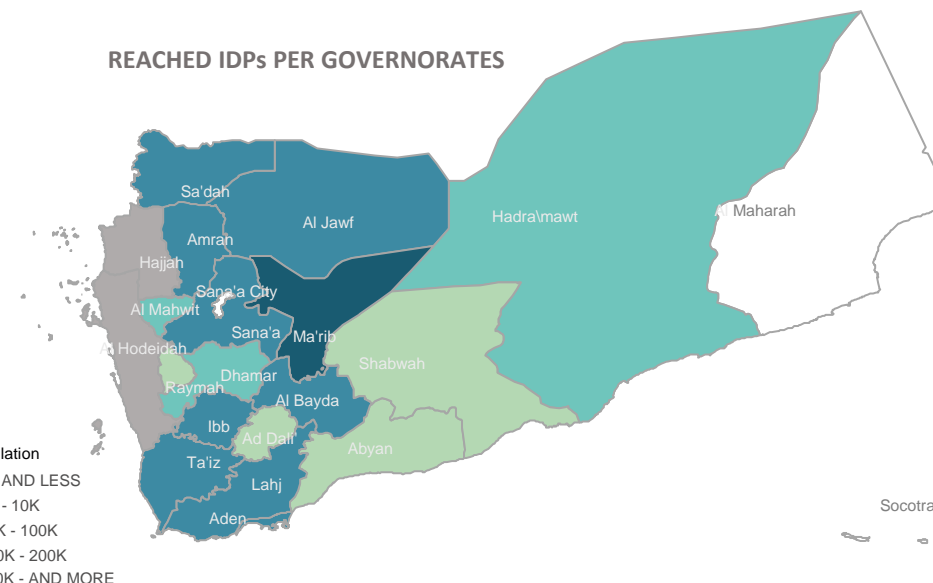
CCCM SITES TARGETED

799

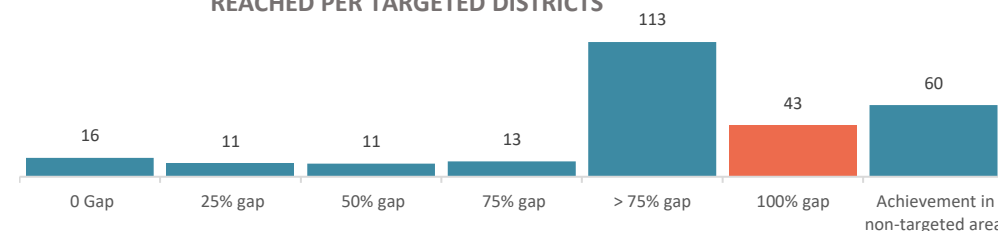


51%

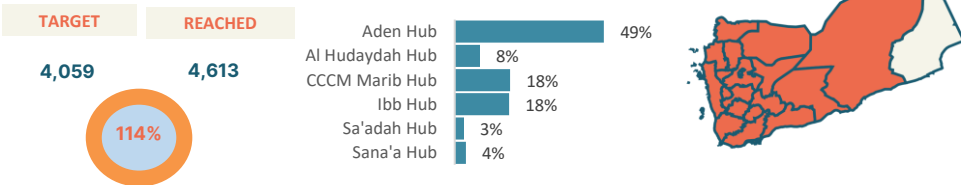
## REACHED IDPs PER GOVERNORATES



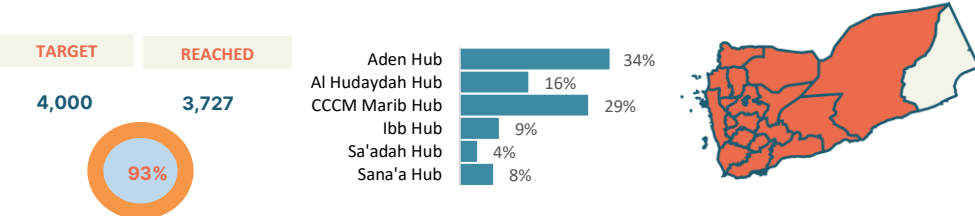
## REACHED PER TARGETED DISTRICTS



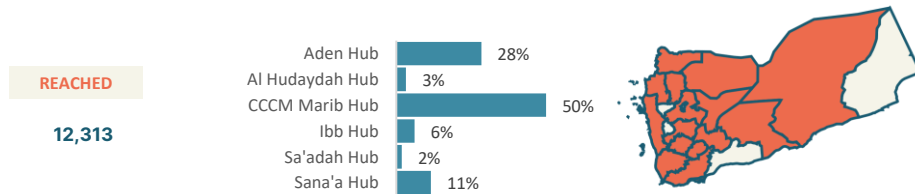
## # OF CCCM STAFF AND AUTHORITIES WITH STRENGTHENED CAPACITIES IN SITE MANAGEMENT (DISAGGREGATED)



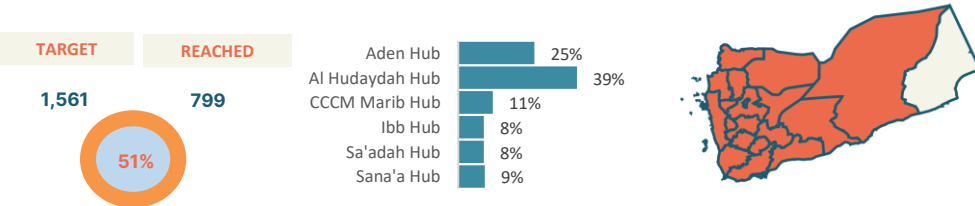
## # MEMBERS OF FUNCTIONAL COMMUNITY SELF-ORGANIZING COMMITTEES



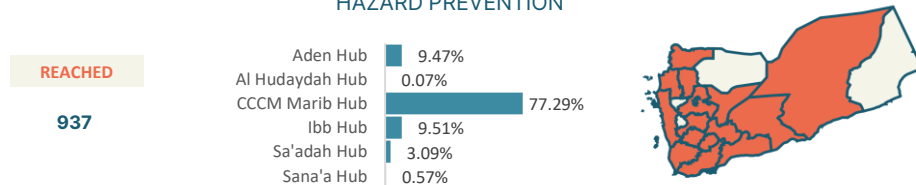
## # OF REFERRALS TRACKED AND ADDRESSED USING THE AREA BASED APPROACH



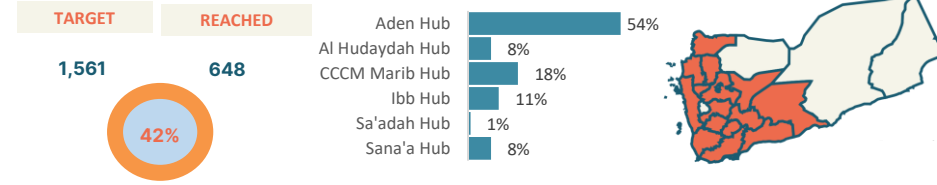
## # OF SITES WITH FUNCTIONAL SITE MANAGEMENT TEAMS



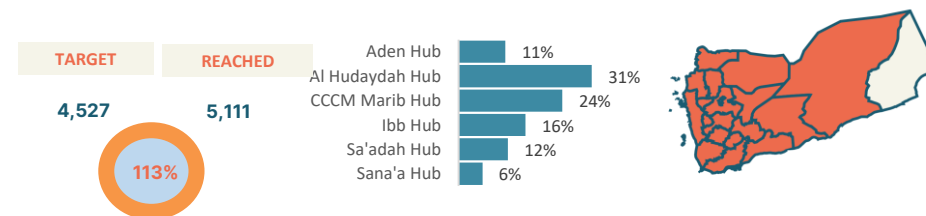
## # SITE TOOL KITS AND MATERIAL FOR MAINTENANCE, SAFETY AND HAZARD PREVENTION



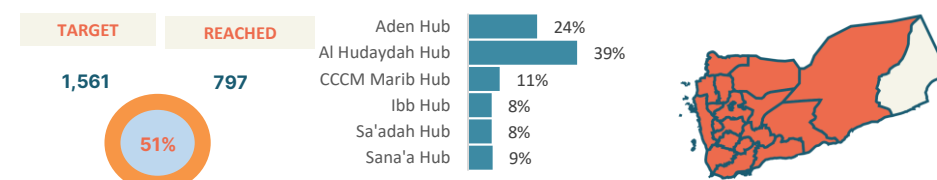
## # OF COMMUNITY-BASED PROJECTS AIMED AT SITE MANAGEMENT AND COMMUNITY OWNERSHIP



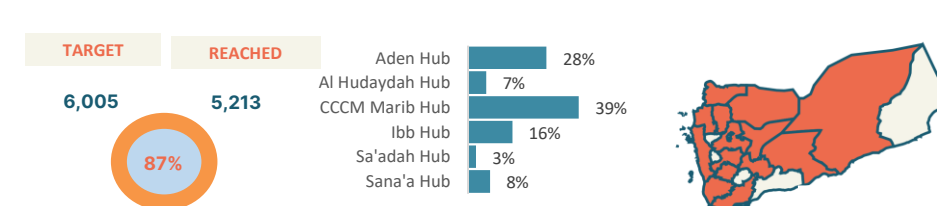
## # OF MASS INFORMATION CAMPAIGNS CONDUCTED



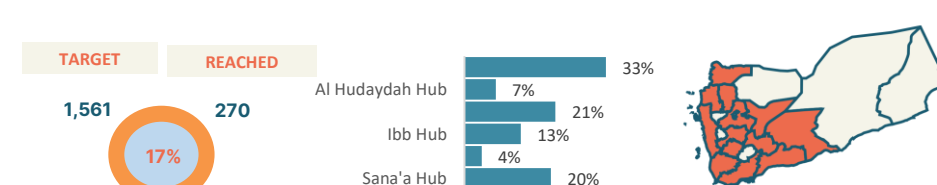
## # OF SITES WITH FUNCTIONAL COMPLAINTS AND FEEDBACK MECHANISMS ESTABLISHED

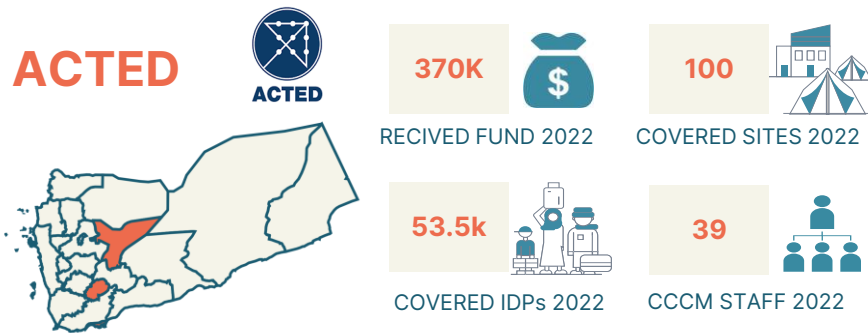


## # PEOPLE INCENTIVIZED THROUGH CASH FOR WORK FOR SITE MAINTENANCE

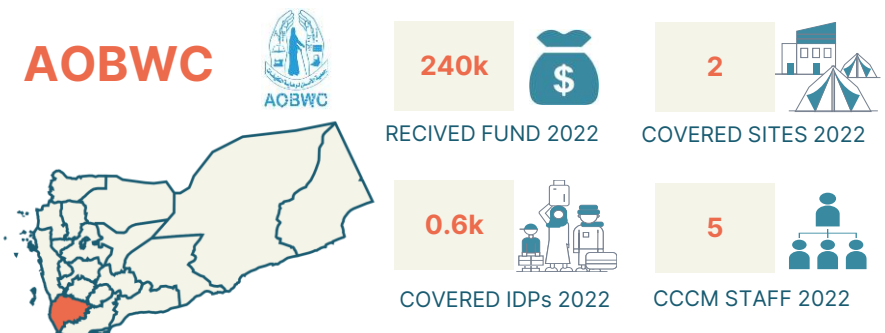


## # SITES WITH SAFETY AND RISK PREVENTION COMMUNITY-LED PROJECTS

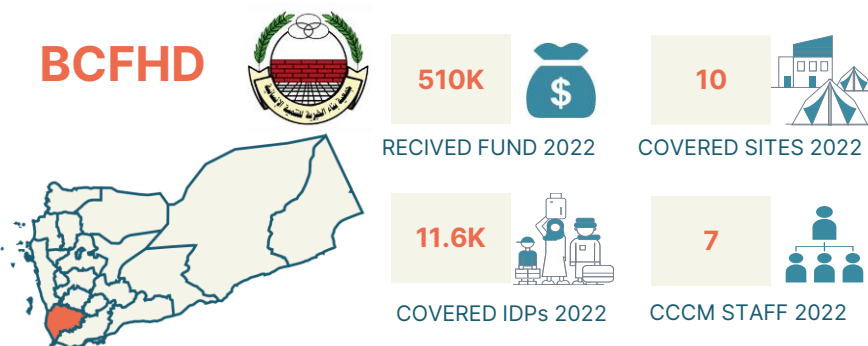




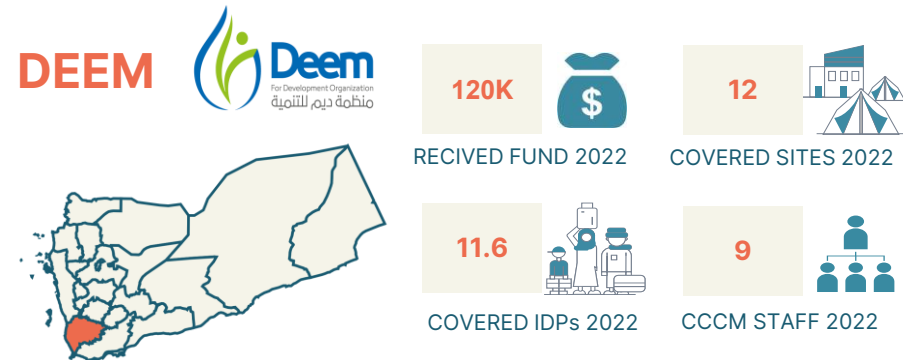
|   |      |
|---|------|
| # sites with safety and risk prevention community-led projects                  | 15   |
| % of sites with functional Complaints and Feedback Mechanisms established       | 100% |
| # of information campaigns conducted  | 106  |
| # of referrals tracked and addressed using the Area Based Approach              | 381  |
| # of community-based projects aimed at site management and community ownership  | 31   |
| # Members functional community self-organizing committees                       | 744  |
| Average Members of functional community self-organizing committees Per Site     | 7    |
| # of CCCM staff and authorities with strengthened capacities in site management | 774  |
| # people incentivized through cash for work for site maintenance                | 40   |
| # site tool kits and material for maintenance, safety and hazard prevention     | 537  |



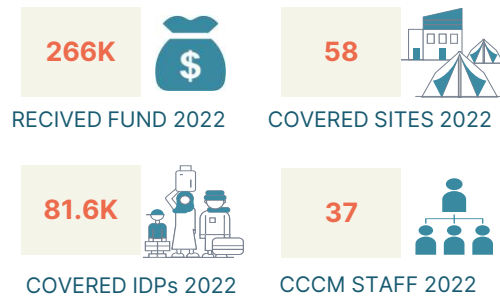
|   |      |
|---|------|
| # sites with safety and risk prevention community-led projects                  | 0    |
| % of sites with functional Complaints and Feedback Mechanisms established       | 100% |
| # of information campaigns conducted  | 46   |
| # of referrals tracked and addressed using the Area Based Approach              | 12   |
| # of community-based projects aimed at site management and community ownership  | 6    |
| # Members functional community self-organizing committees                       | 10   |
| Average Members of functional community self-organizing committees Per Site     | 5    |
| # of CCCM staff and authorities with strengthened capacities in site management | 129  |
| # people incentivized through cash for work for site maintenance                | 6    |
| # site tool kits and material for maintenance, safety and hazard prevention     | 135  |



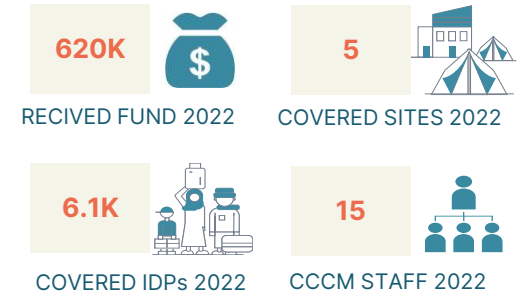
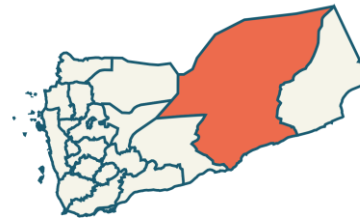
|   |      |
|---|------|
| # sites with safety and risk prevention community-led projects                  | 0    |
| % of sites with functional Complaints and Feedback Mechanisms established       | 100% |
| # of information campaigns conducted  | 3    |
| # of referrals tracked and addressed using the Area Based Approach              | 31   |
| # of community-based projects aimed at site management and community ownership  | 0    |
| # Members functional community self-organizing committees                       | 20   |
| Average Members of functional community self-organizing committees Per Site     | 2    |
| # of CCCM staff and authorities with strengthened capacities in site management | 264  |
| # people incentivized through cash for work for site maintenance                | 200  |
| # site tool kits and material for maintenance, safety and hazard prevention     | 0    |



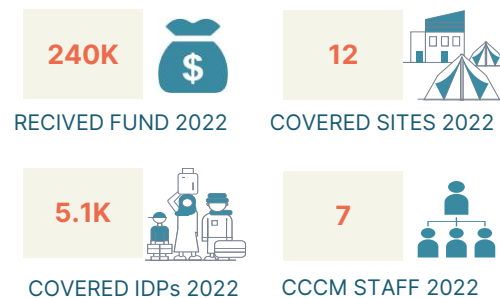
|   |      |
|---|------|
| # sites with safety and risk prevention community-led projects                  | 12   |
| % of sites with functional Complaints and Feedback Mechanisms established       | 100% |
| # of information campaigns conducted  | 384  |
| # of referrals tracked and addressed using the Area Based Approach              | 133  |
| # of community-based projects aimed at site management and community ownership  | 12   |
| # Members functional community self-organizing committees                       | 22   |
| Average Members of functional community self-organizing committees Per Site     | 2    |
| # of CCCM staff and authorities with strengthened capacities in site management | 148  |
| # people incentivized through cash for work for site maintenance                | 12   |
| # site tool kits and material for maintenance, safety and hazard prevention     | 12   |



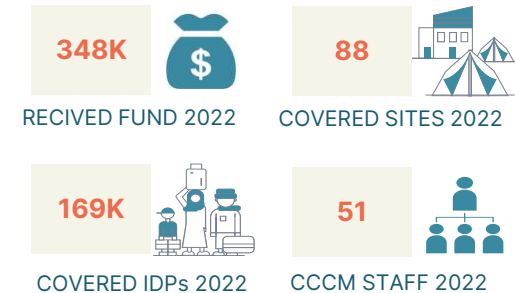
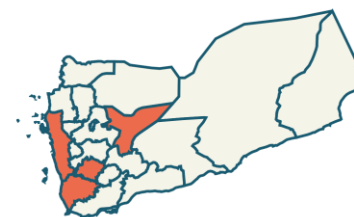
|   |      |
|---|------|
| # sites with safety and risk prevention community-led projects                  | 37   |
| % of sites with functional Complaints and Feedback Mechanisms established       | 100% |
| # of information campaigns conducted  | 106  |
| # of referrals tracked and addressed using the Area Based Approach              | 542  |
| # of community-based projects aimed at site management and community ownership  | 184  |
| # Members functional community self-organizing committees                       | 404  |
| Average Mwmbers of functional community self-organizing committees Per Site     | 7    |
| # of CCCM staff and authorities with strengthened capacities in site management | 754  |
| # people incentivized through cash for work for site maintenance                | 658  |
| # site tool kits and material for maintenance, safety and hazard prevention     | 141  |



|   |      |
|---|------|
| # sites with safety and risk prevention community-led projects                  | 0    |
| % of sites with functional Complaints and Feedback Mechanisms established       | 100% |
| # of information campaigns conducted  | 7    |
| # of referrals tracked and addressed using the Area Based Approach              | 53   |
| # of community-based projects aimed at site management and community ownership  | 0    |
| # Members functional community self-organizing committees                       | 36   |
| Average Members of functional community self-organizing committees Per Site     | 7    |
| # of CCCM staff and authorities with strengthened capacities in site management | 7    |
| # people incentivized through cash for work for site maintenance                | 316  |
| # site tool kits and material for maintenance, safety and hazard prevention     | 287  |

**GWQ**


|   |      |
|---|------|
| # sites with safety and risk prevention community-led projects                  | 37   |
| % of sites with functional Complaints and Feedback Mechanisms established       | 100% |
| # of information campaigns conducted  | 106  |
| # of referrals tracked and addressed using the Area Based Approach              | 542  |
| # of community-based projects aimed at site management and community ownership  | 184  |
| # Members functional community self-organizing committees                       | 404  |
| Aaverage Mwmbers of functional community self-organizing committees Per Site    | 7    |
| # of CCCM staff and authorities with strengthened capacities in site management | 754  |
| # people incentivized through cash for work for site maintenance                | 658  |
| # site tool kits and material for maintenance, safety and hazard prevention     | 141  |

**IOM**


|   |       |
|---|-------|
| # sites with safety and risk prevention community-led projects                  | 56    |
| % of sites with functional Complaints and Feedback Mechanisms established       | 100%  |
| # of information campaigns conducted  | 79    |
| # of referrals tracked and addressed using the Area Based Approach              | 5231  |
| # of community-based projects aimed at site management and community ownership  | 64    |
| # Members functional community self-organizing committees                       | 1122  |
| Average Members of functional community self-organizing committees Per Site     | 13    |
| # of CCCM staff and authorities with strengthened capacities in site management | 651   |
| # people incentivized through cash for work for site maintenance                | 141   |
| # site tool kits and material for maintenance, safety and hazard prevention     | 13403 |

## JAAHD



790K



RECEIVED FUND 2022

156



COVERED SITES 2022

177.8



COVERED IDPs 2022

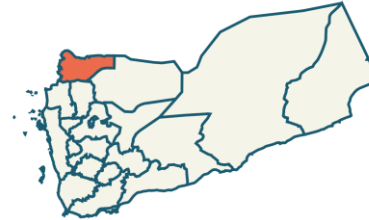
33



CCCM STAFF 2022

|   |      |
|---|------|
| # sites with safety and risk prevention community-led projects                  | 1    |
| % of sites with functional Complaints and Feedback Mechanisms established       | 100% |
| # of information campaigns conducted  | 1227 |
| # of referrals tracked and addressed using the Area Based Approach              | 0    |
| # of community-based projects aimed at site management and community ownership  | 5    |
| # Members functional community self-organizing committees                       | 131  |
| Average Mwmbers of functional community self-organizing committees Per Site     | 1    |
| # of CCCM staff and authorities with strengthened capacities in site management | 121  |
| # people incentivized through cash for work for site maintenance                | 0    |
| # site tool kits and material for maintenance, safety and hazard prevention     | 0    |

## NFDHR



-



RECEIVED FUND 2022

5



COVERED SITES 2022

11.5K



COVERED IDPs 2022

-



CCCM STAFF 2022

|   |      |
|---|------|
| # sites with safety and risk prevention community-led projects                  | 0    |
| % of sites with functional Complaints and Feedback Mechanisms established       | 100% |
| # of information campaigns conducted  | 4    |
| # of referrals tracked and addressed using the Area Based Approach              | 0    |
| # of community-based projects aimed at site management and community ownership  | 0    |
| # Members functional community self-organizing committees                       | 24   |
| Average Members of functional community self-organizing committees Per Site     | 5    |
| # of CCCM staff and authorities with strengthened capacities in site management | 36   |
| # people incentivized through cash for work for site maintenance                | 85   |
| # site tool kits and material for maintenance, safety and hazard prevention     | 0    |

## NMO



140K



RECEIVED FUND 2022

4



COVERED SITES 2022

4.8K



COVERED IDPs 2022

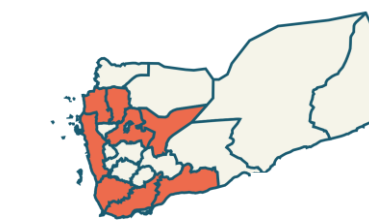
7



CCCM STAFF 2022

|   |      |
|---|------|
| # sites with safety and risk prevention community-led projects                  | 4    |
| % of sites with functional Complaints and Feedback Mechanisms established       | 100% |
| # of information campaigns conducted  | 0    |
| # of referrals tracked and addressed using the Area Based Approach              | 7    |
| # of community-based projects aimed at site management and community ownership  | 0    |
| # Members functional community self-organizing committees                       | 10   |
| Average Mwmbers of functional community self-organizing committees Per Site     | 3    |
| # of CCCM staff and authorities with strengthened capacities in site management | 4    |
| # people incentivized through cash for work for site maintenance                | 300  |
| # site tool kits and material for maintenance, safety and hazard prevention     | 30   |

## NRC



212K



RECEIVED FUND 2022

48



COVERED SITES 2022

64.4



COVERED IDPs 2022

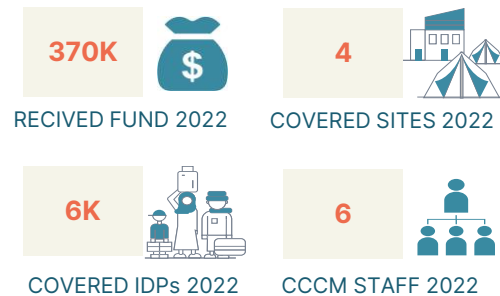
34



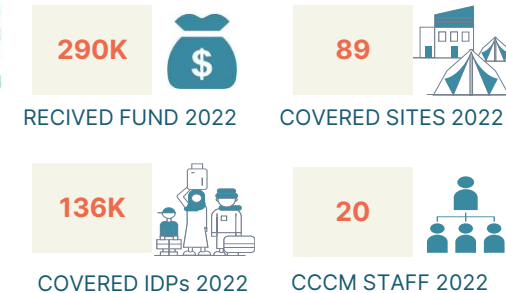
CCCM STAFF 2022

|   |     |
|---|-----|
| # sites with safety and risk prevention community-led projects                  | 19  |
| % of sites with functional Complaints and Feedback Mechanisms established       | 96% |
| # of information campaigns conducted  | 165 |
| # of referrals tracked and addressed using the Area Based Approach              | 276 |
| # of community-based projects aimed at site management and community ownership  | 12  |
| # Members functional community self-organizing committees                       | 318 |
| Average Members of functional community self-organizing committees Per Site     | 7   |
| # of CCCM staff and authorities with strengthened capacities in site management | 333 |
| # people incentivized through cash for work for site maintenance                | 388 |
| # site tool kits and material for maintenance, safety and hazard prevention     | 29  |





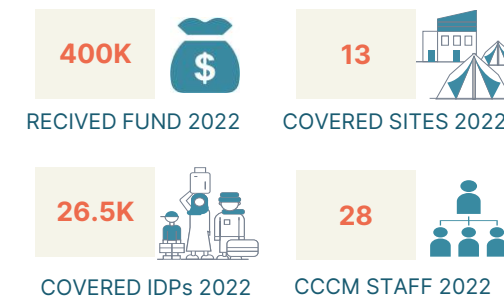
|   |      |
|---|------|
| # sites with safety and risk prevention community-led projects                  | 0    |
| % of sites with functional Complaints and Feedback Mechanisms established       | 100% |
| # of information campaigns conducted  | 0    |
| # of referrals tracked and addressed using the Area Based Approach              | 2863 |
| # of community-based projects aimed at site management and community ownership  | 0    |
| # Members functional community self-organizing committees                       | 25   |
| Average Mwmbers of functional community self-organizing committees Per Site     | 6    |
| # of CCCM staff and authorities with strengthened capacities in site management | 59   |
| # people incentivized through cash for work for site maintenance                | 65   |
| # site tool kits and material for maintenance, safety and hazard prevention     | 0    |



|   |      |
|---|------|
| # sites with safety and risk prevention community-led projects                  | 0    |
| % of sites with functional Complaints and Feedback Mechanisms established       | 100% |
| # of information campaigns conducted  | 4    |
| # of referrals tracked and addressed using the Area Based Approach              | 0    |
| # of community-based projects aimed at site management and community ownership  | 0    |
| # Members functional community self-organizing committees                       | 24   |
| Average Members of functional community self-organizing committees Per Site     | 5    |
| # of CCCM staff and authorities with strengthened capacities in site management | 36   |
| # people incentivized through cash for work for site maintenance                | 85   |
| # site tool kits and material for maintenance, safety and hazard prevention     | 0    |



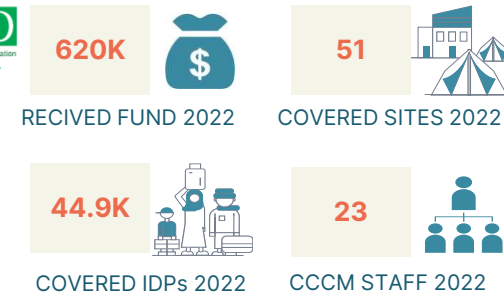
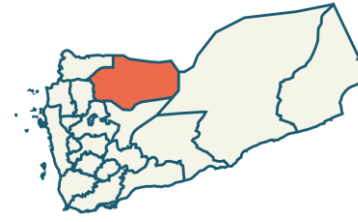
|   |      |
|---|------|
| # sites with safety and risk prevention community-led projects                  | 14   |
| % of sites with functional Complaints and Feedback Mechanisms established       | 100% |
| # of information campaigns conducted  | 62   |
| # of referrals tracked and addressed using the Area Based Approach              | 279  |
| # of community-based projects aimed at site management and community ownership  | 14   |
| # Members functional community self-organizing committees                       | 41   |
| Average Mwmbers of functional community self-organizing committees Per Site     | 3    |
| # of CCCM staff and authorities with strengthened capacities in site management | 17   |
| # people incentivized through cash for work for site maintenance                | 146  |
| # site tool kits and material for maintenance, safety and hazard prevention     | 30   |



|   |      |
|---|------|
| # sites with safety and risk prevention community-led projects                  | 13   |
| % of sites with functional Complaints and Feedback Mechanisms established       | 100% |
| # of information campaigns conducted  | 1215 |
| # of referrals tracked and addressed using the Area Based Approach              | 572  |
| # of community-based projects aimed at site management and community ownership  | 48   |
| # Members functional community self-organizing committees                       | 97   |
| Average Members of functional community self-organizing committees Per Site     | 7    |
| # of CCCM staff and authorities with strengthened capacities in site management | 253  |
| # people incentivized through cash for work for site maintenance                | 1746 |
| # site tool kits and material for maintenance, safety and hazard prevention     | 738  |



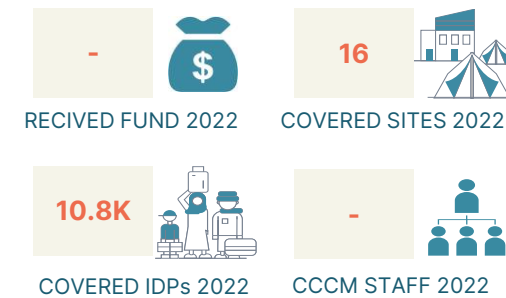
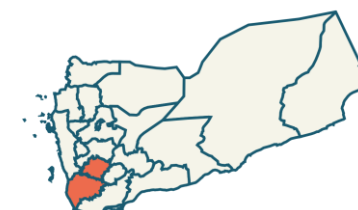
|   |      |
|---|------|
| # sites with safety and risk prevention community-led projects                  | 2    |
| % of sites with functional Complaints and Feedback Mechanisms established       | 100% |
| # of information campaigns conducted  | 340  |
| # of referrals tracked and addressed using the Area Based Approach              | 373  |
| # of community-based projects aimed at site management and community ownership  | 13   |
| # Members functional community self-organizing committees                       | 22   |
| Aaverage Mwmbers of functional community self-organizing committees Per Site    | 2    |
| # of CCCM staff and authorities with strengthened capacities in site management | 340  |
| # people incentivized through cash for work for site maintenance                | 127  |
| # site tool kits and material for maintenance, safety and hazard prevention     | 13   |



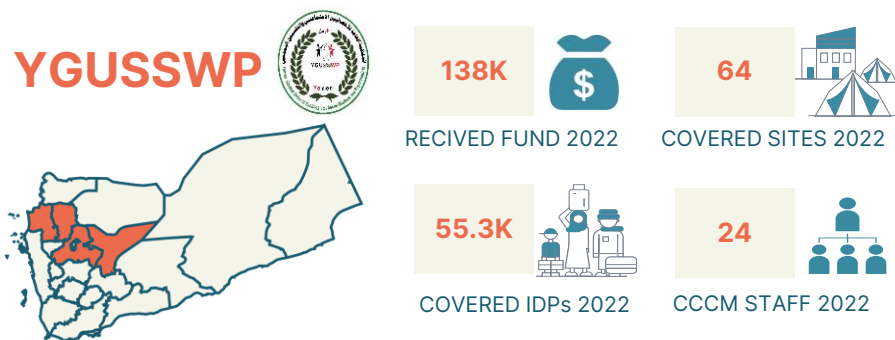
|   |      |
|---|------|
| # sites with safety and risk prevention community-led projects                  | 0    |
| % of sites with functional Complaints and Feedback Mechanisms established       | 100% |
| # of information campaigns conducted  | 300  |
| # of referrals tracked and addressed using the Area Based Approach              | 124  |
| # of community-based projects aimed at site management and community ownership  | 0    |
| # Members functional community self-organizing committees                       | 102  |
| Average Members of functional community self-organizing committees Per Site     | 2    |
| # of CCCM staff and authorities with strengthened capacities in site management | 58   |
| # people incentivized through cash for work for site maintenance                | 66   |
| # site tool kits and material for maintenance, safety and hazard prevention     | 0    |



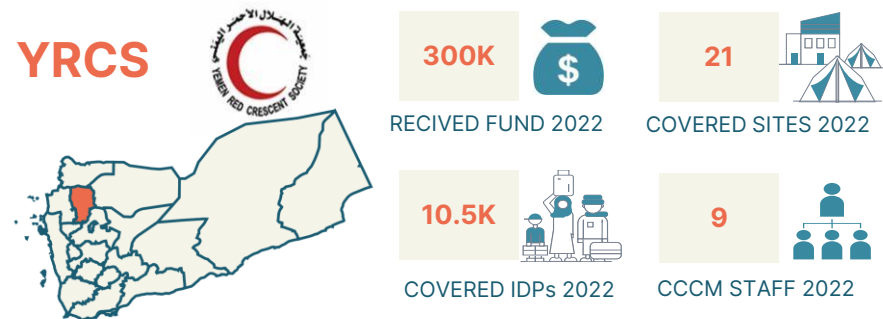
|   |      |
|---|------|
| # sites with safety and risk prevention community-led projects                  | 11   |
| % of sites with functional Complaints and Feedback Mechanisms established       | 100% |
| # of information campaigns conducted  | 291  |
| # of referrals tracked and addressed using the Area Based Approach              | 89   |
| # of community-based projects aimed at site management and community ownership  | 6    |
| # Members functional community self-organizing committees                       | 20   |
| Aaverage Mwmbers of functional community self-organizing committees Per Site    | 2    |
| # of CCCM staff and authorities with strengthened capacities in site management | 48   |
| # people incentivized through cash for work for site maintenance                | 0    |
| # site tool kits and material for maintenance, safety and hazard prevention     | 501  |



|   |      |
|---|------|
| # sites with safety and risk prevention community-led projects                  | 16   |
| % of sites with functional Complaints and Feedback Mechanisms established       | 100% |
| # of information campaigns conducted  | 80   |
| # of referrals tracked and addressed using the Area Based Approach              | 123  |
| # of community-based projects aimed at site management and community ownership  | 46   |
| # Members functional community self-organizing committees                       | 51   |
| Average Members of functional community self-organizing committees Per Site     | 3    |
| # of CCCM staff and authorities with strengthened capacities in site management | 331  |
| # people incentivized through cash for work for site maintenance                | 381  |
| # site tool kits and material for maintenance, safety and hazard prevention     | 32   |



|   |      |
|---|------|
| # sites with safety and risk prevention community-led projects                  | 34   |
| % of sites with functional Complaints and Feedback Mechanisms established       | 100% |
| # of information campaigns conducted  | 204  |
| # of referrals tracked and addressed using the Area Based Approach              | 106  |
| # of community-based projects aimed at site management and community ownership  | 52   |
| # Members functional community self-organizing committees                       | 317  |
| Aaverage Mwmbers of functional community self-organizing committees Per Site    | 5    |
| # of CCCM staff and authorities with strengthened capacities in site management | 112  |
| # people incentivized through cash for work for site maintenance                | 339  |
| # site tool kits and material for maintenance, safety and hazard prevention     | 42   |



|   |      |
|---|------|
| # sites with safety and risk prevention community-led projects                  | 21   |
| % of sites with functional Complaints and Feedback Mechanisms established       | 100% |
| # of information campaigns conducted  | 110  |
| # of referrals tracked and addressed using the Area Based Approach              | 1006 |
| # of community-based projects aimed at site management and community ownership  | 14   |
| # Members functional community self-organizing committees                       | 37   |
| Aaverage Mwmbers of functional community self-organizing committees Per Site    | 2    |
| # of CCCM staff and authorities with strengthened capacities in site management | 17   |
| # people incentivized through cash for work for site maintenance                | 86   |
| # site tool kits and material for maintenance, safety and hazard prevention     | 18   |



|   |      |
|---|------|
| # sites with safety and risk prevention community-led projects                  | 3    |
| % of sites with functional Complaints and Feedback Mechanisms established       | 100% |
| # of information campaigns conducted  | 21   |
| # of referrals tracked and addressed using the Area Based Approach              | 26   |
| # of community-based projects aimed at site management and community ownership  | 13   |
| # Members functional community self-organizing committees                       | 5    |
| Aaverage Mwmbers of functional community self-organizing committees Per Site    | 2    |
| # of CCCM staff and authorities with strengthened capacities in site management | 67   |
| # people incentivized through cash for work for site maintenance                | 42   |
| # site tool kits and material for maintenance, safety and hazard prevention     | 8    |

## OTHER PARTNERS

