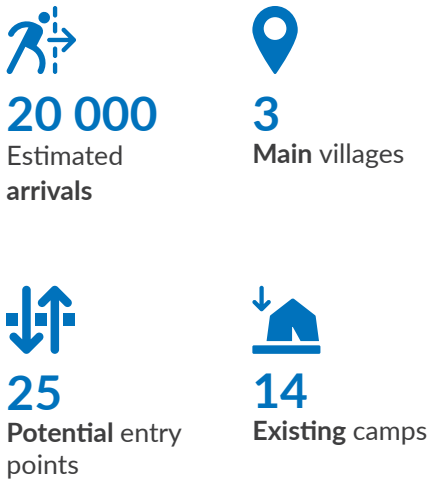


Context

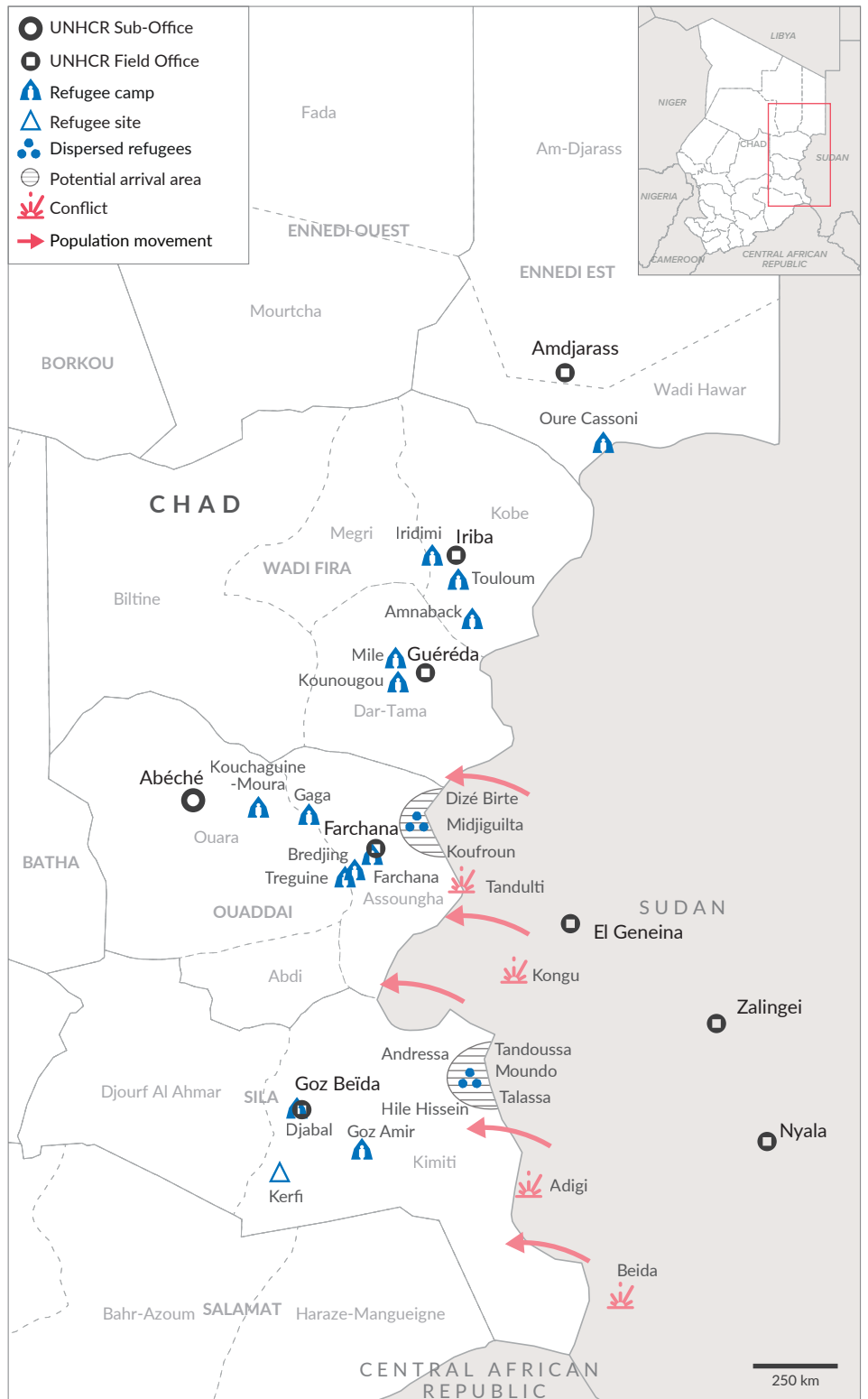
In April 2023, the UNHCR began registering an [influx of Sudanese refugees](#) at border entry points in eastern Chad, coming from Western Darfur after military confrontations in the region. UNHCR teams on the ground in the provinces of Ennedi Est, Wadi Fira, Ouaddai, and Sila are working with the CNARR, local authorities, and partners to continue [monitoring and responding to the situation](#), as well as [mobilizing resources](#) to provide life-saving assistance services to new arrivals.



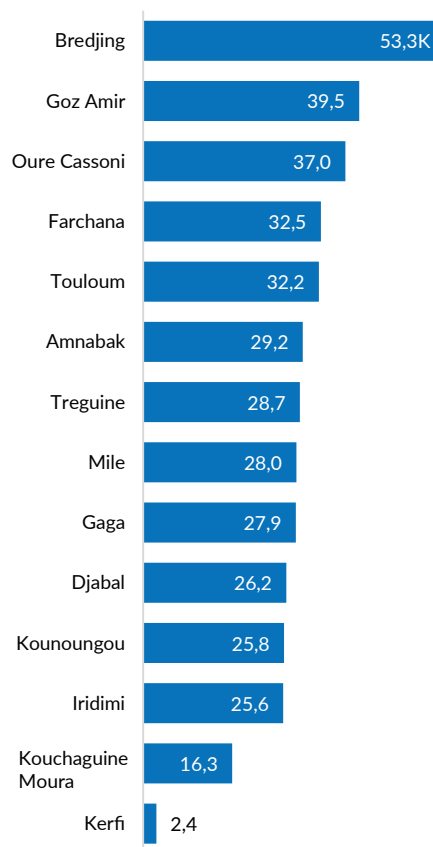
Key figures



Situation map



Refugee population in existing camps - in thousands



The boundaries and names shown and the designations used on this map do not imply official endorsement or acceptance by the United Nations
Data sources: UNHCR, CNARR, OCHA, OSM