



USAID
FROM THE AMERICAN PEOPLE



People for development

GRADUATING TO RESILIENCE



trickleup

 **AIR**
Advancing Evidence.
Improving Lives.

Graduating to Resilience Activity Overview

Goal: Graduate extremely poor refugee and Ugandan households in Kamwenge District from conditions of food insecurity and fragile livelihoods to self-reliance and resilience

Period: 7 years (Oct 1, 2017 - Sept 30, 2024) in two cohorts

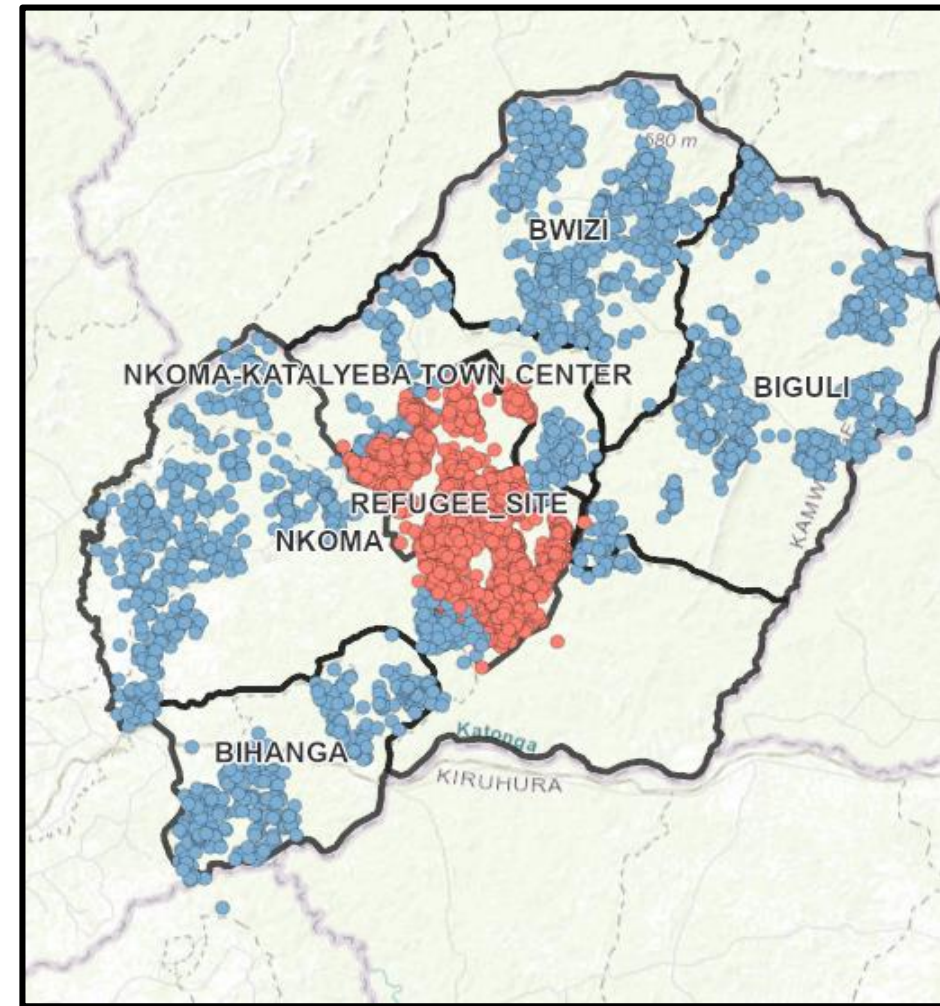
Participants: 13,829 women and youth as primary participants

- Cohort 1: 6,629 primary participants (Active 5,199)
- Cohort 2: 7,051 primary participants

Budget: \$36.7 million

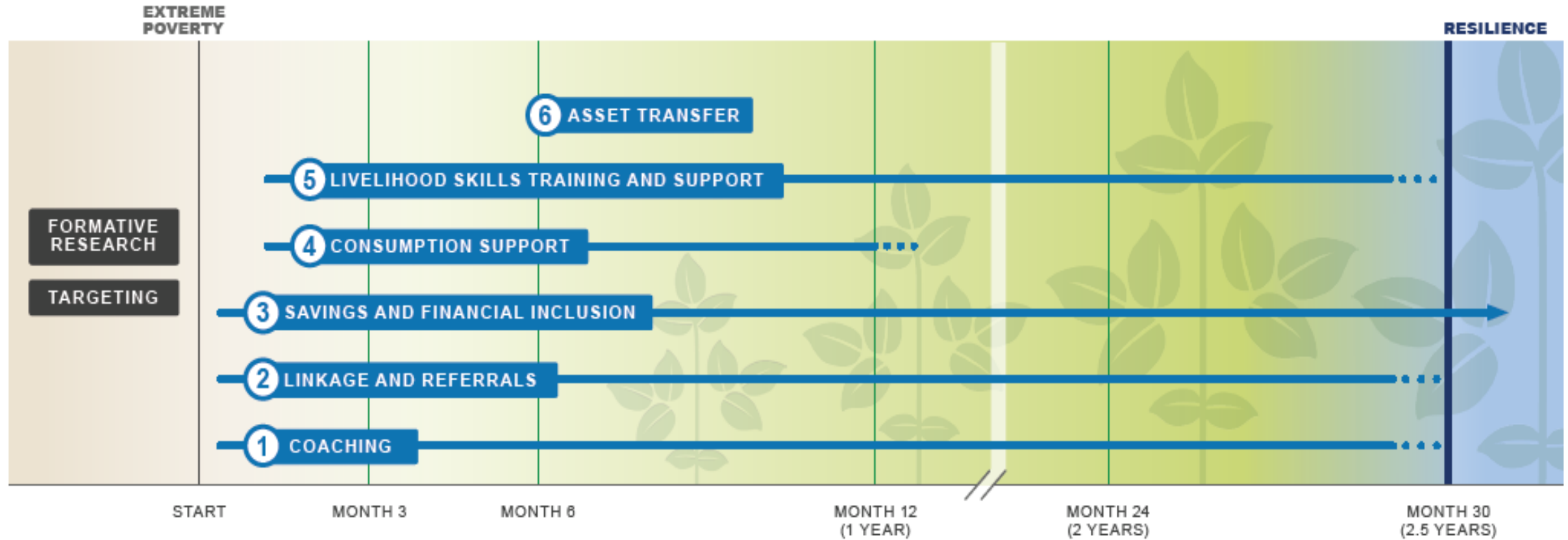
Implementer: AVSI Foundation in a consortium with Trickle Up and American Institutes for Research (AIR)

External evaluator: Innovations for Poverty Action (IPA) conducting an RCT to measure impact and cost-effectiveness of the graduation model



Blue: Host Community Households
Red: Refugee Households

Graduation Approach – Sequencing



Cohort 2 Feb 2022

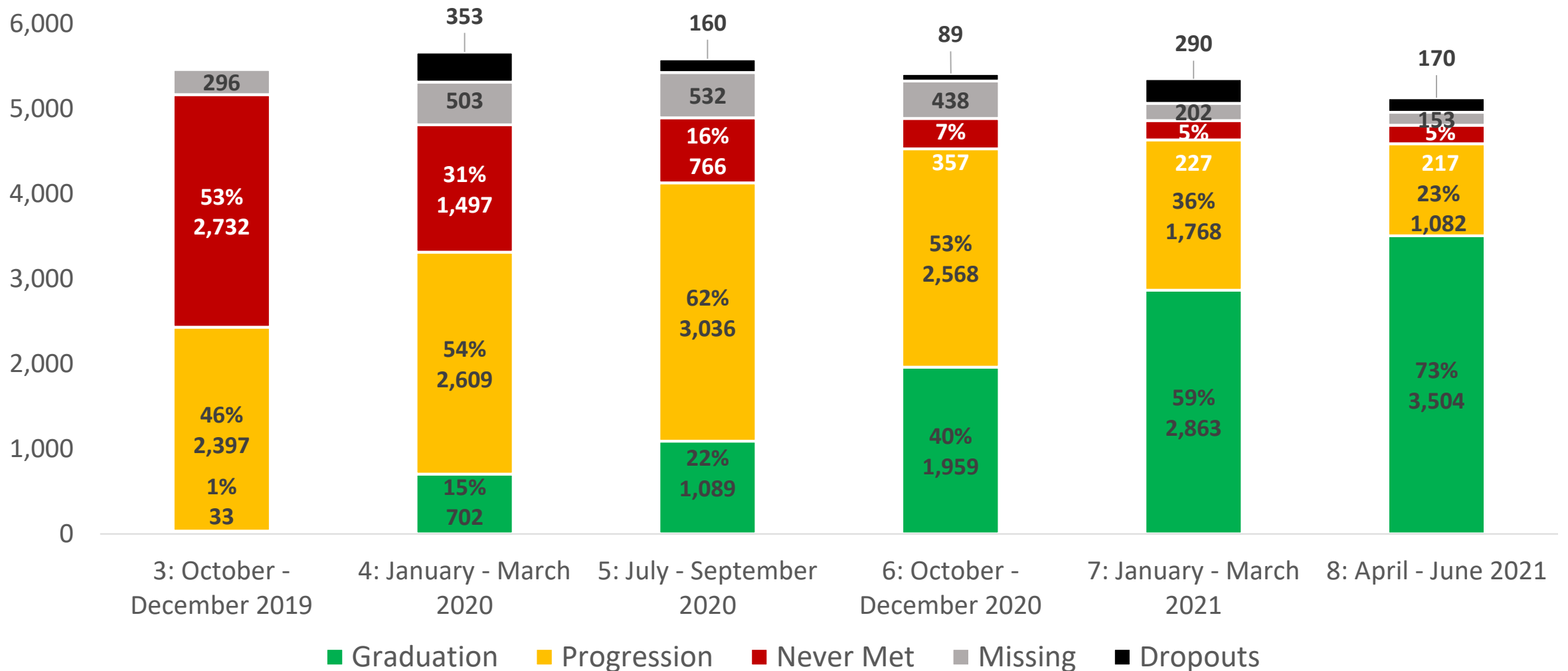
Jan 2023

Jan 2024

Graduation Components and Structure – Cohort 1

PROGRAM COMPONENT	ARM 1 STANDARD GRADUATION	ARM 2 GROUP COACHING	ARM 3 EMPOWERMENT MODEL
Consumption Support	●	●	●
Livelihood Skills Training and Support	●	●	●
Savings and Financial Inclusion	●	●	●
Asset Transfer	●	●	—
Coaching	INDIVIDUAL	GROUP	INDIVIDUAL
Linkage and Referrals	●	●	●
	1,571 USD	1,428 USD Best in CBA	1,279 USD

Graduation Progress Over Time (Cohort 1)



Summary of Cohort 1 Graduation Results

Stage	Definition	Host		Refugee		Total	
		# HHs	% HHs	# HHs	% HHs	# HHs	% HHs
Graduation	Met the criteria at least three times consecutively	1758	73%	1746	73%	3504	73%
Progression	Household is working towards graduation but has yet to meet all criteria three times consecutively.	536	22%	546	23%	1082	23%
Never Met	Never met grad criteria	126	5%	91	4%	217	5%
Total		2420	100%	2383	100%	4803	100%

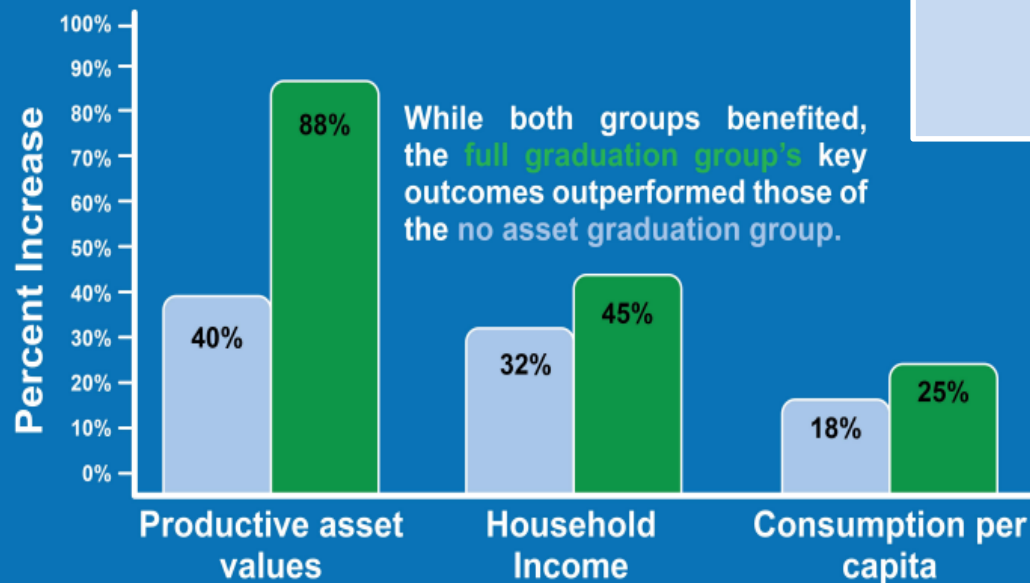
Sub-Stage	Definition	Arm 1		Arm 2		Arm 3		Total	
		# HHs	% HHs	# HHs	% HHs	# HHs	% HHs	# HHs	% HHs
Graduation	Met the criteria at least three times consecutively	1244	76%	1160	74%	1100	69%	3504	73%
Progression	Household is working towards graduation but has yet to meet all criteria three times consecutively.	309	19%	370	23%	403	25%	1082	23%
Never Met	Never met grad criteria	78	5%	46	3%	93	6%	217	5%
Total		1631	100%	1576	100%	1596	100%	4803	100%

External Evaluation Results – IPA

Results from the Randomized Control Trial

Innovations for Poverty Action (IPA) conducted an RCT with 10,514 households to test the performance and cost-effectiveness of three variations of the graduation model.

6,267	2,172	2,070	42	72
Treatment Households	Pure Control Households	Spillover Control Households	Refugee Villages	Host Villages



Overall significantly positive results for all treatment groups compared to the control groups



Food security increased among all treatment groups.

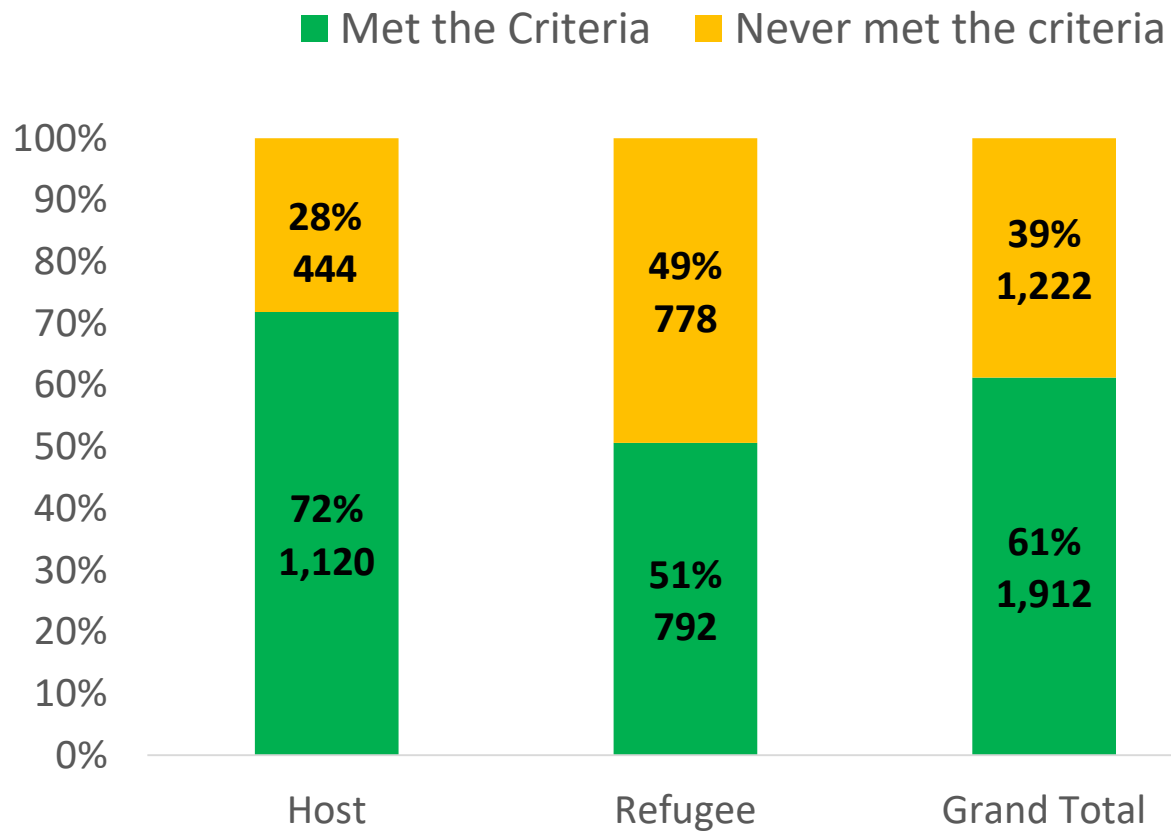


Well-being increased among all treatment groups.



The individual and group coaching models had similar impacts, but the group coaching model cost 13% less.

Resilience follow up – 18 months Post-Graduation Status Graduated Households (73%)



Animation

(1406) Graduating to Resilience Animation Video - YouTube

Graduating to Resilience



Graduating to Resilience Animation Video



avsiusa
116 subscribers



Subscribed ▾



7



Share



Lessons - Impacting Graduation Program Designs and adapted within Cohort 2

- **Group coaching** is effective – promotes social cohesion/peer support BUT an additional household level touch point is helpful for observation and tailored support
- Most Significant Activities identified by participants – **coaching, savings, asset transfer** in a graduation approach type program
- **Family/household approach** – an inclusive way of working with an entire family while addressing women and youth needs
- **Refugees** might take longer to graduate compared to Host (18-24 months might be enough for host but refugees might need 24-30 months)
- **Drop out** will happen! Plan for this (about 22%) @**Cohort 2 only 5% drop out at month 13/24**
- **Adaptive Learning** and the use of evidence for decision making is critical
- **Digital Tools and products** can be leveraged for better delivery at scale and to leverage impacts – Markets, connections, efficacy



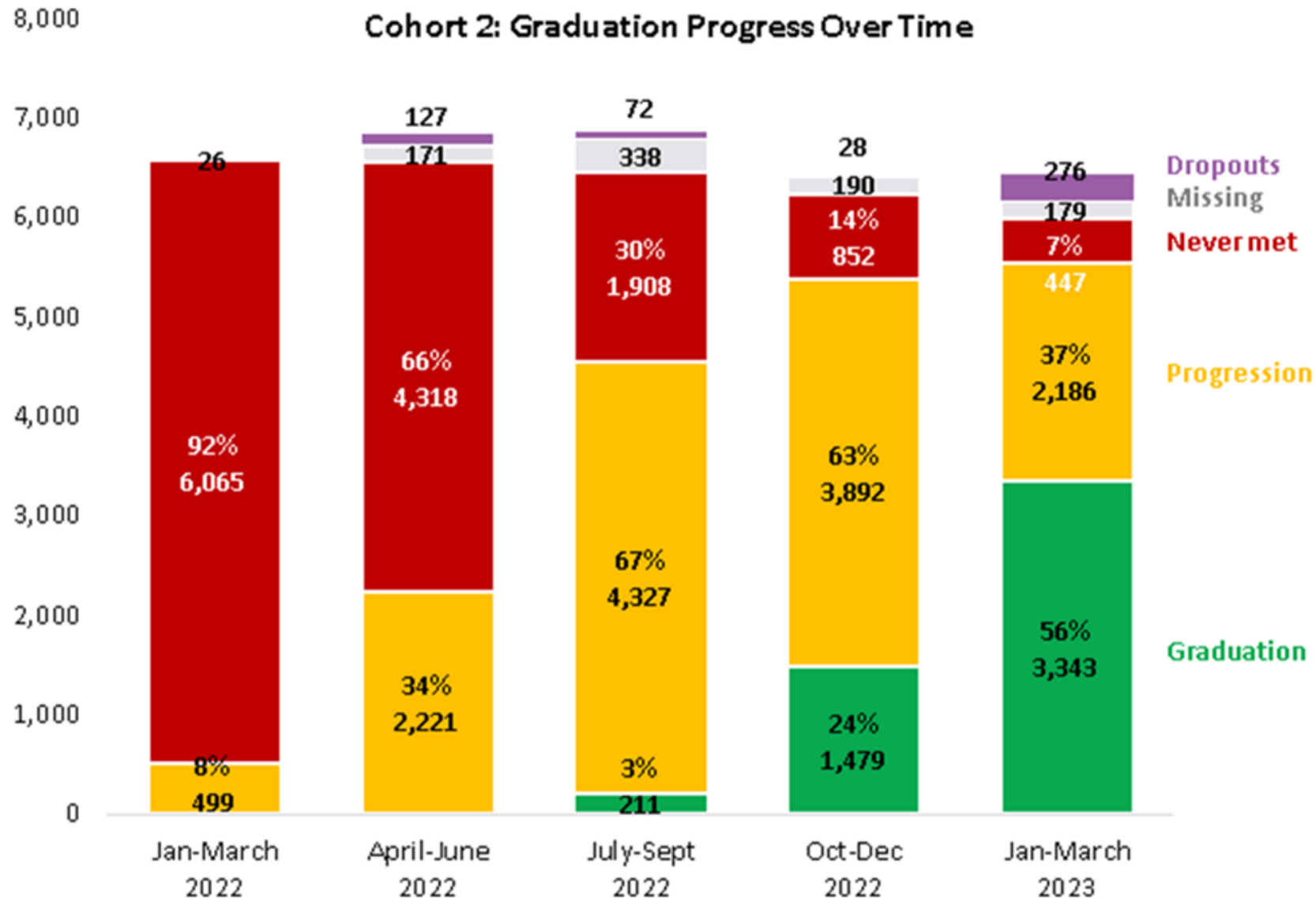
Graduating to Resilience

Cohort 2



Program Component	Arm 1: Group coaching Model	Arm 2: Group Coaching Model + Mental Health
Consumption Support	●	●
Livelihood Skills Training and Support	●	●
Savings and Financial Inclusion	●	●
Asset Transfer	●	●
Coaching	Group	Group
Linkages and Referrals	●	●
Interpersonal Group-based Therapy		●

Graduation Progress Over Time (Cohort 2)



Adaptations - Scale Up and other designs

- Participant reach: Cost effectiveness based on **working within a single settlement** – targeting everyone (**90% of participants**)
- Potential Graduation Rates: **73-85%**
- Optimum Graduation Timing: **24 months - Inclusive of Refugees and Host**
- Consumption Support: considerations for **reduction to 8 months** (5 USD per person per month for 5 people) 200 USD instead of 300 USD (savings of 100 USD)
- Cost per Household: **\$1,000 – 1,100 USD - Viable for 24 months**
- Coaching: **Group coaching: 1 coach to 100 Households. Use a “buddy”, Use a structured curriculum**
- **Market systems development:** Targeted engagements with MSD actors towards leveraging support, reducing costs, and increasing sustainability and scale
- Spill over possible especially in the area of food security and among host communities
- Measurement of long-term resilience: 1 year post graduation – Results show (61% Resilience and 72%H and 52% R)
- Positive evidence supporting psychosocial support activity embedding in coaching – Added to coaching topics
- Cognitive and social emotional growth of children is not automatic – Additions to be made to ECD and Parenting

Project Title: Sustainable Market Inclusive Livelihood Pathways to Self-Reliance (SMILES)



Funding Partner:



IKEA Foundation



Budget:
25 million Euro



Duration:

5 years
(1st November, 2022 to
31st October, 2027)

Sectors:



Target:



14,000 Households (70,000 People)
(50% refugees and 50% host community)

Location:



1. Kyaka II Settlement, Kyegegwa District.
2. Kyangwali Settlement, Kikuube District.

Partners:



People for development

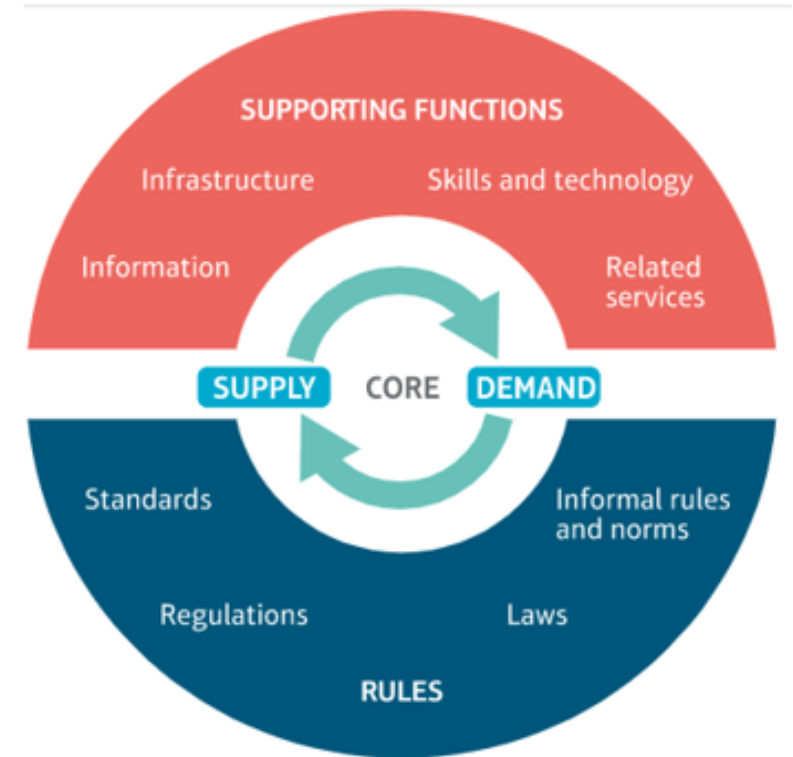


Project Approach

MARKET SYSTEM DEVELOPMENT

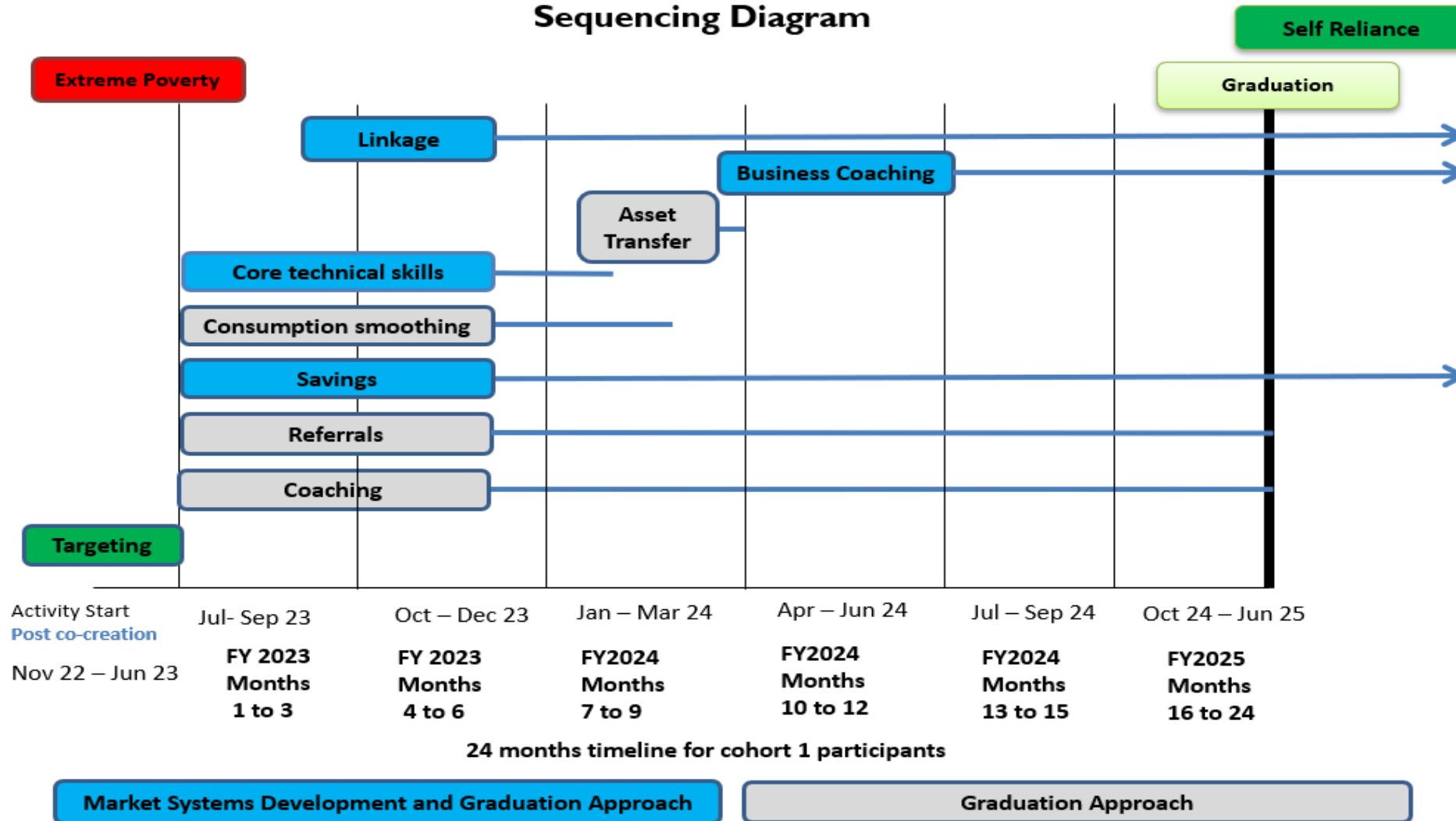
GRADUATION

- Coaching
- Savings
- Consumption support
- Technical skills
 - *Agronomy*
 - *Financial Literacy,*
 - *Business planning*
- Asset transfer (apprenticeship)
- Business coaching
- Referrals
- Linkages



Project Components

Sustainable Market Inclusive Livelihood Pathways to Self-Reliance Sequencing Diagram





USAID
FROM THE AMERICAN PEOPLE



People for development

“This publication is made possible by the generous support of the American people through the Office of Food for Peace, the United States Agency for International Development (USAID) under the terms of Cooperative Agreement No. AID-FFP-A-17-00006. The contents are the responsibility of AVSI Foundation and Graduating to Resilience Activity and do not necessarily reflect the views of USAID or the United States Government.”

Graduating to Resilience is implemented by AVSI Foundation in partnership with

