



## STRATEGIC OBJECTIVES

Enable refugees to live dignified lives in secure settlements with opportunities for self-reliance

Enhance refugees' access to adequate housing and improved living conditions

Engage refugee and host communities in the provision & design of shelter solutions

Work with development partners and the private sector to ensure better housing and living conditions

## PROGRESS / MAIN ACHIEVEMENTS

- ▶ As of 31st December 2022, 312,710 refugees & asylum seekers are living in **adequate dwelling** with 1,631 new transitional shelters constructed, and 801 shelters improved in 2022.
- ▶ In 2022, 64,247 new arrivals and relocated refugees were provided with 7,735 **emergency shelters** in 8 camps/sites, including in Melkadida, Gambella, Amhara, Afar and Assosa.
- ▶ **Cash assistance** was provided to over 700 families to enable them construct and improve their own shelters.
- ▶ **Development in progress in Alemwach site** in Amhara region in collaboration with regional and local authorities, UNHCR/RRS engaged Amhara Local Enterprises to conduct surveys in the site.
- ▶ Women, girls, and other at-risk groups were consulted to ensure the design, building and maintenance of shelters are conducted in manner that **ensures protection and reduces the risk of Gender-based violence (GBV)**.
- ▶ Over 90,500 internally displaced persons (IDPs, IDP Returnees and relocated IDPs) issued with shelters while core relief items (CRIs) were distributed to more than 964,000 IDPs and returnees across 9 regions. **This represents 30% of 3.5M IDPs reached by ES/NFI Cluster.**

## CHALLENGES

- ▶ The shelter gap remains wide, with 60% of the refugee households continuing to be accommodated in inadequate shelters, which can lead to protection risks, such as GBV and health risks.
- ▶ Due to lack of resources, there is inadequate infrastructures in the refugee camps and sites, with most access roads, drainage and public infrastructures requiring improvement.
- ▶ Urgent shelter response is needed for refugees and IDPs affected by conflict as well as those awaiting shelter solutions in reception centers, including in the Somali Region.

## WAY FORWARD

- ▶ Strengthen collaboration with RRS, national authorities, UN-Habitat, and other partners to provide better housing and settlement solutions, in line with national plans.
- ▶ Development of a detailed settlement database for all refugee sites through site mapping exercise.
- ▶ Scale up the use of cash-based intervention (CBI) for shelter provision and strengthen a community-based approach to shelter solutions.
- ▶ Mainstream GBV prevention, risk mitigation, and response through shelter interventions.



**REFUGEE RESPONSE**

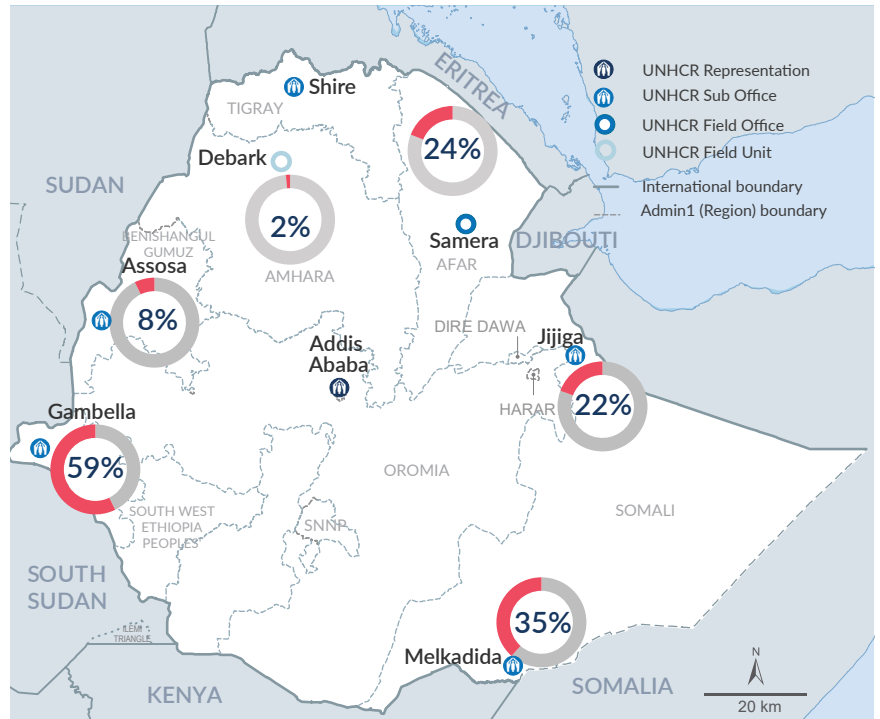


Standard 100%

- Acceptable (≥95%)
- Unacceptable (94% - 80%)
- Critical (≤79%)



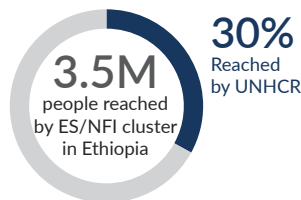
% of refugees HHs living in adequate dwelling by location



The boundaries and names shown and the designations used on this map do not imply official endorsement or acceptance by the United Nations. \* Final boundary between the Republic of Sudan and the Republic of South Sudan; and between Ethiopia and Somalia has not yet been determined.

**IDP RESPONSE**

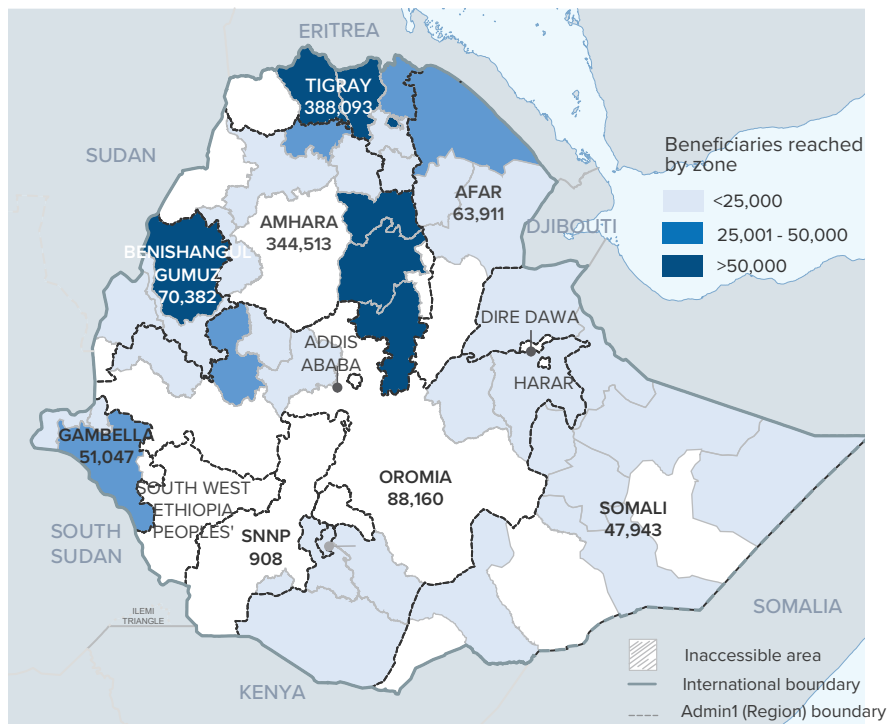
**1,054,957**  
Individuals reached by UNHCR ES/NFI Assistance  
**210,991**  
Households



**Type of beneficiaries reached**

- 868,717 (83%)** Conflict IDPs
- 74,516 (7%)** IDP returnees
- 35,457 (3%)** Drought affected IDPs
- 51,047 (5%)** Flood affected IDPs
- 25,220 (2%)** Host community
- 58,376 (6%)** Persons with specific needs
- 34,380 (3%)** Beneficiaries (out of the total) received cash for repair, reconstruction and cash for rent

IDP individuals reached by UNHCR in 2022



**With thanks to our donors:**



Algeria | Armenia | Bulgaria | Canada | CERF | Estonia | Finland | Iceland | Liechtenstein | Lithuania | Luxembourg | Monaco | Montenegro | Peru | Qatar | Republic of Korea | Saudi Arabia | Singapore | Thailand | Turkey | Uruguay | Private donors | Band Aid | LDS Charities | EHF

For more, please contact : Silas Omondi, Shelter Officer, omondi@unhcr.org | Catherine Melike Trigg, Senior External Relations Officer, trigg@unhcr.org