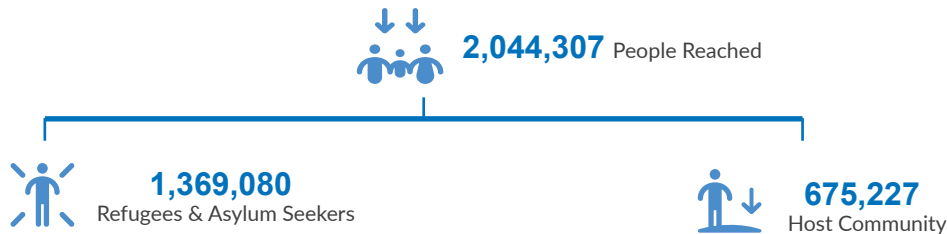




INTRODUCTION

The 2022 End of Year Inter-Sector dashboard is a compilation of the cumulative and sector-specific results achieved by partners under the Uganda Country Refugee Response Plan (UCRRP) in 2022. The Dashboard includes key achievements, an overview of populations reached as well as funds available per sector.

Total Population reached in 2022



PROTECTION

Refugee Status Determination (RSD), Legal and Physical Protection

- Uganda maintained a flexible approach to asylum. **94%** of the refugees (mainly South Sudanese and Congolese) who enter Uganda via the formal border entry points were recognized as prima facie refugees.
- Refugees received the same treatment as nationals in relation to access to courts of law and legal assistance under applicable laws of Uganda. A total of **217,000** refugees received legal assistance, surpassing the 2022 target of **77,000**.

Durable Solutions

- Repatriation was facilitated for **6,906** refugees to Burundi.
- 103%** submissions for resettlement against the target of **3,700**.
- 1,747** individuals departed on resettlement, and **161** persons departed through complementary pathways (family reunification, scholarships, and labor pathways).

Gender Based Violence (GBV) and Child Protection

- 17,434** children at risk, including Unaccompanied and Separated Children (UASC), were supported through the UNHCR Best Interests Procedure (BIP). **15,338** UASC were placed in appropriate alternative care following proper comprehensive assessments.
- 95% (5,574)** of GBV incidents reported received psychosocial services; **22%** with health/medical services, **20%** with legal assistance, **14%** safety and security based on need. **394,491** people were reached with GBV awareness raising messages, which represents **70%** of the annual target.

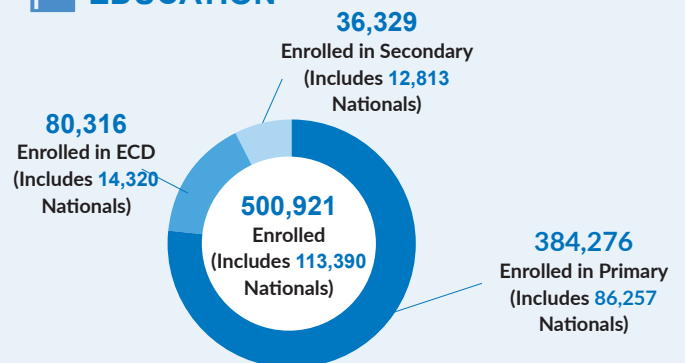


HEALTH & NUTRITION

- A total of **2.3Million** consultations at the health facilities were conducted (**78%** Refugees & **24%** Nationals), with an average of **56** consultations per clinician per day.
- 96%** of births were assisted by a healthcare professional. There was a total of **29,000** births reported.
- 85%** of the **101** health facilities in the refugee hosting districts were coded by the Ministry of Health.



EDUCATION



- 3,700** teachers were employed by partners to operationalize the Education Response Plan (ERP II) for Refugees and Host Communities in Uganda.
- 460** refugees accessed scholarships for higher education.



ENERGY & ENVIRONMENT

- The **Sustainable Energy Response Plan (SERP)** for refugees and host communities 2022-2025 was launched in August 2022.
- 7 million** seedlings were distributed to establish and maintain woodlots and restore degraded areas of selected Central Forest Reserves (CFRs). **250** hectares of **3** degraded CFRs, a space the size of **350** football fields, were replanted.



- **34,000** households were supported with energy saving stoves, bringing the access to improved cooking technologies to **24%** at the end of 2022.

WATER, SANITATION & HYGIENE (WASH)

- On average, **26 million litres** of water was provided for refugees and the host community each day for 365 days.
- Water access was maintained at an average of **14 litres** per person per day in the Southwest and **19 litres per day** in the north for settlements receiving new arrivals against the emergency threshold of **7.5 – 15 litres** per day. The latrine per persons ratio was kept within the target of **1:50**.
- **Four** water systems have been integrated into the national water systems. This has reduced the cost of providing water from **\$1 to \$0.3** per household per month.



LIVELIHOODS & ECONOMIC INCLUSION

- **95,000** individuals were trained on good agronomic practices, of which **13,000** were nationals. **14,997 acres** of arable land were accessed by refugees for farming.
- **47,000** individuals were trained on business management skills for micro-entrepreneurs, where **14,000** individuals were nationals.
- **72,000** individuals participated in farmer associations, where **19,000** individuals were nationals, to help foster peaceful co-existence.



EMERGENCY RESPONSE

- **No refugee was infected** during the 2022 Uganda Ebola outbreak, even when Kampala and some of the host districts were affected. Sensitization to help protect refugees was stepped up.
- **Nyakabande Holding Area was quickly created in April 2022**, as a temporary arrangement to accommodate the high number of refugees, and **closed in October 2022**. Nyakabande Holding Area and Transit Centre had received **74,204** refugees in 2022.

UCRRP STRATEGIC OBJECTIVES

1. Maintain asylum space, preserve access to territory and adhere to international protection standards.
2. Ensure life-saving humanitarian needs are met, with attention to any specific needs.
3. Enable a healthy natural environment and provide access to improved social services through national systems where possible.
4. Foster peaceful co-existence and self reliance, by creating a conducive environment for livelihoods opportunities.
5. Provide access to durable solutions, including voluntary return or third country solutions.

LINKS TO THE 2022 END OF YEAR SECTOR DASHBOARDS

Below are the links to the Sector UCRRP 2022 End of Year Dashboards. These include detailed information on the results achieved by partners, as well as the challenges faced throughout 2022.



Food Security



Livelihood & Resilience



Health & Nutrition



Child Protection



GBV



Protection



Environment & Energy



Shelter Settlement & NFIs



WASH



Education



UCRRP Planning Figures and Funding Update



1.5 M
Targeted Population



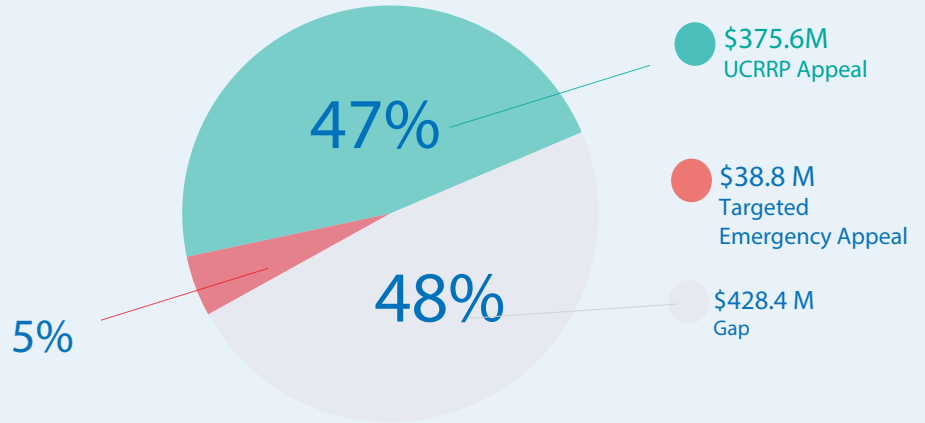
69
Appealing Partners



\$804 M
Total Appeal

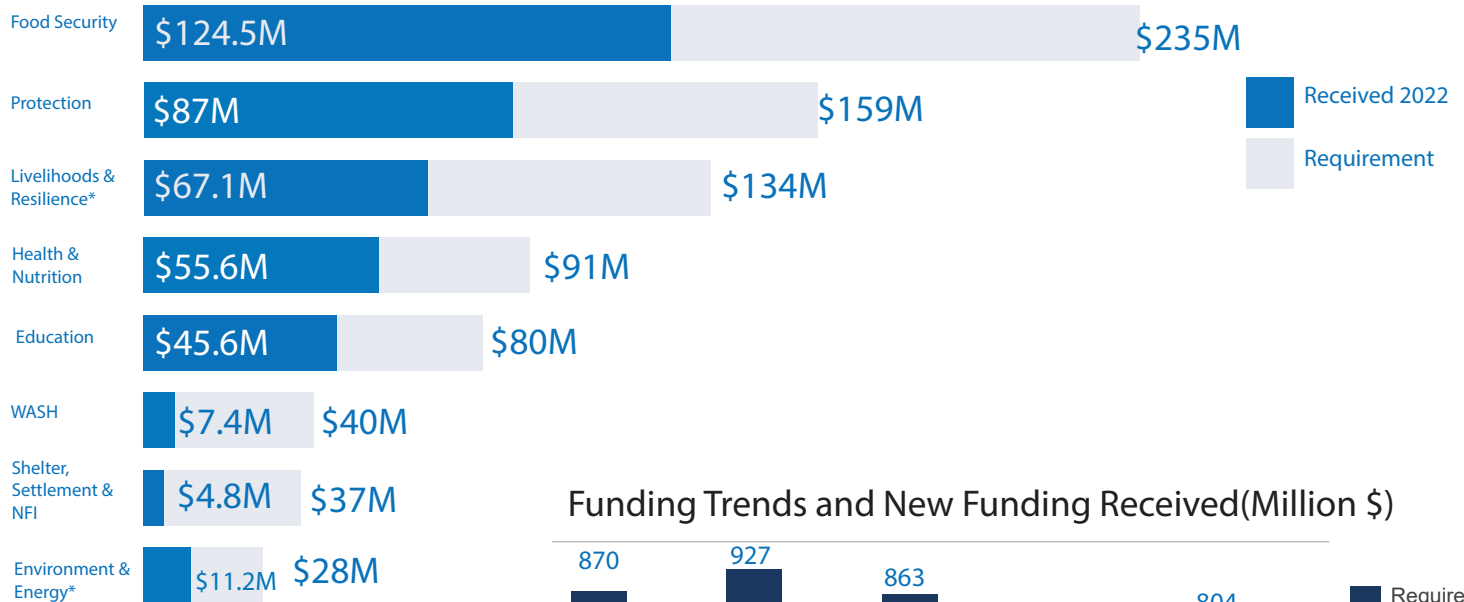


\$414.4M
Received in 2022



In 2022, **52%** of the **\$804M** appeal was made available to support regular programming. **\$38.7M** was made available to support the emergency response. **\$21.2M** was carry over from 2021 and **\$393.2M** was received in 2022. In total, **\$414.4M** was made available.

2022 Funding Received and allocation per sector (\$)



Funding Trends and New Funding Received (Million \$)

