



ENVIRONMENT OVERVIEW

OUTCOME 1: POCs access an environment where natural resources are managed through sustainable settlement land use plans

Results Analysis

In Quarter 1 2023, only 4.41 hectares of new woodlots out of the target 1,000ha of woodlots were established representing 0.44%. These were all established in the Southwest and non in West Nile and SSD situation. The rate of woodlot establishment has been low because of late finalisation of the PPAs which delayed implementation. In West Nile, the some of the highly demanded tree seedlings such as teak had not matured in the nurseries to be ready for transplanting. In addition, a total of 167 hectares of existing woodlots were maintained through gap filling and weeding all of which was carried out in the southwest. In the nurseries of the National Forestry Authority (NFA), approximately 3.9 million tree seedlings were ready for transplanting although by end of March, the rains had not stabilised enough in many areas for increased uptake. Furthermore, woodlots established by partners within the settlements in southwest since 2019 were mapped with support from Shelter Settlement and Non-Food Items (SSNFI) and the results show 392.55ha, 131ha and 114.9ha for Kyangwali, Rwamwanja and Kyaka II, respectively.

Challenges

Key challenges to implementation included: delayed finalisation of the PPAs, the considerable reduction in budgetary allocation towards the sector which happened after the seedling requests had already been consolidated for NFA to commence seedling production processes and because the first quarter is mostly a dry season and limited tree growing can take place.

Key Priorities

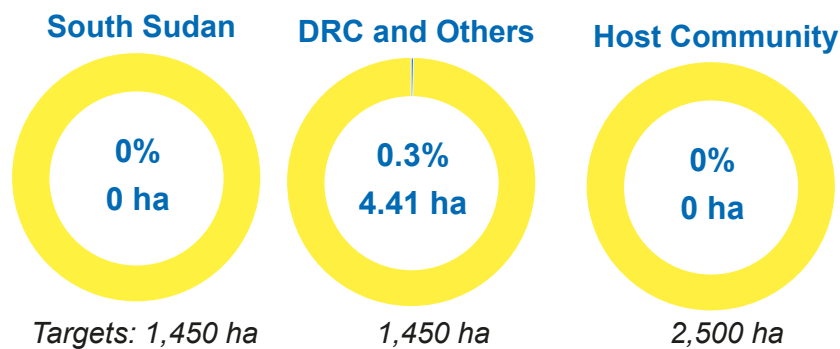
First season tree growing will continue all through to June/July for all the tree seedlings are ready for transplanting. Restoration of degraded parts of targeted Central Forest Reserves will be carried out. Partners in West Nile will be handing over some woodlots which they have been maintaining to landlords for subsequent management to maturity. Mapping of woodlots established in West Nile.

KEY PERFORMANCE INDICATORS AND ACTIVITY OUTPUTS

Output 1: Natural resources restored and managed sustainably

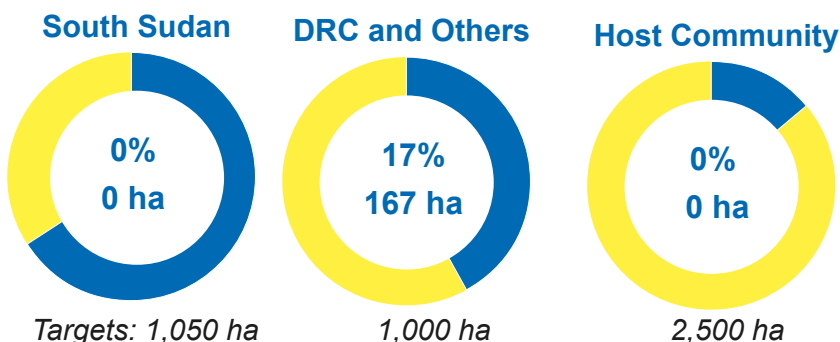
- 1 Commemorations: World Wetlands Day
- 49 Environment awareness sessions held
- 1 Radio shows

Hectares woodlots established

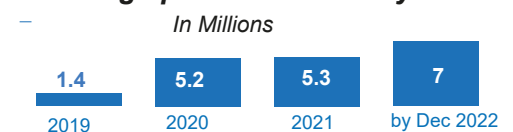


3,900,000 Assorted tree seedlings raised
20,000 Seedlings distributed

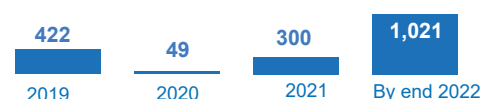
Hectares woodlots maintained



Seedlings planted over the years



Area restored over the years





ENERGY OVERVIEW

OUTCOME 2: POCs adopt and use affordable, reliable, sustainable and modern energy

Results Analysis

By end of March 2022, a total of 5,133 energy saving stoves were disseminated among refugee households, 6.1% (312) of which were disseminated among Congolese refugees and the rest in West Nile. This represents 24.4% of the target of 21,064 stoves planned by partners for 2023. Six (6) institutional energy saving cookstoves were also constructed among institutions, 4 in the host community and 2 in SSD situation. These cookstoves is aimed at reducing the amount of fuel used for cooking therefore reducing pressure on existing tree resources in refugee hosting areas. Furthermore, 2 tonnes of briquettes were produced for cooking. Five (5) technicians were trained in repair of solar products in West Nile.

Challenges

Key challenges include delayed finalisation of the PPAs, the considerable reduction in budgetary allocation towards the sector where some settlements such as Lobule were assigned no targets. The operation continues to receive new arrivals even with dwindling resources.

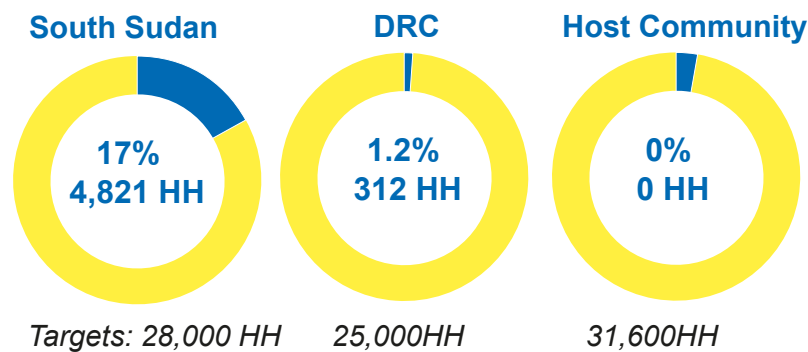
Key Priorities

Solarisation of health centres, schools, promotion of improved cookstoves, mapping of E&E interventions, awareness creation, and solar off-grid solutions for socio-economic transformation.

KEY PERFORMANCE INDICATORS AND ACTIVITY OUTPUTS

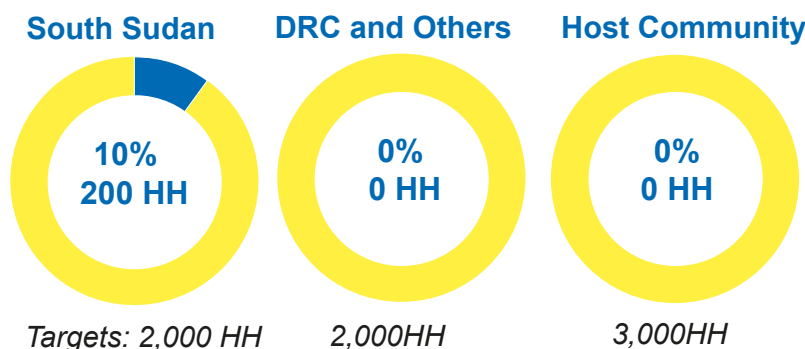
Access to energy efficient technologies and fuels for cooking

Households supported with clean and/or energy efficient technologies for cooking



- 5,133** HHs supported with improved biomass energy- saving stoves.
- 2,000kg** of briquettes produced
- 284** Local stove artisans trained
- 266** Generators in operation

Households using clean and alternative fuels for cooking





INSTITUTIONAL STRENGTHENING OVERVIEW

OUTCOME 3: Natural resource management and settlement planning integrated across all sectors



Inter-sector coordination

- 2 WorkGrEEEn and SSNFI inter-sector Coordination monthly meetings held.
- 3 ECCDPG (Environment & Climate Change Development Partners Group) monthly coordination meetings held.



Water, Sanitation & Hygiene

46% of water pumped through renewable energy (*as of March 2023*).

2.9MW of installed renewable energy for water supply.



Health & Nutrition

0.6MW of solar PV in 10 health facilities installed of installed renewable energy for water supply.



Education

5 Schools solarised.

Funding



23
Partners



\$24M
Total Required

\$0.7M

Received 3%

\$23.3M

Gap 97%

Partners

Agency for Accelerated Regional Development (AFARD)| ALIGHT| African Women and Youth Action for Development (AWYAD) | Catholic Relief Services (CRS) | Child Fund International (CFI)| DanChurchAid (DCA) | Danish Refugee Council (DRC) | District Local Government (DLG) | Food and Agriculture Organization of the United Nations (FAO) | Finnish Mission Uganda (FIDA/FMU)| International Council for Research in Agroforestry Uganda (ICRAF) | International Organisation of Migration (IOM)| Joint Energy and Environment Projects (JEEP) | Joint Effort to Save the Environment (JESE) | Lutheran World Federation (LWF) | Mercy Corps (MC) | National Forestry Authority (NFA) | Nsamizi Training Institute for Social Development (Nsamizi) | Oxford Committee for Famine Relief (Oxfam) | Uganda Red Cross Society (URSC) | Rural Initiative for Community Empowerment in West Nile (RICE-WN) | Raising Gabdho Foundation (RGF) | Save the Children International (SCI) | Welthungerhilfe (WHH) |

Operational Presence

Yumbe

AFARD, Alight, Caritas, DCA, FIDA/FMU, ICRAF, IOM, MC, SCI, UNHCR, WFP, WHH, WVI

Koboko

DCA, UNHCR

Madi Okollo & Terego

DCA, DRC, ICRAF, SCI, WVI, ZOA, UNHCR

Kikuube

CRS, Nsamizi, UNHCR

Kyegegwa

AWYAD, JESE, Nsamizi, Oxfam, UNHCR, WFP

Kamwenge

AWYAD, LWF, Nsamizi, UNHCR, WFP

Isingiro

JESE, Nsamizi, UNHCR

Obongi

DRC, LWF, URCS, UNHCR

Lamwo

DRC, FAO, LWF

Adjumani

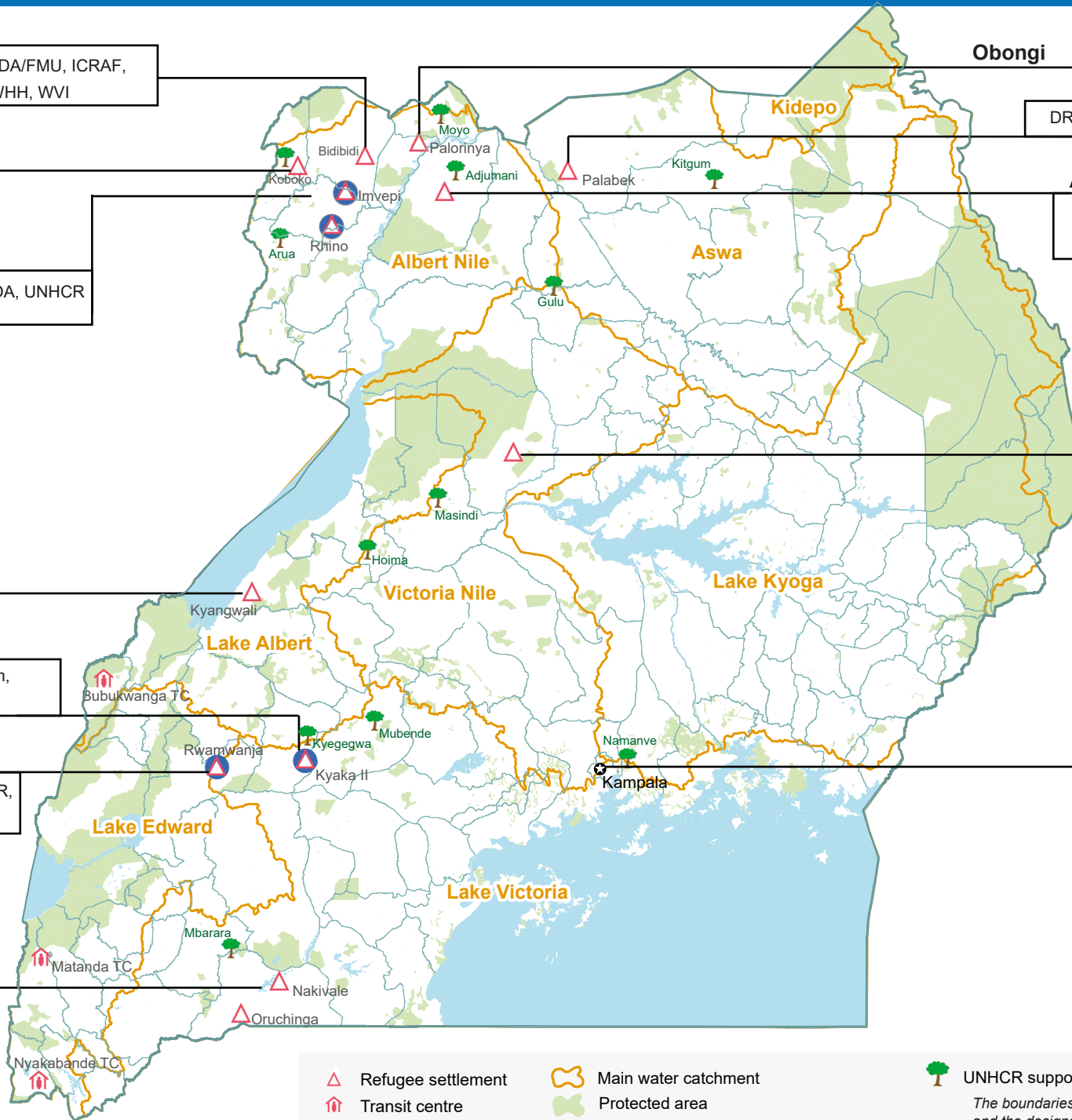
DRC, ICRAF, JEEP, LWF, UNHCR, WVI

Kiryandongo

DCA, FAO, ICRAF, SCI, UNHCR

Kampala

RGF, UNHCR



Refugee settlement	Main water catchment	UNHCR supported NFA nurseries
Transit centre	Protected area	<i>The boundaries and names shown and the designations on this map do not imply official endorsement or acceptance by the United Nations</i>
Capital city	Refugee settlement whose site plans are updated with protected areas and Woodlots	
District boundary		