

100,000
Estimated arrivals

Estimated arrivals

21 101
Returnees arrivals

Returnees arrivals

27
Potential entry points

Potential entry points

58%
Returnees are women

Returnees are women

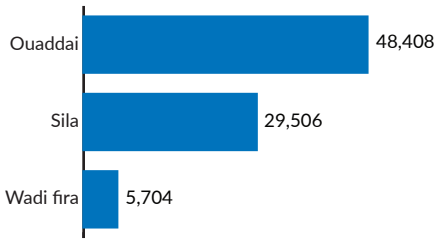
83,618
Fixed new arrivals

Fixed new arrivals

24 949
Household

Household

Fixed new arrivals per provinces



23,088
Pre-registered

Pre-registered

6,721
Household

Household

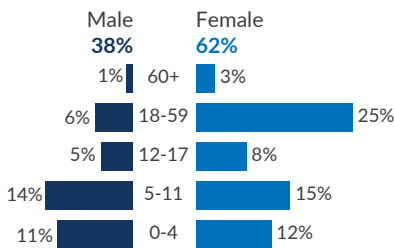
65%
pre-registered are children

pre-registered are children

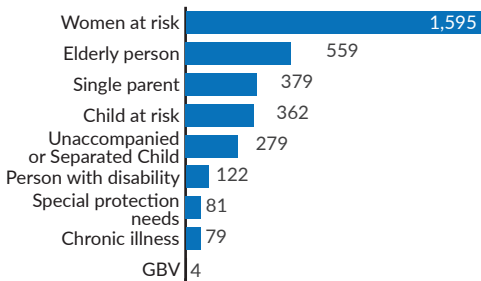
15%
pre-registered have specific needs

pre-registered have specific needs

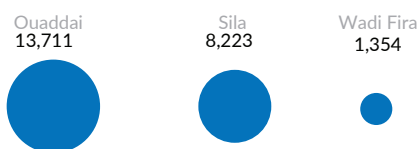
Age and gender breakdown of pre-registered



Pre-registered people with specific needs



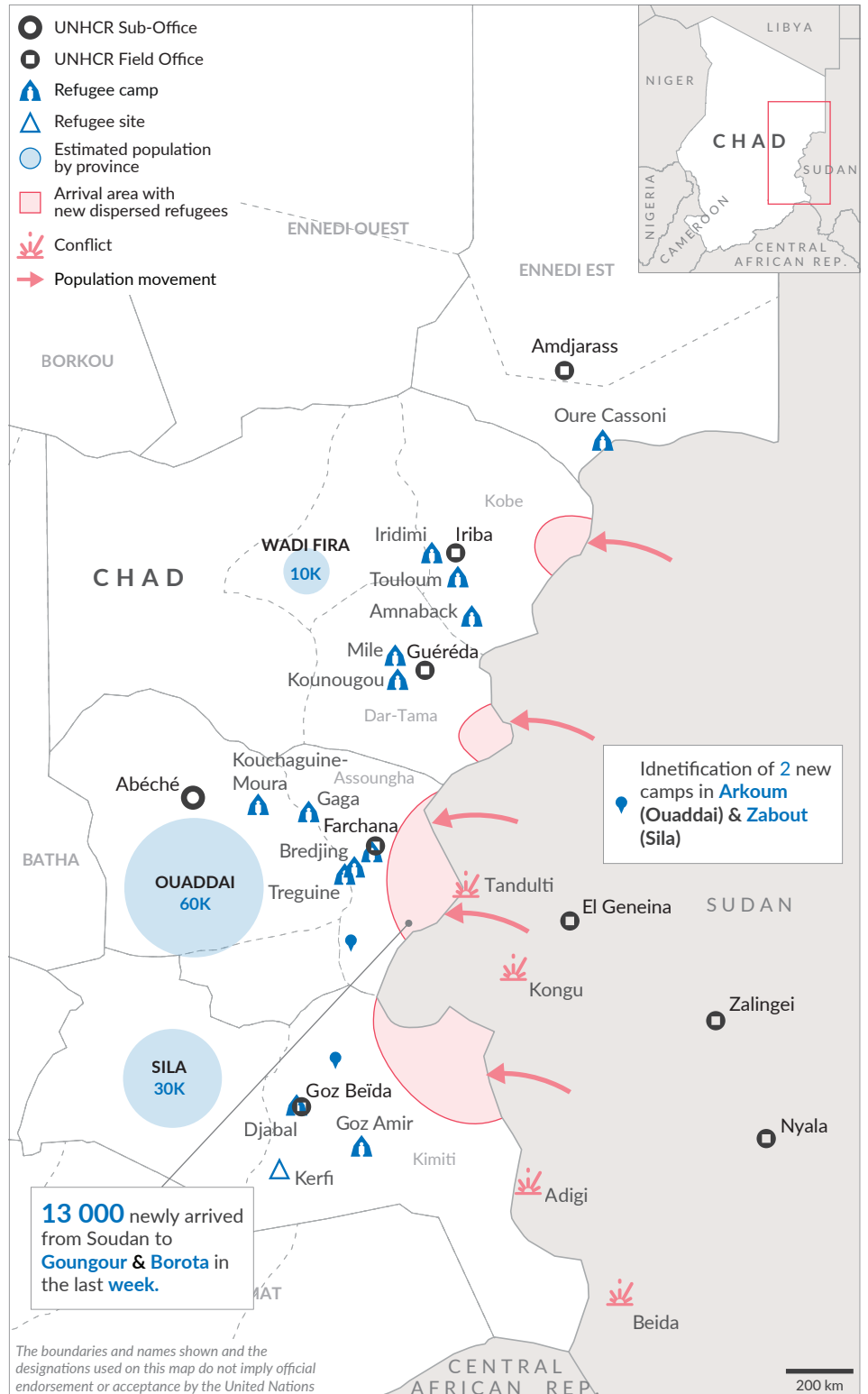
Pre-registered people per provinces



Context

Since the beginning of the conflict in Sudan on 15 April 2023, UNHCR has registered an **influx of Sudanese refugees and Chadian returnees from Darfur** at border entry points in eastern Chad.

UNHCR field teams in Ouaddai, Sila and Wadi Fira provinces are working with the Chadian government, CNARR, local authorities, and partners to continue **monitoring the situation at the border, and to receive, protect and respond to the urgent humanitarian needs** of refugees and returnees fleeing the violence.



10,793 **2,649**
Relocated Refugees Households

33 **13%**
Number of convoys Persons fixed have been relocated

Relocation WADI FIRI (Mile & Kounougou)

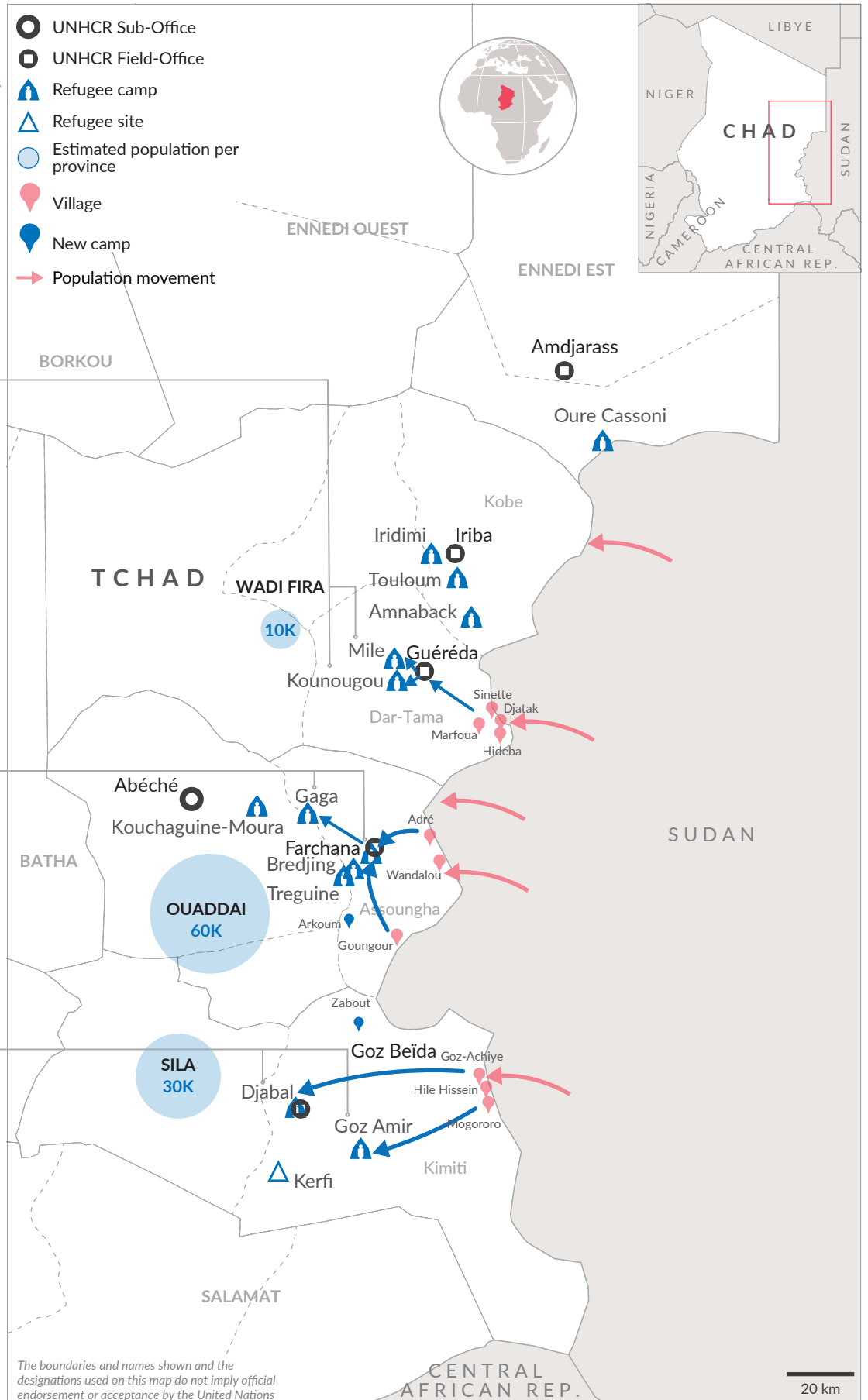
Village	Camp	Individuals
Hideba	Mile	381
Marfoua	Mile	300
Sinette	Mile	174
Hideba	Kounougou	652
Sinette	Kounougou	352
Djatak	Kounougou	314
Total		2,173

Relocation OUADDAI (Gaga & Farchana)

Village	Camp	Individuals
Wandalou	Gaga	3,553
Goungour	Gaga	2,908
Adré	Gaga	143
Koufroun	Gaga	16
Total		6,620

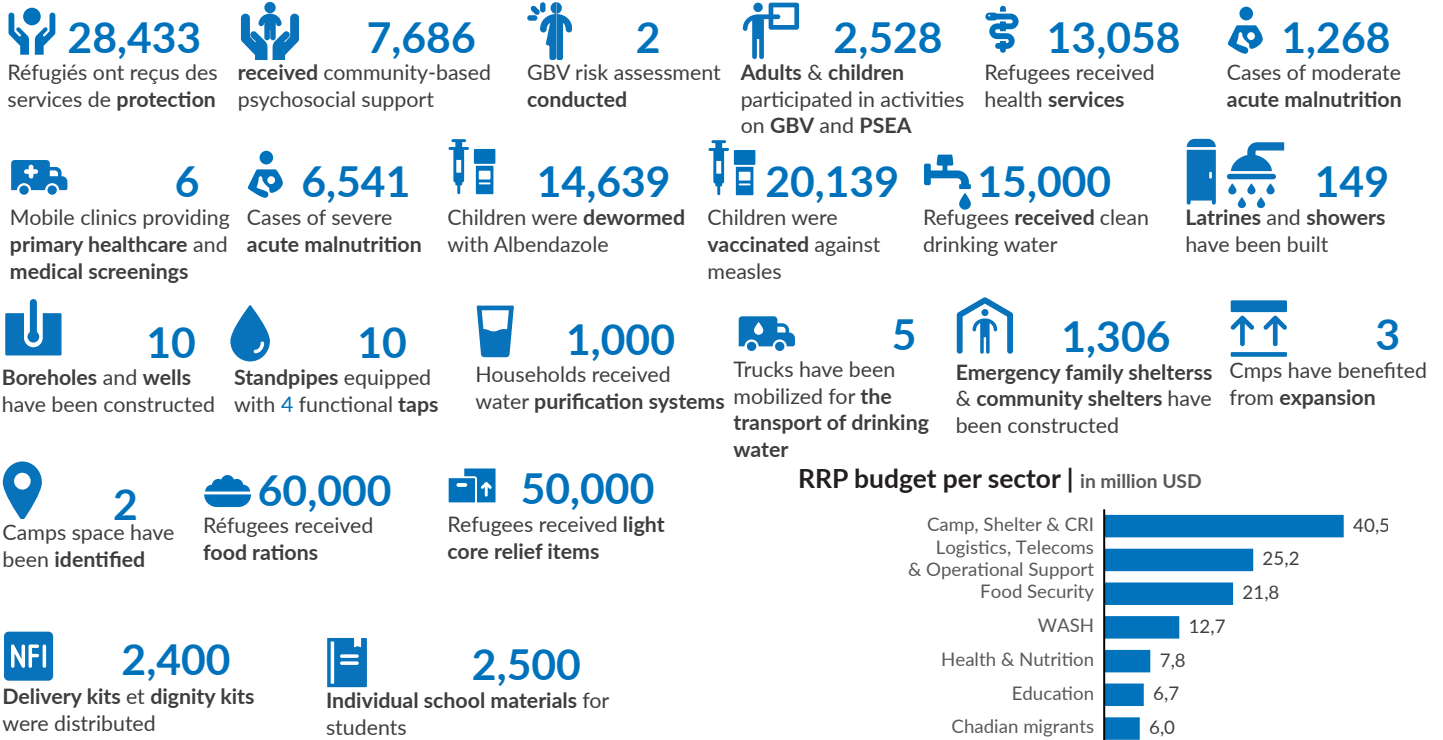
Relocation SILA (Goz Amir & Djabal)

Village	Camp	Individuals
Hile Hissein	Goz Amir	569
Goz Achyie	Goz Amir	500
Mogororo	Goz Amir	237
Anderessa	Djabal	607
Mogororo	Djabal	87
Total		2,000



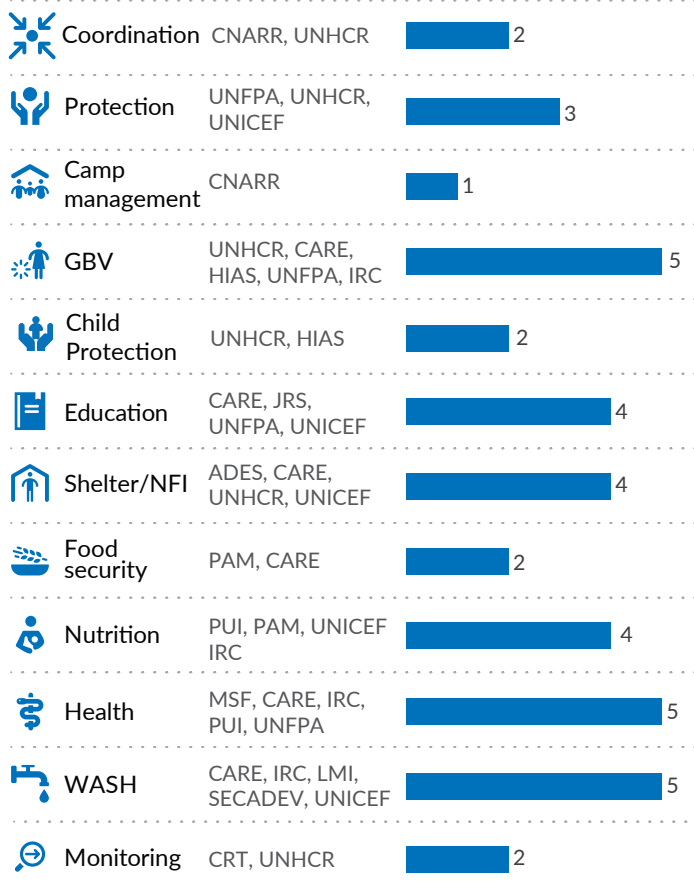
The relocations are only carried out from host villages to the camps.

Sources: UNHCR, CNARR, OSM



129.8M
Total budget allocated

Partner presence per sector



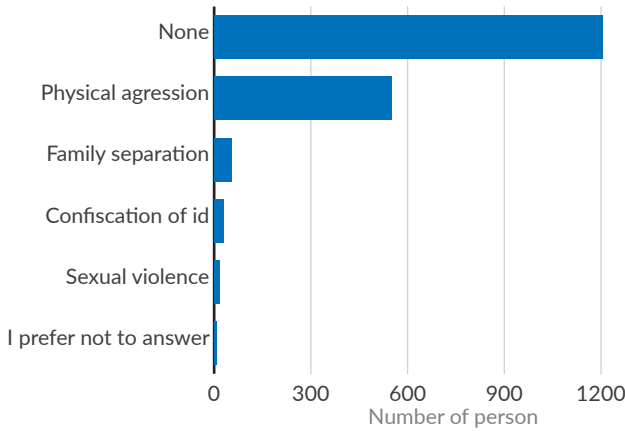
Acronym of partner

ADES	Economic and Social Development Agency
CARE	CARE International
CNARR	National Commission for the Reception and Reintegration of Refugees and Returnees
CRT	Chad Red Cross
HIAS	Hebrew Immigrant Aid Society
IRC	International Rescue Committee
JRS	Jesuit Refugee Service
LMI	Läkarmissionen International
PAM	United Nations World Food Programme
PUI	Première Urgence Internationale
SECADEV	Secours Catholique et Développement
UNFPA	United Nations Population Fund
UNHCR	United Nations High Commissioner for Refugees
UNICEF	United Nations Children's Fund

Sources: UNHCR, PAM, UNICEF, UNFPA & Partners

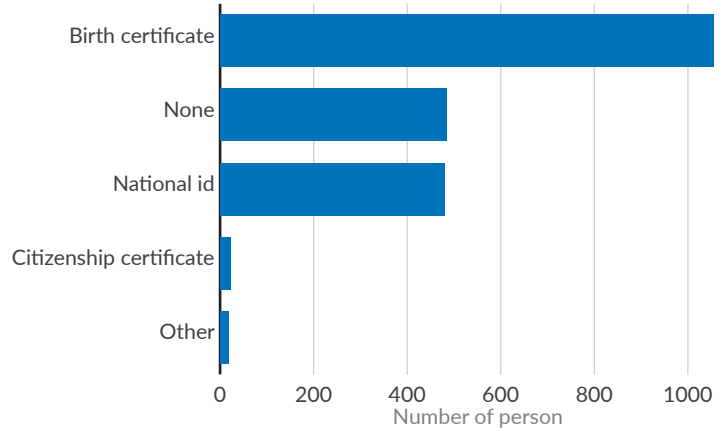
ACCESS TO TERRITORY AND ASYLUM

What types of identified dangers/threats are you exposed to?



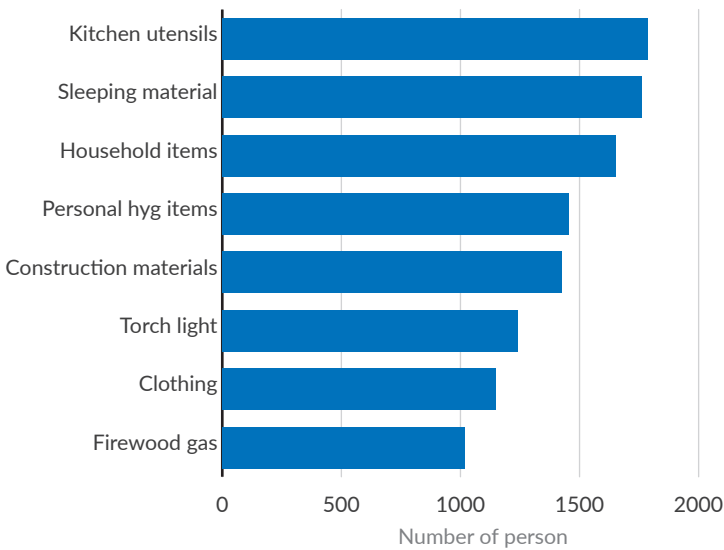
DOCUMENTATION

What type of individual document do you possess?



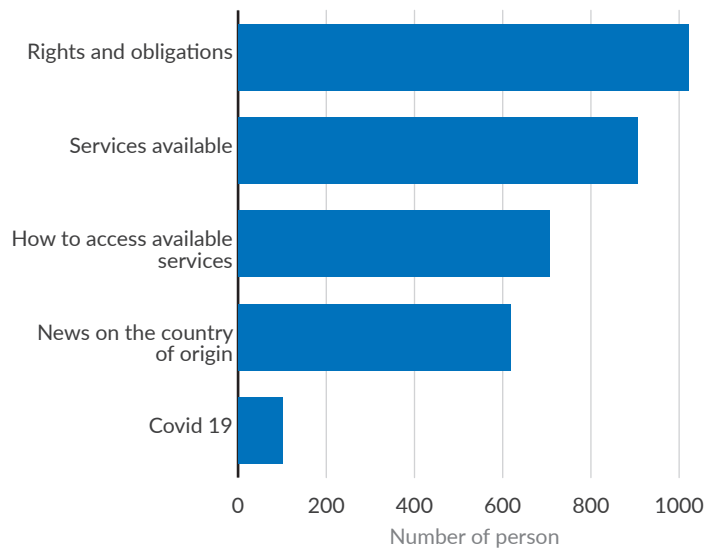
BASIC NEEDS AND ESSENTIAL SERVICES

What category of items does your family need the most?



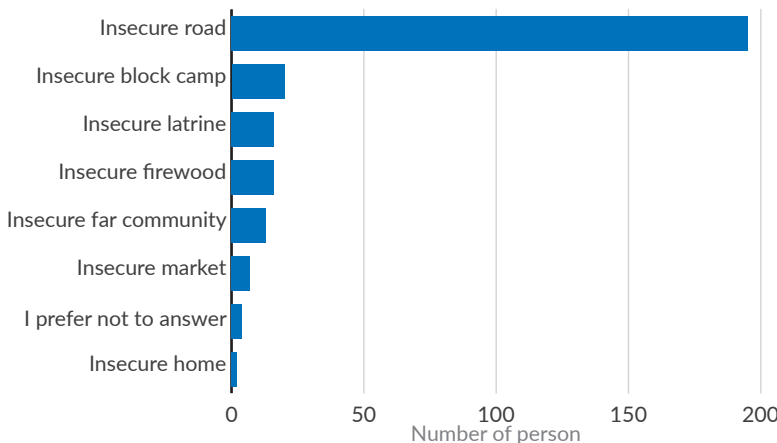
COMMUNITY ENGAGEMENT

What type of information would you like to receive from humanitarian workers and authorities?



GENDER BASED VIOLENCE

Are there specific places in the host community where you do not feel safe?



The Project 21 is a regional protection monitoring system, launched in 2020 to address gaps in data collection and analysis on protection in West and Central Africa. The inter-agency project mobilizes partners to collect a set of data using harmonized tools and a common methodology to generate joint analysis of the situation, risks, and protection trends. As of 25 May 2023, 1,830 newly arrived refugees have been interviewed in Chad for the sudanese emergency. This represents a subset of the collected data.

Sources: UNHCR, CRT 'P21'