

CASH FOR WORK FOR SOCIO-ECONOMIC INCLUSION

Moldova Livelihoods and Inclusion Working Group

28 March 2023

Annabella Skof, UNDP Crisis Bureau



C4W IN CRISIS RESPONSE



Typically as **immediate livelihoods response & household cash injection**

Secondary purposes such as :

- Debris removal
- (Re-)construction of community infrastructure
- Provision of public services
- Social cohesion
- Gender equality and social inclusion
- Environment protection
- Economic recovery



C4W DOS AND DON'TS

- It's a time-bound, temporary intervention
- Don't replace long-term employment, but ideally provide a pathway to it
- Don't create parallel systems
- Harmonized with market conditions and local regulations
- Should be a building block for a next, more developmental phase
- Targeting should be done with the community and local institutions
- Target refugees and host communities

- Ideally, should link/interact/ be compatible with local social protection mechanisms
- Bear in mind potential negative effects to women, youth, local markets
- Spend time selecting and training implementing partners (private sector, government)
- Be alert: C4W for infrastructure: occupational safety and health and liabilities due to injuries and accidents – Decent Work

PUBLIC SERVICES: EDUCATION, CHILDCARE, ETC.



South Africa Presidential Employment Stimulus:

- Basic Education Employment Initiative: school assistants to support in/as languages, IT, reading and literacy champions, child and youth care workers or janitors and maintenance
- Urban public employment: Digitisation of city record, improvements to informal trader spaces, urban food gardens etc
- Care work: after school care, care of vulnerable people – institutionalising community-based care
- Other social employment such as community kitchens, libraries, computer clinics, public art, community safety etc

PUBLIC SERVICES: WASTE MANAGEMENT



- Waste collection & separation
- Solid waste management
- Recycling, composting
- Clean-ups

ENVIRONMENTAL PROTECTION

- Reforestation and forest management

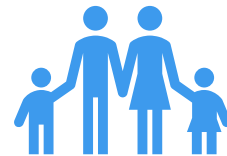


- Catchment management to improve water quality

SOCIAL COHESION & INCLUSION

UNDP Stabilisation Programme Mozambique

- Elderly persons
- Persons with disability
- Women heading households
- Families hosting orphaned children
- Persons with chronic diseases
- Unemployed youth
- Skilled professionals



EXAMPLE OF C4W AS PART OF RECOVERY PROGRAMMING



Nigeria: UNDP Sustainable Waste Management and Environment Protection Programme

- Cash for work on solid waste management targeting women and unemployed youth
- Institutional capacity building of Borno State government agencies involved in waste management
- Community awareness to improved hygiene, waste management and rehabilitation of community waste management infrastructure
- Waste management entrepreneurship and grant support for small scale enterprises



UNDP'S LIVELIHOODS AND ECONOMIC RECOVERY APPROACH



Transformative



Towards green solutions, gender transformational opportunities, inclusion of youth, inclusion of people on the move, and more diverse and resilient economies

Systemic



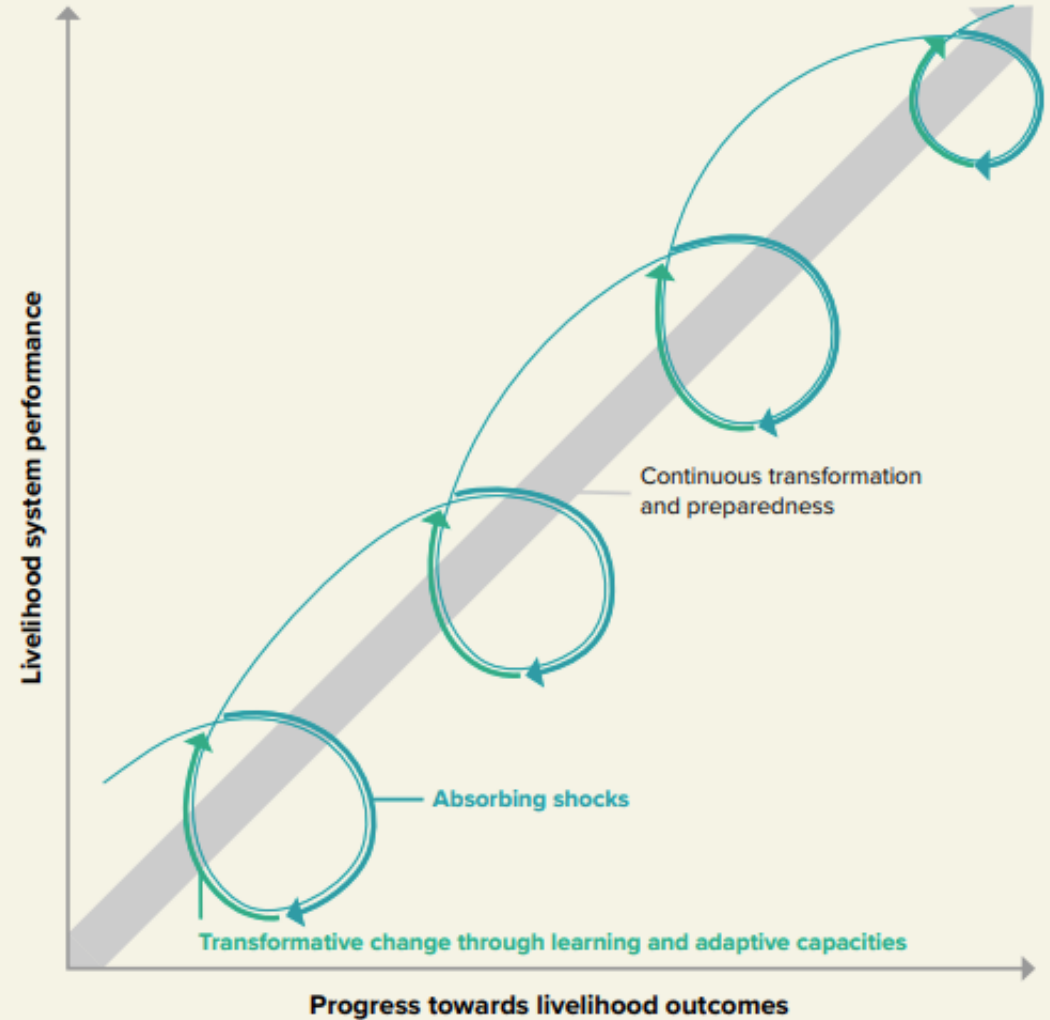
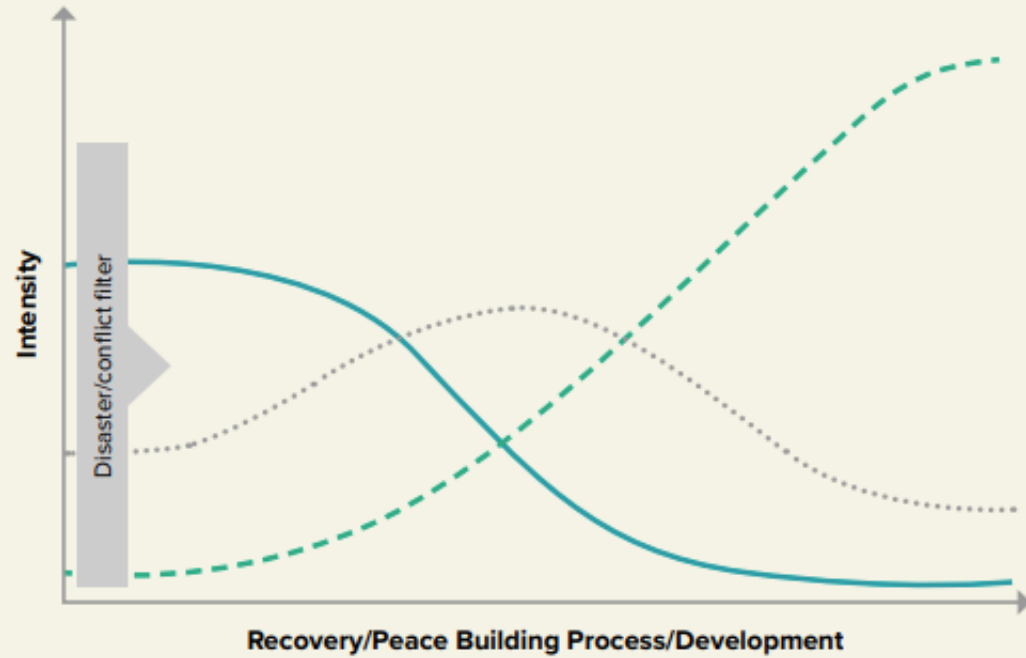
Address the root causes of crisis and structural inequalities that hinder livelihood and economic development to trigger catalytic effects and foster systemic change

Ownership



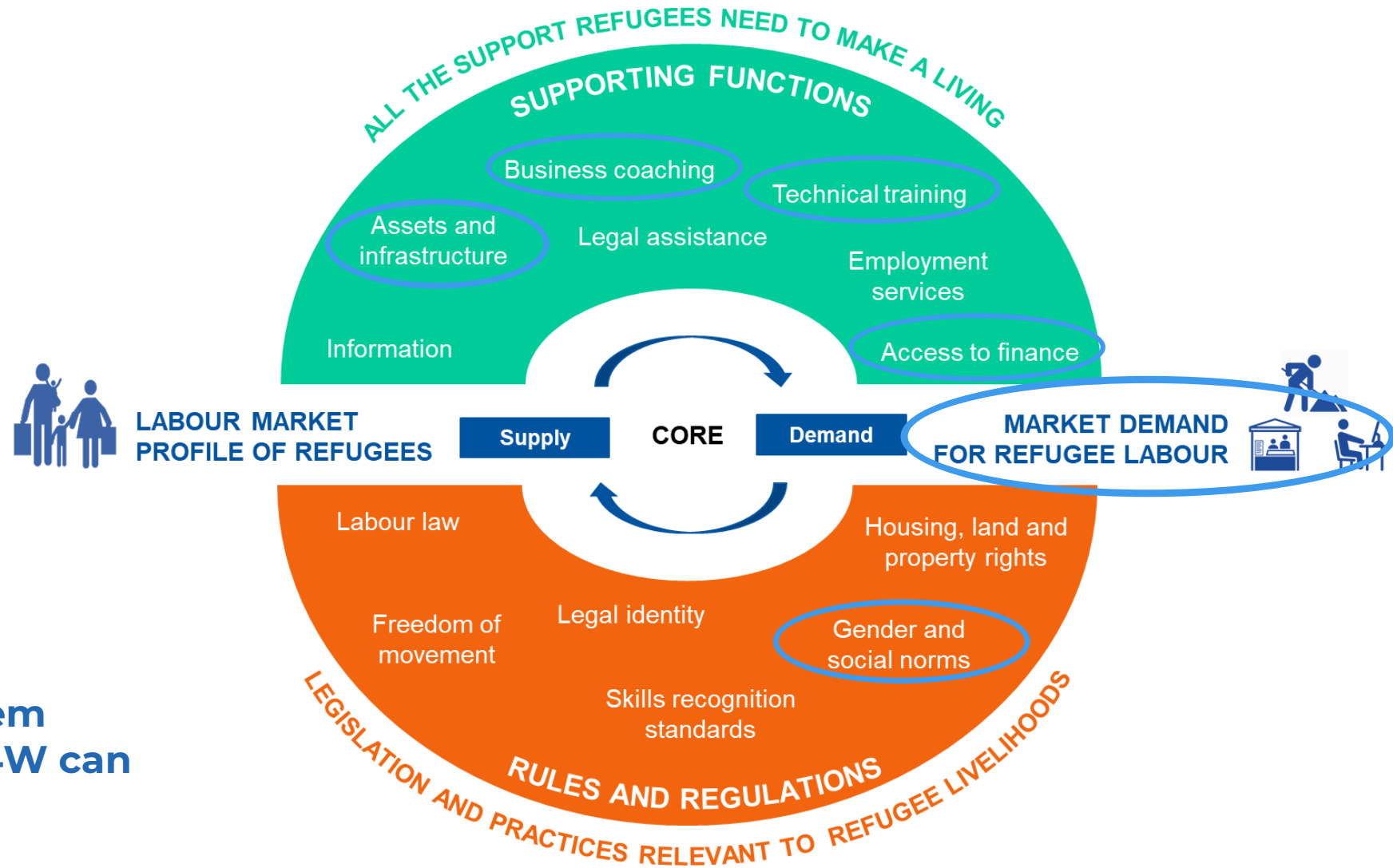
Supporting communities and local and national governments to lead recovery efforts

TRACKS TOWARDS RESILIENCE



- Track A: Stabilizing livelihoods
- Track B: LER for medium to long-term employment, income generation and reintegration (where required)
- - - Track C: Sustainable employment and inclusive economic growth

MARKET SYSTEM APPROACH TO REFUGEES LIVELIHOODS



Market system functions C4W can support

C4W AS PART OF ECONOMIC RECOVERY

- Value chain development
- Agricultural infrastructure:
 - Agricultural feeder roads
 - Land reclamation & terracing
 - Irrigation systems
- Area-based development
- Care work or community engagement to for example address structural barriers to women's economic empowerment
- Data collection for socio-economic impact assessments



C4W AS A VEHICLE FOR COMPLEMENTARY PROGRAMMING

- Fostering financial inclusion
- Skills development
- Insurance
- Inclusion of private sector in C4W
- Private sector development
- Capacity building of local/national government
- Social protection
- Integrated childcare
- Women's economic empowerment

Cash for work **as a means** to achieve multiple outcomes, not as an end in itself

QUESTIONS?

