

Total Arrivals from Ethiopia



22,715

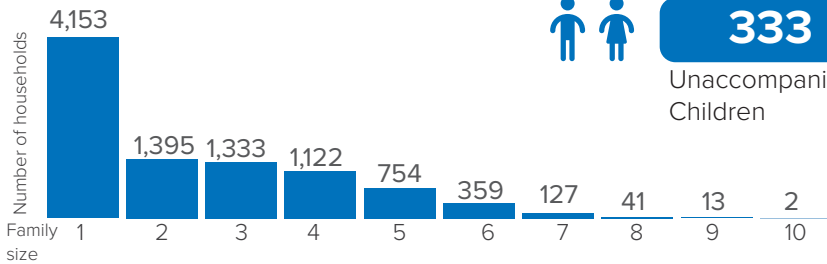
Individuals Registered
Source: UNHCR, COR
As of 30 June 2023



9,299

Households Registered

Family Size



Introduction:

In response to the influx of Ethiopian refugees into eastern Sudan, UNHCR and the Government of Sudan, in collaboration with other partners, opened Tunaydbah refugee camp in Gedaref State on 3 January 2021 to accommodate the refugees relocated from the transit centres at the border to this site. The majority of the refugees in Tunaydbah camp are from the Tigray region of Ethiopia. As of end March 2023, the camp accommodates 22,715 refugees, all of whom are biometrically registered and provided with assistance. The dashboard below presents the population profile for Tunaydbah camp.

Persons With Specific Needs



2,304

Individuals



333

Unaccompanied/Separated Children

Country of Origin

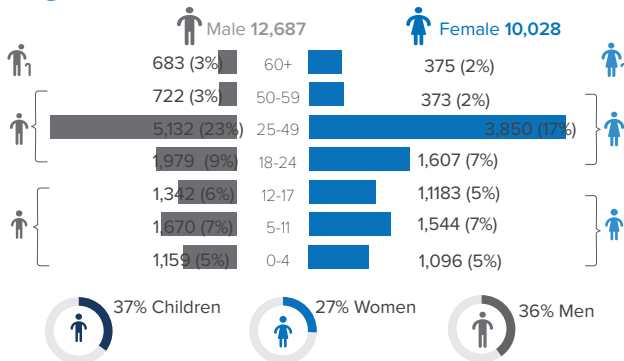
22,667

Ethiopians

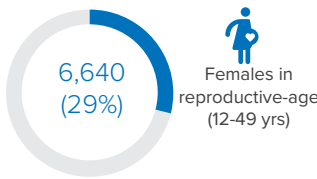
48

Eritreans

Age-Gender Breakdown

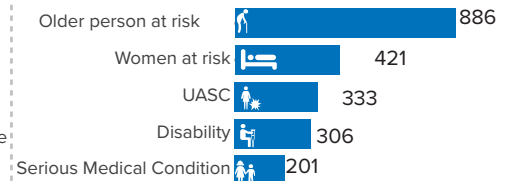


Reproductive- Age Women/Girls



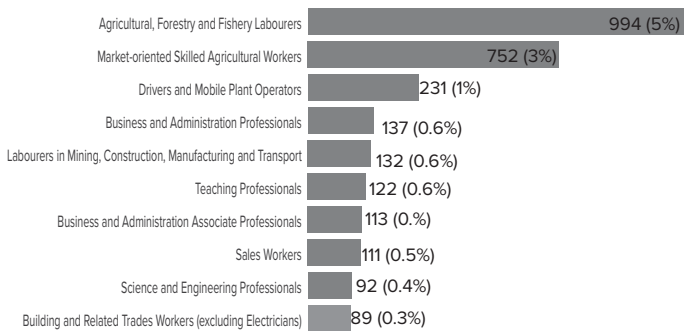
Percentages related to total population

Specific Needs (top 5)



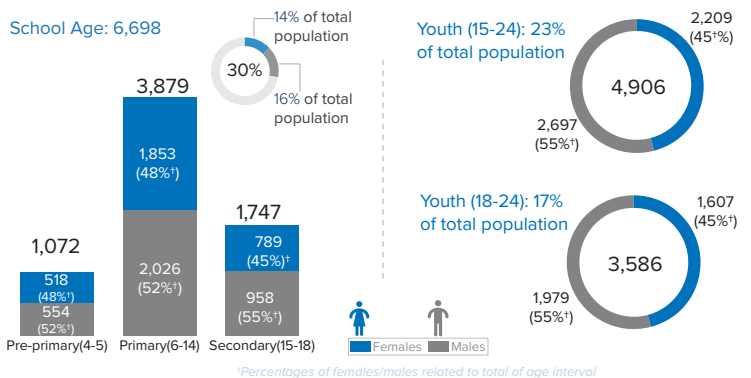
Source: ProGRES v4/Rapp
*UASC: Unaccompanied or separated child

Occupation (Top 10)



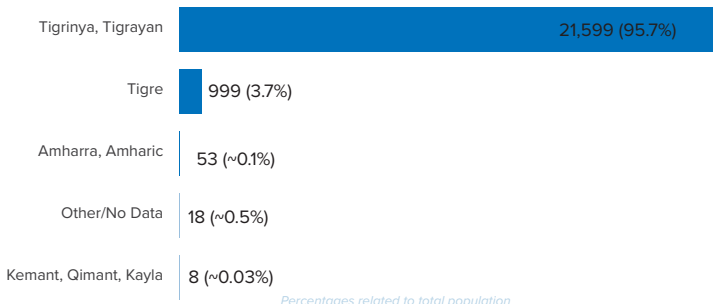
*Occupation and skills of population aged 18 Percentages related to total population and above

School Age Children and Youth



*Percentages of females/males related to total of age interval

Ethnicity (Top 5)



Top 5 Areas of Origin (Ethiopia Admin 3)

