



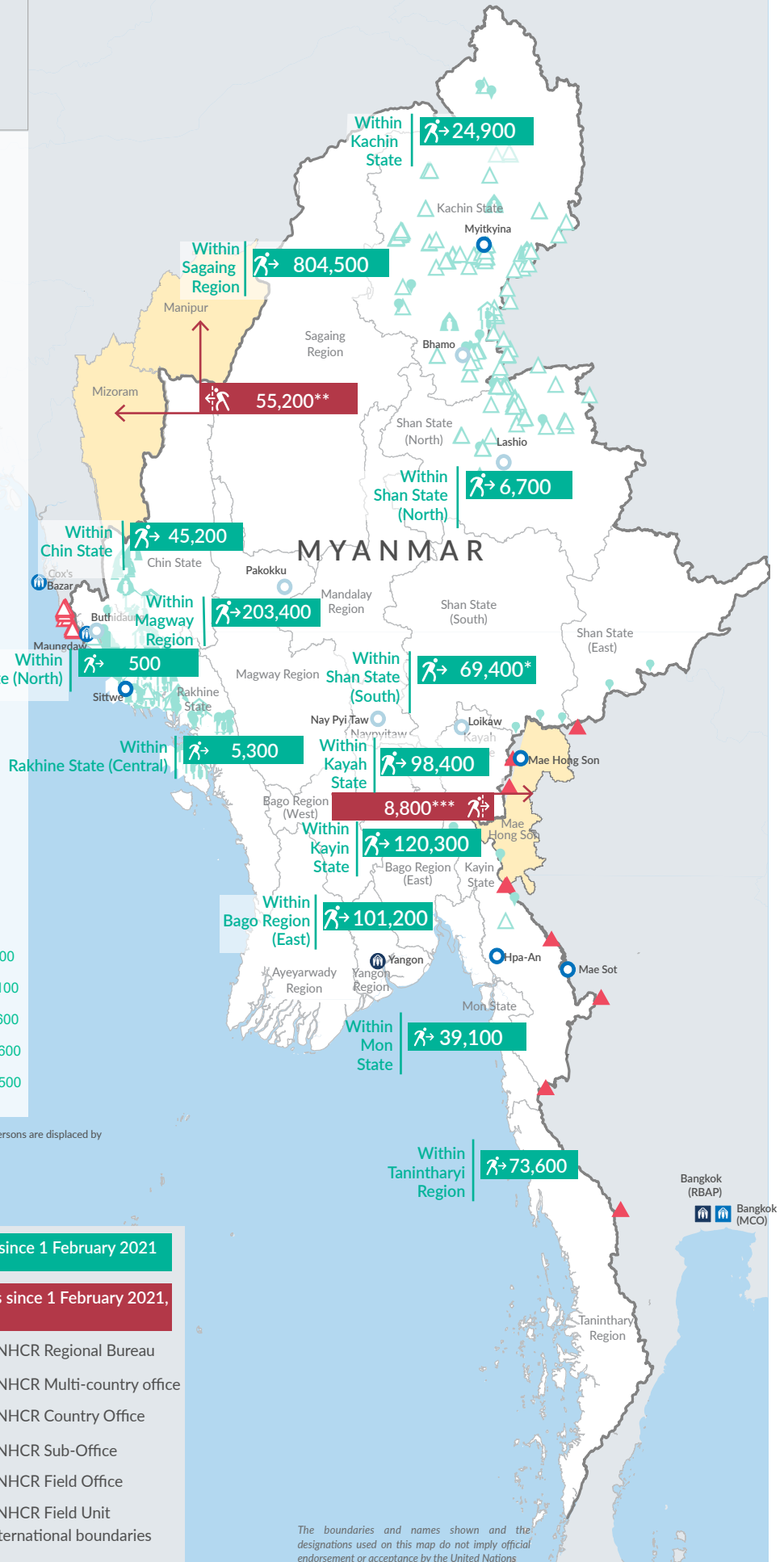
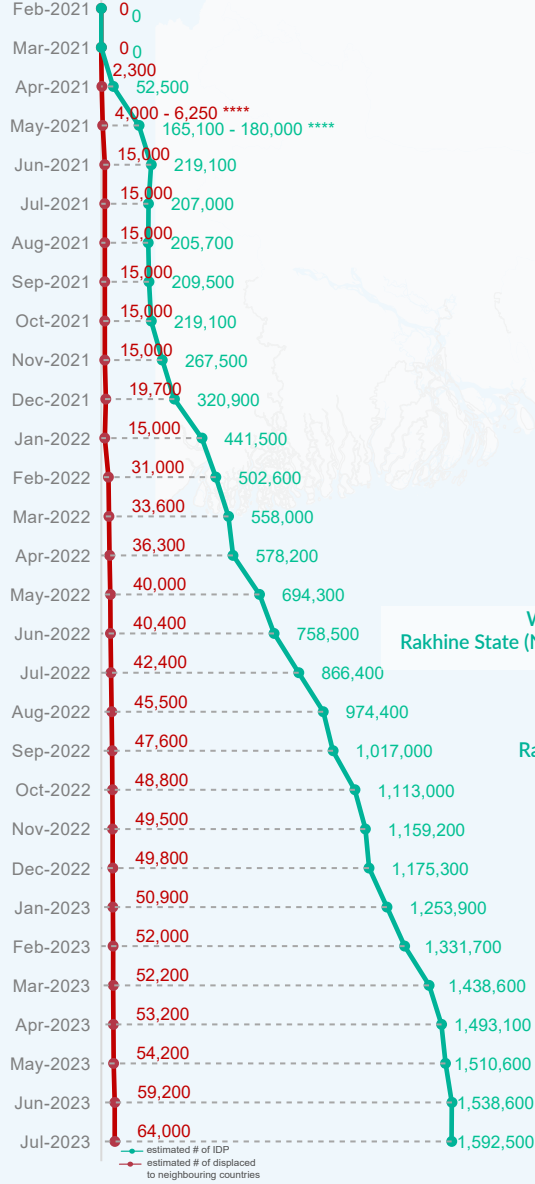
Key figures

Estimated # of IDPs  1,592,500

Estimated # of displaced to neighbouring countries  64,000

Source : UN in Myanmar

Estimated displacement figures by Month





*62,500 persons are displaced by armed conflict in neighbouring Kayah State while 6,900 persons are displaced by inter-EAO conflict between SSPP and RCSS.

**UN Estimates

***Estimates by Tak Border Command Center (TBCC)

****Range of figures was used while data collection was in progress.

 Estimated internal displacement within Myanmar since 1 February 2021 (rounded to the nearest hundred)

 Estimated displacement to neighbouring countries since 1 February 2021, who remain displaced (rounded to the nearest hundred)

-  IDP unplanned settlement (pre-1 Feb 2021)
-  IDP Center (pre-1 Feb 2021)
-  IDP spontaneous location (pre-1 Feb 2021)
-  IDP planned settlement (pre-1 Feb 2021)
-  Temporary shelter for displaced people from Myanmar
-  Refugee, planned settlement
-  States/Provinces with new arrivals
-  UNHCR Regional Bureau
-  UNHCR Multi-country office
-  UNHCR Country Office
-  UNHCR Sub-Office
-  UNHCR Field Office
-  UNHCR Field Unit
-  International boundaries

The boundaries and names shown and the designations used on this map do not imply official endorsement or acceptance by the United Nations

Key figures

1,920,500

Estimated total IDPs within Myanmar

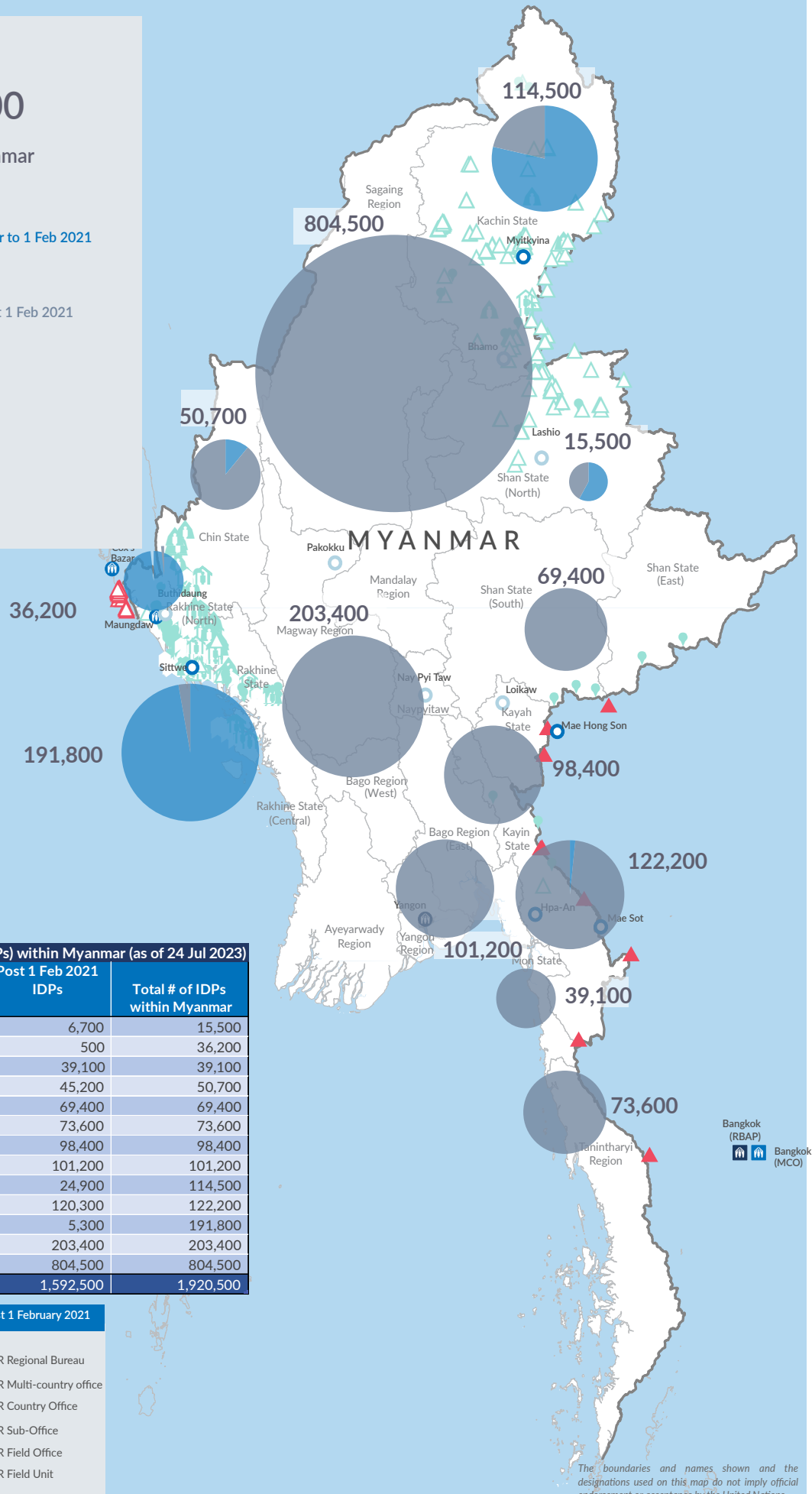
328,000
Estimated # of IDPs displaced prior to 1 Feb 2021
(As of 31 Dec, 2022)

1,592,500
Estimated # of IDPs displaced post 1 Feb 2021
(As of 24 Jul, 2023)

Prior to 1 Feb 2021

Post 1 Feb 2021

Source : UN in Myanmar



Estimated total internally displaced person (IDPs) within Myanmar (as of 24 Jul 2023)

State/Region	Prior to 1 Feb 2021 IDPs	Post 1 Feb 2021 IDPs	Total # of IDPs within Myanmar
Shan State (North)	8,800	6,700	15,500
Rakhine State (North)	35,700	500	36,200
Mon State	-	39,100	39,100
Chin State	5,500	45,200	50,700
Shan State (South)	-	69,400	69,400
Tanintharyi Region	-	73,600	73,600
Kayah State	-	98,400	98,400
Bago Region (East)	-	101,200	101,200
Kachin State	89,600	24,900	114,500
Kayin State	1,900	120,300	122,200
Rakhine State (Central)	186,500	5,300	191,800
Magway Region	-	203,400	203,400
Sagaing Region	-	804,500	804,500
Grand Total	328,000	1,592,500	1,920,500

Estimated internal displacement within Myanmar Pre+Post 1 February 2021 (rounded to the nearest hundred)

- IDP unplanned settlement (pre-1 Feb 2021)
- IDP Center (pre-1 Feb 2021)
- IDP spontaneous location (pre-1 Feb 2021)
- IDP planned settlement (pre-1 Feb 2021)
- Temporary shelter for displaced people from Myanmar
- Refugee, planned settlement
- International boundaries
- UNHCR Regional Bureau
- UNHCR Multi-country office
- UNHCR Country Office
- UNHCR Sub-Office
- UNHCR Field Office
- UNHCR Field Unit

The boundaries and names shown and the designations used on this map do not imply official endorsement or acceptance by the United Nations