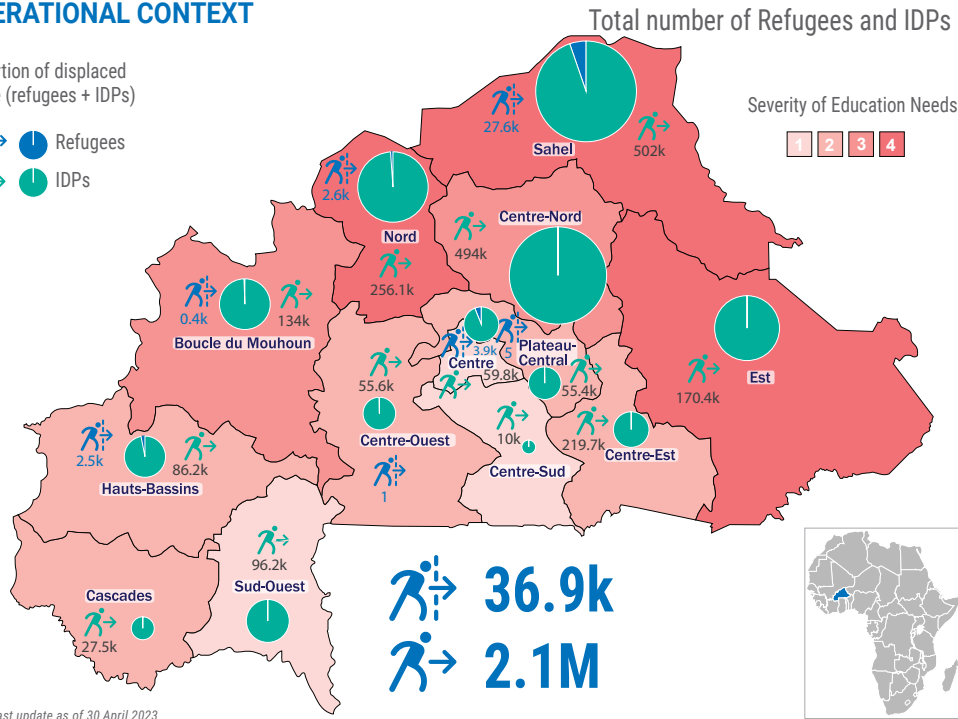
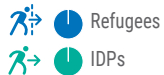


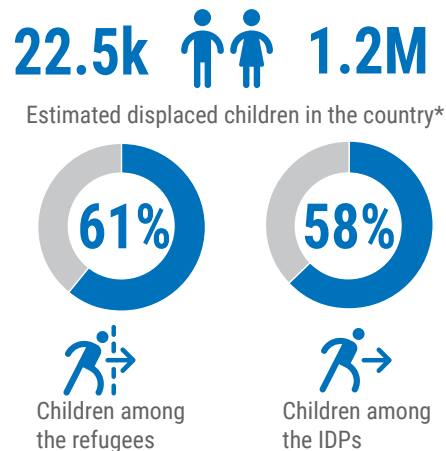
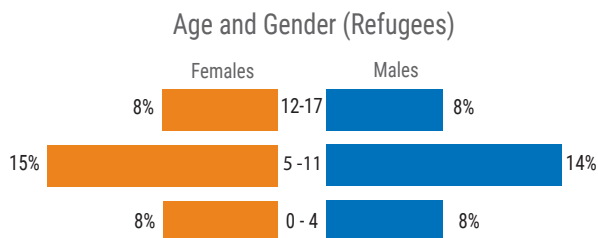
**OPERATIONAL CONTEXT**

Proportion of displaced people (refugees + IDPs)



\* Last update as of 30 April 2023

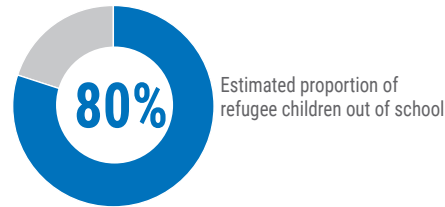
**KEY FIGURES**



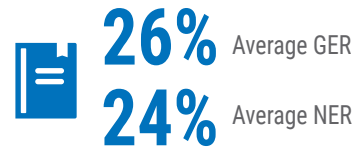
\* Sources: UNHCR Burkina Faso, CONASUR, July 2023.

**REFUGEE EDUCATION OVERVIEW**

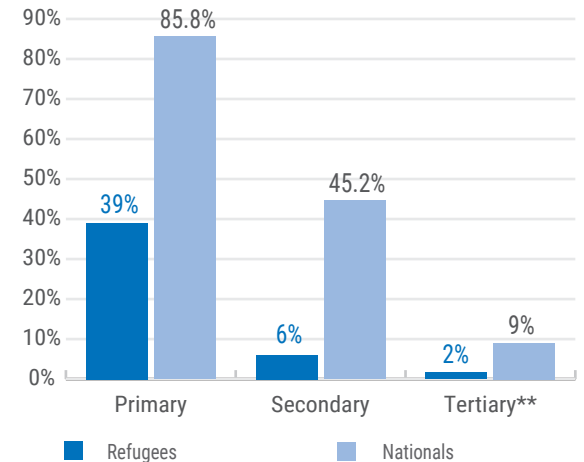
Out of school children



Average GER and NER: Primary + Secondary

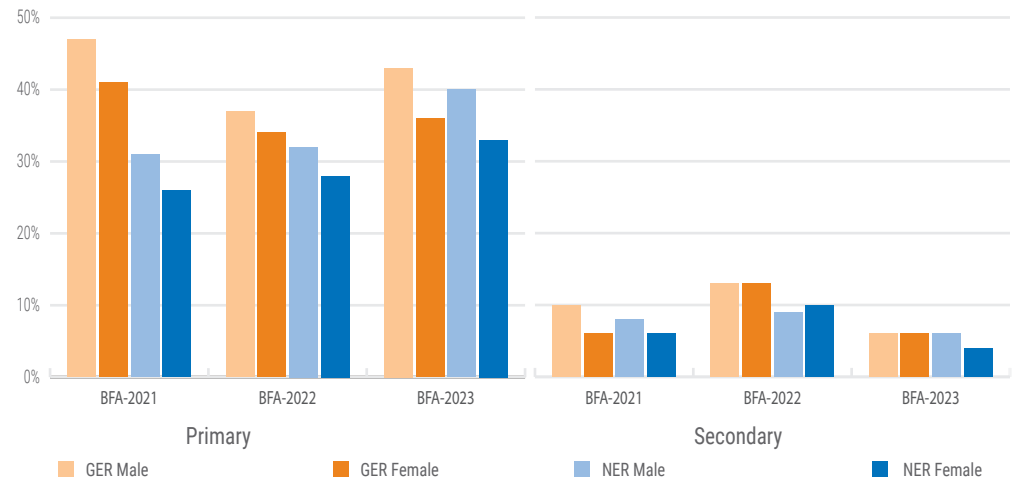


Comparison of refugee enrolment rates by school level for refugees vs nationals\*



\* Source: Ministry of National Education, Literacy, and the Promotion of National Languages, Ministry of Higher Education, 2021/2022 School year. cns.bf  
\*\* The estimated proportion of 18-24 youth enrolled in higher education or technical and vocational education and training (TVET).

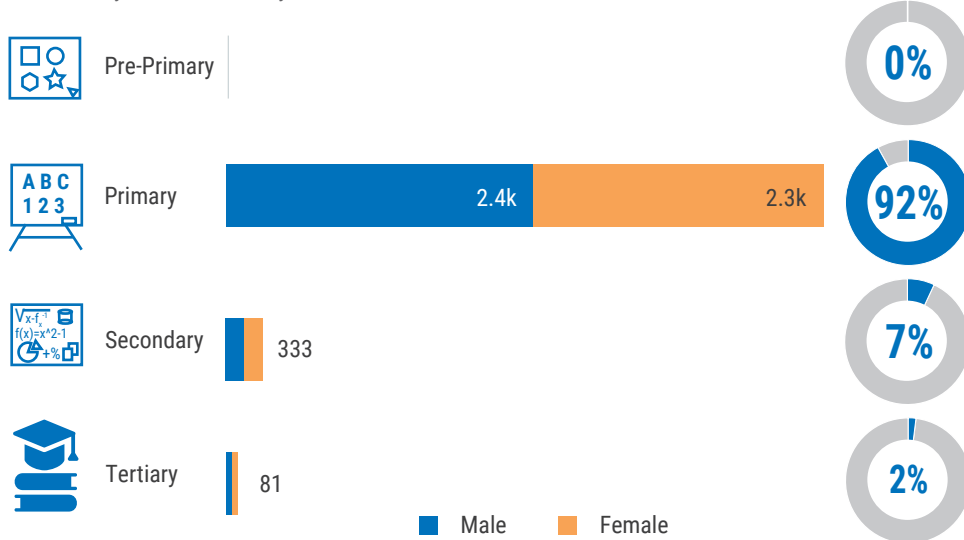
Gross and Net Enrolment Rates (GER and NER) comparison by gender and by school year



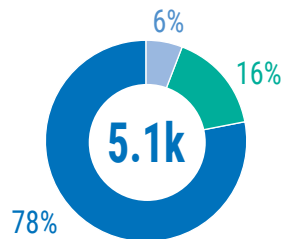
Sources: Displaced population data: UNHCR RBWCA refugee statistics as of July 2023 (end of the academic year); Education data: RBWCA data consolidation as of August 2023, Assistance data: UNHCR and partners data consolidation. Data consolidation is based on data available from the different UNHCR operations. Data may sometimes be partial and do not always consider the whole refugee population. Data reflects the best knowledge of UNHCR and its partners. Disclaimer: The boundaries and names shown, and the designations used on these maps do not imply official endorsement or acceptance by the United Nations.

**UNHCR'S EDUCATION RESPONSE AND ASSISTANCE**

Children/youth reached by level

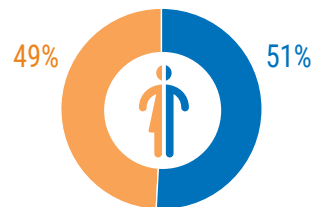


Children/youth reached by protection status



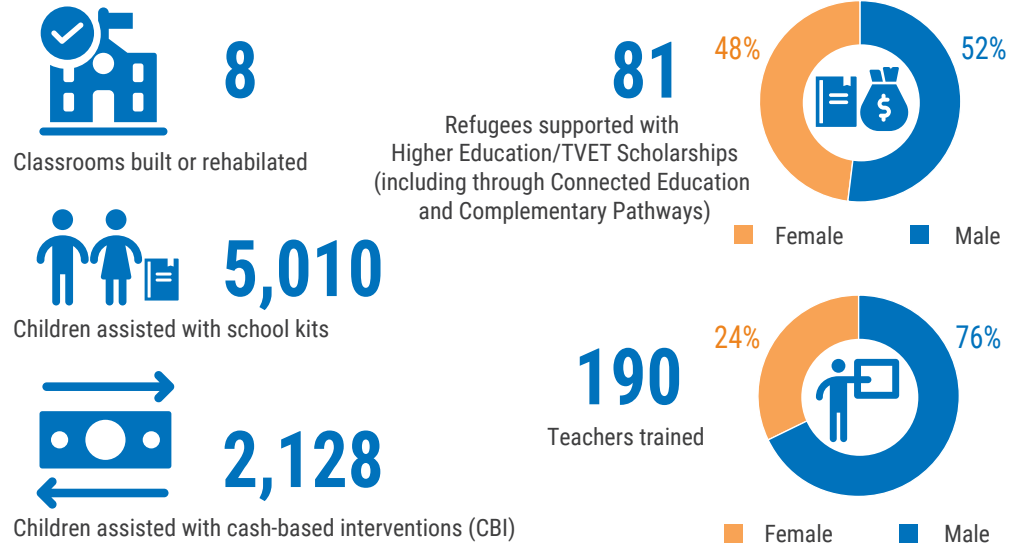
■ Refugees ■ IDPs ■ Host Communities

Children/youth reached by gender



■ Female ■ Male

**KEY ACHIEVEMENTS**



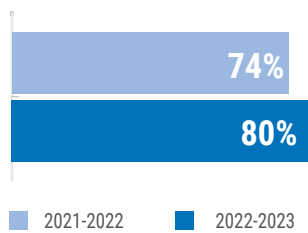
**KEY HIGHLIGHTS**

- There has been a 7-point drop in the post-primary and secondary school enrolment rate for refugees compared with the previous school year, mainly due to the closure of many schools\* in several refugee-hosting regions of the country (including the secondary school near the Goudoubo camp, which closed in 2022), as well as insufficient financial resources to support the inclusion of all refugees in the national education system.
- Increasing the capacity of school infrastructure (classrooms, teachers, teaching materials) in schools hosting refugees would help improve post-primary and secondary school enrolment rates.
- During the 2022-2023 school year, UNHCR supported the construction of two multimedia classrooms (in Dori and Bobo Dioulasso) and the distribution of school kits to 3,900 refugee, IDP and host community children, in order to strengthen access to education at primary, post-primary and secondary levels.
- At tertiary level, scholarships provided by UNHCR have enabled 41 refugees to undertake higher education, including 32 through the DAFI program. In addition, partnerships developed with the Agence Universitaire de la Francophonie (AUF), SIMPLON and the humanitarian training institute BIOFORCE have allowed 20 refugees to access certified vocational training in the digital and humanitarian sectors, while 20 others have pursued university studies through distance learning or university corridors to third countries.

\* 6,149 schools closed in May 2023 compared with 4,258 in May 2022 (Ministry of Education reports as of May 2022 and 2023).

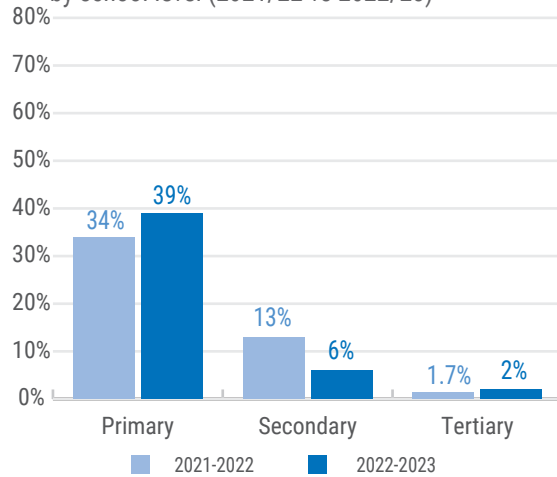
**SCHOOL YEAR COMPARISON 2021/22 vs 2022/23**

Out of school children



Estimated proportion of refugee children out of school by school year

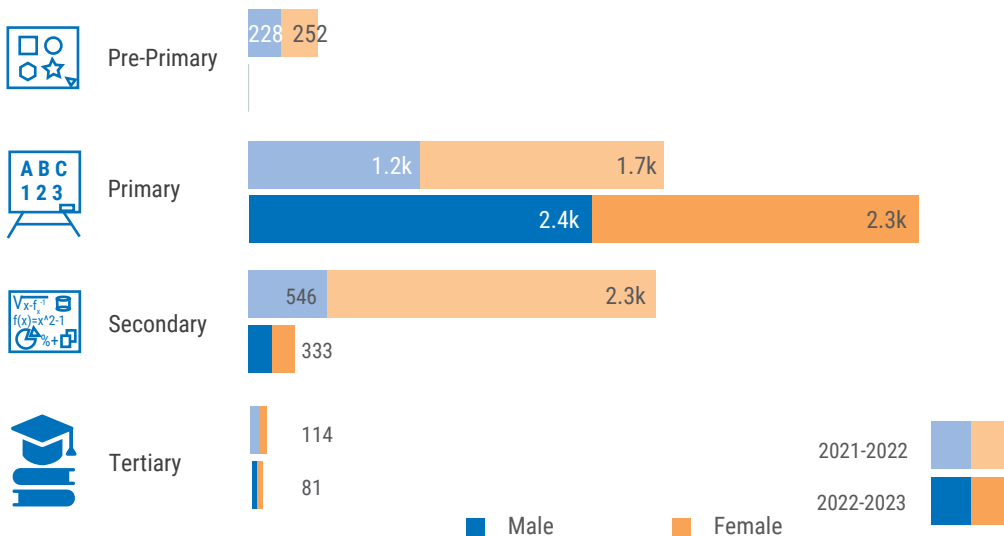
Comparison of refugee enrolment rates in Burkina Faso by school level (2021/22 vs 2022/23)



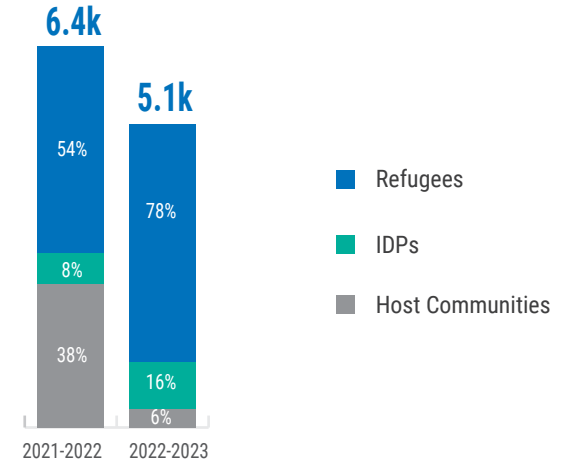
\* The estimated proportion of 18-24 youth enrolled in higher education or technical and vocational education and training (TVET).

**UNHCR'S EDUCATION RESPONSE AND ASSISTANCE 2021/22 vs 2022/23**

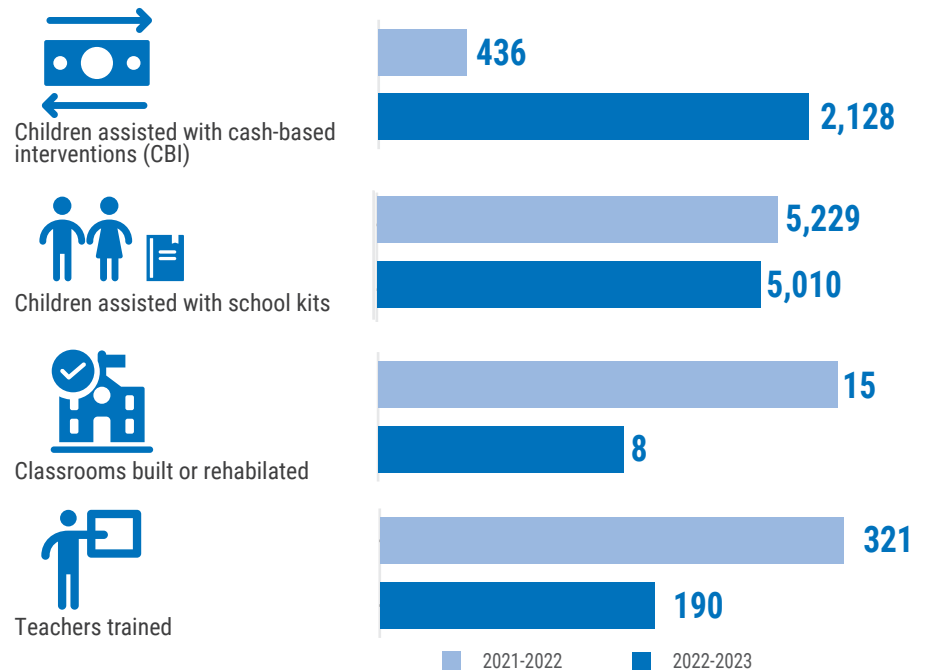
Children/youth reached by level



**CHILDREN/YOUTH REACHED BY STATUS 2021/22 vs 2022/23**

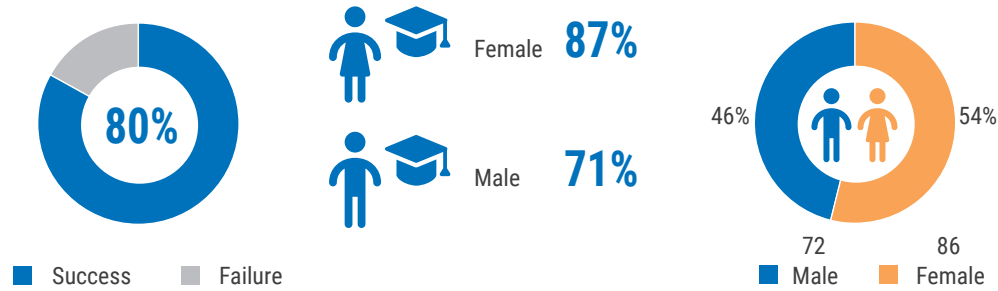


**KEY ACHIEVEMENTS 2021/22 vs 2022/23**

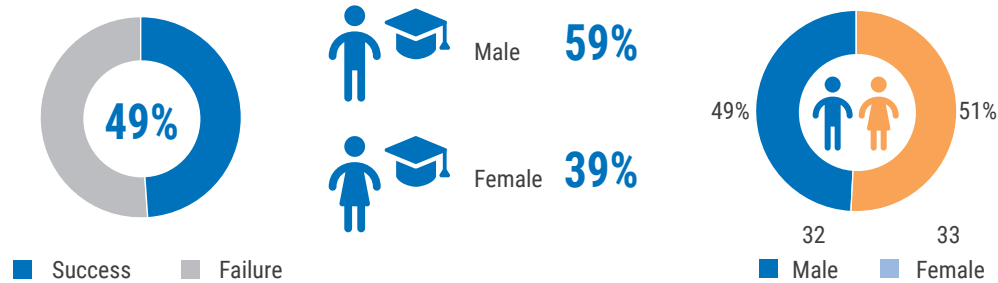


**REFUGEE EXAM SUCCESS RATES BY LEVEL AND GENDER**

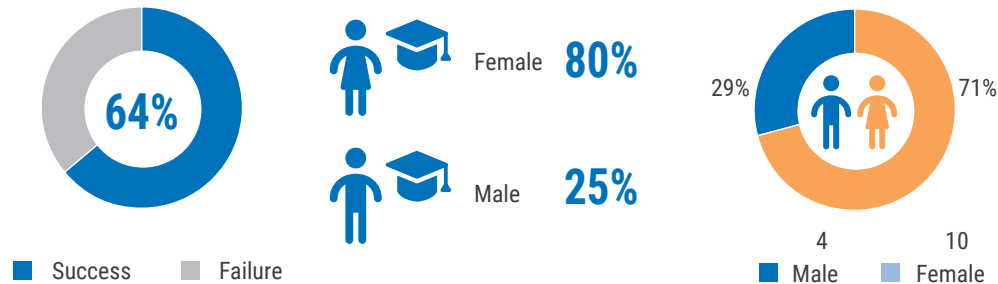
Success rate for Primary



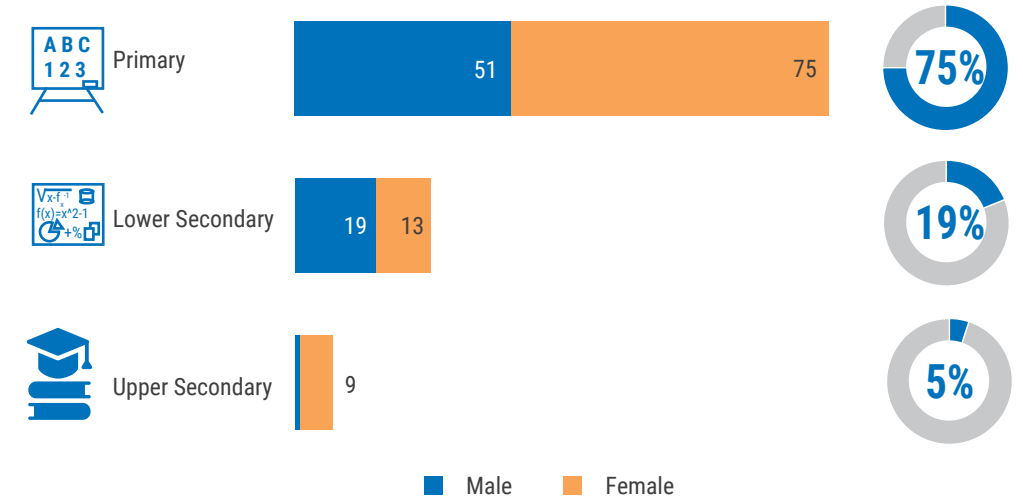
Success rate for Lower Secondary



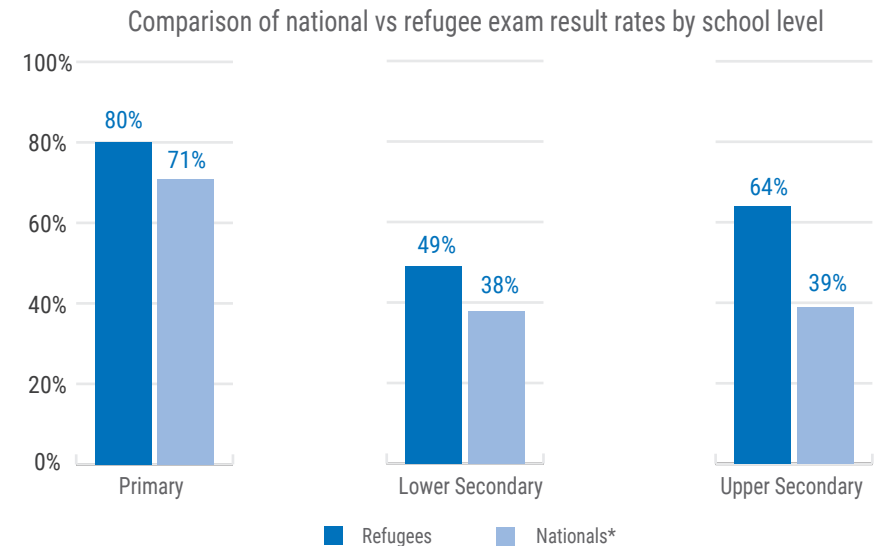
Success rate for Upper Secondary



**DISTRIBUTION OF REFUGEE STUDENTS WHO PASSED THEIR EXAM BY LEVEL**



**SUCCESS RATES (NATIONALS vs REFUGEES)**



Source: UNHCR RBWCA data consolidation as of August 2023.

Sources: Ministry of National Education, Literacy and the Promotion of National Languages; Session June 2023.