

### Total Arrivals from Ethiopia



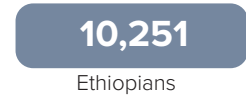
### Introduction:

In support of the Government of Sudan's response to the ongoing influx of refugees from Ethiopia's Tigray region to eastern Sudan, UNHCR, partners, and other UN agencies set up a new refugee settlement in Blue Nile. First group of refugees were relocated to this site on at the end of 2020 and individual biometric registration is ongoing. The dashboard below presents the population profile for Camp 6.

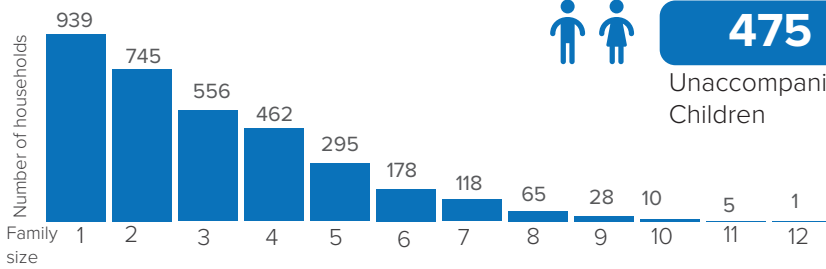
### Persons with Specific Needs



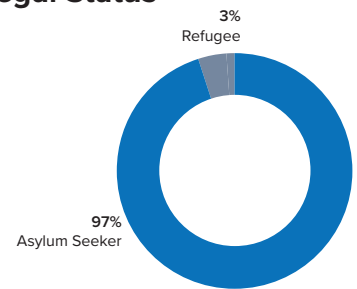
### Country of Origin



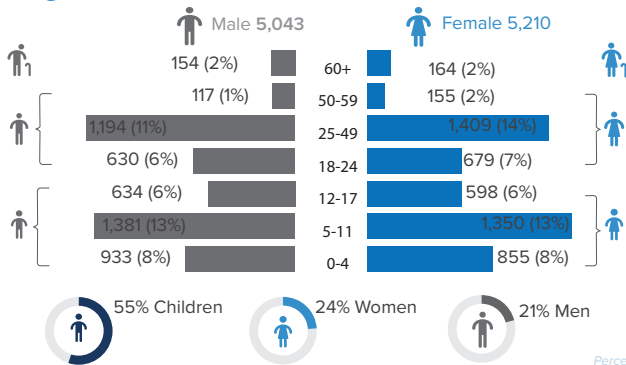
### Family Size



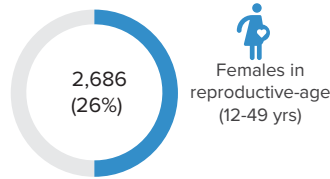
### Legal Status



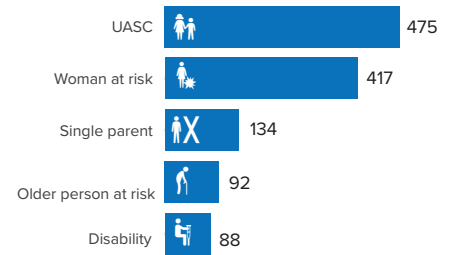
### Age-Gender Breakdown



### Reproductive- Age Women/Girls

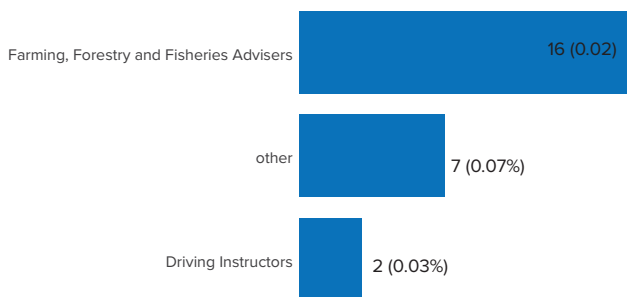


### Specific Needs (top 5)



Source: ProGres v4/Rapp  
\*UASC: Unaccompanied or separated child

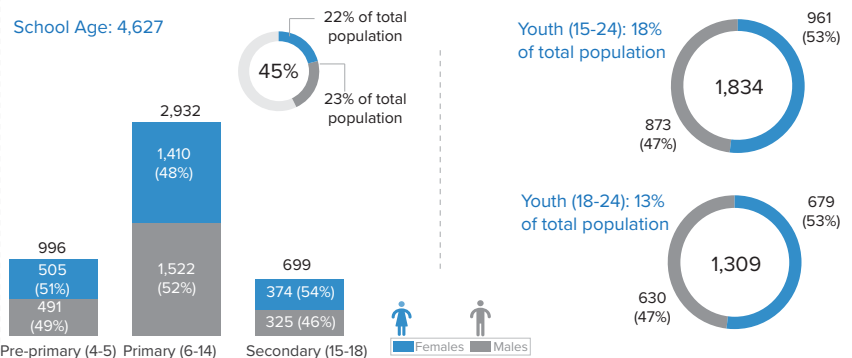
### Occupation (Top 3)



\*Occupation and skills of population aged 18 and above

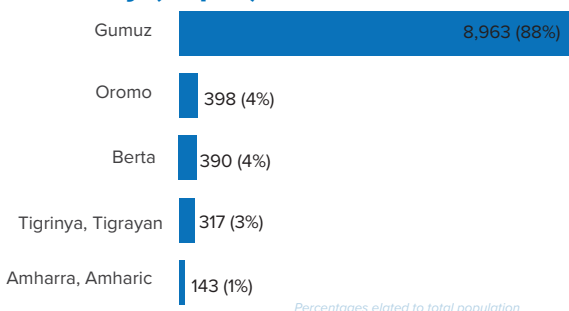
Percentages related to total population

### School Age Children and Youth



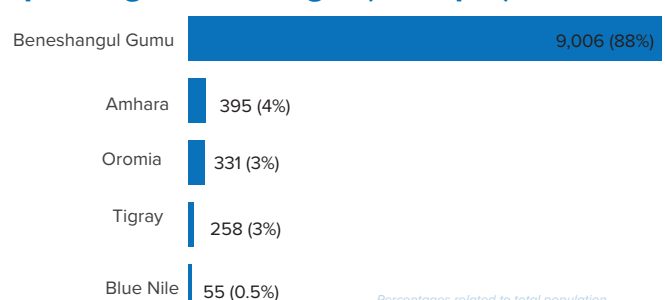
Percentages of females/males related to total of age interval

### Ethnicity (Top 5)



Percentages related to total population

### Top 5 Regions of Origin (Ethiopia)



Percentages related to total population