

2023 UNHCR Global Survey on Livelihoods and Economic Inclusion:

Regional Findings for EHAGL

DRS - Socio-Economic Inclusion Service

Claudia Grigore, LEI Associate

7 December 2023



Agenda

- Introduction to the Survey
- Methodology
- Findings for EHAGL
- Q&A

The Global Survey on Livelihoods and Economic Inclusion

Introduction

Global survey: Description

What?

- Survey collects information on the **economic landscapes** of displaced and stateless persons and delves into the **enabling environments** in UNHCR country operations. Provides with a **solid evidence base to communicate and advocate at country, regional and global levels.**

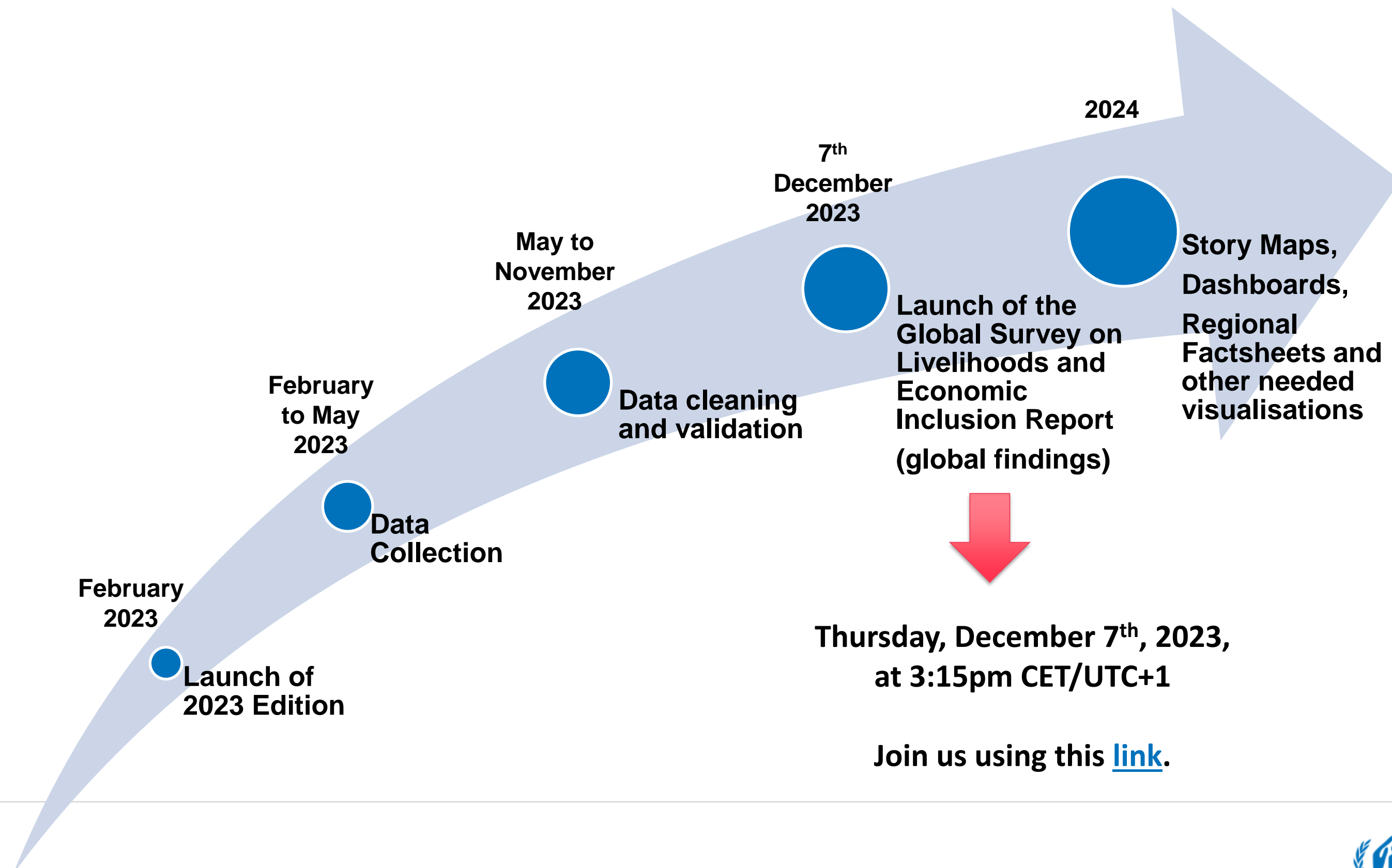
When?

- **Biennial**, launched every two years - previous editions in **2019** and **2021**.

For What?

- **Policy and Practice:** to inform targeted policies and interventions that support policy implementation.
- **Collaboration and Advocacy:** to inform (with other data and evidence) advocacy initiatives that can drive systemic changes and foster partnerships for a more inclusive economic environment.
- The information collected through this survey is used to complement the **Global Compact on Refugees (GCR) Indicator Report** and other **UNHCR reports and analysis.**

Global survey: 2023-2024 Timeline



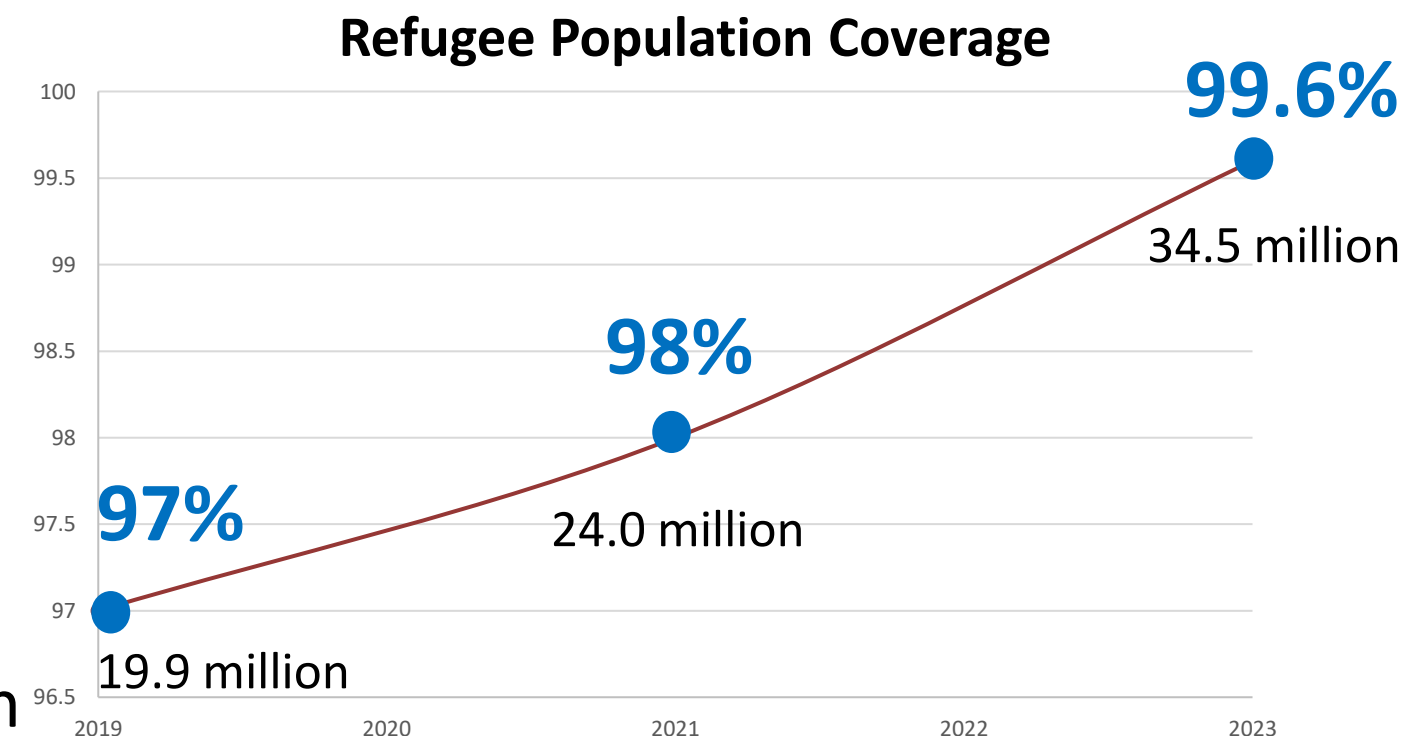
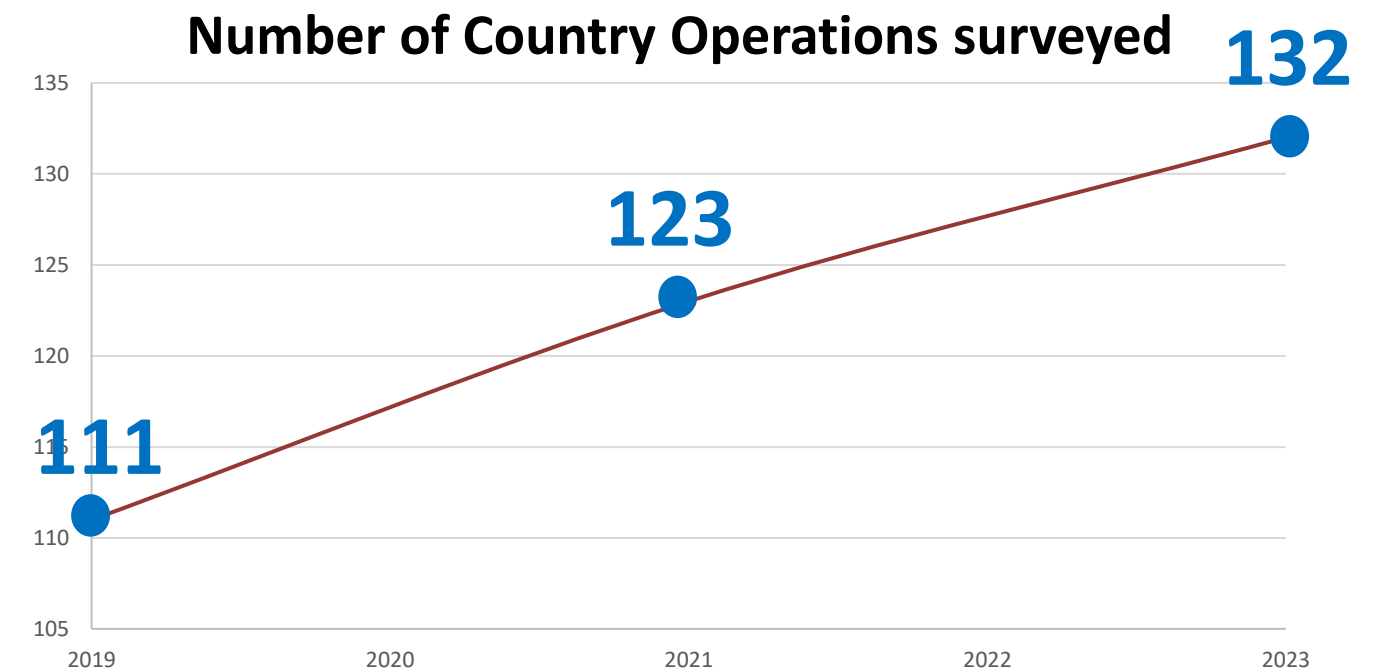
Global survey: Outreach 2023-2019

132 COUNTRIES surveyed in **2023**, hosting
99.6% of the global refugee population
34.5 million refugees*

123 COUNTRIES surveyed in **2021**, hosting
98% of the global refugee population
24.0 million refugees

111 COUNTRIES surveyed in **2019**, hosting
97% of the global refugee population
19.9 million refugees

* Includes refugees, people in refugee-like situations and other people in need of international protection.



Global Survey Report: Content

Chapter 1: Global Findings for Refugees (in-depth analysis and trends)

A. Economic Inclusion

- Employment
- Entrepreneurship and Self-employment
- Technical and Vocational Education and Training (TVET)
- Land for Agriculture
- Climate Adaptation
- Inclusion in Digital Economy

B. Financial Inclusion

C. Social Assistance and Social Insurance

**Full Report is
available [here](#).**

Chapter 2: Global Findings for Other Population types (snapshots)

- Asylum seekers
- Internally Displaced Persons
- Returnees
- Stateless Persons

The Global Survey on Livelihoods and Economic Inclusion

Methodology

Global survey: Data collection

How?

- Data was collected through **Key Informant Interviews** and is primarily **qualitative**.
- **Profiles of Key Informants:** primarily Livelihoods and Economic Inclusion officers in Country Operations and Multi-Country Offices. In the absence of a Livelihoods and Economic Inclusion Officer in the Operation, Protection or Programme officers acting as focal points.
 - Data was informed by key informants in consultation with relevant colleagues and supervisors in their offices.
- The key informants were asked to assess the level of legal rights and access for the forcibly displaced and stateless populations of the country on a 3-level scale:
 - Yes, without any significant restrictions
 - Yes, with restrictions
 - No

Global survey: Analysis

How?

- Most figures for refugees are measured as a "**percentage of refugees living in countries with legal rights or access in practice to XYZ**".
 - These percentages are calculated by applying weights reflecting the refugee population of each country.
 - Population figures for refugees are available for all 132 countries surveyed (Source: UNHCR 2023 Global Trends survey).
- Other figures are measured in terms of "**percentage of surveyed countries providing unrestricted legal rights or access in practice to XYZ**".
 - These percentages are computed using the number of countries and do not include population weights.
- All those figures are to be interpreted as **estimates**.

The Global Survey on Livelihoods and Economic Inclusion

Findings for EHAGL

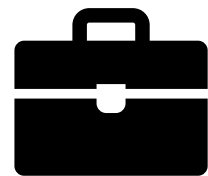
Global Survey - EHAGL: Outreach



11 COUNTRIES surveyed in 2023 in the region, estimated to host a total of **4.7** million refugees*

* Includes refugees, people in refugee-like situations and other people in need of international protection.

Formal Employment

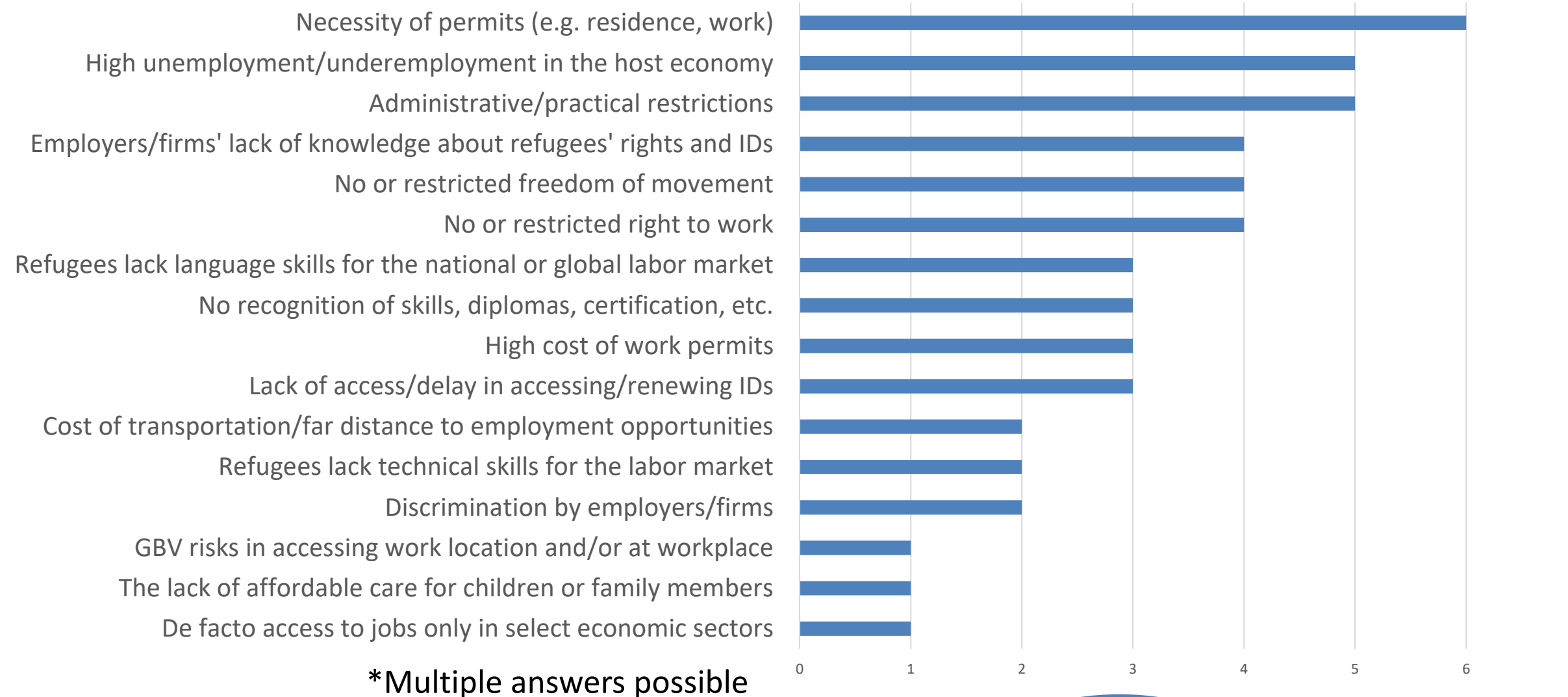


34% of refugees live in countries with unrestricted access in practice to formal employment

in 2023

GLOBAL figure: 45%

Reported Restrictions to Formal Employment in EHAGL in 2023*



Top barriers at Global level:

1. Administrative/practical restrictions
2. No recognition of skills, diplomas or certifications
3. Employer's lack of knowledge of refugees' rights and IDs
4. Necessity of permits



66% of refugees live in countries requiring a **WORK PERMIT** to have access to work

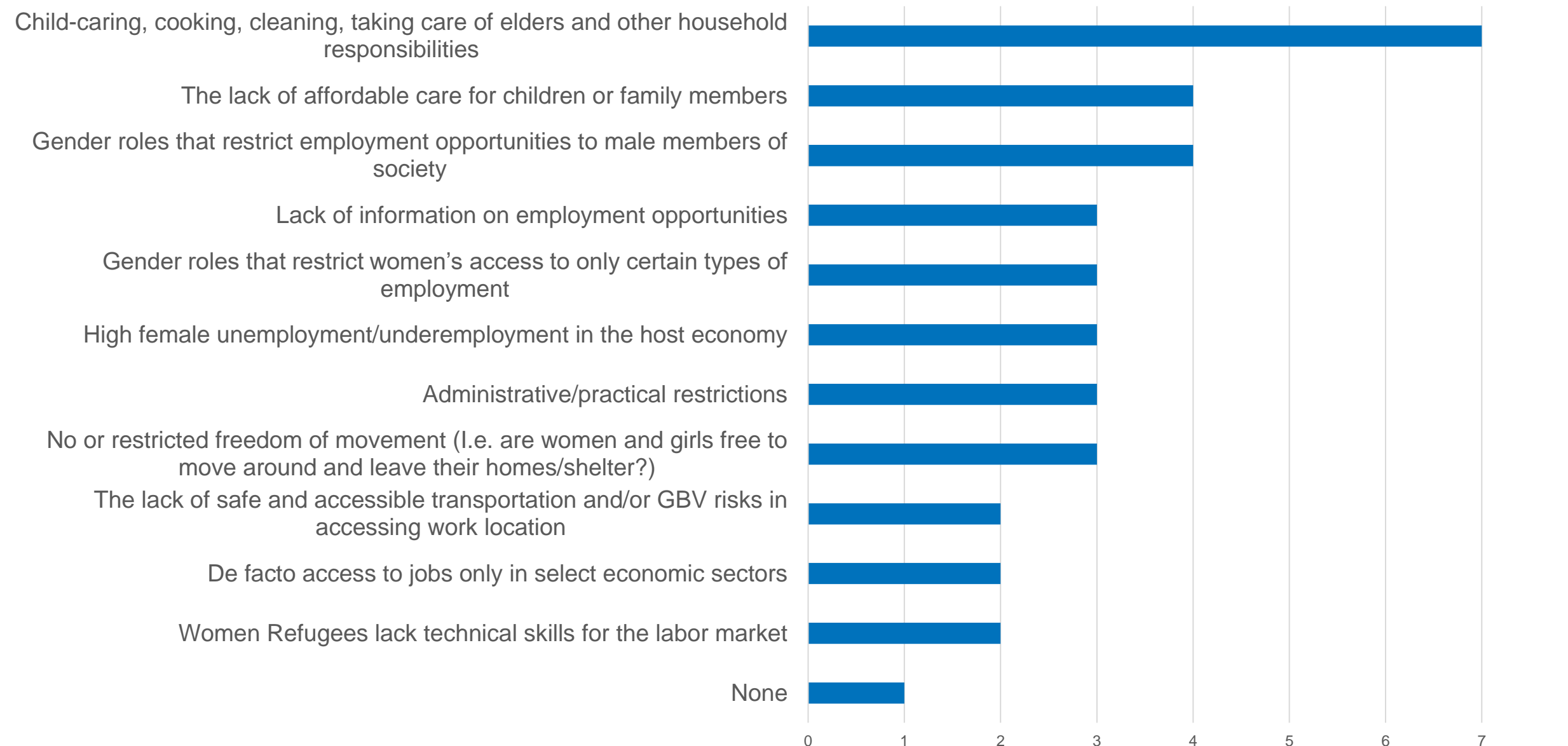
in 2023

GLOBAL figure: 61%

Source: Global LEI Survey 2023

Gender: Barriers to Access to Formal Employment

Top restrictions faced by women and older adolescents when accessing formal employment opportunities in EHAGL in 2023*



*Multiple answers possible

Top barriers at Global level:

1. **Child-caring, cooking, cleaning, taking care of elders and other household responsibilities.**
2. **The lack of affordable care for children or family members.**
3. Gender roles that restrict women's access to only certain types of employment.
4. Lack of information on employment opportunities.

Only **6/132 (5%)** country operations have reported **no additional restrictions for women and older adolescents.**

Entrepreneurship and Self-Employment

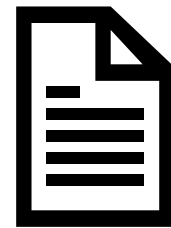


46%

refugees live in countries with **unrestricted right** to own or lease property for business purposes

in 2023

GLOBAL figure:
63%



45%*

refugees live in countries with **unrestricted right** to registering and operating a business

in 2023

GLOBAL figure:
56%

* access is also estimated at 45% (similar to GLOBAL figure)

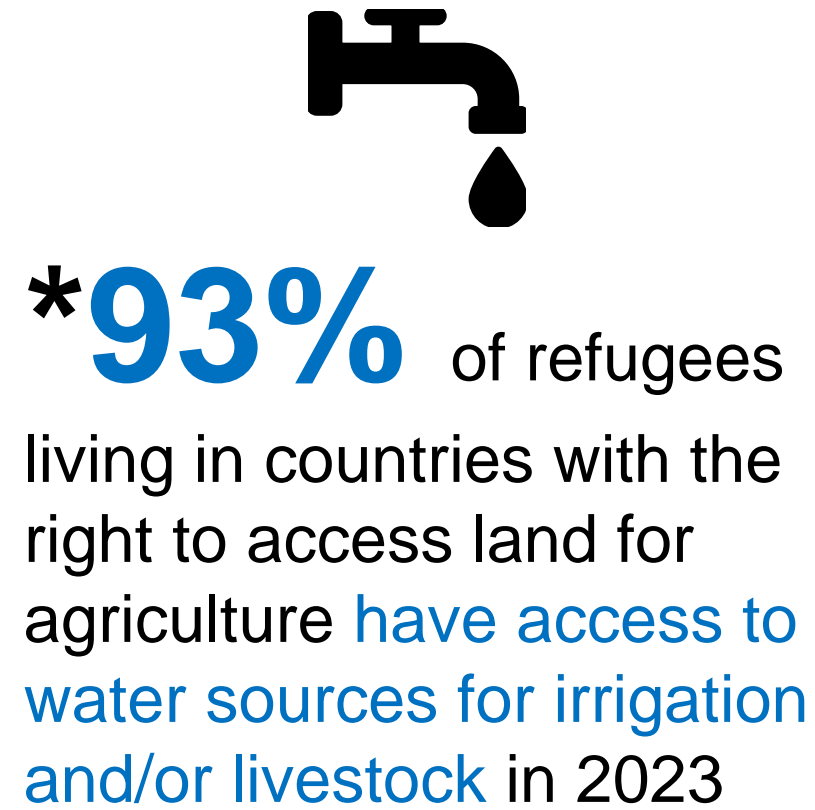
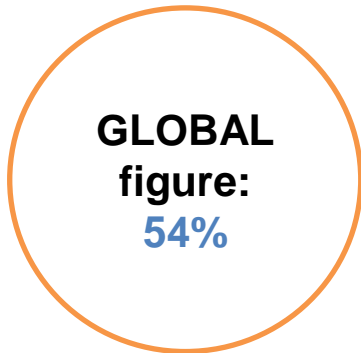
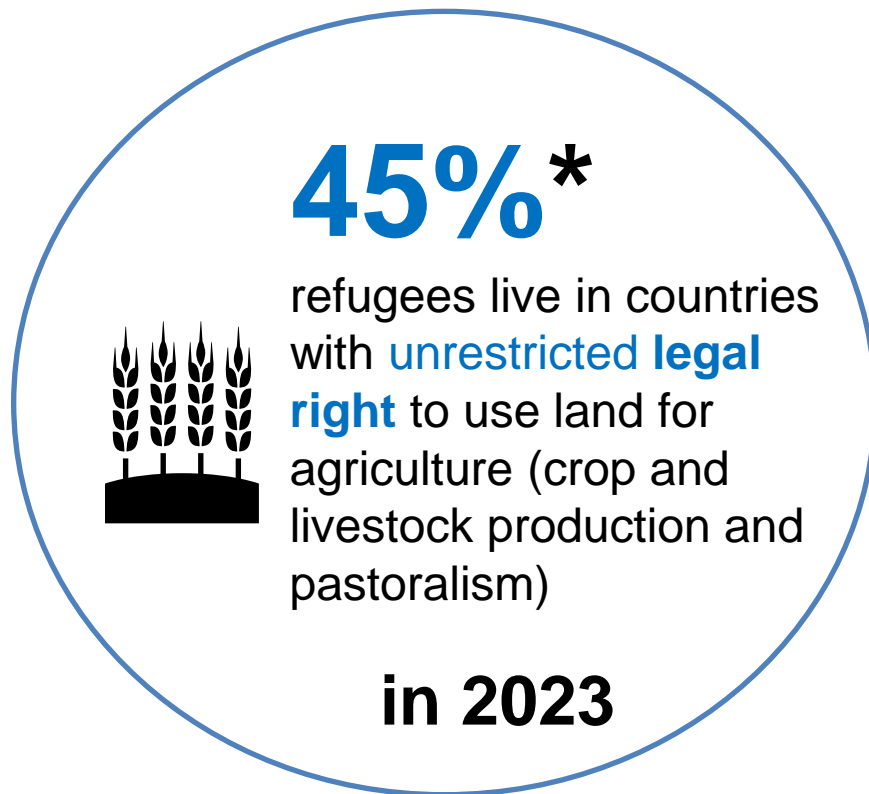
68%

refugees live in countries with **unrestricted access to entrepreneurship support** in 2023*

* through access to business development services, grants, counselling incubators, accelerators and training centers

GLOBAL figure:
37%

Land for Agriculture



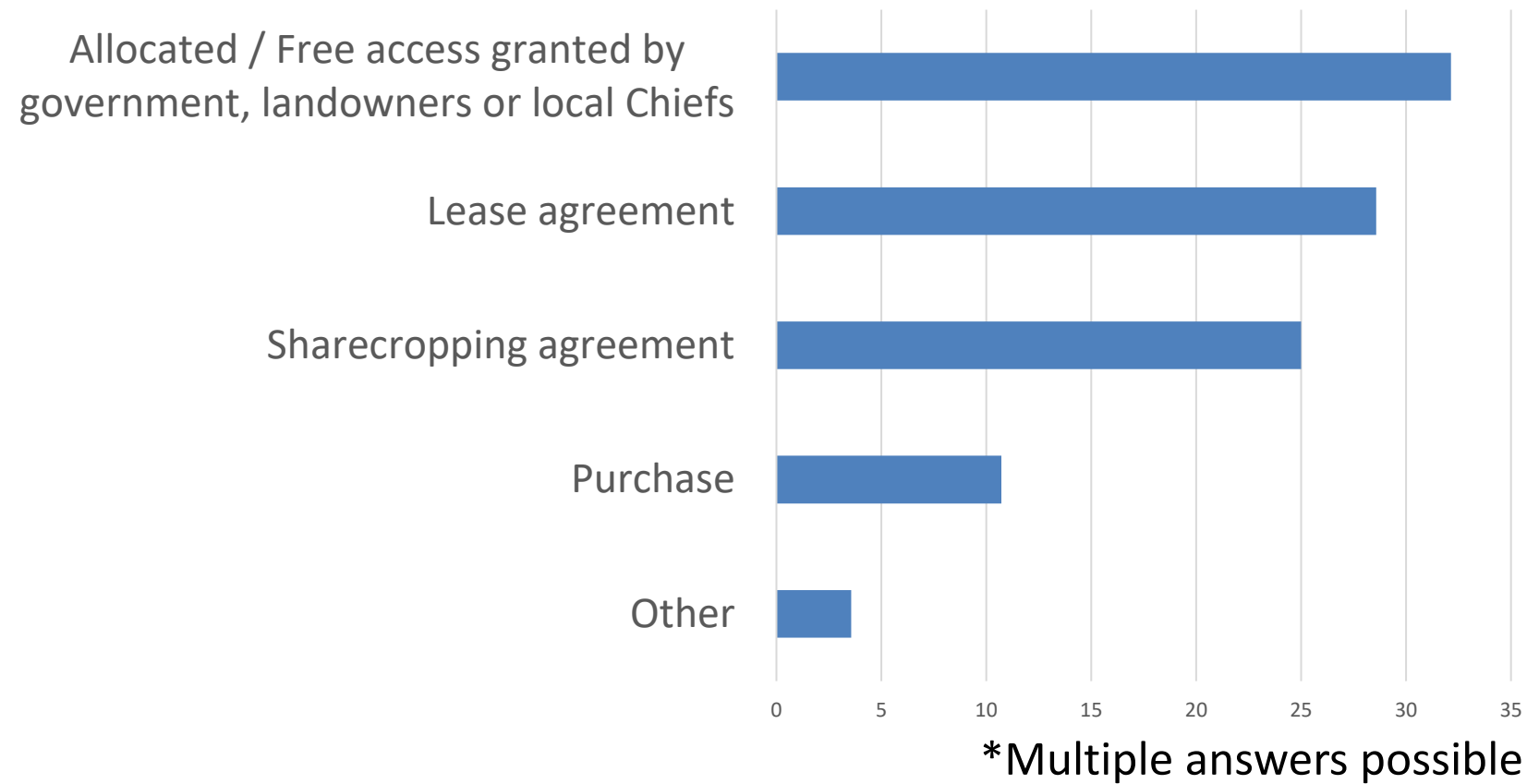
Main land tenure system in place	EHAGL - Percentage of countries reporting system
Private	40%
Communal	30%
State	20%
Other	10%

Main land tenure system in place	GLOBAL - Percentage of countries reporting system
Private	68%
State	10%
Communal	6%
Open access	6%

Source: Global LEI Survey 2023

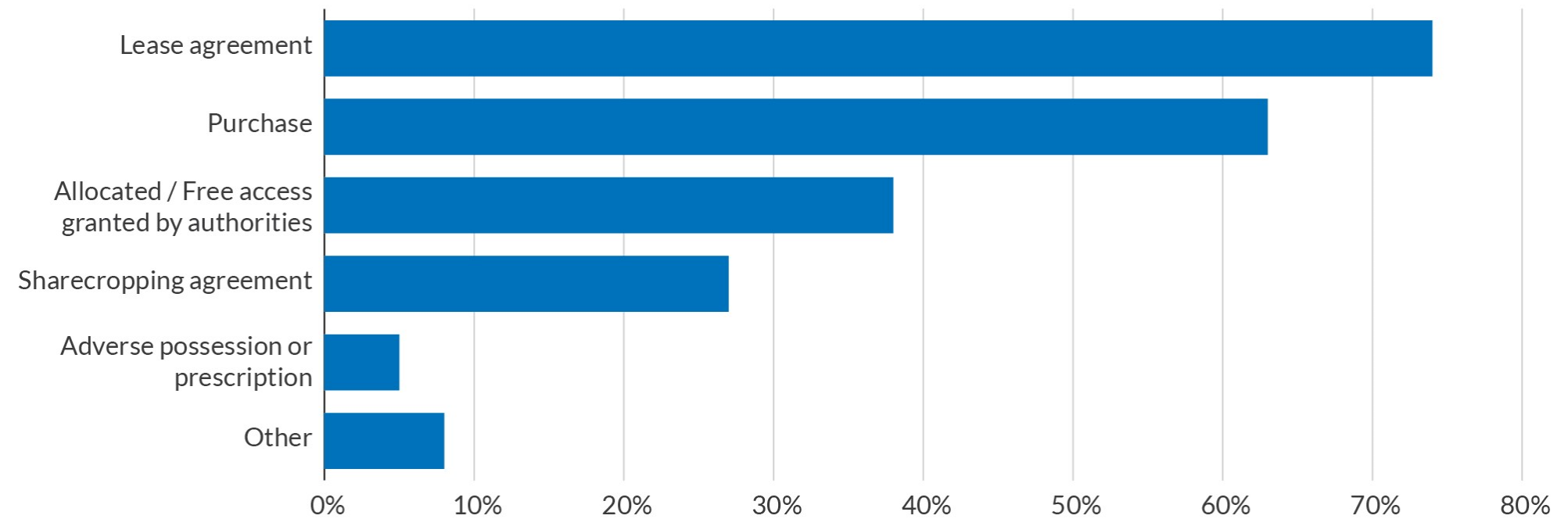
Modalities to secure access to land for agriculture

EHAGL - Percentage of countries reporting means of securing access to land for agriculture, per type



GLOBAL:

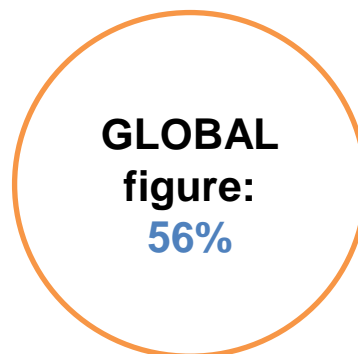
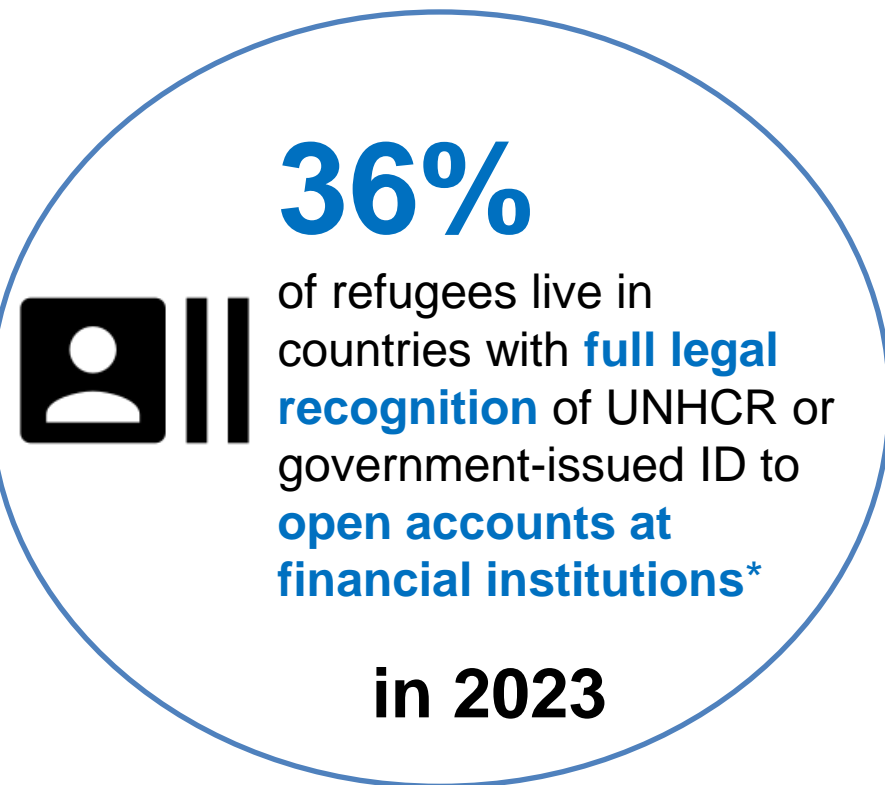
Percentage of countries reporting means of securing access to land for agriculture, per type



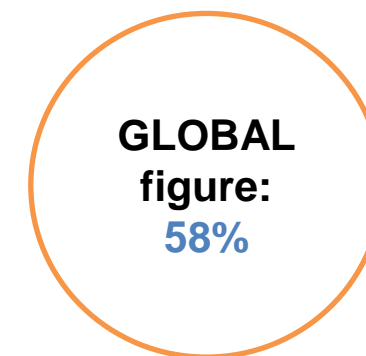
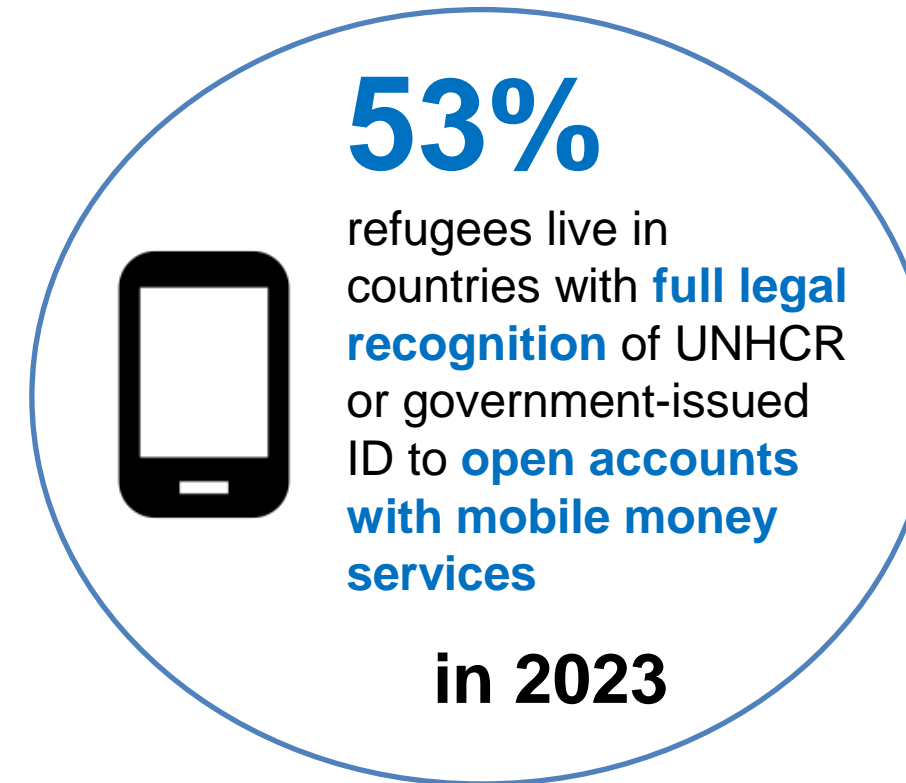
Note: multiple answers possible

*Multiple answers possible

Financial Inclusion

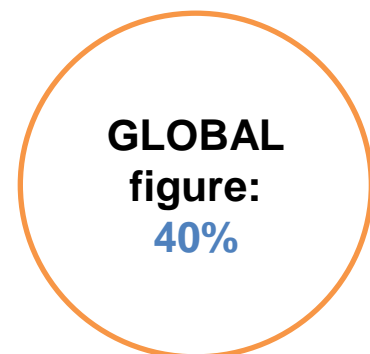
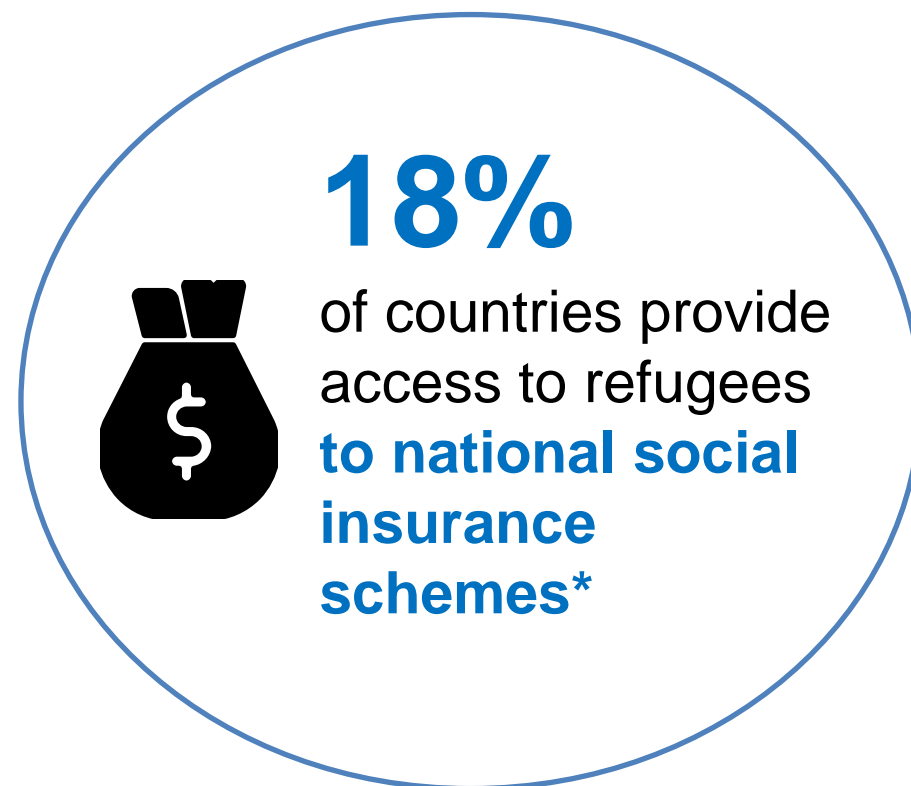


**may it be a bank or non-financial institution*

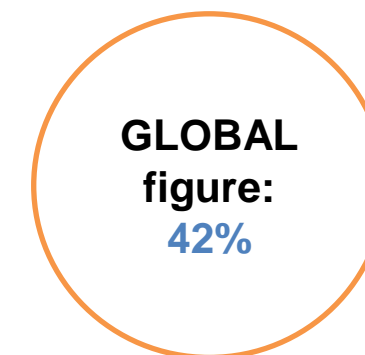
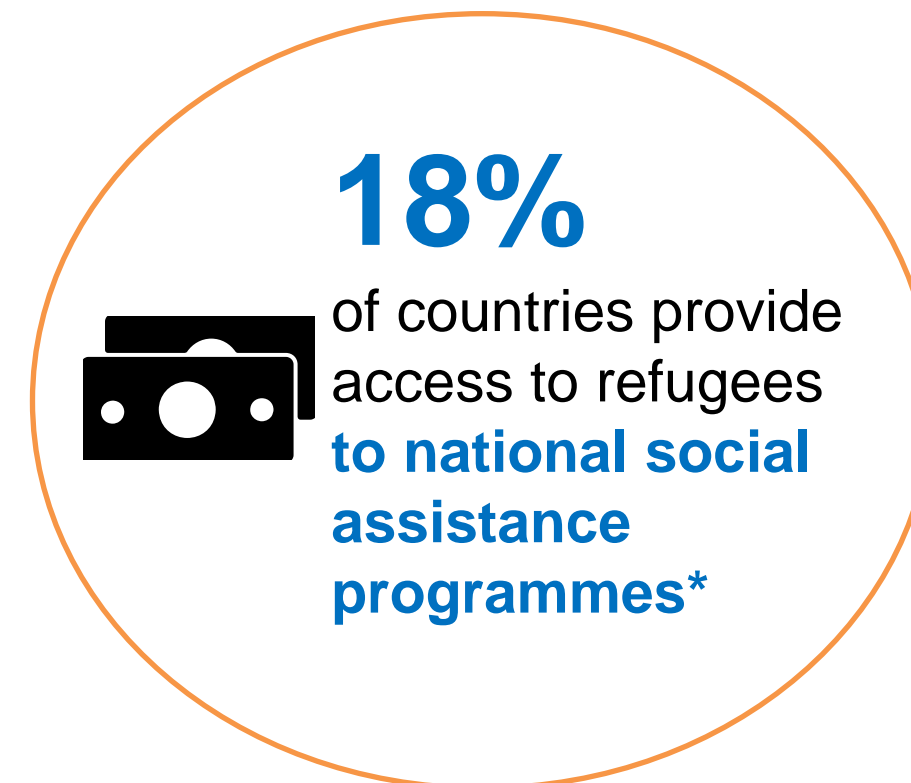


Source: Global LEI Survey 2023

Social Protection



*e.g. health insurance, unemployment support, disability benefits, old-age pensions, crop/livestock insurance



*including safety net programmes funded by international organizations.

Source: Global LEI Survey 2023

Q&A

Thank you!