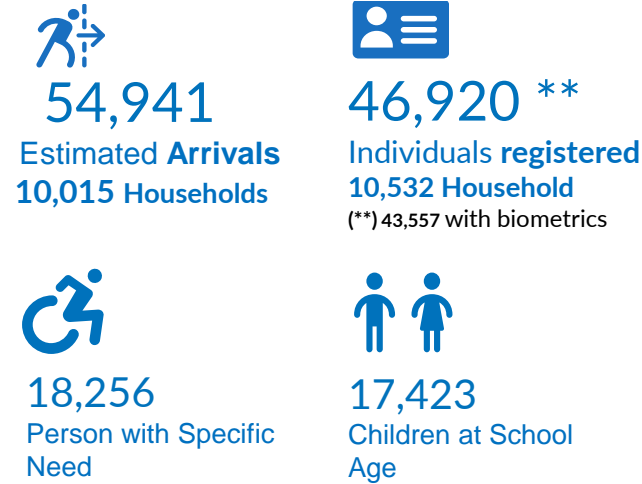
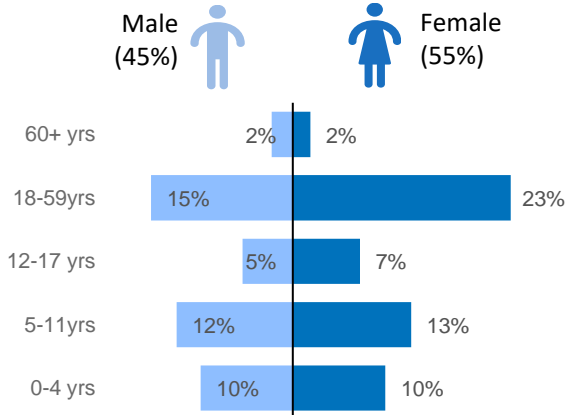


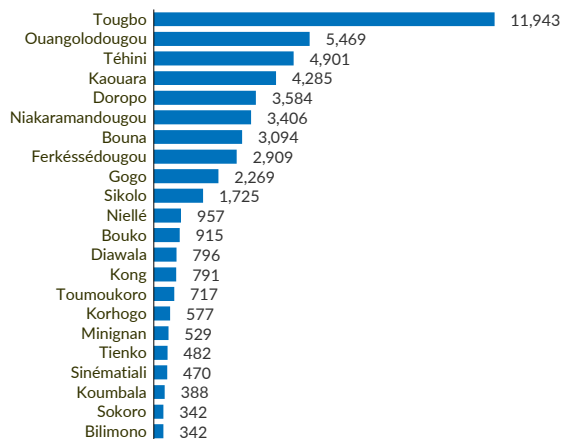
Key Figures



Age and Gender Breakdown*

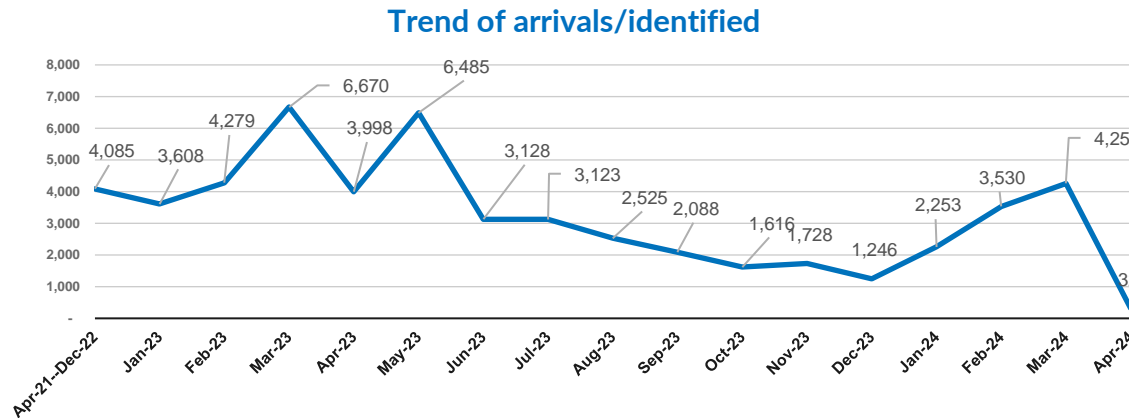


Sub-prefectures hosting asylum seekers*

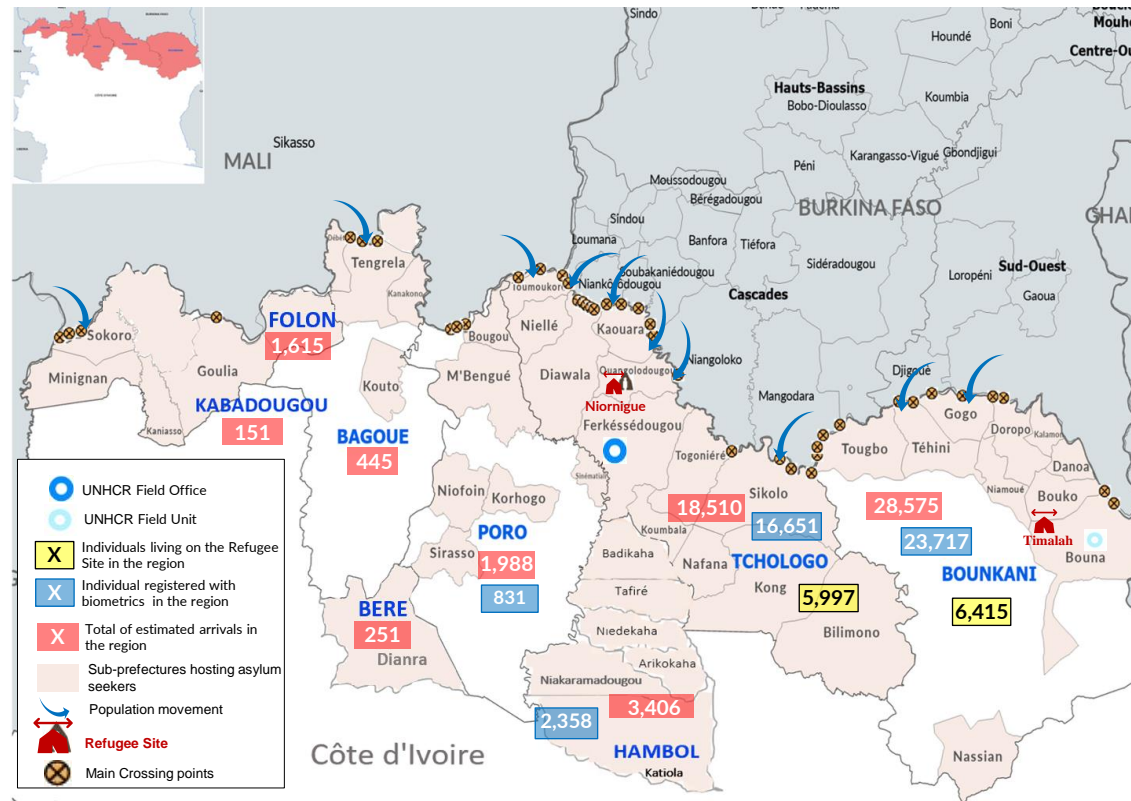


(* sub-prefecture having received at least 100 asylum seekers)

New arrivals from Burkina Faso and Mali are currently registered as asylum seekers. The main reasons for the departure of asylum seekers from their villages in Burkina Faso are **armed conflicts / generalized insecurity, threats, intimidation and attacks by non-state armed groups in the villages.**



Situation Map

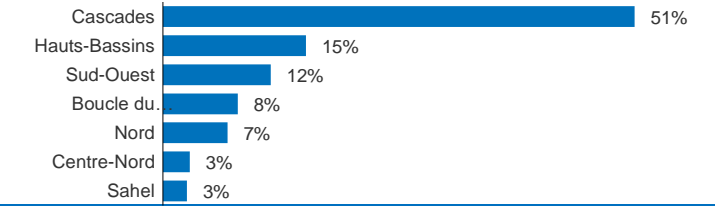


(* The data is exclusively that of biometrically registered persons. The boundaries and names shown and the designations used on this map do not imply official endorsement or acceptance by the United Nations.

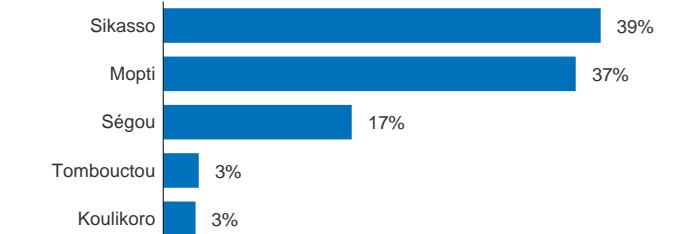
Country of Origin of registered asylum seekers



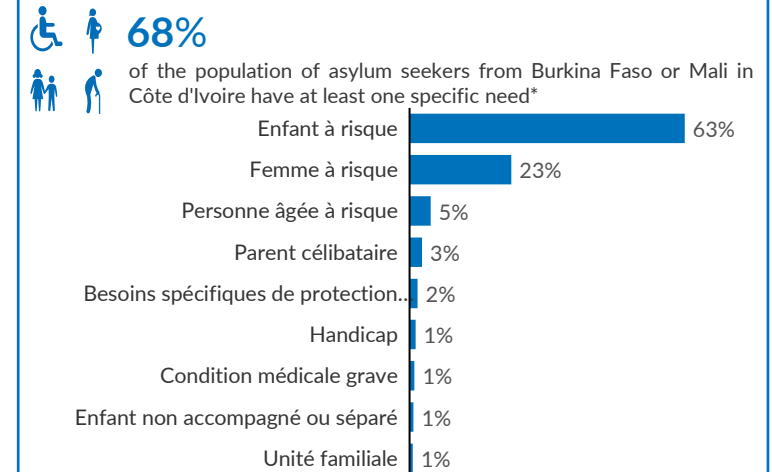
Principal regions of origin in Burkina Faso*



Principal regions of origin in Mali*



Distribution of specific needs*



Children and women in reproductive age*

