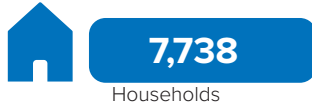


Total Arrivals from Ethiopia

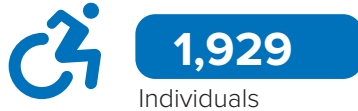


Introduction:

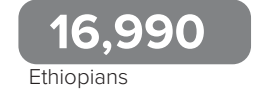
Um Rakuba camp was opened on 12 November 2020 to accommodate refugees fleeing Ethiopia due to armed conflict in November 2020. Since the outbreak of conflict in Sudan in April 2023, the camp has received refugees and asylum seekers secondarily displaced from Khartoum, Al Jazirah and other parts of the country in addition to the Ethiopian refugee caseload. These include those who spontaneously arrived in the camp after fleeing conflict-affected areas and those who relocated with the support of UNHCR, the Commission for Refugees and other partners.

As of end of March 2024, the camp accommodates 17,006 refugees (including secondarily displaced refugees), all of whom are biometrically registered and provided with assistance. The dashboard below presents the population profile for Um Rakuba camp:

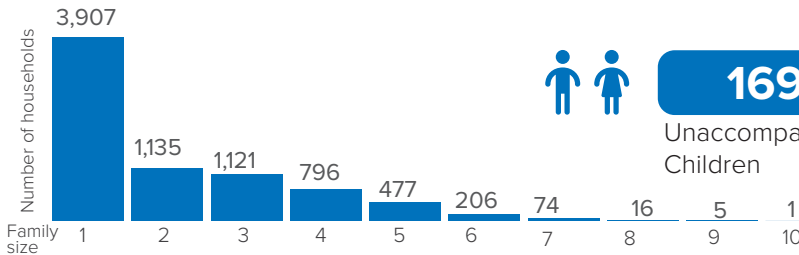
Persons with Specific Needs



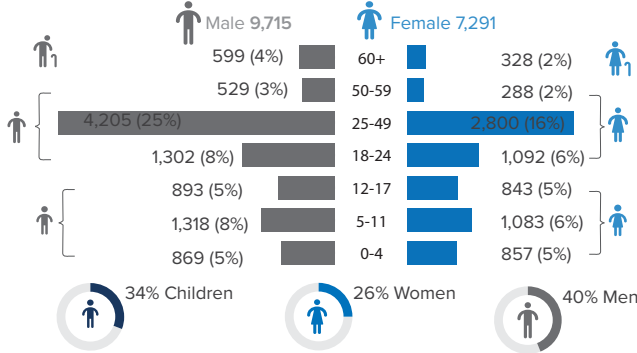
Country of Origin



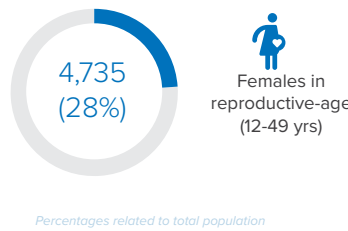
Family Size



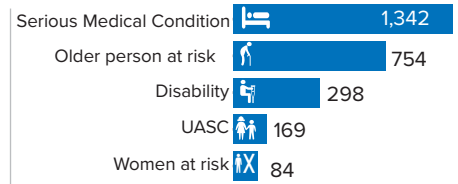
Age-Gender Breakdown



Reproductive-Age Women/Girls

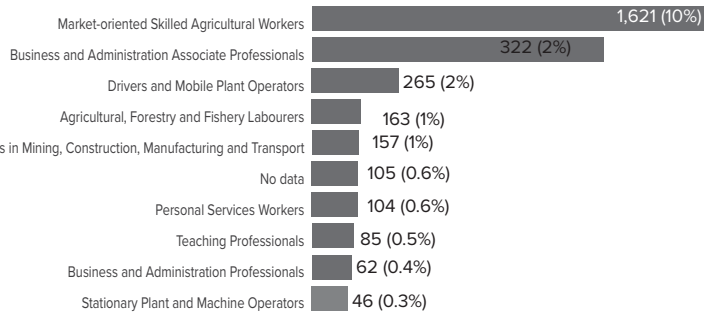


Specific Needs (Top 5)



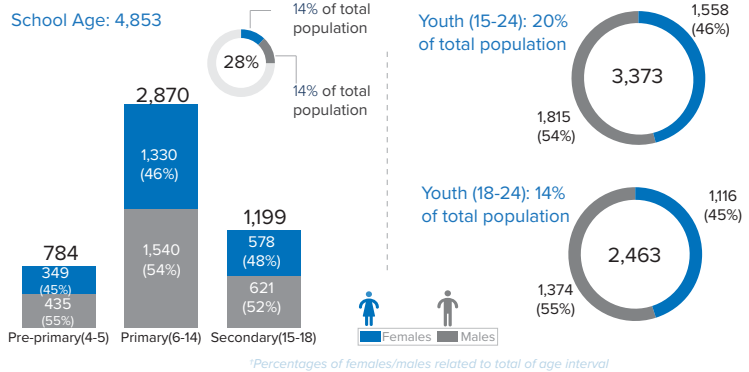
**UASC: Unaccompanied or separated child
Source: ProGres v4/Rapp*

Occupation (Top 10)

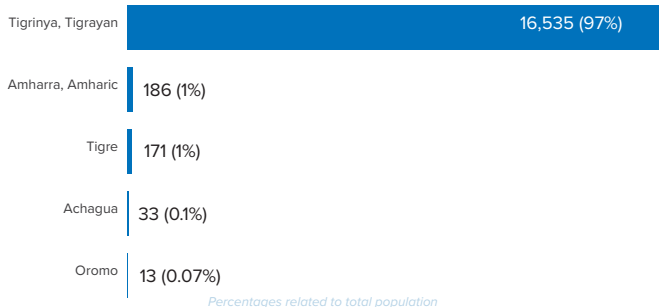


**Occupation and skills of population aged 18 and above*

School Age Children and Youth



Ethnicity (Top 5)



Top 5 Areas of Origin (Ethiopia Admin 3)

