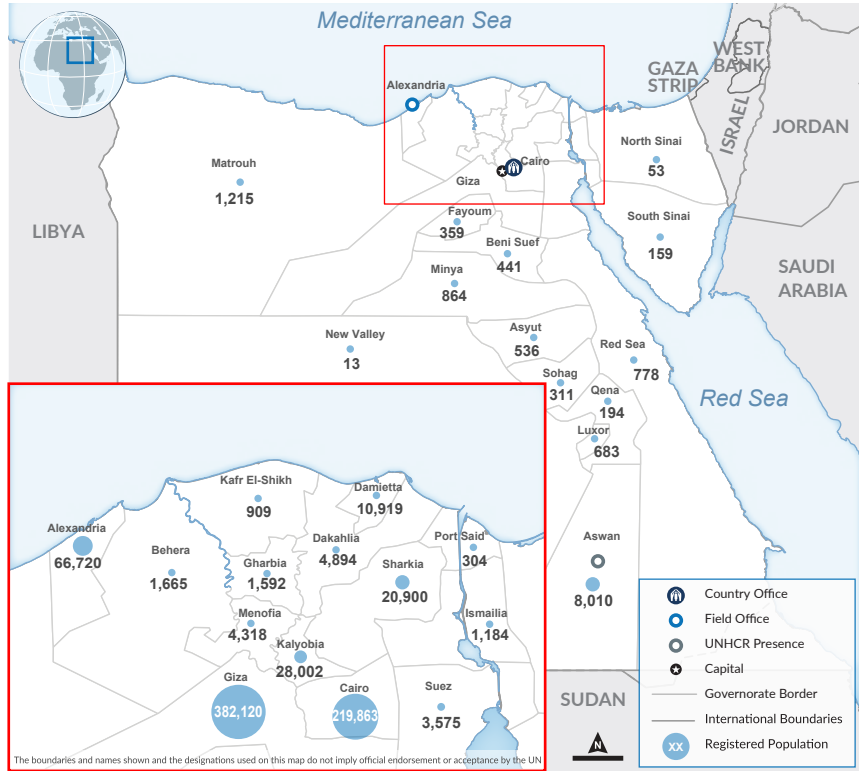
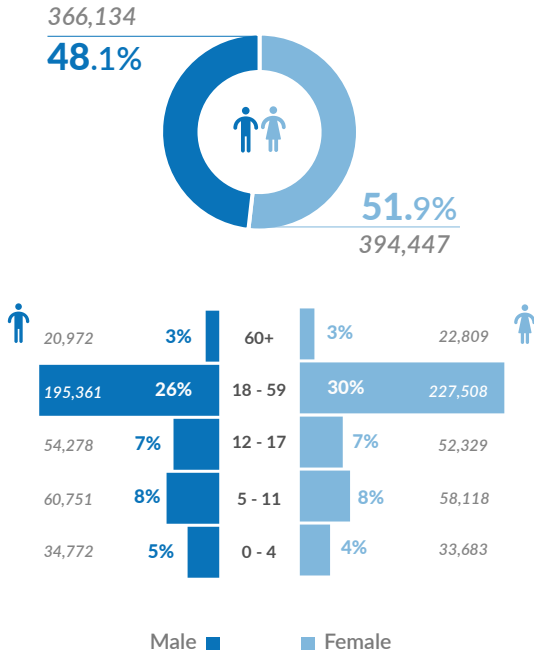
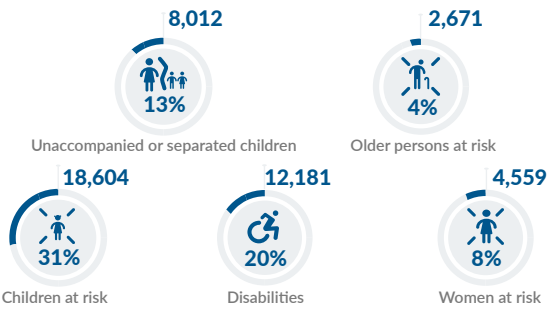




Age & gender of registered population



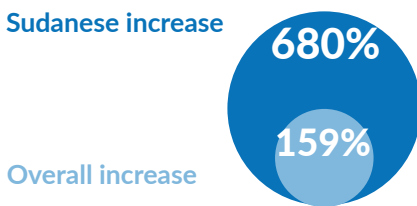
Persons with specific needs*



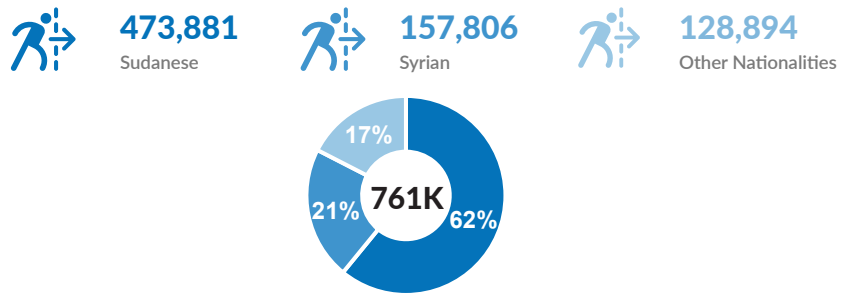
*Individuals who may face particular vulnerabilities and barriers to access services and protection, due to factors such as age, disability, health conditions, or other vulnerabilities. For more information please click on the link [here](#)

Population growth

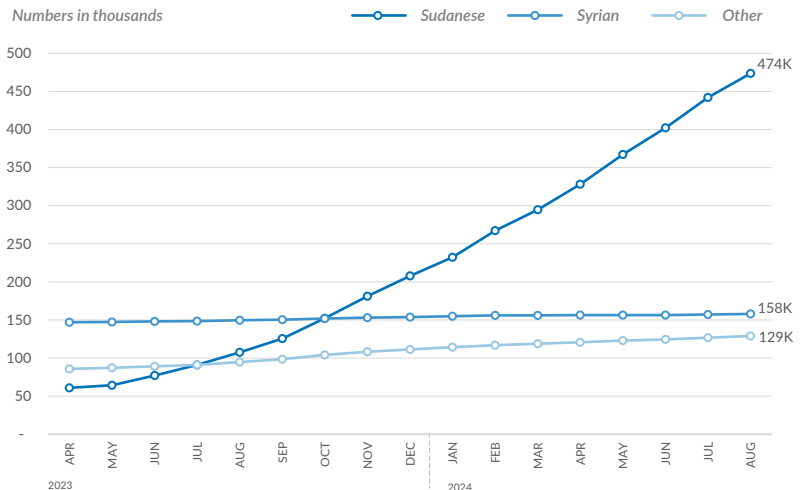
Percentage growth in Sudanese refugee numbers versus all nationalities between 31 March 2023 (pre Sudan crisis) and 31 August 2024.



Population by nationality



Trend of population by nationality



UNHCR is grateful for the contributions from its donors

