

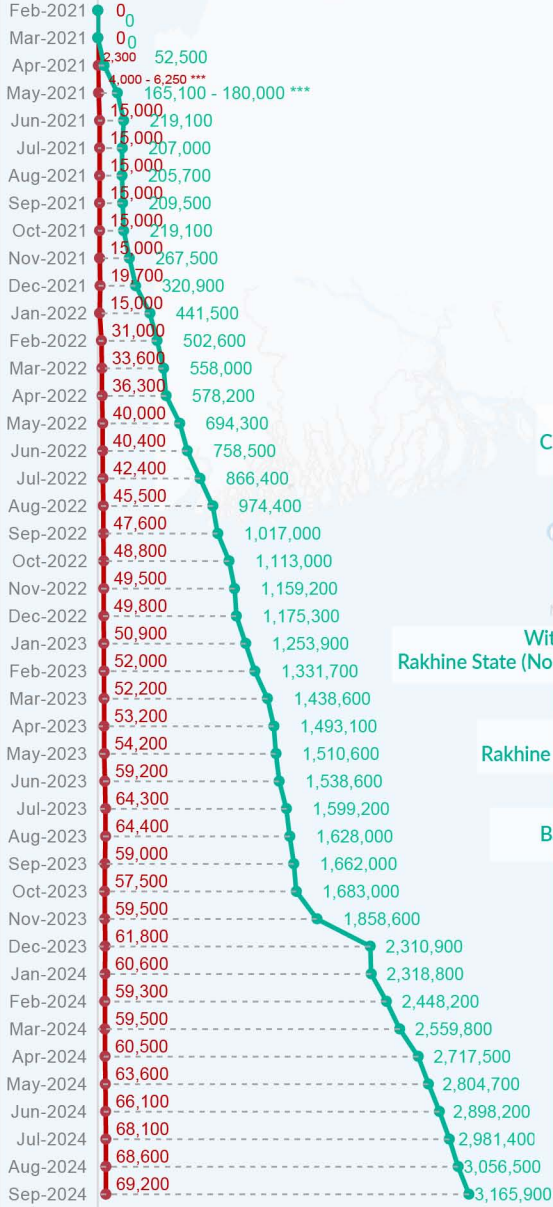
Key figures

Estimated # of IDPs → 3,165,900

Estimated # of displaced to neighbouring countries → 69,200

Source: UN in Myanmar

Estimated displacement figures by Month



— estimated # of IDP
— estimated # of displaced to neighbouring countries

*141,600 persons are displaced by armed conflict in neighbouring Kayah State while 4,600 persons are displaced by inter-EAO conflict between SSPP and RCSS.

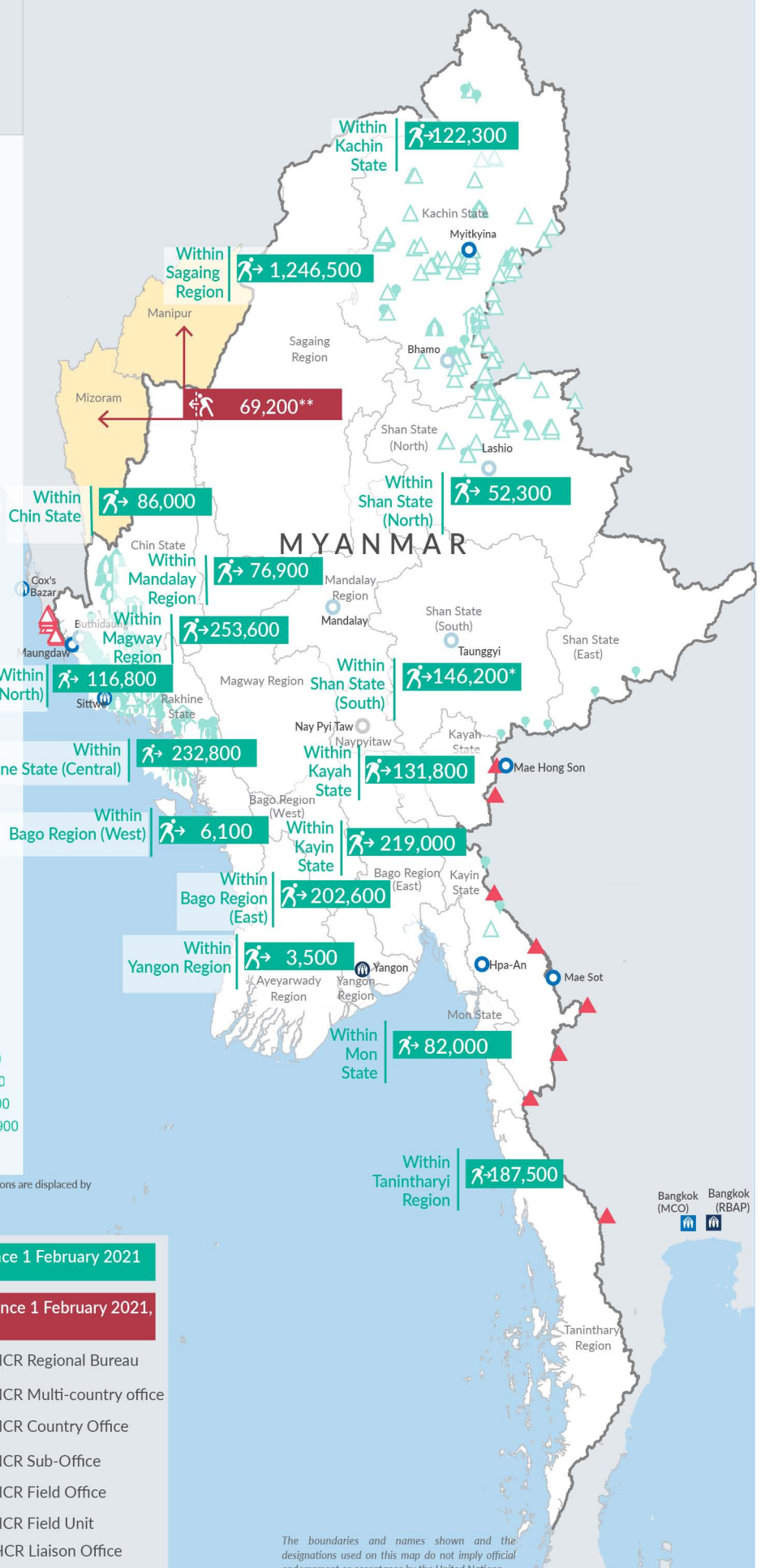
**UN Estimates

***Range of figures was used while data collection was in progress.

Estimated internal displacement within Myanmar since 1 February 2021 (rounded to the nearest hundred)

Estimated displacement to neighbouring countries since 1 February 2021, who remain displaced (rounded to the nearest hundred)

- IDP unplanned settlement (pre-1 Feb 2021)
- IDP Center (pre-1 Feb 2021)
- IDP spontaneous location (pre-1 Feb 2021)
- IDP planned settlement (pre-1 Feb 2021)
- Temporary shelter for displaced people from Myanmar
- Refugee, planned settlement
- States/Provinces with new arrivals
- International boundaries
- UNHCR Regional Bureau
- UNHCR Multi-country office
- UNHCR Country Office
- UNHCR Sub-Office
- UNHCR Field Office
- UNHCR Field Unit
- UNHCR Liaison Office



The boundaries and names shown and the designations used on this map do not imply official endorsement or acceptance by the United Nations

Key figures

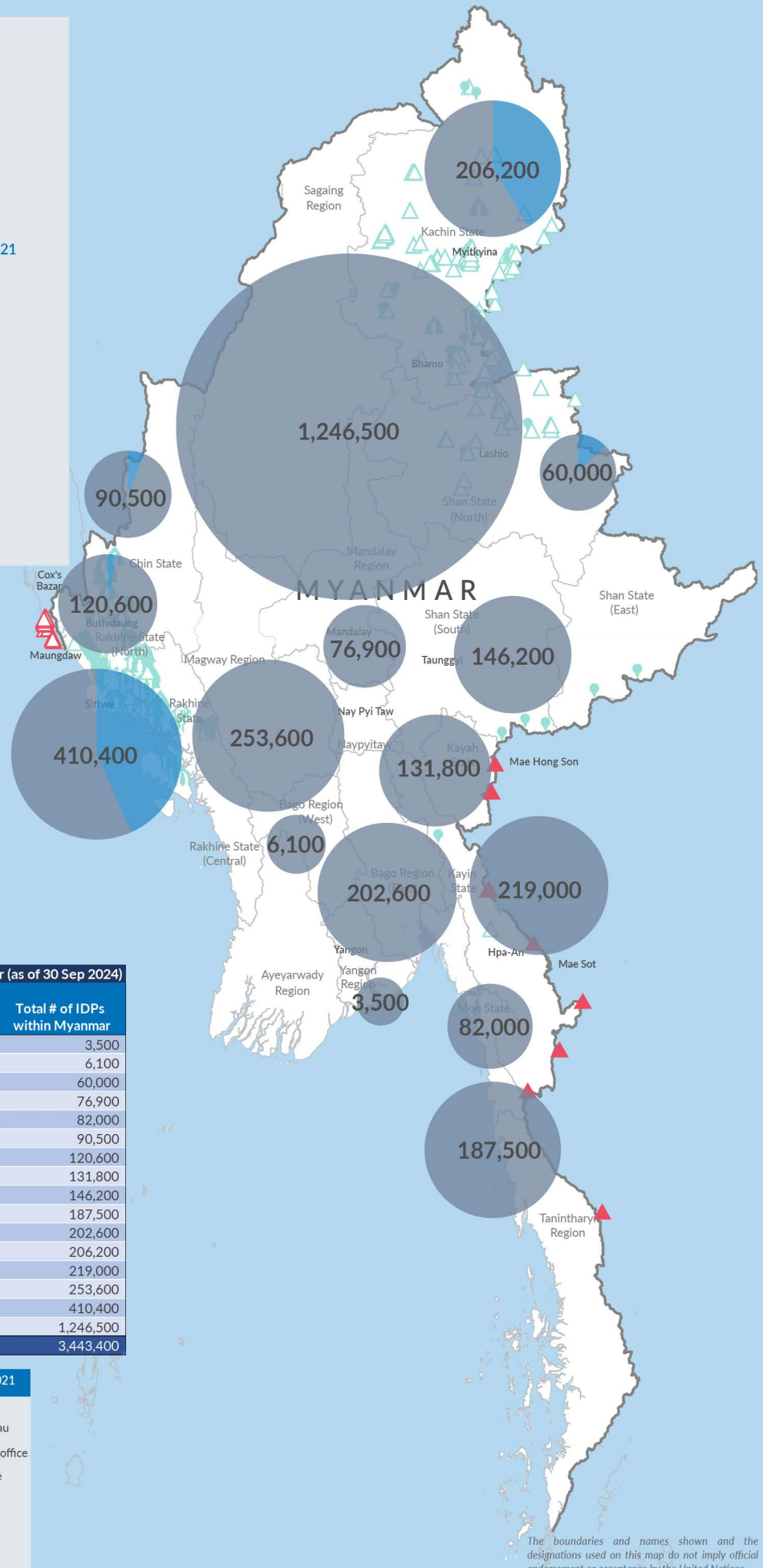

3,443,400

Estimated total IDPs within Myanmar


277,500
 Estimated # of IDPs displaced prior to 1 Feb 2021
(As of 30 Jun, 2024)

3,165,900
 Estimated # of IDPs displaced post 1 Feb 2021
(As of 30 Sep, 2024)
 Prior to 1 Feb 2021
 Post 1 Feb 2021

Source : UN in Myanmar


Estimated total internally displaced person (IDPs) within Myanmar (as of 30 Sep 2024)

| State/Region | Prior to 1 Feb 2021 IDPs | Post 1 Feb 2021 IDPs | Total # of IDPs within Myanmar |
|-------------------------|--------------------------|----------------------|--------------------------------|
| Yangon Region | | 3,500 | 3,500 |
| Bago Region (West) | | 6,100 | 6,100 |
| Shan State (North) | 7,700 | 52,300 | 60,000 |
| Mandalay Region | | 76,900 | 76,900 |
| Mon State | | 82,000 | 82,000 |
| Chin State | 4,500 | 86,000 | 90,500 |
| Rakhine State (North) | 3,800 | 116,800 | 120,600 |
| Kayah State | | 131,800 | 131,800 |
| Shan State (South) | | 146,200 | 146,200 |
| Tanintharyi Region | | 187,500 | 187,500 |
| Bago Region (East) | | 202,600 | 202,600 |
| Kachin State | 83,900 | 122,300 | 206,200 |
| Kayin State | | 219,000 | 219,000 |
| Magway Region | | 253,600 | 253,600 |
| Rakhine State (Central) | 177,600 | 232,800 | 410,400 |
| Sagaing Region | | 1,246,500 | 1,246,500 |
| Grand Total | 277,500 | 3,165,900 | 3,443,400 |

Estimated internal displacement within Myanmar Pre+Post 1 February 2021 (rounded to the nearest hundred)

-  IDP unplanned settlement (pre-1 Feb 2021)
-  IDP Center (pre-1 Feb 2021)
-  IDP spontaneous location (pre-1 Feb 2021)
-  IDP planned settlement (pre-1 Feb 2021)
-  Temporary shelter for displaced people from Myanmar
-  Refugee, planned settlement
-  International boundaries
-  UNHCR Regional Bureau
-  UNHCR Multi-country office
-  UNHCR Country Office
-  UNHCR Sub-Office
-  UNHCR Field Office
-  UNHCR Field Unit
-  UNHCR Liaison Office

The boundaries and names shown on this map do not imply official endorsement or acceptance by the United Nations