



©UNHCR/Patricia Delis

UNHCR Biometric registration in Paramaribo, Suriname


7,156

Forcibly displaced and stateless people from **5,074 households** were registered in all countries under MCO PA during 2024.

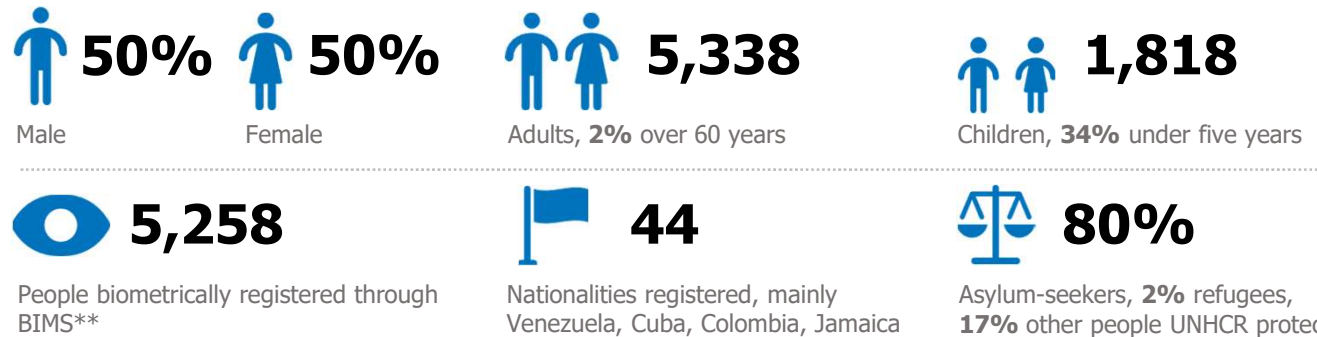
Registration Snapshot

January – October 2024

Registration – recording, verifying, and updating **biographical, biometric, and socioeconomic data** - is the first step to ensure the protection of forcibly displaced and stateless persons. It allows to **identify specific needs, provide targeted assistance, and reach durable solutions**. Registration protects against refoulement, arbitrary arrest, and detention, helps keep families together and facilitates reunification.

The Population Registration and Identity Management Ecosystem (**PRIMES**) is a set of interoperable tools developed by UNHCR to enhance registration, case management and identity management for the persons we protect.

MAIN FIGURES – PEOPLE REGISTERED

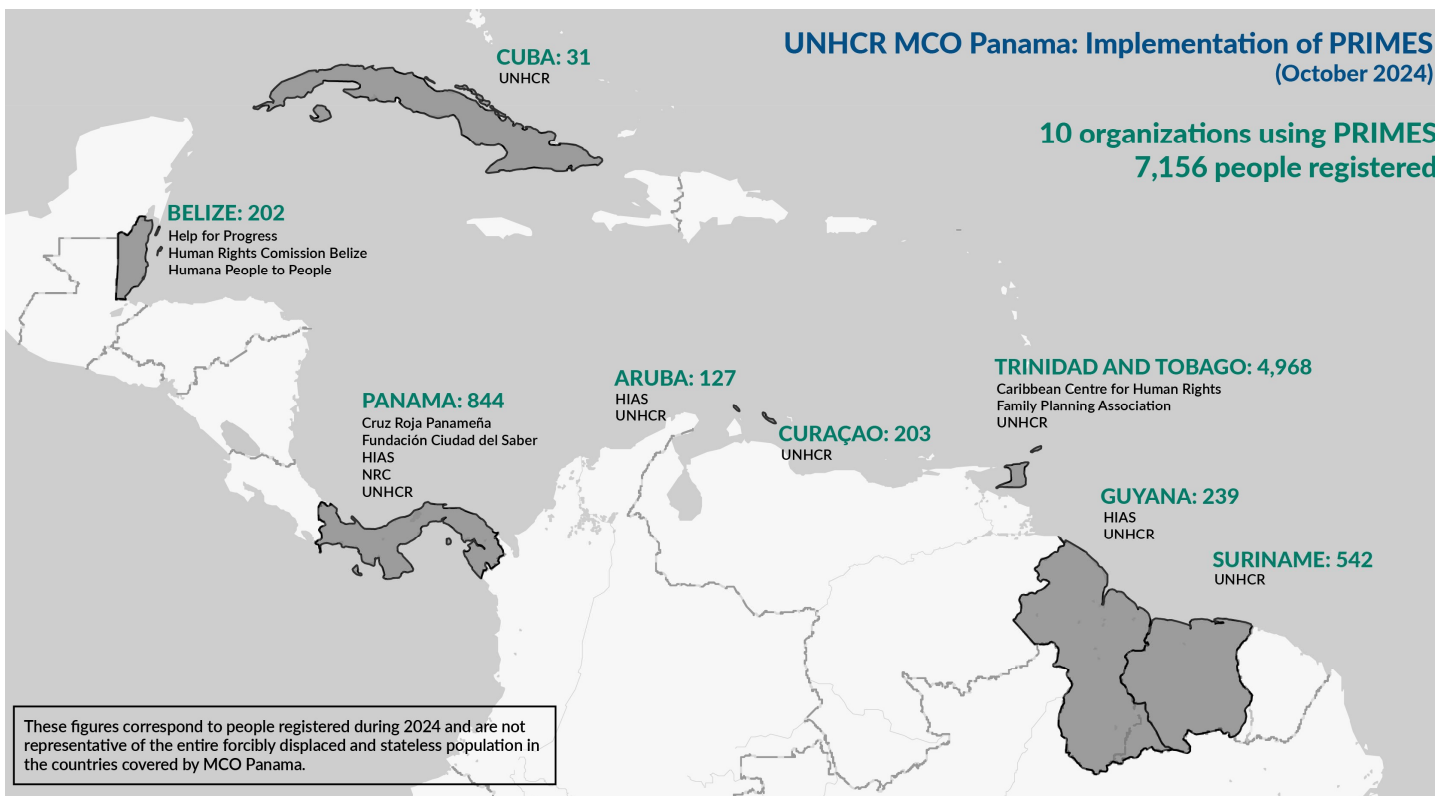


PROTECTION RESPONSE THROUGH PRIMES



*These figures are not representative of the entire forcibly displaced and stateless population in the countries covered by MCO Panama. ** Biometric Identity Management System, biometric registration includes fingerprint and iris scans as well as a facial photograph.

*** UNHCR Documents are Certificates or Cards attesting to an individual's recognition as a Mandate Refugee or as an Asylum Seeker to certify that they are persons protected by UNHCR



STRATEGIC REGISTRATION GOALS

- ✓ **Ensure high-standard registration** at the internal level for efficient case management, mandate RSD (Cuba, Guyana, Trinidad & Tobago) and RST (Aruba, Curaçao, Panama, Trinidad & Tobago).
- ✓ **Enhance partners' capacity** and integrity in case management procedures and data protection.
- ✓ **Support governments** to build or strengthen digitalized registration, case management and identity management systems to ensure fair and efficient national asylum procedures.

How does PRIMES enhance registration, case management and identity management for forcibly displaced and stateless persons?

- ✓ **Data Integrity and Accuracy;**
- ✓ **Security and Privacy** through encryption and access controls, preventing fraud and corruption;
- ✓ **Collaboration** between partners, facilitating joint efforts, avoiding duplication and reducing revictimization;
- ✓ **Digital identity for persons we protect**, enabling their socio-economic inclusion within host communities;
- ✓ **Field-proofing**, though tools working in online, offline and GSM* environments.
- ✓ **Scalability**, enabling seamless expansion to support potential large-scale and emergency displacements.

The boundaries, names, and designations shown on this map do not imply official endorsement or acceptance by the United Nations.

*GSM: Global System for Mobile Communications, the most widely used cellular-wireless telecommunications standard.