

## OVERVIEW

UNHCR Field Office Gende Wuha was established in June 2023, following the war that erupted in Sudan in April 2023 and caused people to flee, with some entering Ethiopia through the Metema Point of Entry (PoE) in Amhara Region.

Two sites (Kumer and Awlala) were initially established in response to the influx. Following to the challenging security environment, the Government of Ethiopia decided to relocate the refugees and asylum seekers to a new site, Aftit, established in July 2024.

The development of Aftit has employed 'solutions from the start' as a vital approach to ensuring that refugees have access to existing services in the locality from the onset.

RRS, UNHCR and partners have worked with government structures and bureaus playing a lead role in the deployment/expansion of critical services, such as health, education and water systems, that cater for both refugees and host communities alike.



## AT A GLANCE

<b>Current population</b>	<b>5,597</b> individuals <b>3,211</b> households
<b>Absorption capacity</b>	12,500 individuals
<b>Occupation level</b>	45%
<b>Opening date</b>	July 2024
<b>Area</b>	45.6 hectares
<b>Region   Zone   Woreda   Kebele</b>	Amhara region   West Gondar zone   Metema woreda   Aftit
<b>Woreda population</b>	174,177 individuals
<b>Kebele population</b>	5,060 individuals
<b>Longitude</b>	36.3475944
<b>Latitude</b>	12.7928056
<b>Distance from the border (in kms)</b>	30 kms
<b>Name of the nearest urban center and distance</b>	Gende wuha (woreda capital): 8.5kms; Gondar (regional capital) : 160kms
<b>Internet connectivity</b>	No connectivity
<b>Connected to national grid</b>	No
<b>Distance to national electric grid (in kms)</b>	2kms
<b>Drought affected</b>	No

## WHO DOES WHAT

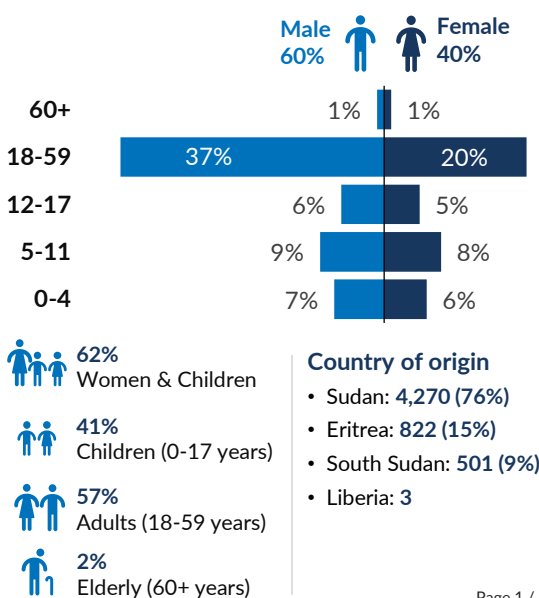
<b>Total # Organizations</b>	<b>17</b>
<b># government actors</b>	4
<b># UN agencies</b>	4
<b># International NGOs</b>	4
<b># National NGO</b>	5
<b>#Development actors</b>	0
<b>Organizations per sector</b>	
<b>Coordination</b>	RRS, UNHCR
<b>Protection</b>	RRS, UNHCR, RaDO, DICAC, IOM, ERCS
<b>GBV and SRH*</b>	DICAC, MTI
<b>Child Protection</b>	IHS, PIE
<b>Education</b>	Zonal Education Bureau, PIE, DICAC
<b>Shelter / NFI</b>	ANE, RRS
<b>Livelihood</b>	-
<b>Health</b>	Zonal Health Bureau, WVE, UNICEF, MTI
<b>WASH</b>	Zonal Water Department, PIE, CRS, IHS
<b>Food Security</b>	WFP, ANE
<b>Nutrition</b>	MTI, PIE, WVE
<b>Energy and environment</b>	-
<b>Logistics &amp; Warehousing</b>	UNHCR, RRS, AAHI

\*GBV and SRH: Gender-Based Violence and Sexual and Reproductive Health

## COMMUNITY MOBILIZATION AND PERSONS WITH SPECIFIC NEEDS

<b># of refugee committees existing in the site</b>	<b>Seven (07) committees</b>
<ul style="list-style-type: none"> <li>Refugee Central Committee (RCC): 21 members (20m, 1f)</li> <li>Women Working Group: 6f</li> <li>Gender (Male) Ambassadors Committee: 12m</li> <li>Child Protection Committee: 12 (6m, 6f)</li> <li>Child Welfare Committee: 10 (6m, 4f)</li> <li>Complaint Feedback and Mechanism Committee: 20 [Refugees 15 (10m, 5f), Host community 5(3m ,2f)]</li> <li>Parent Teachers Students Association (PTSA): 7 (6m, 1f)</li> </ul>	
<b># active participants (male and female) in leadership/management structures</b>	83
<b># active female participants in leadership/management structures</b>	23
<b>% active female participants in leadership/management structures</b>	<b>28%</b> (Standard : 50%)
<b># of unaccompanied and separated children</b>	88
<b># of persons with disability</b>	183

## DEMOGRAPHIC



## INFRASTRUCTURES ACCESSIBLE BY REFUGEES

Infrastructures	On site	Out of site	Comments
Primary Health care Centre		1	Aftit health center ( <b>solutions from the start</b> )
Water Points	5	-	All water distribution points are emergency with water tanks connected to 6 faucets.
Security Post	2	1	On site is under construction
Vocational training centre	-	1	Gende Wuha Technical and Vocational Education and Vocational Training, TVET college ( <b>solutions from the start</b> )
Child-friendly spaces	2	-	Temporary structures
Protection Desks	1	-	Temporary structure
Family latrines / communal latrines	35	-	One block of latrine has 5 stances(doors), currently 7 blocks are on the site and functional
Primary Schools	-	1	Aftit Primary school ( <b>solutions from the start</b> )
Secondary schools	-	2	Kokit and Gende wuha Secondary Schools ( <b>solutions from the start</b> )
Marketplace		1	
Nutrition centre	-	-	Not available
Community center	1	-	Refugee-led initiative

## SECTORAL INDICATOR MATRIX

This matrix is based on the most recent and accurate data available from UNHCR sector leads at the time of publication

- Acceptable
- Unacceptable
- Critical

Sector	Indicator	Standard	Current Value	Sectorial challenges
Protection	Proportion of children under 5 years of age born in Ethiopia whose births have been registered with a civil authority. [SDG* 16.9.1]	100%	0% <span style="color: red;">●</span>	- A total of 43 children under 5 years of age born in Ethiopia, none registered with a civil authority. - 812 individuals are pending biometric level 3 registration
	% of refugees and asylum seekers registered on an individual basis	100%	85% <span style="color: orange;">●</span>	
	Proportion of Persons of Concern with legally recognized identity documents or credentials	100%	34% <span style="color: red;">●</span>	
Shelter	% of households living in adequate dwellings	100%	0% <span style="color: red;">●</span>	
	% of households living in family emergency shelter	0%	100% <span style="color: red;">●</span>	
Education	% of children enrolled in preprimary education	100%	92% <span style="color: green;">●</span>	Refugee children compelled to travel <b>long distance</b> to attend secondary education at Genda Wuha host community secondary school <b>18 KMs</b> back and forth travel from Aftit refugee site to Gende Wuha secondary school.
	% of children enrolled in primary education	100%	94% <span style="color: green;">●</span>	
	% of children enrolled in secondary education	100%	78% <span style="color: green;">●</span>	
	# of children enrolled in the national education system (Primary and Secondary). [GCR 2.2.1]	100%	90% <span style="color: green;">●</span>	
Health	Proportion of births attended by skilled health personnel. [SDG 3.1.2 Tier 1]	100%	66% <span style="color: red;">●</span>	Frequent home deliveries and delays in accessing early postnatal care remain significant challenges.
	% of children aged 9 months to five years who have received measles vaccination	>= 95	90% <span style="color: orange;">●</span>	
Nutrition	% SAM* prevalence among children aged 6-59 months	<2.0%	1% <span style="color: green;">●</span>	- Lack of a TSFP* program for MAM* children and PLW* cases at the transit center posing longstanding challenge. - Lack of nutritional screening for new arrivals at Metema entry point
	% GAM* prevalence among children aged 6-59 months	<15%	9% <span style="color: green;">●</span>	
	% Stunting prevalence among children aged 6-59 months	<20%	11% <span style="color: green;">●</span>	
	% Anaemia prevalence among children aged 6-59 months	<20%		
Energy and Environment	Proportion of PoC with primary reliance on clean (cooking) fuels and technology [SDG 7.1.2 Tier 1]	100%	0% <span style="color: red;">●</span>	- Cooking stoves are still being ordered
	# of hectares of land reforested / rehabilitated in the last 24 months		0	
Livelihood	Proportion of refugees (age 15+) with an account at a bank or other financial institution or with a mobile-money-service provider	75%	NA	
	# of hectares of lands allocated to refugees for farming		0	
	% refugees (18-59 years) employed/self employed	50%	NA	
WASH	Liters of water received per person per day [emergency]	15	10.36 <span style="color: green;">●</span>	- The repeated power outages at the water sources, where water is being trucking from, affect the water supply since the boreholes are connected to the grid.
	# of persons per latrines stances	20	159 <span style="color: red;">●</span>	

\* TSFP: Targeted Supplementary Feeding Programme | MAM : Moderate Acute Malnutrition | PLW: Pregnant and Lactating Women | SDG: Sustainable Development Goals  
SAM: Severe Acute Malnutrition | GAM: Global Acute Malnutrition