

OVERVIEW

Ura site was established in June 2024, in response to the influx of refugees fleeing the conflict in Sudan that erupted in April 2023, which led to over 29,000 refugees entering Ethiopia through the Kurmuk and Gizen Point of Entries. To support this influx, in January 2024, the Regional Government officially authorized the establishment of Ura refugee site by allocating 350 hectares of land with the capacity to accommodate up to 34,000 refugees in a structured settlement. Strategically located near Assosa town, the site provides refugees with opportunities to establish economic linkages, fostering skills development and economic self-reliance. The regional authorities have allocated additional 300 hectares for agriculture use.

In alignment with the 'solutions from the start' approach, the Ura refugee site integrates essential services for both refugees and host communities from the onset. RRS, UNHCR and partners have worked with the relevant government structures and bureaus playing a lead role in the deployment / expansion of services that integrate both refugees and host community.

Ura refugee site represents a paradigm shift toward inclusive and sustainable refugee response.



AT A GLANCE

Current population	8,246 individuals 3,122 households
Absorption capacity	34,000 individuals
Occupation level	24%
Opening date	18 June 2024
Area	350 hectares
Localization Region Zone Woreda Kebele	Benishangul Gumuz Asosa Ura Akuda-Tumet
Woreda population	75,000
Kebele population	3,500
Longitude	34.6951478
Latitude	10.1517879
Distance from the border	62 km from official point of entry and 40 km from the nearest border with Sudan.
Distance to the nearest urban center	22 km from Assosa (regional capital) & 3.6 km from Ura town
Internet connectivity	3G
Connected to national grid	No
Distance to national electric grid	1km
Drought affected	No

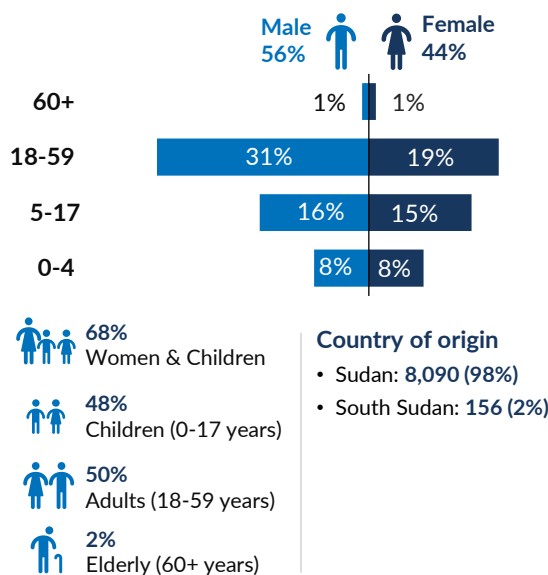
COMMUNITY MOBILIZATION AND PERSONS WITH SPECIFIC NEEDS

# of refugee committees existing in the site	10
Refugee Central Committee (RCCO) Women Association Youth Association Child right Club Community Based Child protection Committee Foster Parent Association Shurta (Community Police) Shelter Committee Food Committee Parent Teachers Students Association (PTSA)	
# active participants (male and female) in leadership/ management structures	169
# active female participants in leadership/ management structures	81
% active female participants in leadership/ management structures	48% (Standard : 50%)
# of unaccompanied and separated children	262
# of persons with disability	364

WHO DOES WHAT

Total # Organizations	18
# Government actors	4
# UN agencies	5
# International NGOs	4
# National NGO	4
#Development actors	1
Organizations by sector	
Coordination	RRS, UNHCR
Protection	RRS, UNHCR, RaDO
GBV	IRC, UNFPA, MTI
Child Protection	PIE
Education	Woreda Education Bureau, PIE
Shelter / NFI	ANE
Livelihood	-
Health	MTI, PIE Woreda Health Bureau
WASH	IRC, PIE
Food Security	WFP , ANE
Nutrition	GOAL, PIE
Energy & environment	NRDEP
Logistics	IOM
Development actors	World Bank (DRDIP)
Multi-Purpose Cash	NRC, UNICEF, BoWSA, PIE

DEMOGRAPHIC










INFRASTRUCTURES ACCESSIBLE BY REFUGEES

Infrastructures	On site	Out of site	Comments
Primary Health care Centre	2	1	1 Health post (Akuda Kebele health post), 2 health center (Akuda Kebele Health center under construction, Ura Health center)
Water Points	13	8	8 water points are planned under IRISH Aid funding for hosting community
Security Post	-	1	
Vocational training centre	-	-	
Child-friendly spaces	1	-	
Protection Desks	1	-	Temporary structure
Family latrines / communal latrines	156	9	
Primary Schools			
Secondary schools	-	-	No secondary school in Ura woreda, the regional education authorities are using a double shift approach at Ura Inclusive School to provide both primary and secondary schooling to host community children
Food distribution center	1		Temporary structure
Nutrition centre	1	1	
Community center	1	-	Temporary structure

SECTORAL INDICATOR MATRIX

This matrix is based on the most recent and accurate data available from UNHCR sector leads at the time of publication

- Acceptable
- Unacceptable
- Critical

Sector	Indicator	Standard	Current Value	Sectorial challenges
 Protection	Proportion of children under 5 years of age born in Ethiopia whose births have been registered with a civil authority. [SDG* 16.9.1]	100%	N/A	Individual registration with biometric (Level 1) to start soon
	% of refugees and asylum seekers registered on an individual basis	100%	0 ●	
	Proportion of Persons of Concern with legally recognized identity documents or credentials	100%	N/A	
 Shelter	% of households living in adequate dwellings	100%	0% ●	The majority of households remain in plastic-sheet-covered shelters, which are prone to rapid deterioration when exposed to harsh environmental conditions.
	% of households living in family emergency shelter	0%	100% ●	
 Education	% of children enrolled in preprimary education	100%	N/A	Current values not available, population for specific age groups (4-6; 7-14...) not available, pending individual biometric registration (L3).
	% of children enrolled in primary education	100%	N/A	
	% of children enrolled in secondary education	100%	N/A	
	# of children enrolled in the national education system (Primary and Secondary). [GCR 2.2.1]	100%	N/A	
 Health	Proportion of births attended by skilled health personnel. [SDG 3.1.2 Tier 1]	100%	100% ●	Only 10 children aged 9 months to 5 years out of a total of 966 received measles vaccination
	% of children aged 9 months to five years who have received measles vaccination	>= 95	1% ●	
 Nutrition	% SAM* prevalence among children aged 6-59 months	<2.0%	2% ●	Prevalence of stunting is 2x the acceptable standard. Stunting can significantly impact a child's overall health and future potential due to long-term nutritional deprivation during critical developmental stages
	% GAM* prevalence among children aged 6-59 months	<15%	11% ●	
	% Stunting prevalence among children aged 6-59 months	<20%	46% ●	
	% Anaemia prevalence among children aged 6-59 months	<20%		
 Livelihood	Proportion of refugees (age 15+) with an account at a bank or other financial institution or with a mobile-money-service provider	75%	N/A	The regional authorities have allocated 300 hectares for agriculture use
	# of hectares of lands allocated to refugees for farming		300	
 WASH	Liters of water received per person per day [emergency]	15	13.6 ●	Requirement for working tools / equipment to carry out minor to medium operation and maintenance of pumps and generators and other pipe appurtenances for regional water bureau and woreda water development offices ...
	# of persons per latrines stances	20	14 ●	

* SDG: Sustainable Development Goals | SAM: Severe Acute Malnutrition | GAM: Global Acute Malnutrition

Update date : 10 December 2024 Source: UNHCR Design: IM unit Addis Ababa

 For more information, please contact: Marie Josee Morgan, Head of Sub Office UNHCR Asosa morgan@unhcr.org; Melike Trigg Snr Ext. Rel, Officer trigg@unhcr.org