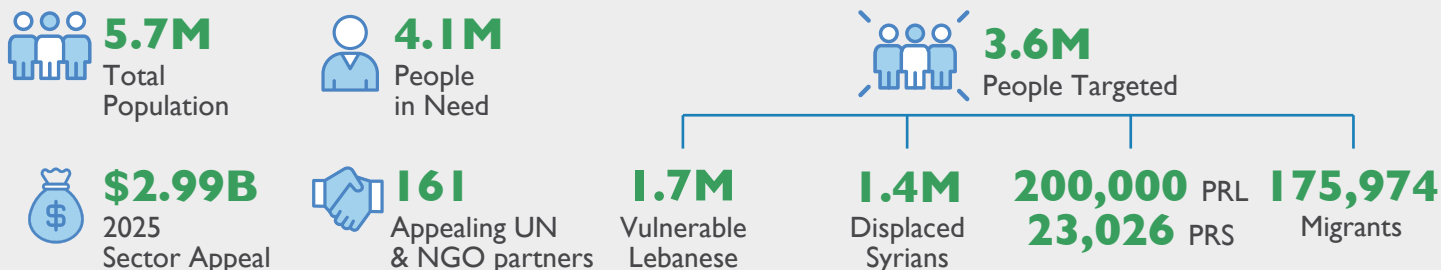


### 2025 Planning Figures



### Strategic Objectives



**Provide immediate humanitarian assistance to vulnerable populations to ensure critical needs are met.**



**Ensure protection of the vulnerable populations.**

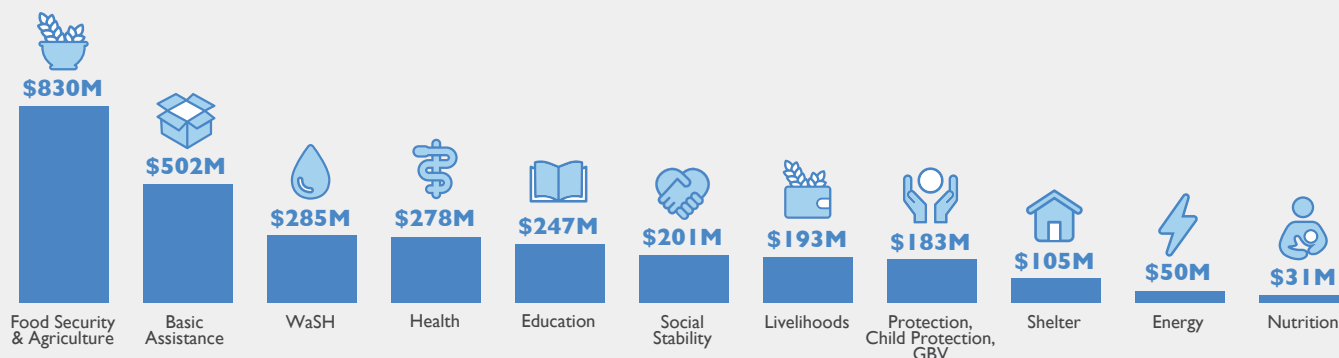


**Support service provision through national systems including national rapid response capacity.**



**Reinforce Lebanon's economic, social, and environmental stability.**

### 2025 Funding Requirement by Sector

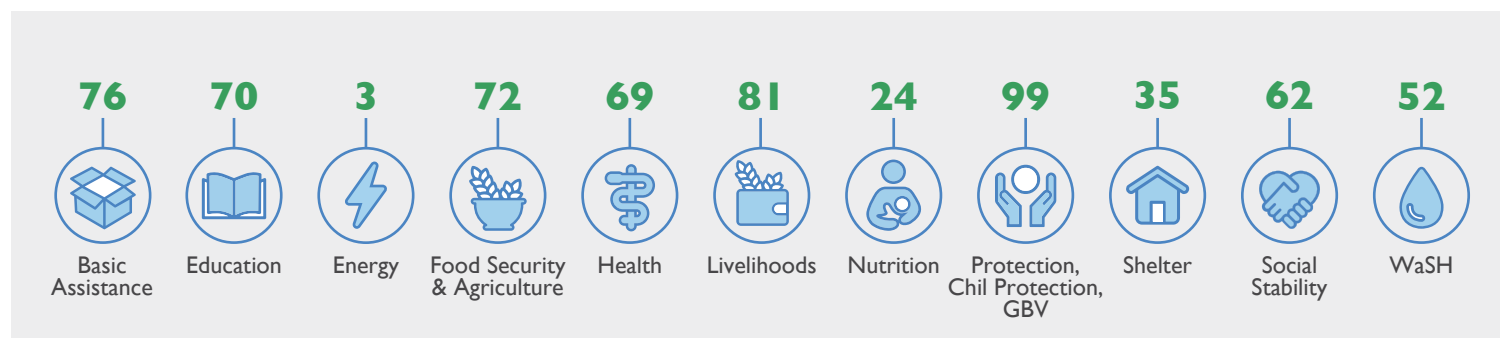


### 2025 Population Targets by Sector\*

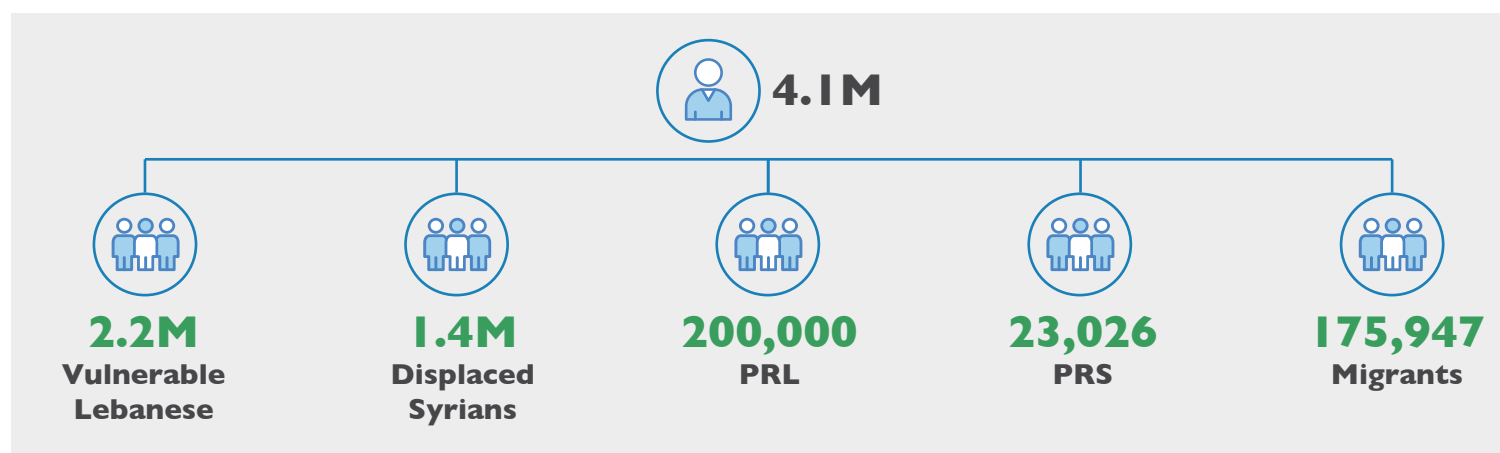
Sectors	People Targeted	Vulnerable Lebanese	Displaced Syrians	PRL	PRS	Migrants	Others
Basic Assistance	2,636,042	1,142,102	1,261,355	162,000	23,026	35,189	12,370
Education	981,531	571,653	349,800	50,508	6,177	3,393	0
Energy	1,140,000	855,000	285,000	0	0	0	0
Food Security & Agriculture	2,595,205	1,142,102	1,261,355	104,500	12,031	75,217	0
Health	2,491,343	1,098,220	1,260,000	20,000	23,026	90,097	0
Livelihoods	76,701	65,483	10,651	307	260	0	0
Nutrition	923,617	658,870	218,798	22,770	2,854	20,325	0
Protection, Child Protection, GBV	1,502,655	516,395	856,533	59,052	19,206	44,969	6,500
Shelter	613,908	195,975	382,600	24,500	3,145	7,688	0
Social Stability	3,502,685	1,603,712	1,500,000	200,000	23,026	175,947	0
WaSH	2,325,666	1,693,666	570,000	40,000	12,000	10,000	0

\*These numbers will be revised down according to 1.4M Displaced Syrians in light of ongoing population movement by the first quarter of the year.

### Appealing Partners by Sector



### People in Need



### People Targeted

