



Food Security Dashboard

Uganda Refugee Response Plan (RRP) 2024 - 2025

Quarter 4

Quarter ▼

January - December

Multiple s... ▼

Overview of the sector and narrative

The Sector Overview:

The food security sector plays a crucial role in advancing sustainable Development Goal 2.1 by improving access to nutritious food and fostering the self-reliance of refugee communities. Despite Uganda's progressive refugee policy, many asylum seekers and refugees face significant challenges due to limited livelihood opportunities. Currently, the most vulnerable beneficiaries (category 1) receive 60% of the food ration, moderately vulnerable individuals (category 2) receive 30%, and the least vulnerable (category 3) weaned off food assistance. New arrivals continue to receive 100% rations for the first three months, 60% for an additional three months before transitioning to household prioritized rations.

The Result Analysis:

The food security sector assisted over 1.39 million refugees with In-Kind (IK) food assistance and Cash Based Transfers (CBT) in the fourth quarter. Of these, 70% received CBT and 30% received IK assistance. A total of 7,267 metric tons (MT) of food and USD 12,199,477 in CBT were distributed in quarter 4. The recent Food Security and Nutrition Analysis indicated overall household food insecurity is at 61.5% of which 4.5% were severely food insecure. The proportion of refugee households who are able to meet food needs without engaging in reduced and livelihood coping strategies slightly increased from 2% in 2023 to 4% in 2024. Half of refugee households had acceptable food consumption score (FCS) while 5% had poor FCS a reduction from 11% in 2023. Limited refugee access to land and rudimentary farming practices continue to limit agricultural productivity in addition to limited livelihood opportunities causing negative impact on the food security situation. The nutrition indicators remained within Sphere standards of 93% recovery rate under the Targeted Supplementary Feeding Programme.

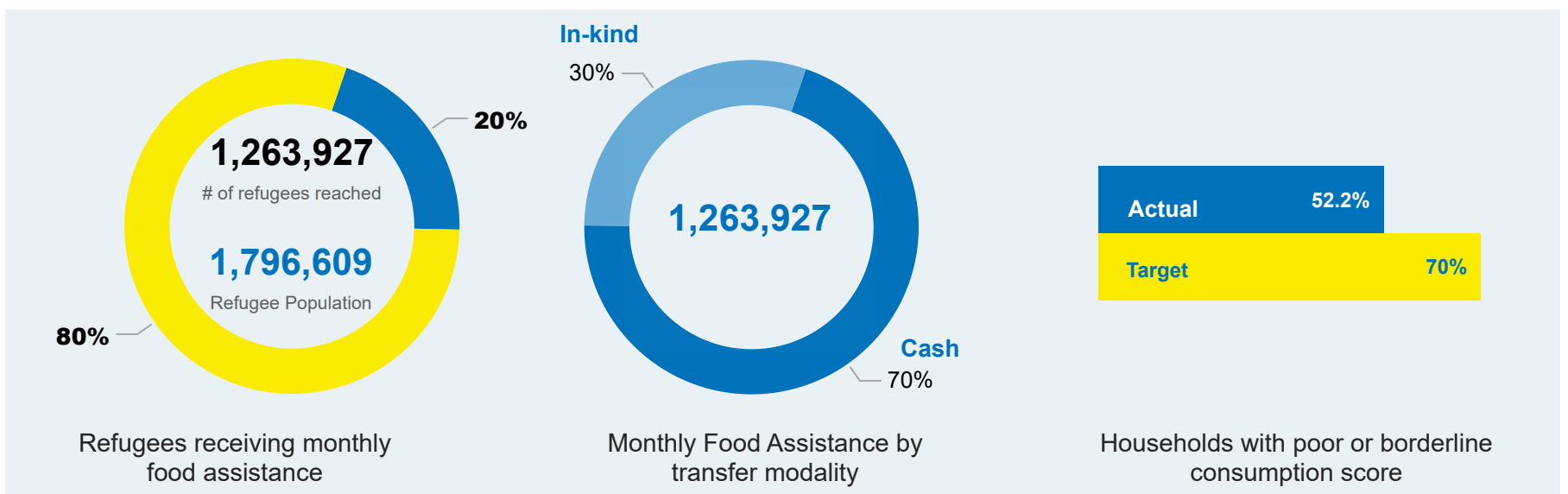
The Key Challenges/Opportunities:

The continuously changing donor funding situation has strained the humanitarian assistance landscape including WFP's ability to provide General Food assistance at full rations. The refugee influx in the last quarter of the year resulted in high populations at transit centres increasing morbidity and GAM levels among vulnerable groups. WFP continues to intensify efforts to build resilience among refugees to ensure they can meet their food consumption needs, through the self-reliance model, a market oriented. Another initiative involves scaling up the use of digital mechanisms, such as agency banking and mobile money, to maximize existing resources while prioritising those that are most in need.

The Sector Priorities:

Promote livelihood diversification, promote digital financial inclusion while ensuring mindset change to improve social norms and empower local community structures for better food security outcomes. The food security sector will continue to advocate for additional funds to increase the proportion of refugees in category one.

Key Indicators



Key Indicators

Outcome: Refugees and asylum seekers have improved access to adequate nutritious food

Indicator	Actual	Target/Standard ('24)	Actual ■	Gap ■
Refugees receiving in-kind food assistance				
- Congolese Refugees	18,938	206,176	9%	91%
- South Sudanese Refugees	357,390	386,484	92%	8%
- Other refugees	4,353	55,447	8%	92%

Refugees receiving food assistance through cash transfers

- Congolese Refugees	252,536	309,261	82%	18%
- South Sudanese Refugees	388,661	579,727	67%	33%
- Other refugees	242,049	83,171	291%	

Outcome: Refugees and asylum seekers have improved access to adequate nutritious food

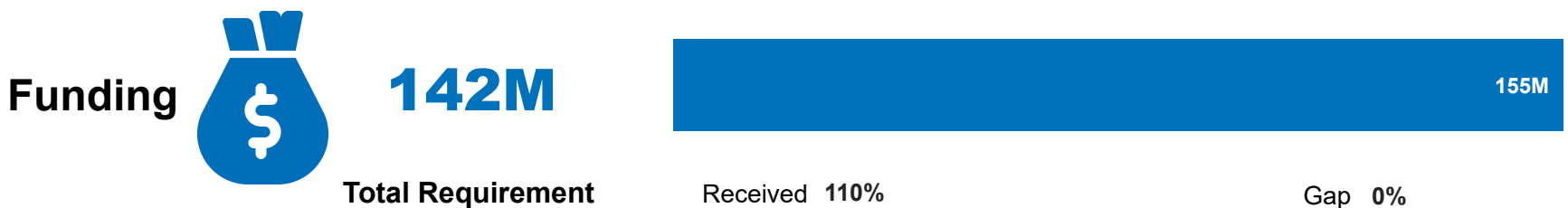
Proportion of HHs with insufficient food consumption (SUM poor and borderline food Consumption Score)

- Congolese Refugees	47	35	>100%
- South Sudanese Refugees	57	35	>100%
- Other refugees	36	35	100%

Outcome: Reduced Prevalence of Acute and Chronic Malnutrition among Refugees and Asylum Seekers in Uganda

Moderate Acute Malnutrition Treatment Recovery Rate

- Congolese Refugees	95	85	>100%
- South Sudanese Refugees	93	85	>100%
- Other refugees	95	85	>100%





Food Security Dashboard

Quarter 4

Quarter ▼

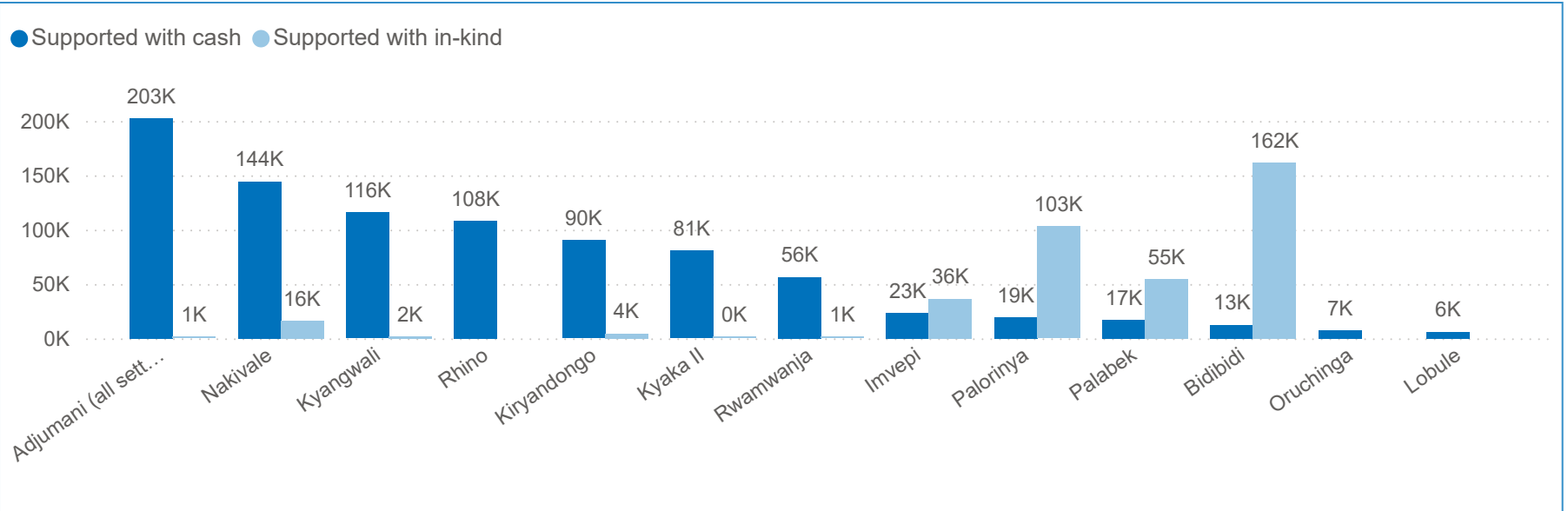
January - December

Multiple s... ▼

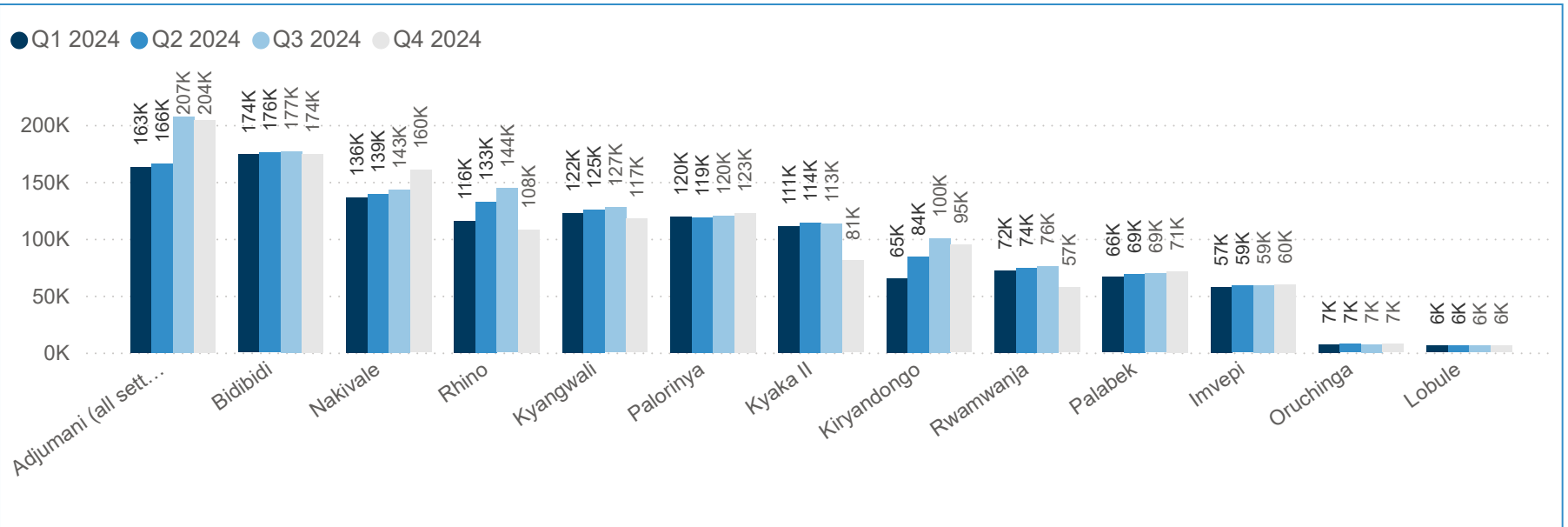
Uganda Refugee Response Plan (RRP) 2024 - 2025

Key Indicator comparison by settlement

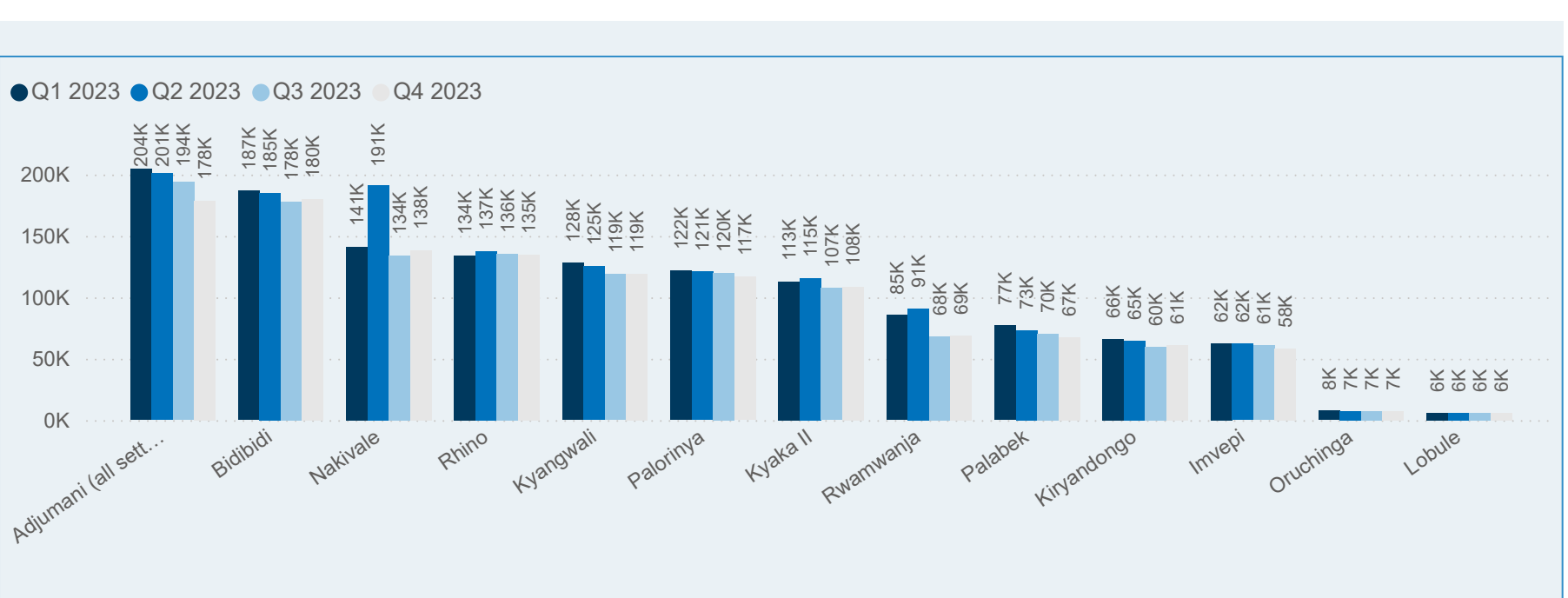
Refugees receiving food assistance | In-kind vs Cash transfers | Data as of Q4 2024



Refugees receiving food assistance | Total individuals supported | Q1, Q2, Q3 & Q4 2024 Trends



Refugees receiving food assistance | Total individuals supported | Q1, Q2, Q3 & Q4 2023 Trends



Partner Reporting

Partner	Partner	Partner	Partner
ACF	CESVI	KRC	Post Bank
AFI	Equity Bank	LWF	WVU
AFOD	FHA	MTI	
Airtel	HFU		

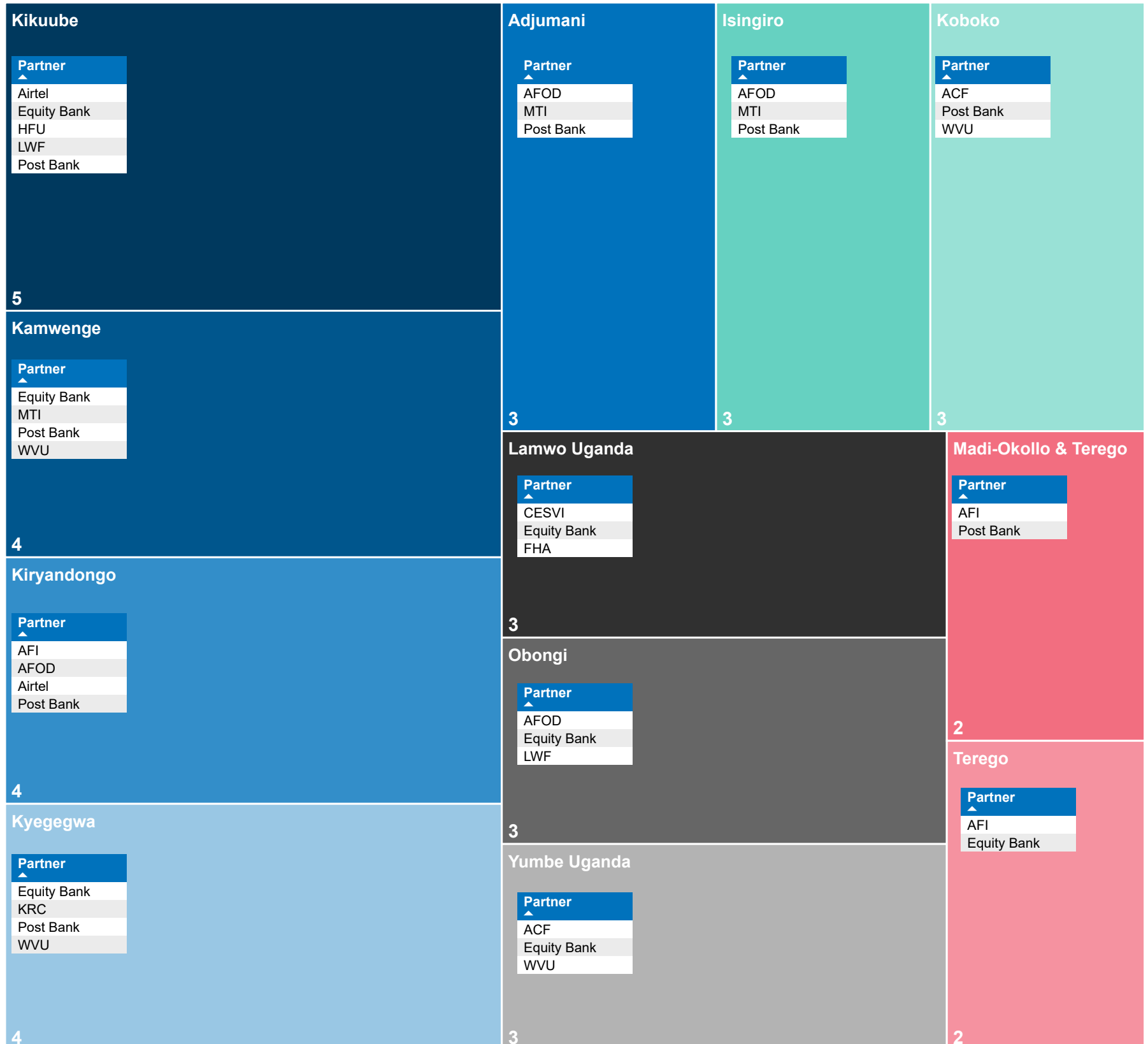


13
Partners

9
INGOs

5
NNGOs

Partner Presence by District





Food Security Dashboard

Uganda Refugee Response Plan (RRP) 2024 - 2025

Quarter 4

January - December

Quarter

Multiple s...

Operational Presence

District <input type="text" value="All"/>	Settlement <input type="text" value="All"/>	Partner Type <input type="text" value="All"/>	Partner <input type="text" value="All"/>
--	--	--	---

Partners by District and Settlement

District	Settlement	Partner Type	Partner
Adjumani	Adjumani	INGO	AFOD
Adjumani	Adjumani	INGO	MTI
Isingiro	Nakivale	INGO	Equity Bank
Isingiro	Nakivale	INGO	MTI
Isingiro	Oruchinga	INGO	Equity Bank
Isingiro	Oruchinga	INGO	MTI
Kamwenge	Rwamwanja	INGO	Equity Bank
Kamwenge	Rwamwanja	INGO	MTI
Kamwenge	Rwamwanja	INGO	WVU
Kikuube	Kyangwali	INGO	Airtel
Kikuube	Kyangwali	INGO	Equity Bank
Kikuube	Kyangwali	INGO	LWF
Kiryandongo	Kiryandongo	INGO	Airtel
Koboko	Lobule	INGO	ACF
Koboko	Lobule	INGO	WVU
Kyegegwa	Kyaka II, Uganda	INGO	Equity Bank
Kyegegwa	Kyaka II, Uganda	INGO	WVU
Lamwo Uganda	Palabek	INGO	CESVI

No of Partners by District

