

2,125,664 TOTAL FORCIBLY DISPLCED PERSONS

283,692 CENTRAL AFRICAN REFUGEES

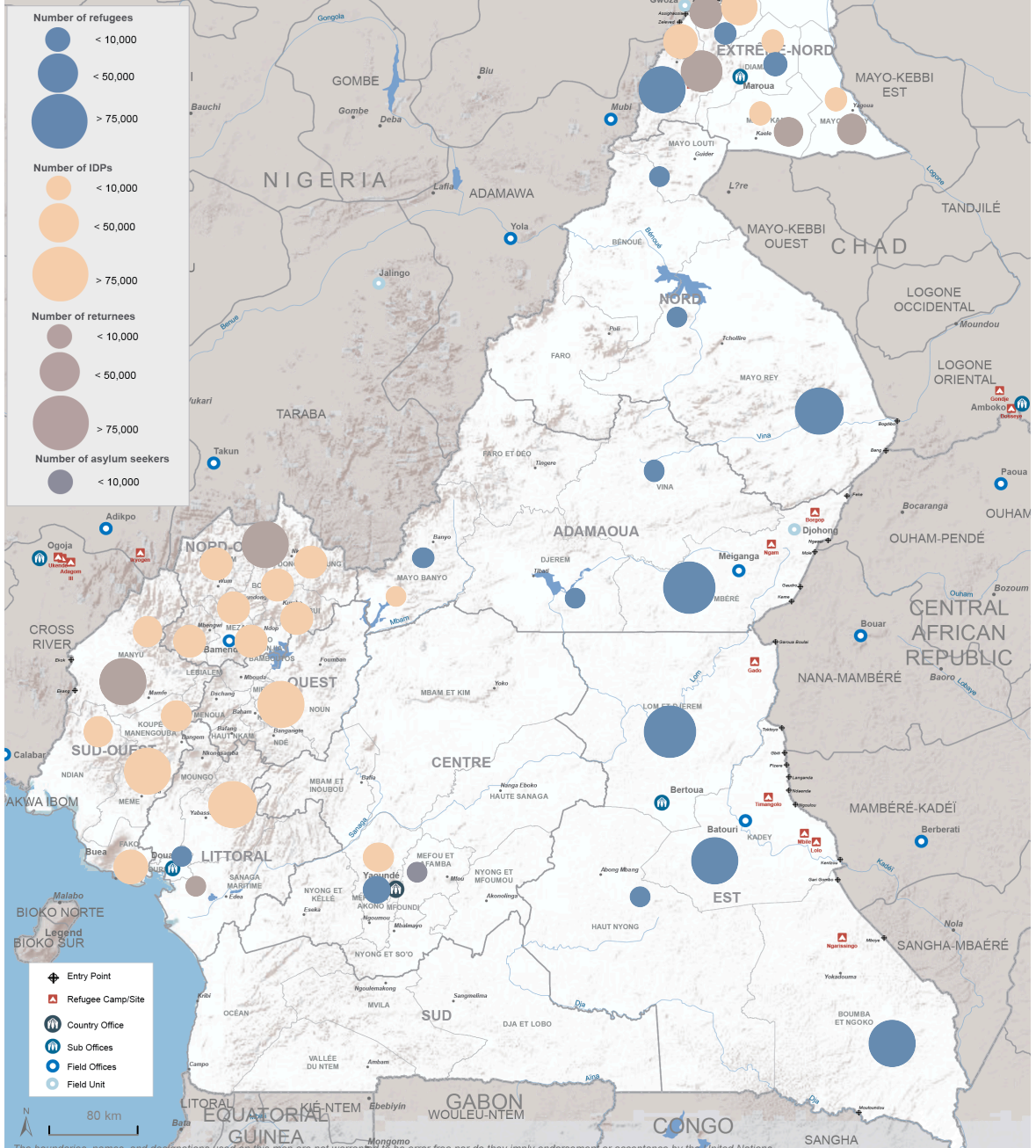
126,027 NIGERIAN PERSONS

3,375 REFUGEES OTHERS NATIONALITIES

17,251 ASYLUM SEEKERS

1,036,775 INTERNALLY DISPLCED PERSONS (IDPs)

658,544 RETURNEES IDPs



The boundaries, names, and designations used on this map are not warranted to be error free nor do they imply endorsement or acceptance by the United Nations.
 * Returnees & IDPs: Source: IOM, OCHA
 Refugees & Asylum Seekers: UNHCR
 for more information, please contact Claudric DE KALAMBAK (nguenade@unhcr.org)