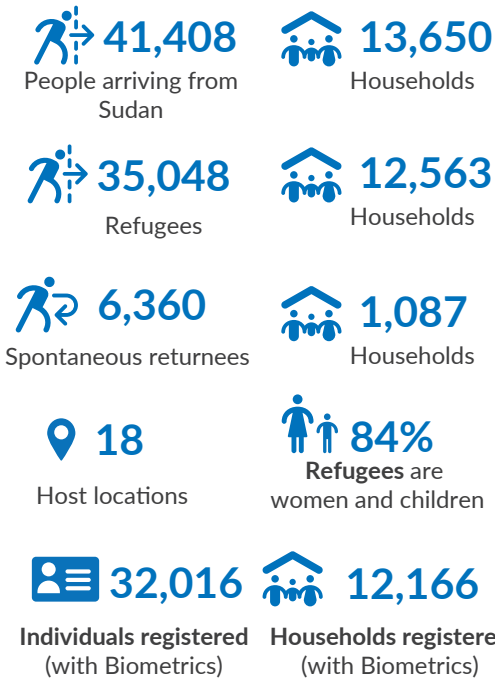


**Key figures**

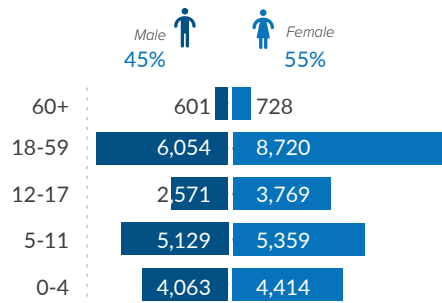


**Context**

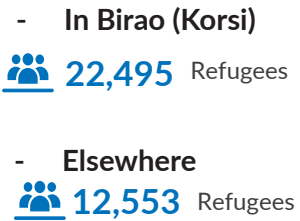
Since mid-April 2023, following the crisis that erupted in Sudan between the Sudanese Armed Forces (SAF), and the Rapid Support Forces (RSF), the Central African Republic (CAR) has been receiving thousands of Sudanese refugees through several border crossings, majority coming through Am-dafock, in the Vakaga region of CAR. UNHCR and the National Commission for Refugees (CNR) are coordinating border monitoring, reception, screening, and registration of new arrivals. Along with the CNR and the humanitarian community (including UN Agencies, International and Local NGO's) UNHCR has been providing lifesaving assistance including protection services, food, CRIs, emergency shelter, health care and education reaching 22,495 refugees in Korsi, a settlement identified by the government in Birao town, Vakaga Prefecture, 65 km from Am-dafock border. Some 12,553 Sudanese refugees are also scattered in hard-to reach locations in Vakaga, Bamingui-Bangoran, Haute-Kotto, Ouaka, Mbomou, Haut-Mbomou prefectures and in need of assistance and protection. In addition, over 6,360 Central Africans who lived as refugees in Darfur have been forced to return to CAR in adverse conditions.



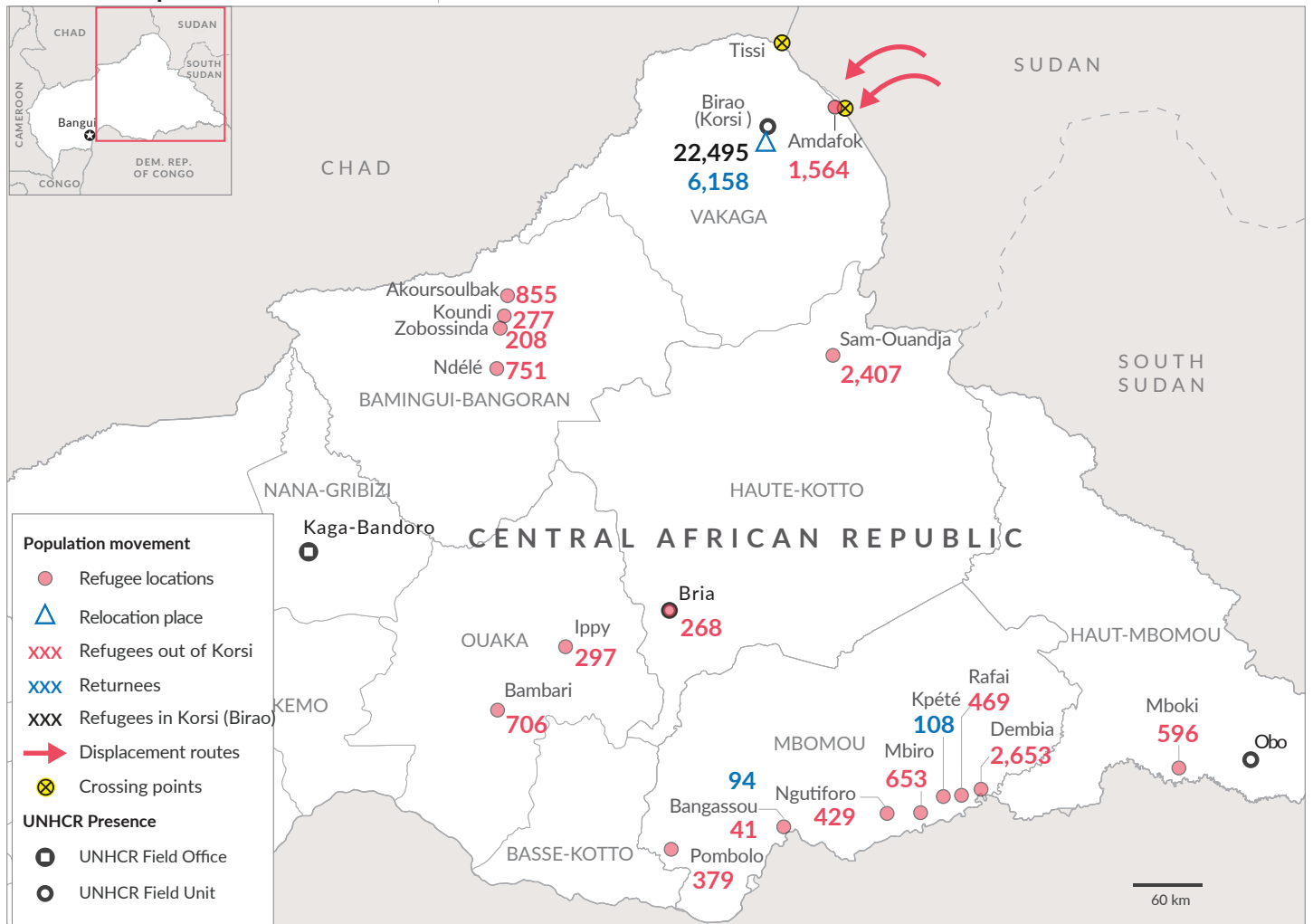
**Total number by age, sex breakdown**



**REFUGEES PRESENCE**

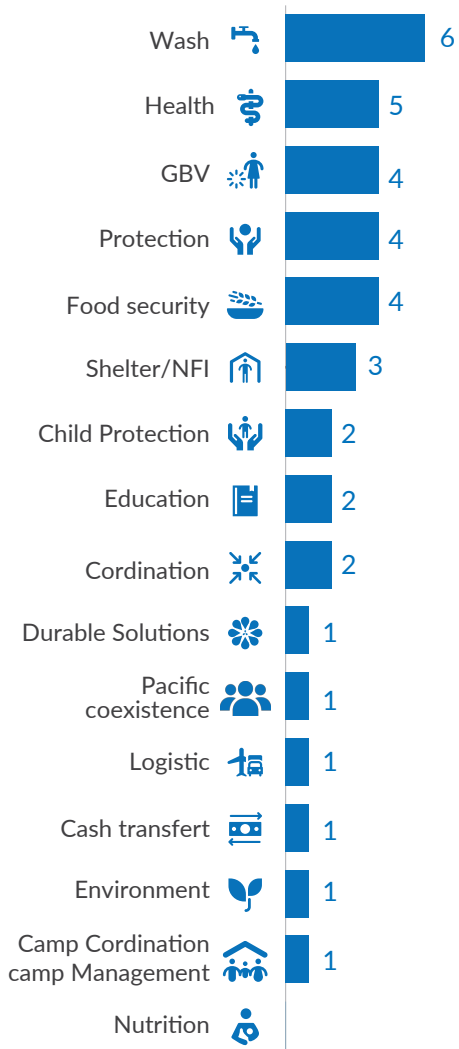


**Situation map**



The boundaries and names shown and the designations used on this map do not imply official endorsement or acceptance by the United Nations  
Sources : UNHCR, Central African Republic Gouvernement

Number of organizations by sector



Operational presence

 1

Location with actors presence

 15

Sectors intervention

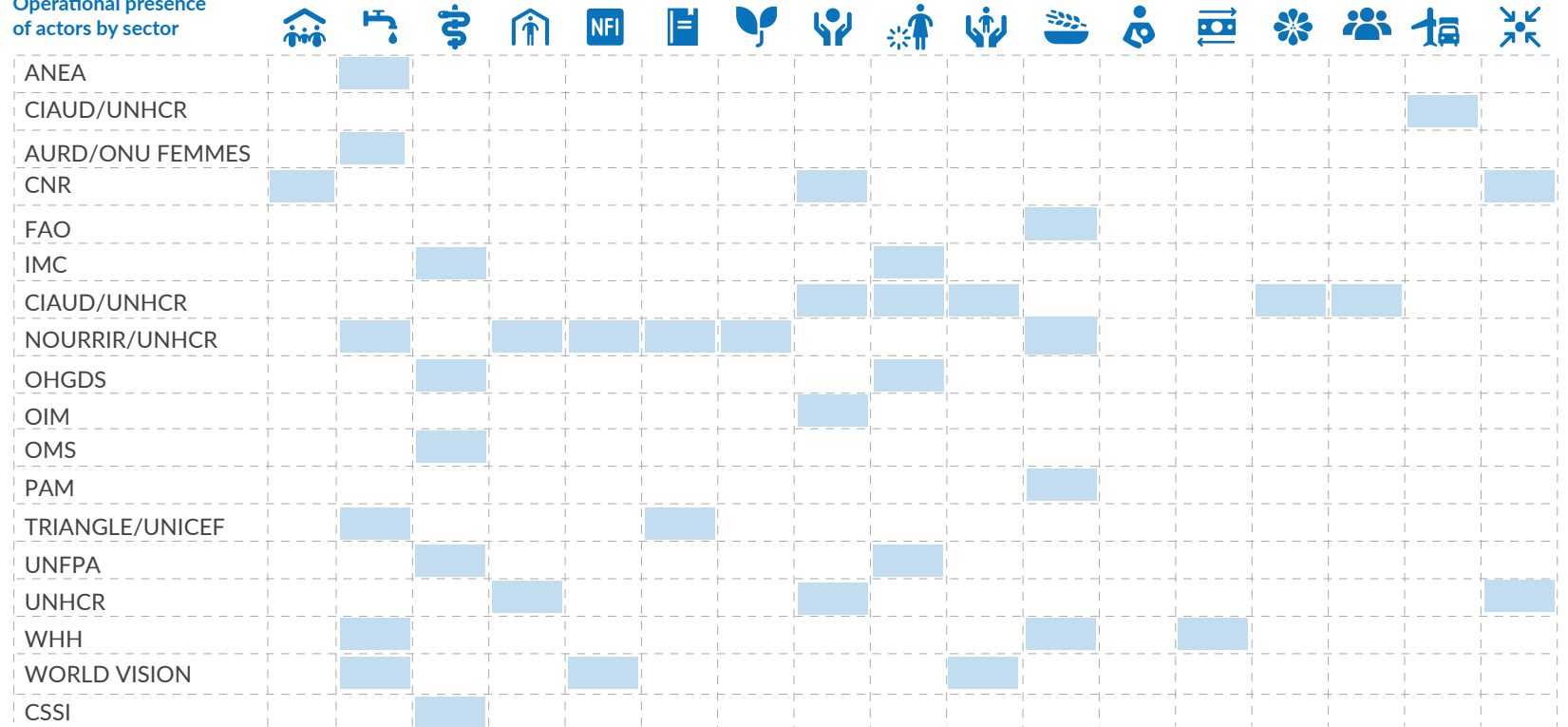
 20

Organizations represented

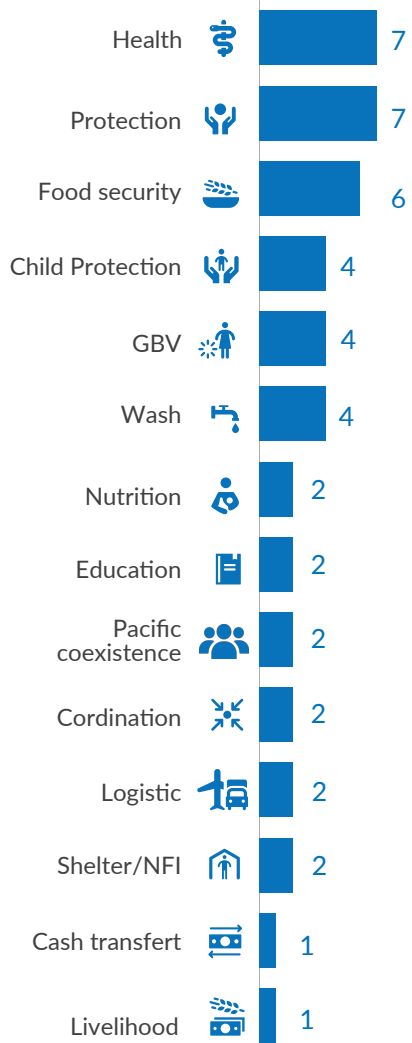


- UN Agencies: 8
- International NGO: 6
- National NGO: 3
- Gouvernment Services: 2


Operational presence of actors by sector



Number of organizations by sector

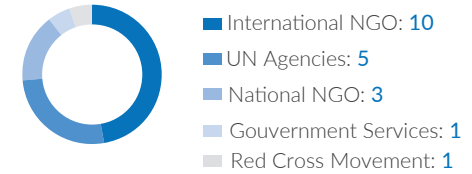


Operational presence

 **7**  
Location with actors presence

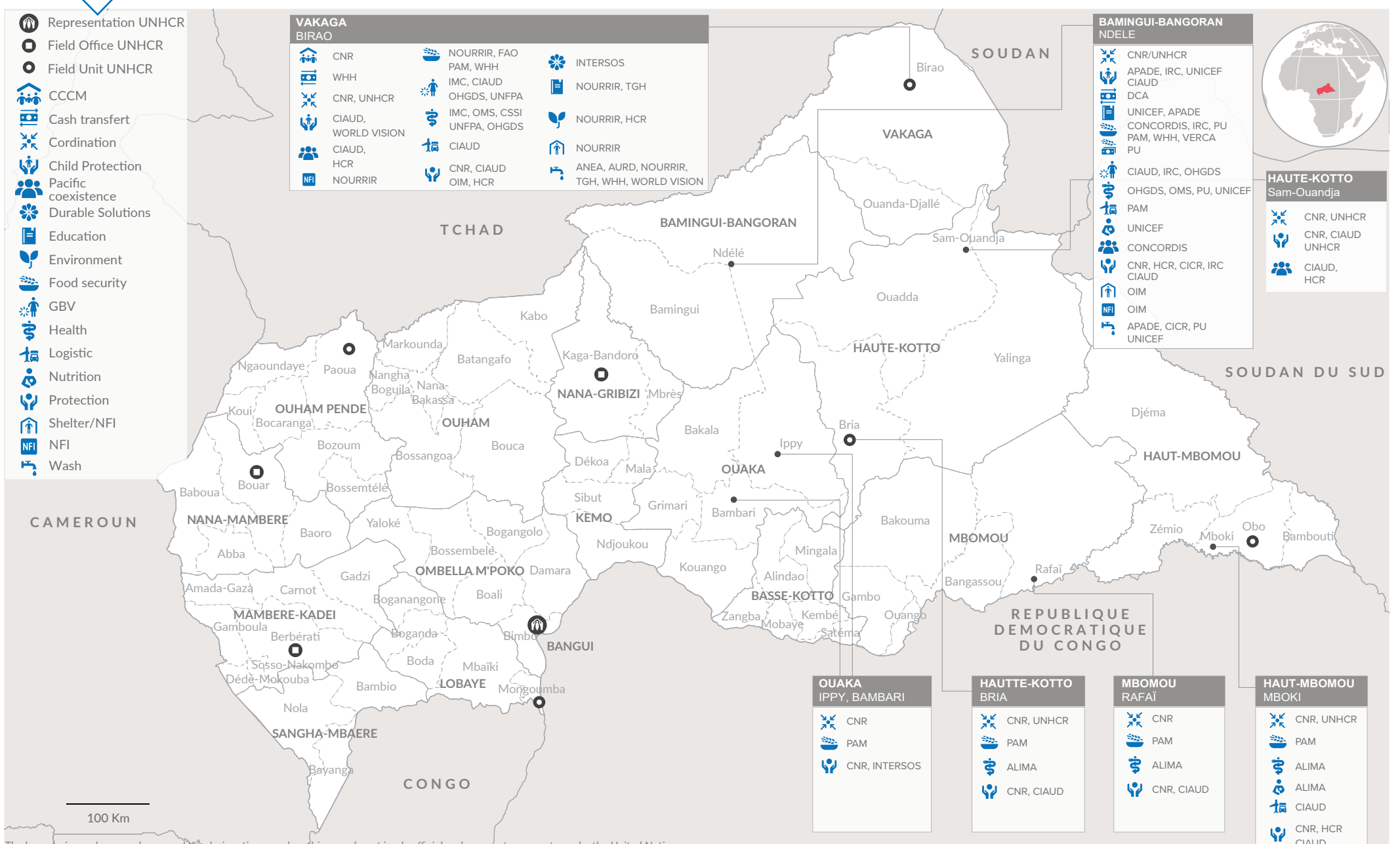
 **15**  
Intervention sectors reported

 **20**  
Organizations represented



Operational presence of actors by sector

Organization	Shelter/NFI	Wash	Health	Protection	NFI	Education	Food Security	Child Protection	GBV	Logistic	Coordination	Other
ALIMA												
APADE												
CICR												
CNR												
CONCORDIS												
CIAUD												
DCA												
CIAUD												
IRC												
OIM												
OMS												
PAM												
PU												
OHDGS												
UNHCR												
UNICEF												
INTERSOS												
VERCA												
WHH												
CSSI												
IMC												



The boundaries and names shown and the designations used on this map do not imply official endorsement or acceptance by the United Nations  
Sources : UNHCR, Central African Republic Gouvernement