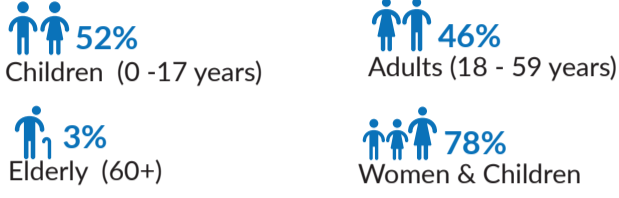


Refugees and Asylum seekers

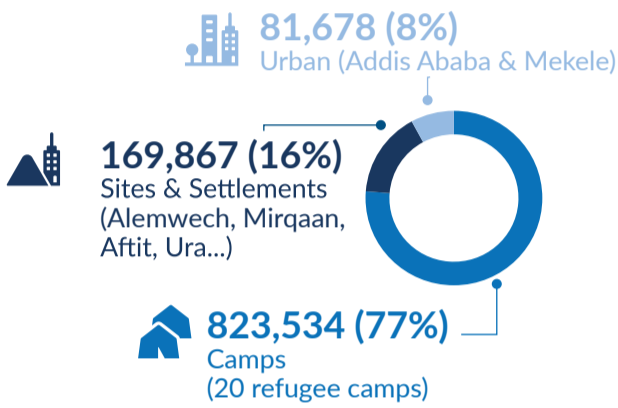
1,075,079

Total Refugees and Asylum seekers
1,011,585 refugees | 63,494 asylum-seekers
Female: 52% | Male: 48%
Main country origin: South Sudan (40%),
Somalia (34%), Eritrea (17%) and Sudan (9%)

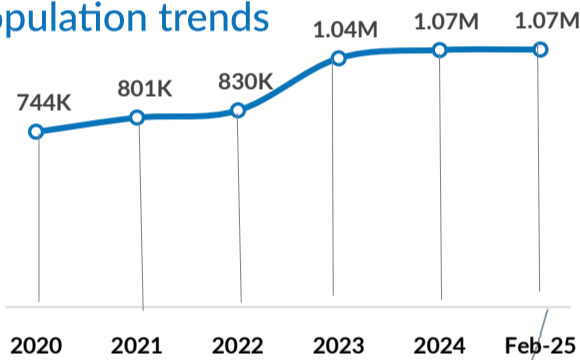
Age-gender breakdown



Population distribution



Population trends



IDPs and IDP Returnees

1,919,993

Internally Displaced Persons (IDPs)

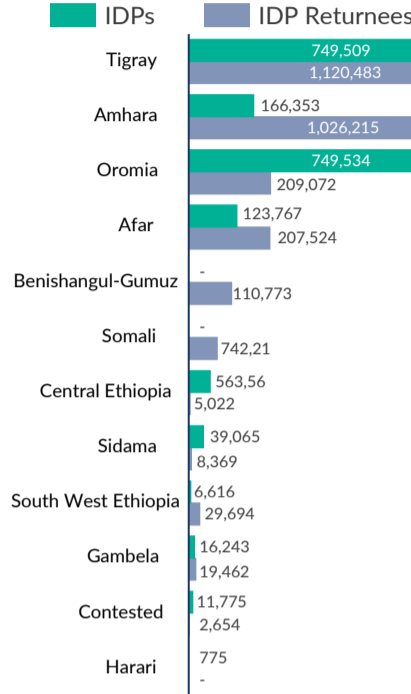
Sources: DTM Site Assessment Round 37 (August 2024)
This figure includes IDPs in different formal and informal locations
According to the latest DTM National displacement Report 20

2,813,489

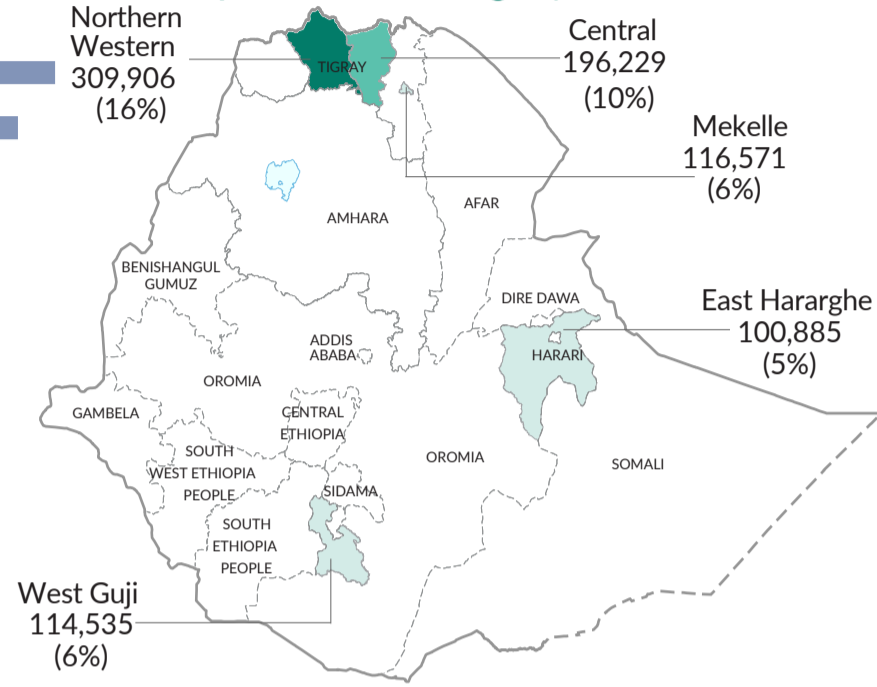
IDP Returnees

Sources: DTM National displacement Report 20

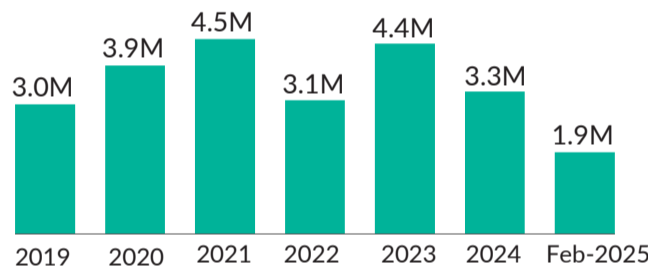
IDPs and IDP Returnees by region



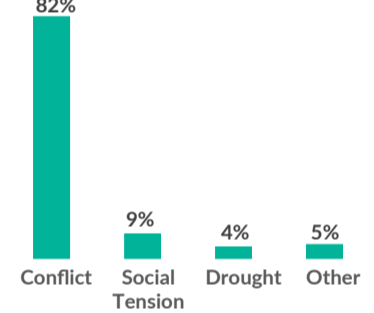
Top 5 zones of origin | IDPs



Population trends | IDPs

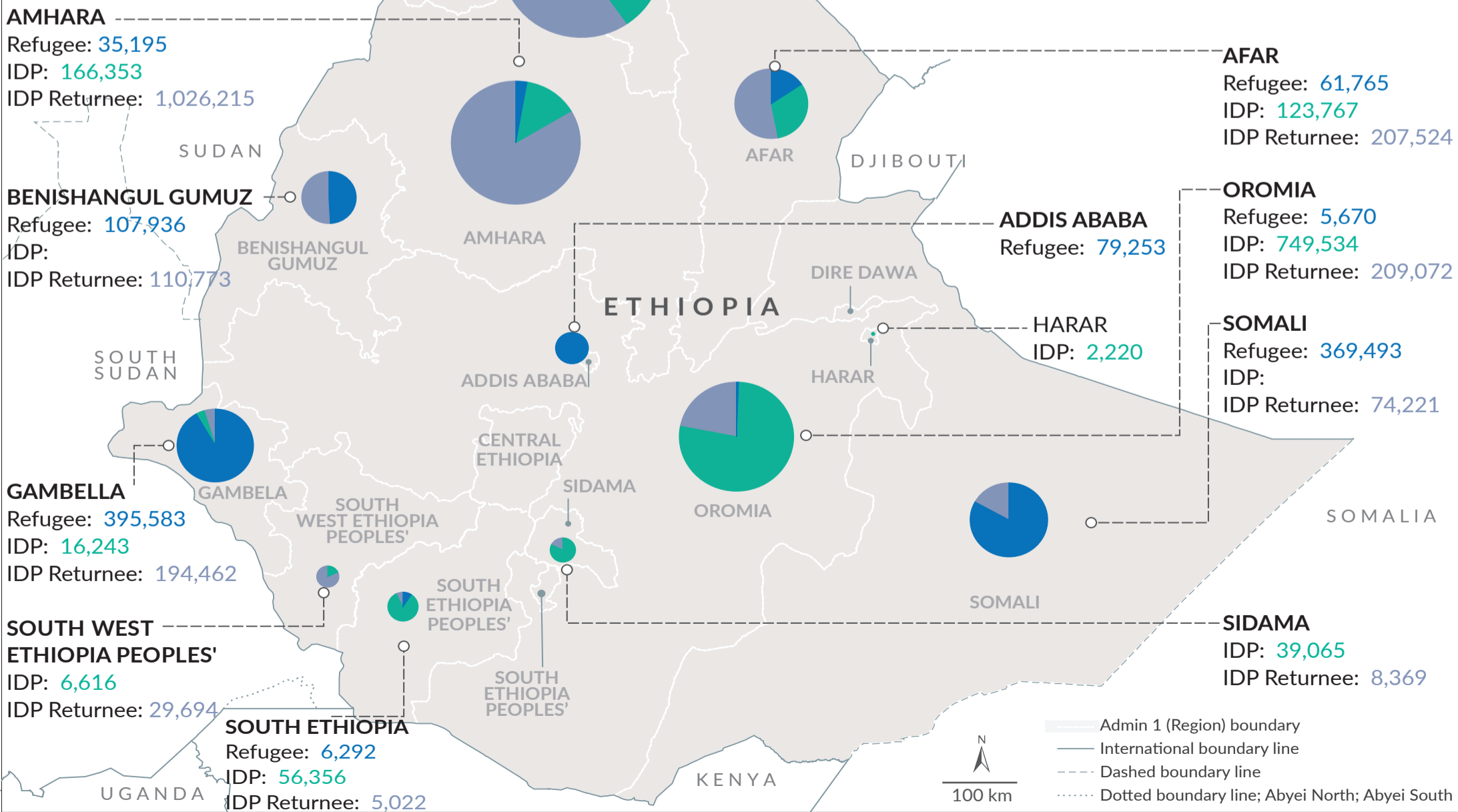


Reason of displacement | IDPs



Population by region

Refugees and Asylum seekers
IDPs
IDPs Returnees



The boundaries and names shown and the designations used on this map do not imply official endorsement or acceptance by the United Nations. * Final boundary between the Republic of Sudan and the Republic of South Sudan; and between Ethiopia and Somalia has not yet been determined.