

Overview of Refugees and Asylum-Seekers Population

(as of 28 February 2025)

1.57 MILLION approx
TOTAL REGISTERED

1.35* MILLION approx
AFGHAN (PoR) CARD HOLDERS

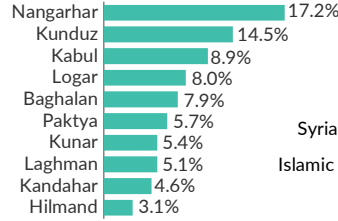
11,780
REGISTERED REFUGEES UNDER UNHCR'S MANDATE

209,945**
REGISTERED ASYLUM SEEKERS UNDER UNHCR'S MANDATE

68.6%
OUTSIDE REFUGEE VILLAGES

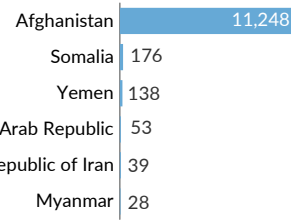
31.4%
LIVING IN REFUGEE VILLAGES

% PLACE OF ORIGIN (TOP 10)

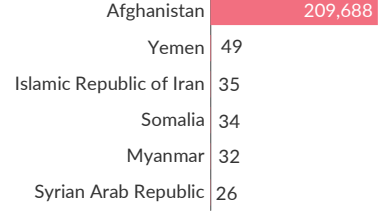


19.5% From other regions

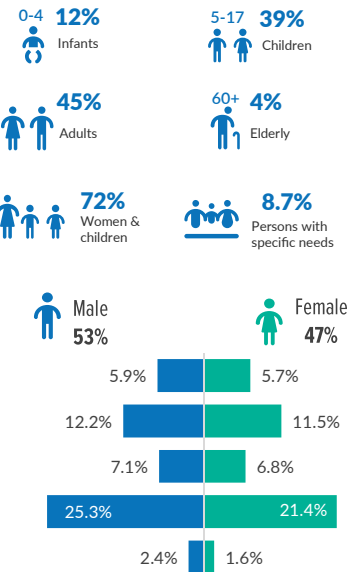
COUNTRY OF ORIGIN (TOP 6)



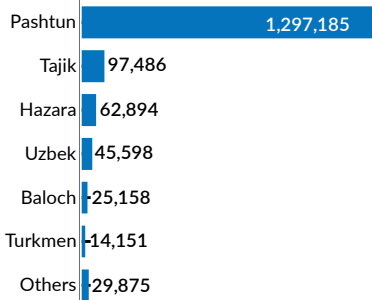
COUNTRY OF ORIGIN (TOP 6)



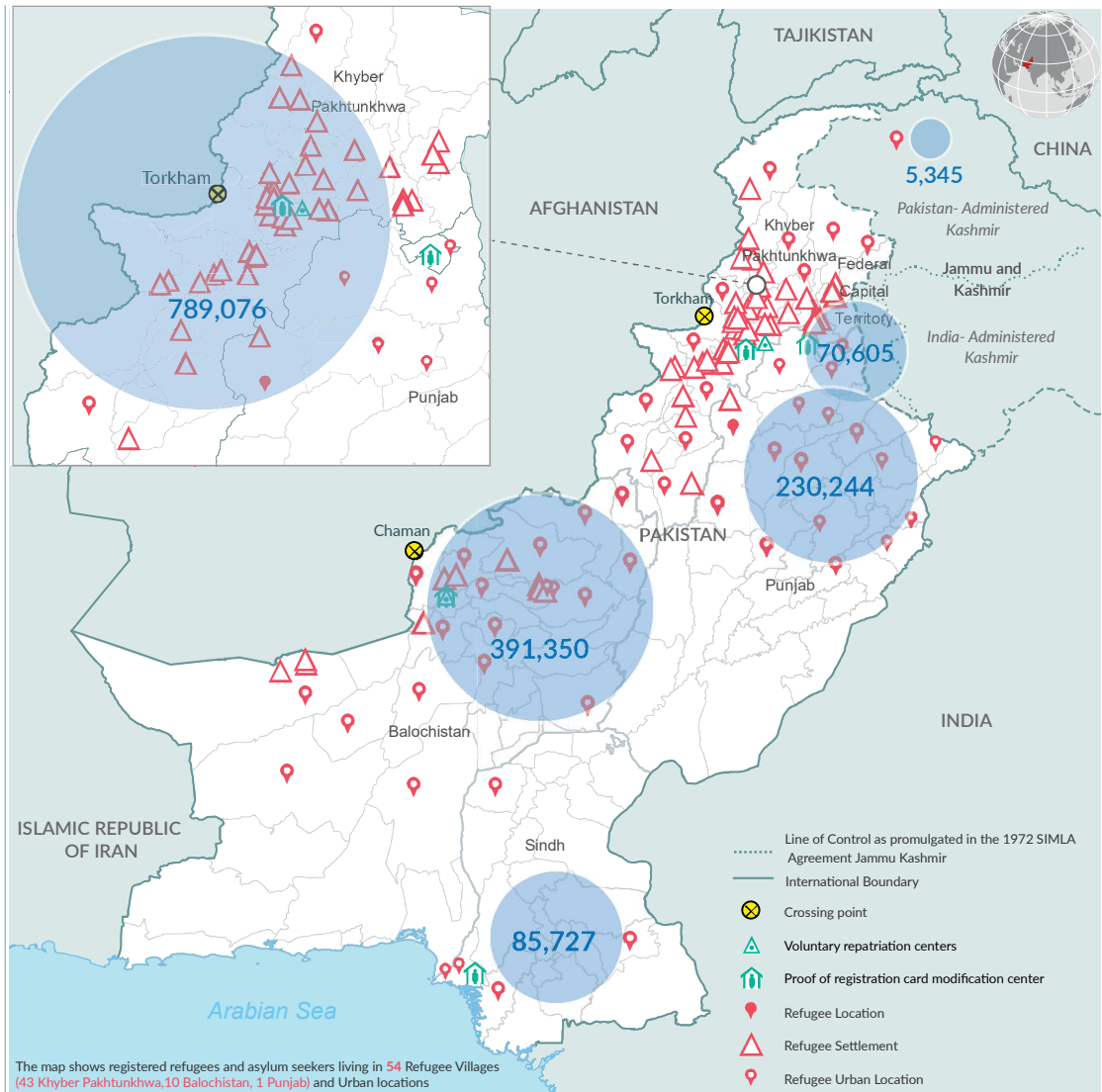
AGE AND GENDER COMPOSITION



BREAKDOWN BY ETHNICITY

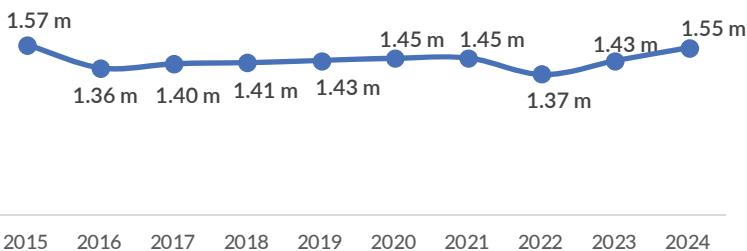


380,492 Households
89,415 (23.5%) Female-Headed

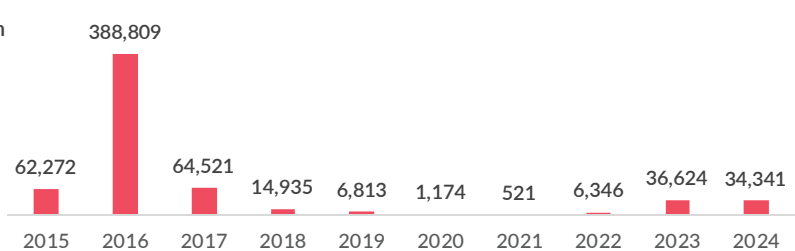


The map shows registered refugees and asylum seekers living in 54 Refugee Villages (43 Khyber Pakhtunkhwa, 10 Balochistan, 1 Punjab) and Urban locations

TRENDS POPULATION TREND SINCE 2015



POPULATION DECREASE TREND SINCE 2015***



* PoR cardholders statistics have been revised as a result of the data cleanup. The figure does not include Un-registered Members of Registered Families (UMRF) statistics
 ** Registered Asylum Seekers statistics have been revised as a result of verification exercise in 2024*** Decreases result from voluntary repatriation, resettlement and inactivation, including due to deaths.
 Source: Afghan National Registration (ANR) Database, UNHCR Profile Global Registration System (proGres) v4.
 Disclaimer: The boundaries and names shown and the designations used on the map do not imply official endorsement or acceptance by the United Nations. Dotted line represents approximately the Line of Control in Jammu and Kashmir agreed upon by India and Pakistan. The final status of Jammu and Kashmir has not yet been agreed upon by the parties. Creation date: 10 March 2025 Data Sources: Afghan National Registration (ANR) Database, UNHCR.
 More information available on UNHCR: data portal, <https://data2.unhcr.org/en/country/pak>, Feedback: Information Management Unit at pakisim@unhcr.org