

2,126,851 TOTAL FORCIBLY DISPLCED PERSONS

284,170 CENTRAL AFRICAN REFUGEES

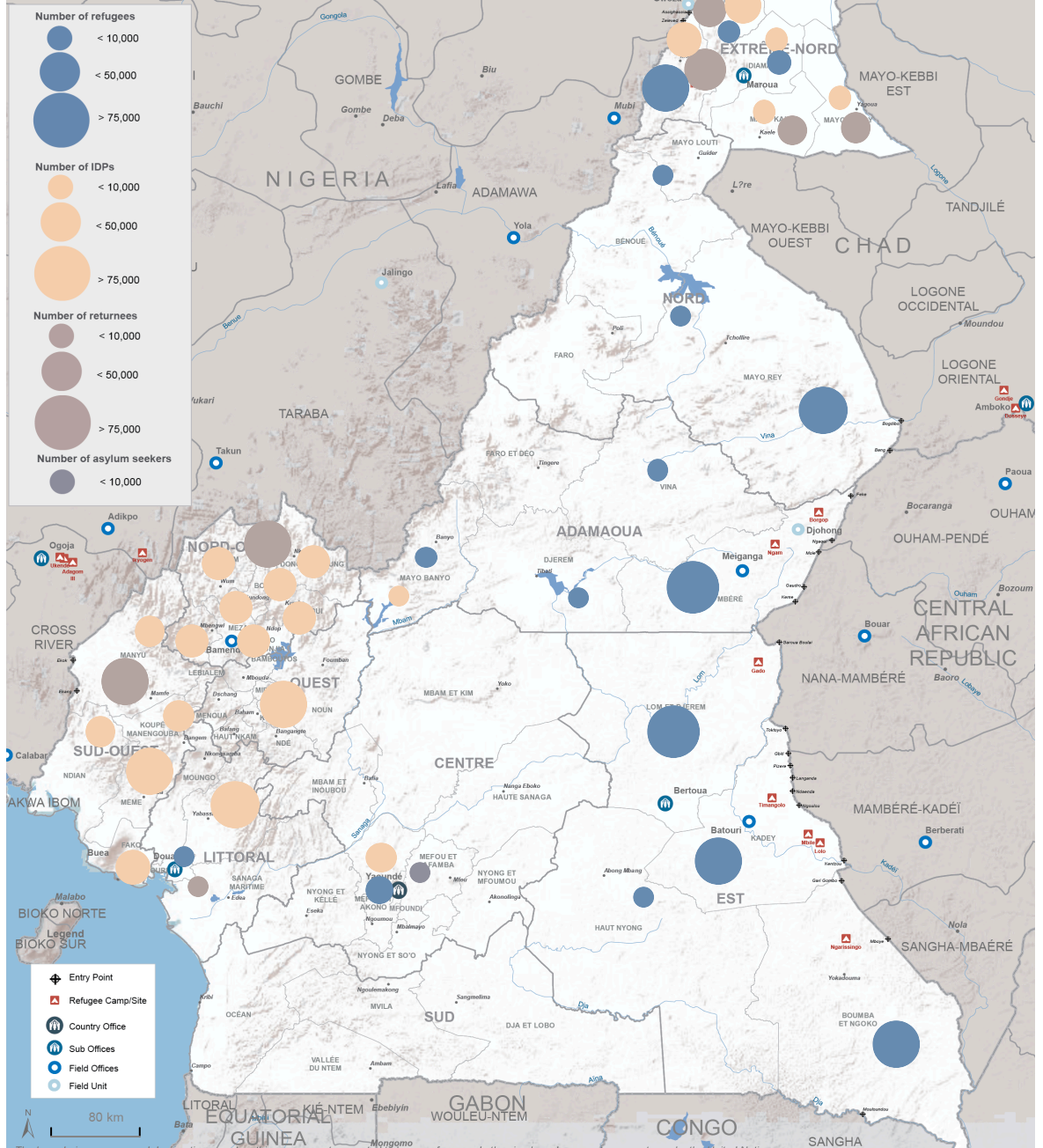
126,171 NIGERIAN PERSONS

3,423 REFUGEES OTHERS NATIONALITIES

17,768 ASYLUM SEEKERS

1,036,775 INTERNALLY DISPLCED PERSONS (IDPs)

658,544 RETURNEES IDPs



* Returnees & IDPs: Source: IOM, OCHA
 Refugees & Asylum Seekers: Source: UNHCR